

INDEX OF SHEETS

Sheet No.	Description
1	COVER SHEET
2	TYPICAL CROSS SECTION AND DETAILS
3	DETAILS & SCHEDULES

STANDARDS

701301-04	TRAFFIC CONTROL
701306-03	TRAFFIC CONTROL
701901-01	TRAFFIC CONTROL

SUMMARY OF QUANTITIES

CODE NO.	DESCRIPTION	QUANTITY	UNIT
* Z0048665	RR PROTECTIVE LIABILITY INSURANCE	1	L SUM
* 20200100	EARTH EXCAVATION	20	CU YD
* 35100100	AGGREGATE BASE CSE. TYPE A	42	TON
* 40600100	BITUMINOUS MATERIALS (PRIME COAT)	9813	GALLON
40600300	AGGREGATE (PRIME COAT)	198	TON
40600625	LEVELING BINDER (MACHINE METHOD), N50	2704	TON
40600982	HOT-MIX ASPHALT SURFACE REMOVAL - BUTT JOINT	380	SO YD
40600990	TEMPORARY RAMP	51	SO YD
* 40603310	HOT-MIX ASPHALT SURFACE CSE. MIX "C", N50	4217	TON
40800050	INCIDENTAL HOT-MIX ASPHALT SURFACING	141	TON
44000155	HOT MIX ASPHALT SURFACE REMOVAL, 1 1/2"	1784	SO YD
* 48101200	AGGREGATE SHOULDERS, TYPE B	2777	TON
67100100	MOBILIZATION	1	L SUM
* 70100460	TRAFFIC CONTROL AND PROTECTION, STD 701306	1	L SUM
* 70300100	SHORT-TERM PAVEMENT MARKING	4287	FOOT

Construction Code 0005
* Special Provisions

CONTRACT NO. 87490

J.U.L.I.E. 1-800-892-0123

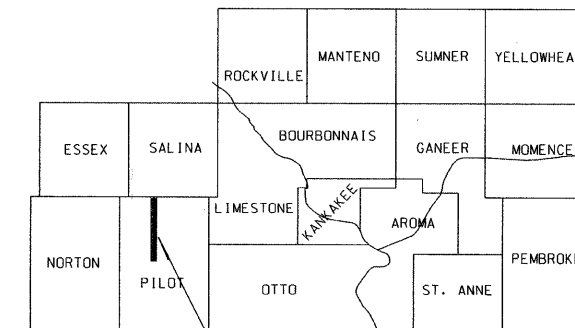
STA.0+85
CONSTRUCTION STARTS
(STA.0+00 = N.ER IL RT 115)

DEPARTMENT OF TRANSPORTATION
COUNTY OF KANKAKEE
DEPARTMENT OF HIGHWAYS
PLANS FOR PROPOSED
FEDERAL AID SECONDARY PROJECT
SECTION 09-00027-01-RS
F.A.S. 319 (C.H.12) PROJECT RS- 319 (112)
JOB NO. C-93-114-11

F.A.S.ROUTE NO.	SEC.	COUNTY	NO.SHEETS	SHEET NO.
319	*	Kankakee	3	1
PROJECT RS-319(112)			CONTRACT NO. 87490	

* 09-00027-01-RS

KANKAKEE COUNTY

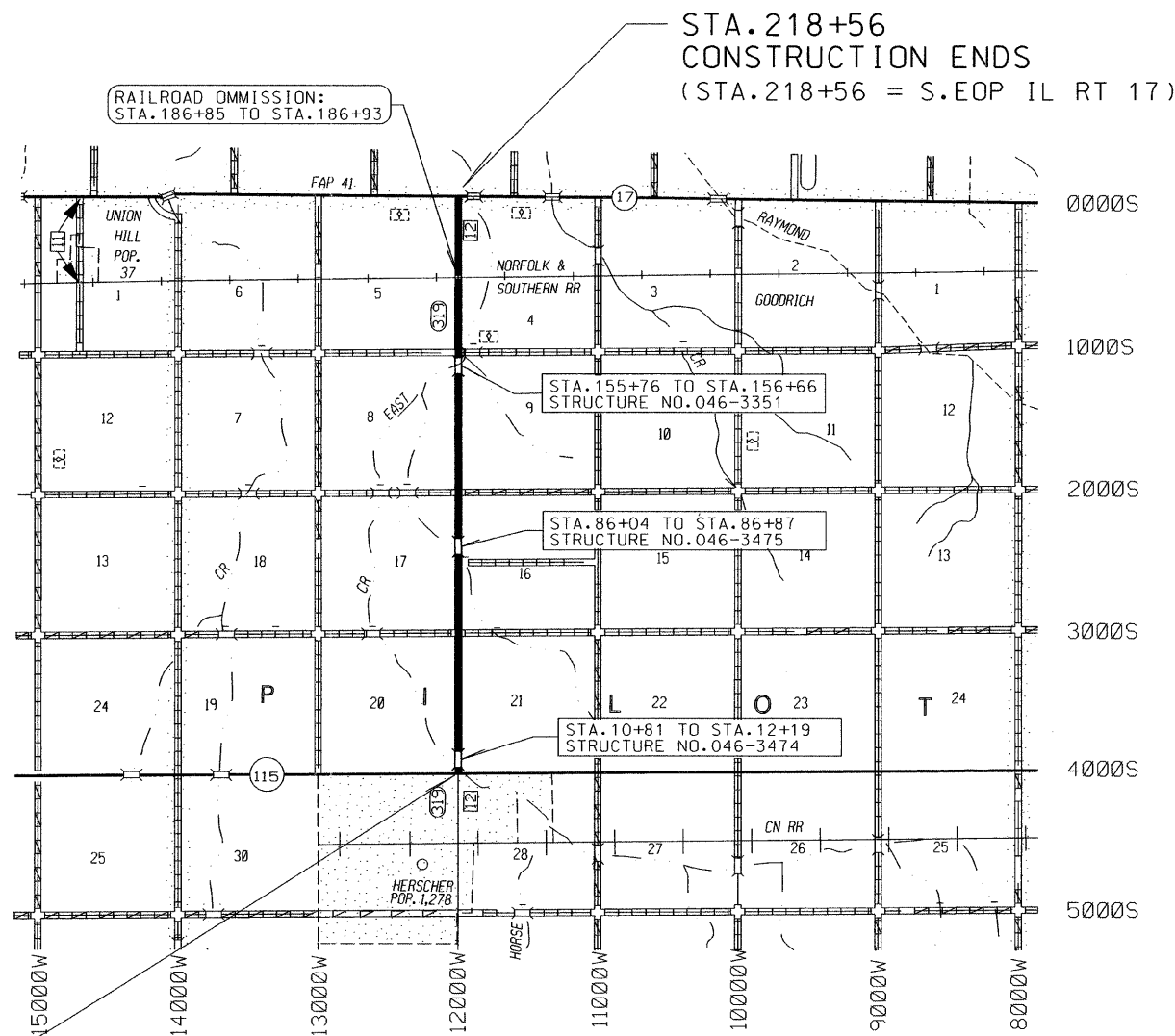


PROJECT LOCATION



THE ACCEPTANCE OF THIS PROJECT IS BASED ON THE MINIMUM DESIGN CRITERIA FOR LOCAL AGENCY PAVEMENT PRESERVATION POLICY (LAPP) PROPERTIES

CLASS II ROAD
2011 CURRENT A.D.T. = 2186
2015 DESIGN A.D.T. = 2276
DESIGN SPEED = 55 M.P.H.
ROADWAY CLASSIFICATION = COLLECTOR



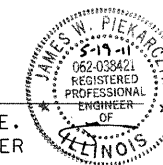
LOCATION MAP

NET LENGTH = 21,763 LIN FT = 4.12 MILES

STATE OF ILLINOIS
DEPARTMENT OF TRANSPORTATION
DIVISION OF HIGHWAYS

Approved 5-19 2011

James W. Piekarczyk
JAMES W. PIEKARCZYK, P.E.
KANKAKEE COUNTY ENGINEER



Passed May 25, 2011

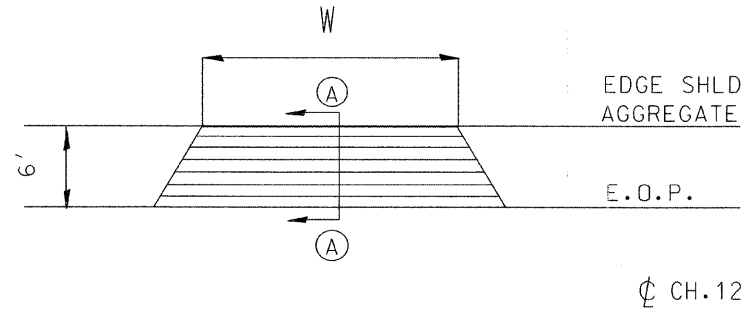
Eric Therkildsen
DISTRICT 3 IMPLEMENTATION ENGINEER

Releasing for Bid Based on Limited Review May 25, 2011

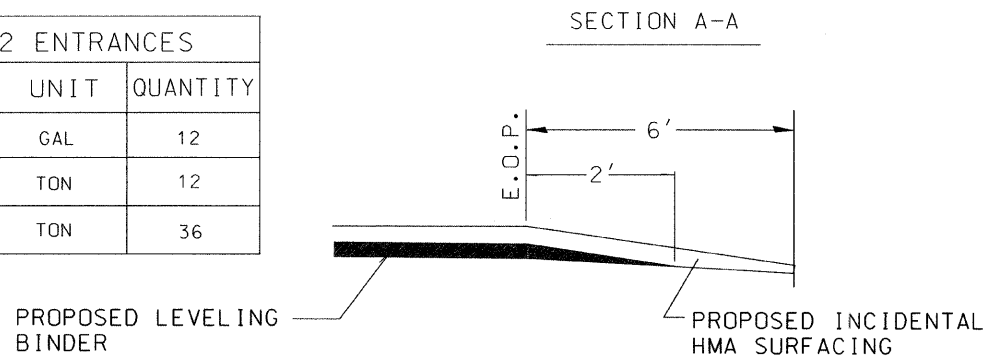
Eric Therkildsen
ERIC THERKILDTSEN
REGION 2 ENGINEER (ACTING)

TYPICAL ENTRANCE DETAIL

W :WIDTH OF APPROACH PADS IS ESTIMATED AT 20' PER ENTRANCE . THE ACTUAL CONSTRUCTED WIDTH MAY VARY AS DIRECTED BY THE ENGINEER TO FIT THE EXISTING ENTRANCES . FIELD ENTRANCES SHALL NOT RECEIVE HOT-MIX ASPHALT SURFACING UNLESS DIRECTED BY THE ENGINEER.



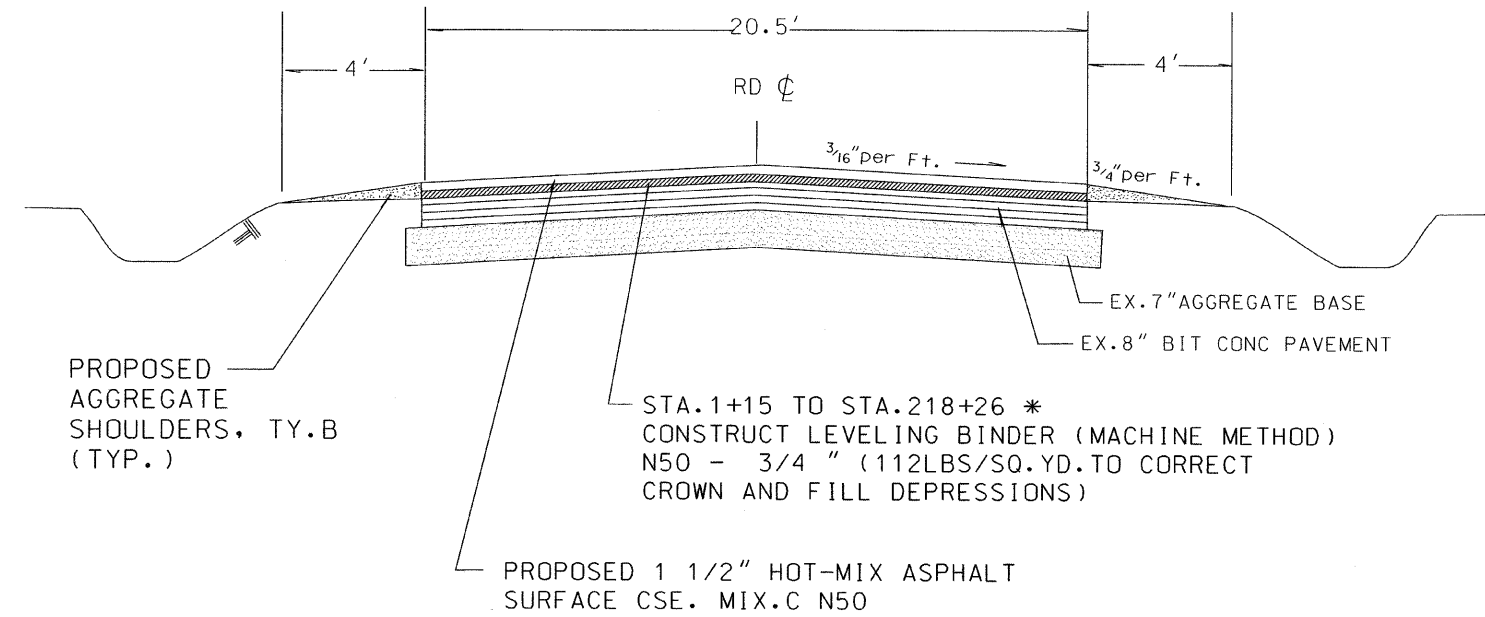
ESTIMATED QUANTITIES- 12 ENTRANCES		
ITEM	UNIT	QUANTITY
BITUMINOUS MATERIALS (PRIME COAT)	GAL	12
LEVELING BINDER (MM) N50	TON	12
INCIDENTAL HMA SURFACING	TON	36



SECTION	COUNTY	TOTAL SHEETS	SHEET NO.
09-00027-01-RS	KANKAKEE	3	2
CONTRACT NO. 87490			

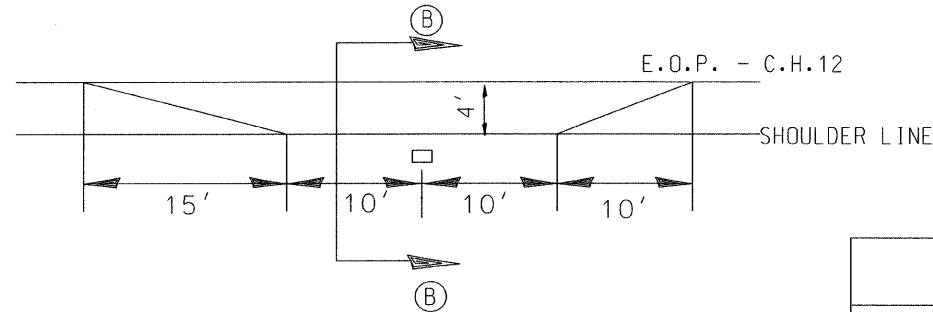
TYPICAL CROSS SECTION

STA. 0+85 TO STA. 218+56

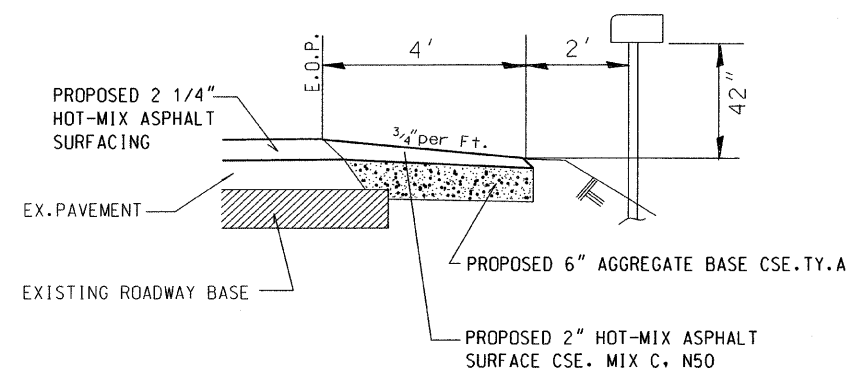


* LEVELING BINDER OMISSIONS:
 STA. 186+55 to STA. 187+23
 STA. 10+31 to STA. 12+69
 STA. 85+54 to STA. 87+37
 STA. 155+26 to STA. 157+16

TYPICAL MAILBOX TURNOUT DETAIL



SECTION B-B



ESTIMATED QUANTITIES - 6 MAILBOX TURNOUTS		
ITEM	UNIT	QUANTITY
EARTH EXCAVATION	CU YD	20
AGGREGATE BASE CSE. TY. A	TON	42
BIT. MATERIALS (PRIME COAT)	GAL	6
HOT-MIX ASPHALT SURFACE CSE MIX C N50	TON	18

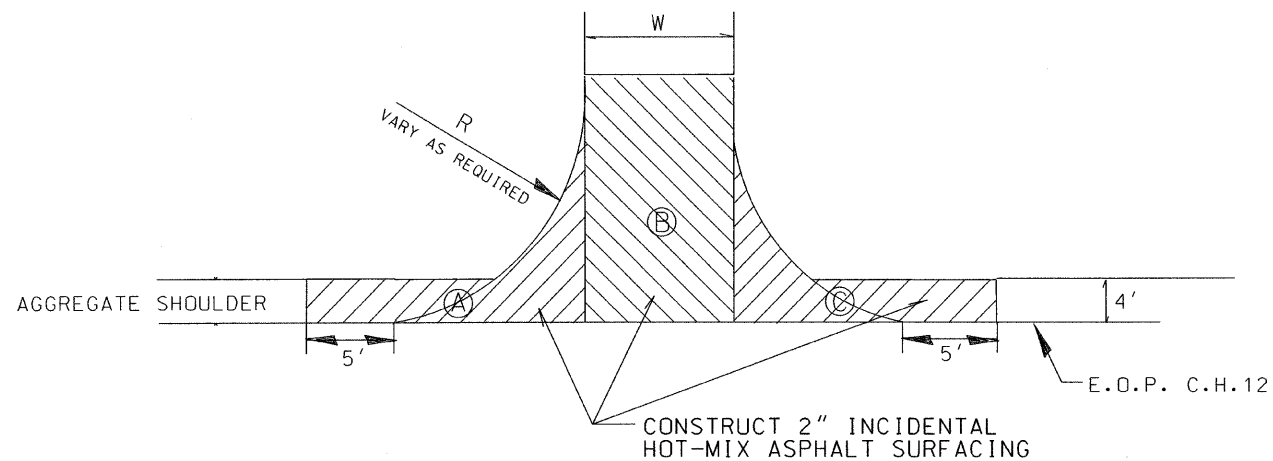
MAILBOX TURNOUT SCHEDULE

STATION	SIDE
25+36	LT
39+90	LT
42+63	LT
130+97	RT
170+97	RT
177+80	LT

ESTIMATED QUANTITIES ON TANGENTS

ITEM	UNIT	QUANTITY
AGGREGATE SHOULDERS TY.B	TON	2777
BITUMINOUS MATERIALS (PRIME COAT)	GALLON	9765
AGGREGATE (PRIME COAT)	TON	195
HOT-MIX ASPHALT SURFACE CSE MIX C, N50	TON	4199
LEVELING BINDER (MM) N50	TON	2692
SHORT-TERM PAVEMENT MARKING	FOOT	4287

INTERSECTION DETAIL



INTERSECTION QUANTITY SCHEDULE

STATION	AREA	WIDTH	RADIUS	INCIDENTAL HMA SURFACING (TON)	BIT. MATRLS. (PRIME COAT) (GAL)	AGGREGATE (PRIME COAT) (TON)	LOCATION
53+50LT	A B C	20	30	15	5	0.5	3000S
56+05RT	A B C	20	30	15	5	0.5	3000S
80+50RT	A B C	20	30	15	5	0.5	2500S
107+45LT	A B C	20	30	15	5	0.5	2000S
107+45RT	A B C	20	30	15	5	0.5	2000S
160+60LT	A B C	20	30	15	5	0.5	1000S
160+60RT	A B C	20	30	15	5	0.5	1000S
TOTALS				105	30	3	

Pavement Design Data

Design Period = 8 Years

ADT = 2186 (2011) 2276 (2015)

P.V. = 88% = 2003 S.U. = 7% = 159 M.U. = 5% = 114

I.B.R. = 3.0

T.F. = 0.25

S.N. = 3.35

Pavement Structure Number

Ex. 7" AGGREGATE BASE (crushed) 7 x 0.08 = 0.56

Ex. 1.5" BIT A-3 1.5 x 0.15 = 0.23

Ex. 2.75" CLASS B 2.75 x 0.17 = 0.47

Ex. 4" CL-1 4 x 0.30 = 0.90

Prop. 2.25" HMA Surface Cse. 2.25 x 0.40 = 1.20

3.35

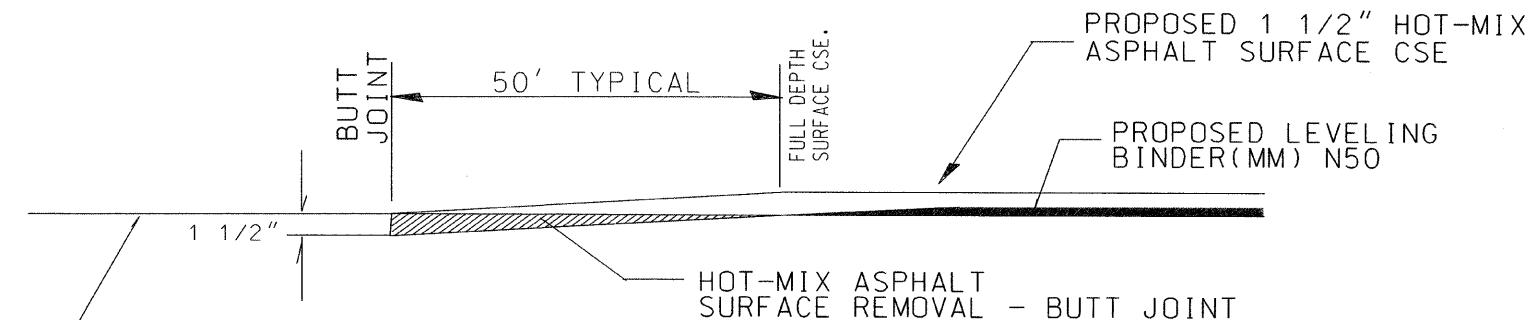
Marshall Stability \geq 1700

	LEVEL BINDER	HMA SURFACE
PG GRADE	PG58-22	PG58-22
MAX % RAP ALLOWABLE**	SEE SPECIAL PROVISION	SEE SPECIAL PROVISION
DESIGN AIR VOIDS	4.0%	4.0%
MIXTURE COMPOSITION	IL 9.5	IL 9.5
FRICTION AGGREGATE	MIXTURE C	MIXTURE C
DENSITY TEST METHOD	SATISFACTION OF THE ENGINEER	CORRELATION

** IF RAP OPTION IS SELECTED, THE ASPHALT CEMENT GRADE MAY NEED TO BE ADJUSTED. THIS WILL BE DETERMINED BY THE ENGINEER.

SECTION	COUNTY	TOTAL SHEETS	SHEET NO.
09-00027-01-RS	KANKAKEE	3	3
CONTRACT NO. 87490			

PAVEMENT REMOVAL DETAILS



HOT-MIX ASPHALT SURFACE REMOVAL AND TEMPORARY RAMP SCHEDULE

STATION	HMA SURFACE REMOVAL - BUTT JOINT	HMA SURFACE REMOVAL - 1 1/2" *	TEMPORARY RAMP (3' Wide)
0+85	68		7
10+31 to 12+69		734	
85+54 to 87+37		532	
155+26 to 157+16		518	
186+85	176		7
186+93	68		7
218+56	68		30
TOTALS	380 SQ YD	1784 SQ YD	51 SQ YD

BRIDGE DECKS *

LOCATIONS	WIDTH
10+81 to 12+19	33'
86+04 to 86+87	33'
155+76 to 156+66	29'

* RESURFACE WITH 1 1/2" HMA SURFACE CSE. (INCLUDED IN TANGENT)

GENERAL NOTES:

- IT SHALL BE THE CONTRACTOR'S RESPONSIBILITY TO DETERMINE THE ACTUAL LOCATION OF ALL UTILITY LOCATIONS.
- PERMANENT PAVEMENT MARKINGS TO BE INSTALLED BY THE KANKAKEE COUNTY HIGHWAY DEPT.
- FLAGMEN SHALL BE REQUIRED DURING PRIMING OPERATIONS.
- "BUMP SIGNS" SHALL BE REQUIRED AT ALL TANGENT HOT-MIX ASPHALT SURFACE REMOVAL - BUTT JOINT LOCATIONS. THE COST SHALL BE CONSIDERED AS INCLUDED IN THE TRAFFIC CONTROL PAY ITEM.