

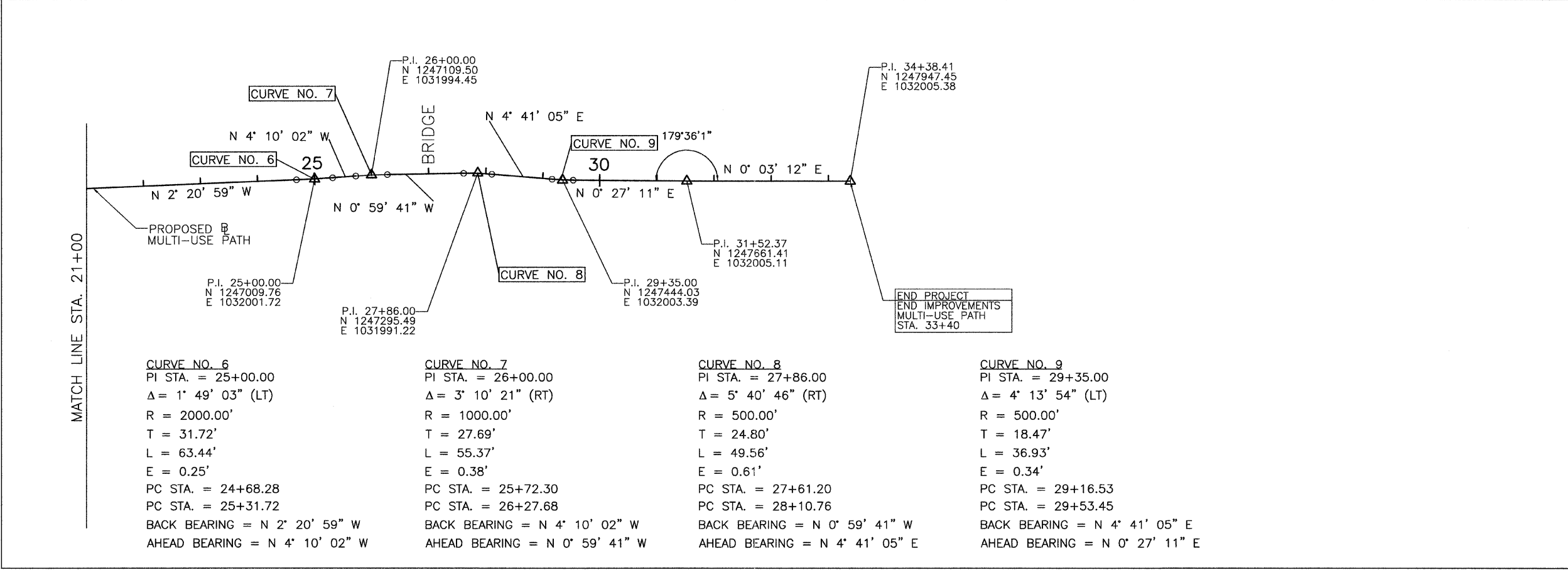
**CURVE NO. 1**  
PI STA. = 1+12.83  
 $\Delta = 91^\circ 35' 46''$  (LT)  
R = 100.00'  
T = 102.83'  
L = 159.87'  
E = 43.43'  
PC STA. = 0+10.00  
PC STA. = 1+69.87  
BACK BEARING = N 89° 38' 48" E  
AHEAD BEARING = N 1° 56' 58" W

**CURVE NO. 2**  
PI STA. = 14+09.29  
 $\Delta = 22^\circ 14' 20''$  (RT)  
R = 300.00'  
T = 58.96'  
L = 116.44'  
E = 5.74'  
PC STA. = 13+50.32  
PC STA. = 14+66.77  
BACK BEARING = N 1° 28' 20" W  
AHEAD BEARING = N 20° 46' 01" E

**CURVE NO. 3**  
PI STA. = 15+90.98  
 $\Delta = 21^\circ 44' 39''$  (LT)  
R = 100.00'  
T = 19.21'  
L = 37.95'  
E = 1.83'  
PC STA. = 15+71.77  
PC STA. = 16+09.72  
BACK BEARING = N 20° 46' 01" E  
AHEAD BEARING = N 0° 58' 38" W

**CURVE NO. 4**  
PI STA. = 18+00.61  
 $\Delta = 27^\circ 42' 22''$  (LT)  
R = 100.00'  
T = 24.66'  
L = 48.36'  
E = 3.00'  
PC STA. = 17+75.95  
PC STA. = 18+24.30  
BACK BEARING = N 0° 58' 38" W  
AHEAD BEARING = N 28° 41' 00" W

**CURVE NO. 5**  
PI STA. = 19+06.09  
 $\Delta = 26^\circ 20' 01''$  (RT)  
R = 200.00'  
T = 46.79'  
L = 91.92'  
E = 5.40'  
PC STA. = 18+59.31  
PC STA. = 19+51.22  
BACK BEARING = N 28° 41' 00" W  
AHEAD BEARING = N 2° 20' 59" W



**CURVE NO. 6**  
PI STA. = 25+00.00  
 $\Delta = 1^\circ 49' 03''$  (LT)  
R = 2000.00'  
T = 31.72'  
L = 63.44'  
E = 0.25'  
PC STA. = 24+68.28  
PC STA. = 25+31.72  
BACK BEARING = N 2° 20' 59" W  
AHEAD BEARING = N 4° 10' 02" W

**CURVE NO. 7**  
PI STA. = 26+00.00  
 $\Delta = 3^\circ 10' 21''$  (RT)  
R = 1000.00'  
T = 27.69'  
L = 55.37'  
E = 0.38'  
PC STA. = 25+72.30  
PC STA. = 26+27.68  
BACK BEARING = N 4° 10' 02" W  
AHEAD BEARING = N 0° 59' 41" W

**CURVE NO. 8**  
PI STA. = 27+86.00  
 $\Delta = 5^\circ 40' 46''$  (RT)  
R = 500.00'  
T = 24.80'  
L = 49.56'  
E = 0.61'  
PC STA. = 27+61.20  
PC STA. = 28+10.76  
BACK BEARING = N 0° 59' 41" W  
AHEAD BEARING = N 4° 41' 05" E

**CURVE NO. 9**  
PI STA. = 29+35.00  
 $\Delta = 4^\circ 13' 54''$  (LT)  
R = 500.00'  
T = 18.47'  
L = 36.93'  
E = 0.34'  
PC STA. = 29+16.53  
PC STA. = 29+53.45  
BACK BEARING = N 4° 41' 05" E  
AHEAD BEARING = N 0° 27' 11" E