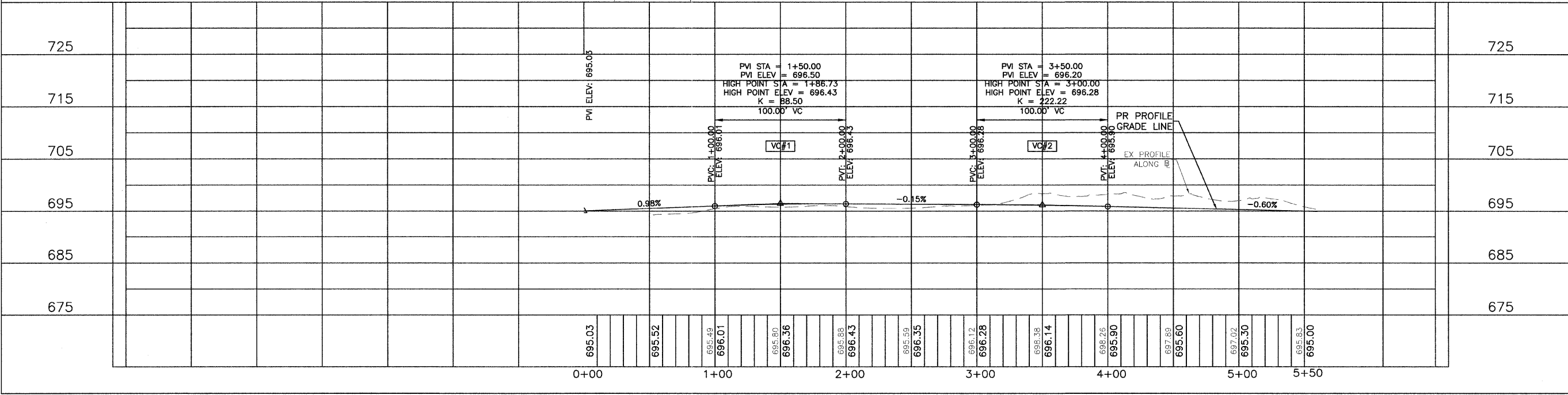
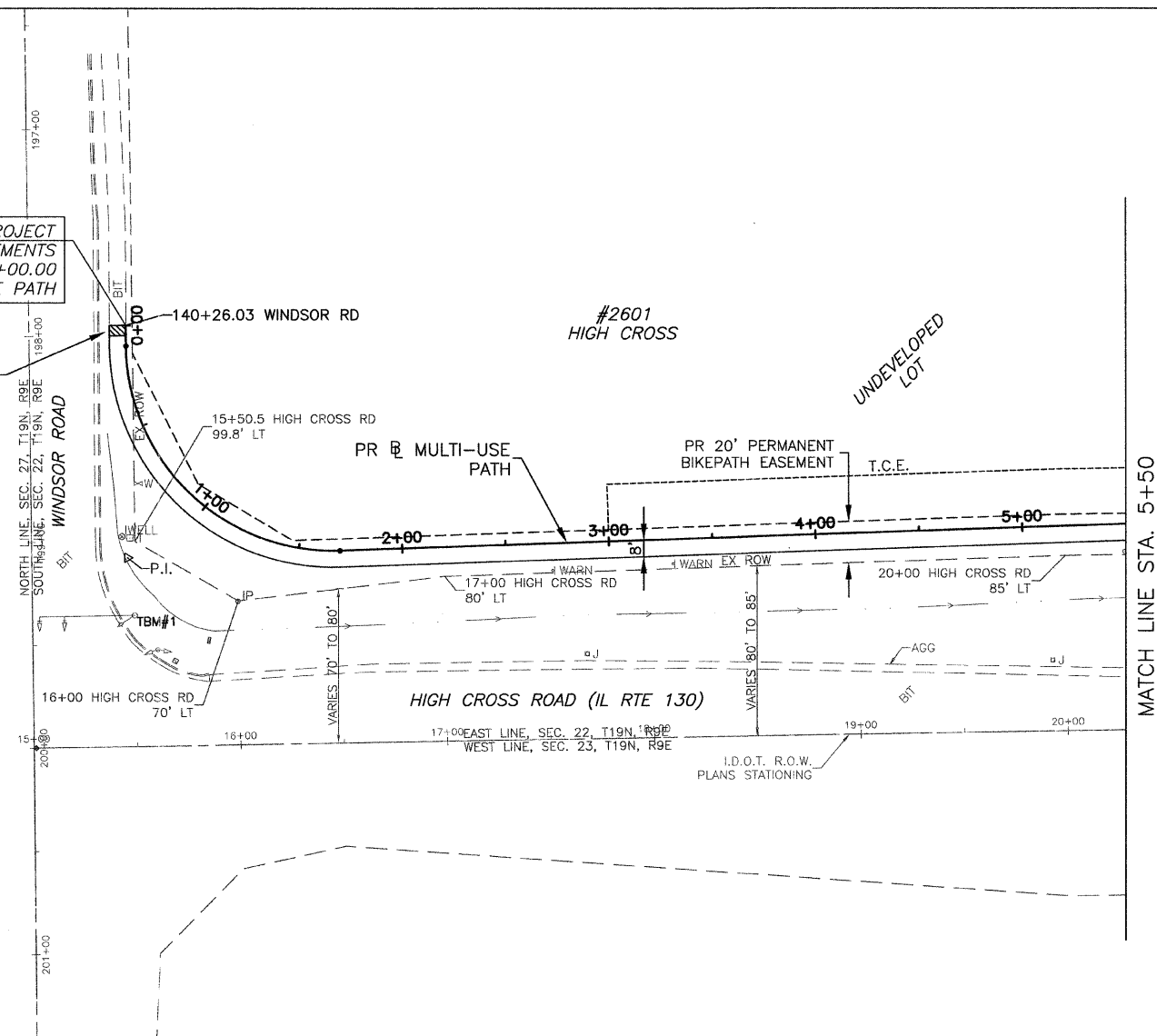


- LEGEND**
- HMA MULTI-USE PATH
 - PCC MULTI-USE PATH OR SIDEWALK
 - DETECTABLE WARNINGS
 - EX EXISTING
 - PR PROPOSED
 - T.C.E. TEMPORARY CONSTRUCTION EASEMENT

TBM #1: STA. 1+03.44, 62.68' RT. BLACK MARKED SQUARE ON THE NORTH SIDE OF MAST ARM FOUNDATION AT THE N.W. CORNER OF HIGH CROSS ROAD (IL RTE 130) AND WINDSOR ROAD. ELEV.= 694.81

BEGIN PROJECT
BEGIN IMPROVEMENTS
STA. 0+00.00
MULTI-USE PATH

SIDEWALK
REMOVAL
40 SQ.FT.



HIGH CROSS ROAD MULTI-USE PATH
PLAN AND PROFILE
STA. 0+00 TO STA. 5+50

DATED: 1/11
DESIGNED BY: CES
DRAWN BY: CES
CHECKED BY: GLJ
CITY SECTION
05-00416-00-BT