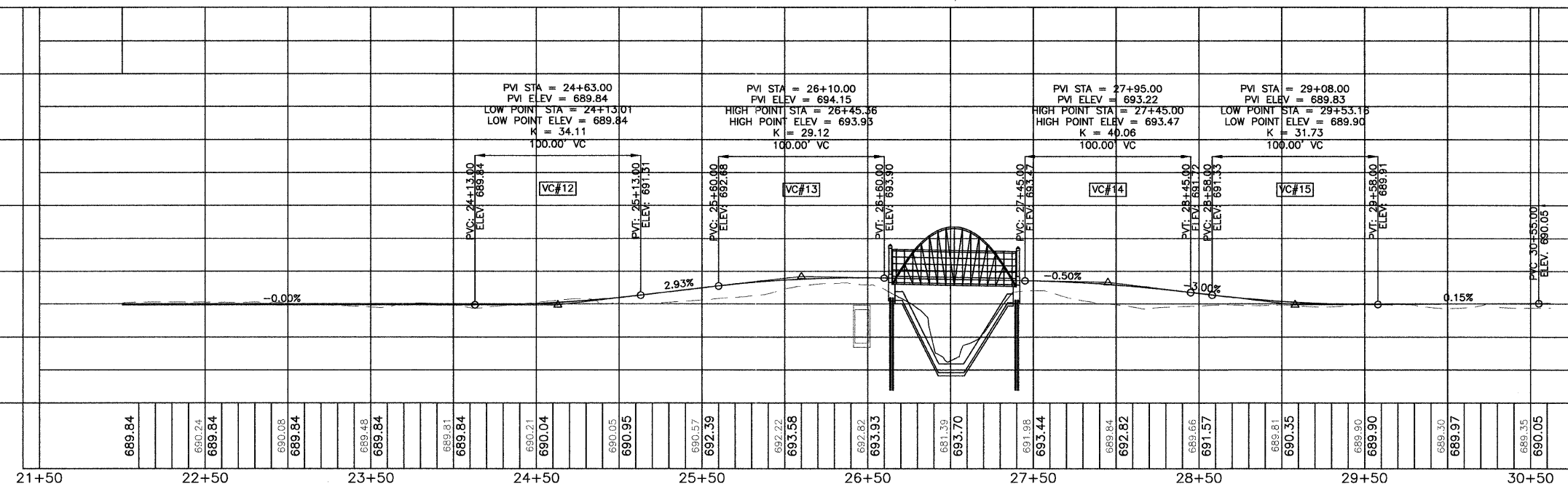
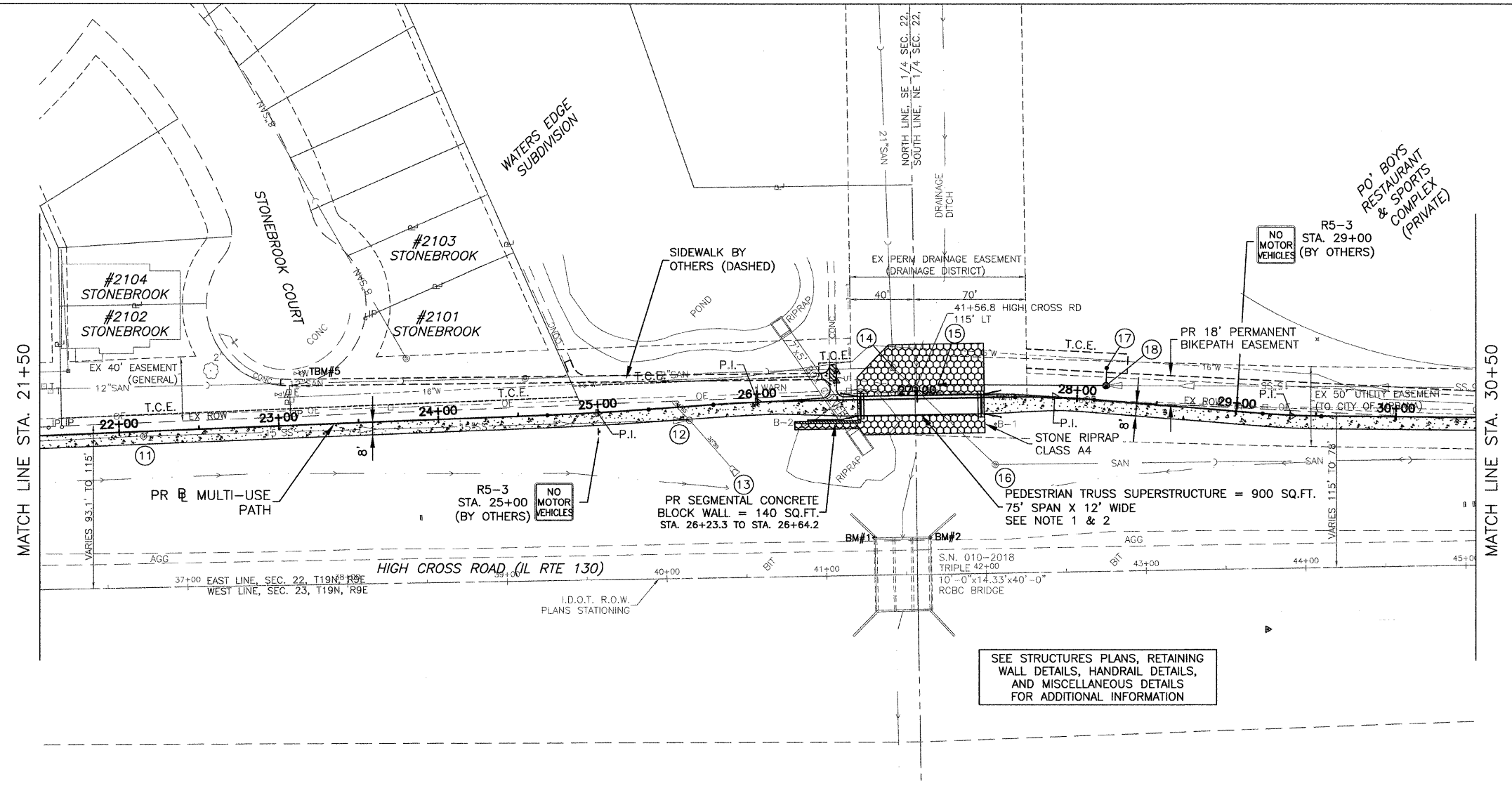


- LEGEND**
- HMA MULTI-USE PATH
 - PCC MULTI-USE PATH OR SIDEWALK
 - DETECTABLE WARNINGS
 - STONE RIPRAP CLASS A-4
 - EX EXISTING
 - PR PROPOSED
 - T.C.E. TEMPORARY CONSTRUCTION EASEMENT

TBM #5: STA. 23+15.65, 32.11' LT. N.E. FLANGE BOLT BY THE WORD 'USA' ON FIRE HYDRANT AT THE EAST END OF STONEBROOK COURT. ELEV.= 698.20

BM #1: STA. 26+71.63, 86.73' RT. BLACK MARKED SQUARE AT THE S.W. CORNER OF ABUTMENT OF BRIDGE S.N. 010-2018. ELEV.= 695.01

BM #2: STA. 27+06.51, 87.33' RT. CHISELED SQUARE AT THE N.W. CORNER OF WING WALL OF BRIDGE S.N. 010-2018. ELEV.= 695.01



CITY OF URBANA
PUBLIC WORKS
ENGINEERING DIVISION

DRAWN BY: CES
CHECKED BY: GLJ
CITY SECTION
05-00416-00-BT

HIGH CROSS ROAD MULTI-USE PATH
PLAN AND PROFILE
STA. 21+50 TO STA. 30+50

SHEET NO.
15
OF
40