

INDEX OF SHEETS

SHEET NO.	DESCRIPTION
1	TITLE SHEET
2	GENERAL NOTES
3	HIGHWAY STANDARDS AND LEGEND
4-5	SUMMARY OF QUANTITIES
6	SCHEDULE OF QUANTITIES
7	REMOVAL AND RELOCATION PLANS
8-9	BENCHMARK AND CONTROL POINT LOCATION MAP
10	DRAINAGE PLANS
11-40	LANDSCAPING PLANS AND DETAILS

STATE OF ILLINOIS
DEPARTMENT OF TRANSPORTATION
DIVISION OF HIGHWAYS
**PLANS FOR PROPOSED
STREET IMPROVEMENTS**

SCALES

PLAN	1 INCH = 20 FEET
PROFILE HORIZ.	1 INCH = 20 FEET
PROFILE VERT.	1 INCH = 5 FEET
CROSS SECTIONS HORIZ.	1 INCH = 10 FEET
CROSS SECTIONS VERT.	1 INCH = 5 FEET

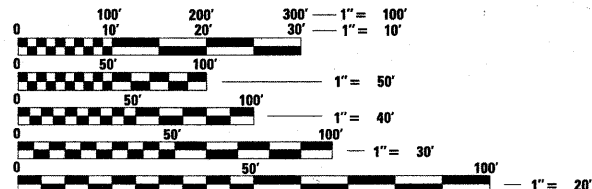
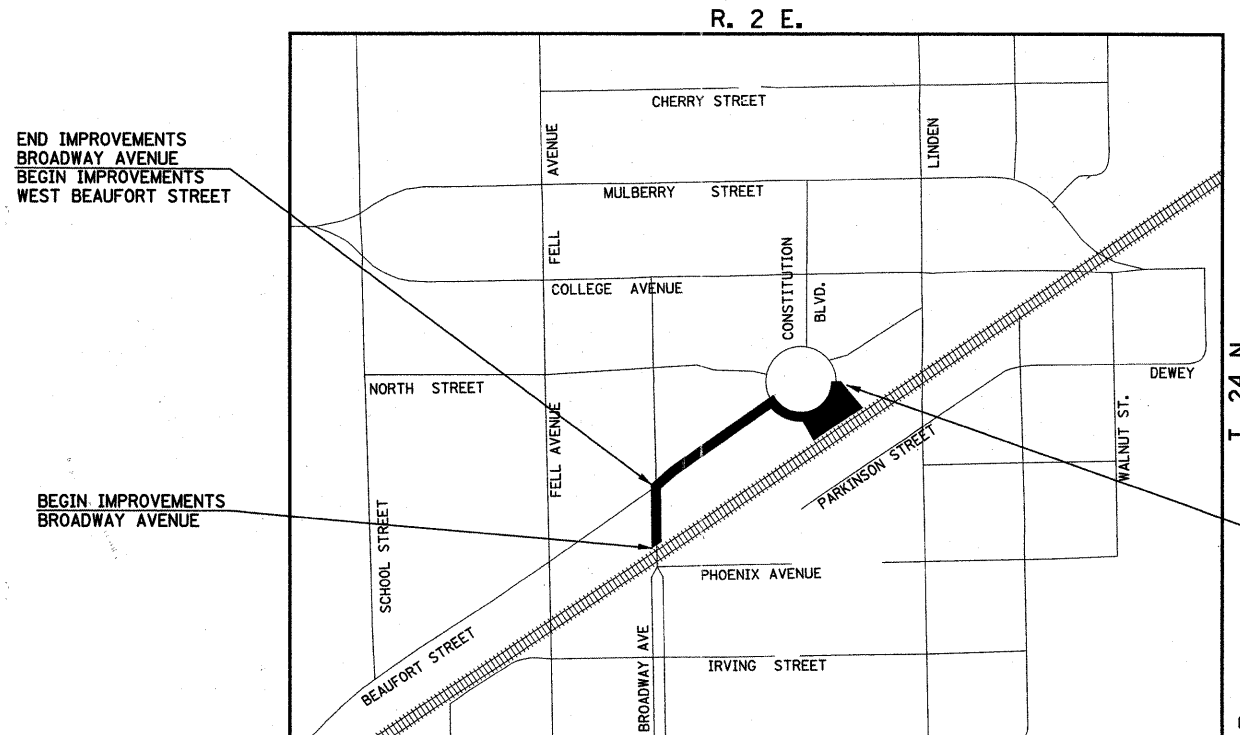
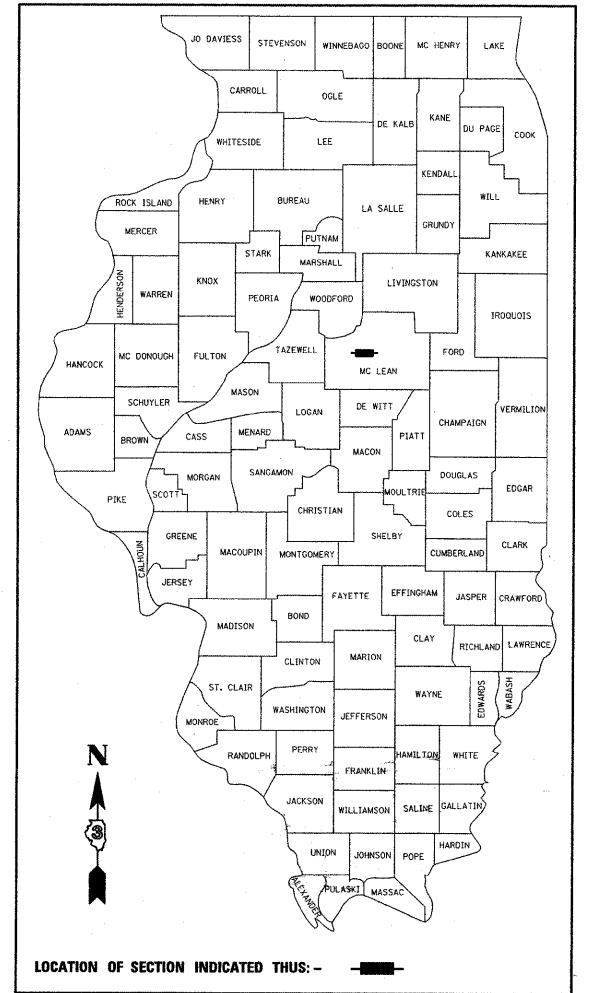
TOWN OF NORMAL
McLEAN COUNTY, ILLINOIS
SECTION: 10-00243-02-LS
PROJECT NO. TE-00D5(096)
JOB NO. C-95-322-11

FUNDING: ENHANCEMENT & LOCAL MATCH

UPTOWN NORMAL GATEWAY PLAZA

ILLINOIS HIGHWAY STANDARD DRAWINGS
(SEE SHEET NO. 3)

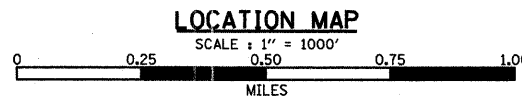
F.A.U. RTE.	SECTION	COUNTY	TOTAL SHEETS	SHEET NO.
	10-00243-02-LS	MCLEAN	40	1
		ILLINOIS	CONTRACT NO. 91461	



FULL SIZE PLANS HAVE BEEN PREPARED USING STANDARD ENGINEERING SCALES. REDUCED SIZED PLANS WILL NOT CONFORM TO STANDARD SCALES. IN MAKING MEASUREMENTS ON REDUCED PLANS, THE ABOVE SCALES MAY BE USED.

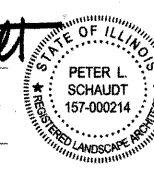
J.U.L.I.E.
JOINT UTILITY LOCATION INFORMATION FOR EXCAVATION
1-800-892-0123 OR 811

CONTRACT NO. 91461

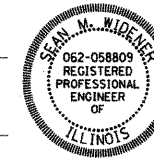


END IMPROVEMENTS
WEST BEAUFORT STREET

Peter L. Schaudt
LANDSCAPE ARCHITECT
HOERR SCHAUDT
SHEET 11 TO 40
DATE: 4.22.11
LICENSE EXPIRES 8-31-11



Sean M. Widener
PROFESSIONAL ENGINEER
CLARK DIETZ, INC.
SHEET 1 TO 10
DATE: 4.22.11
LICENSE EXPIRES 11-30-11



TOWN OF NORMAL

APPROVED April 22 2011
Jane C. Blum
TOWN ENGINEER

PASSED 5/16 2011
[Signature]
DISTRICT FIVE ENGINEER OF
LOCAL ROADS & STREETS

Releasing For
Bid Based on
Limited Review
MBW 18 2011
[Signature]
DEPUTY DIRECTOR OF HIGHWAYS,
REGION THREE ENGINEER
STATE OF ILLINOIS
DEPARTMENT OF TRANSPORTATION

**PRINTED BY THE AUTHORITY
OF THE STATE OF ILLINOIS**

Clark Dietz
ENGINEERS
125 WEST CHURCH STREET
CHAMPAIGN, IL 61820
PHONE : 217.373.8900
FAX : 217.373.8923