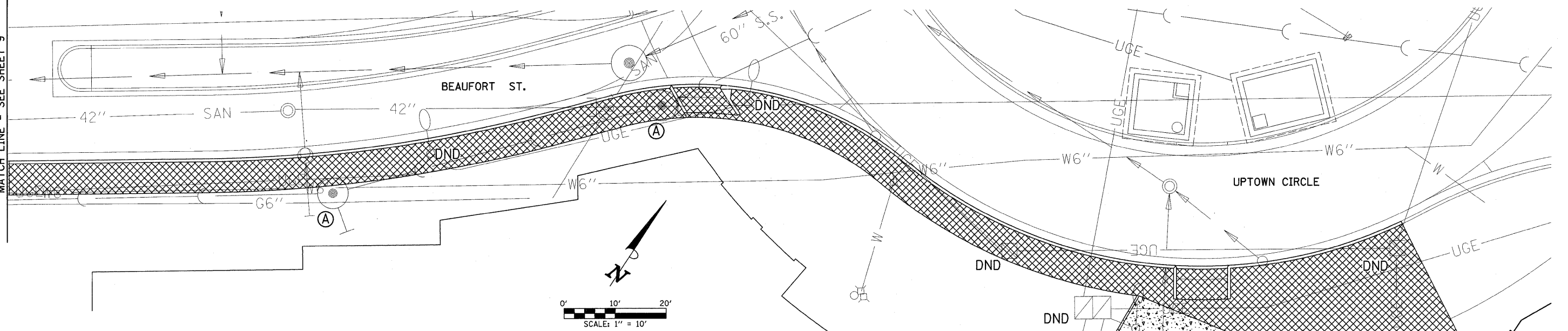


MATCH LINE - SEE SHEET 9



**TREE REMOVAL (6 TO 15 UNITS DIAMETER)**  
(20100110)

LOCATION	UNIT
PLAZA AREA	6
<b>TOTAL</b>	<b>6</b>

**PAVEMENT REMOVAL**  
(44000100)

LOCATION	SQ YD
PARKING LOT (PLAZA)	622
<b>TOTAL</b>	<b>622</b>

**CURB REMOVAL**  
(44000300)

LOCATION	FOOT
PARKING LOT (PLAZA)	230
<b>TOTAL</b>	<b>230</b>

**SIDEWALK REMOVAL**  
(44000600)

LOCATION	SQ FT
BEAUFORT STREET	795
UPTOWN CIRCLE & MUSEUM	2977
<b>SHEET TOTAL</b>	<b>3772</b>

**REMOVE AND RESET ORNAMENTAL FENCE**  
(Z0050600)

LOCATION	FOOT
SOUTHWEST MUSEUM CORNER	110
<b>TOTAL</b>	<b>110</b>

**REMOVE AND RE-ERECT SEGMENTAL BLOCK RETAINING WALL**  
(XX006188)

LOCATION	SQ FT
SOUTHWEST MUSEUM CORNER	160
<b>TOTAL</b>	<b>160</b>

**LEGEND**

- SIDEWALK REMOVAL
- PAVEMENT REMOVAL
- CURB REMOVAL
- STRUCTURE TO BE ADJUSTED OR RECONSTRUCTED (SEE PLANS)
- DO NOT DISTURB (SEE NOTE #3)

FOR PROPOSED CONSTRUCTION IN THIS AREA SEE DRAINAGE PLAN AND LANDSCAPING PLAN

EXISTING PAVEMENTS, CURBS AND GUTTERS, AND SIDEWALKS IN WHICH THE TOP SURFACE IS TO BE JOINED TO THE PROPOSED WORK SHALL BE SO JOINED THROUGH SAW CUT JUNCTURES.

THE REMOVAL AND RELOCATION OF VARIOUS TRAFFIC SIGNS SHOWN HEREON SHALL BE AS DIRECTED BY THE ENGINEER AND AS SPECIFIED IN THE STANDARD SPECIFICATIONS. THIS WORK SHALL NOT BE PAID FOR SEPARATELY AND IS CONSIDERED AS INCLUDED IN THE VARIOUS REMOVAL ITEMS.

**EXISTING FIELD CONDITIONS**

DUE TO ONGOING UTILITY CONSTRUCTION AND OTHER BUILDING PROJECTS IN THE VICINITY OF THIS PROJECT, THE EXISTING TOPOGRAPHIC FEATURES MAY BE DIFFERENT FROM THE FEATURES SHOWN ON THE PLANS. THE REMOVAL AND RELOCATION QUANTITIES WILL BE MEASURED IN PLACE TO REFLECT THE EXACT FIELD CONDITIONS. THE CONTRACTOR SHALL NOTIFY THE ENGINEER OF ANY CHANGED FIELD CONDITIONS THAT ARE DISCOVERED PRIOR TO PERFORMING THE REMOVAL OR RELOCATION WORK. THE CONTRACTOR WILL BE PAID FOR ACTUAL QUANTITIES MEASURED IN PLACE AND NO ADDITIONAL COMPENSATION WILL BE ALLOWED DUE TO CHANGED FIELD CONDITIONS.

**NOTES**

- EXISTING FACILITIES FOR GAS, ELECTRIC, FIBER OPTIC, CABLE TELEVISION AND TELEPHONE THAT ARE IN CONFLICT WITH THE PROPOSED CONSTRUCTION SHALL BE ADJUSTED, MOVED OR REMOVED BY THE UTILITY OWNERS. THE ENGINEER SHALL COORDINATE THIS WORK WITH EACH UTILITY COMPANY.
- EXISTING ELECTRICAL FACILITIES THAT ARE OWNED BY THE TOWN OF NORMAL AND ARE IN CONFLICT WITH THE PROPOSED CONSTRUCTION SHALL BE ADJUSTED, MOVED, OR REMOVED BY OTHERS UNLESS NOTED OTHERWISE. SUCH ITEMS MAY INCLUDE HANDHOLES, JUNCTION BOXES, LIGHT POLES, LIGHT POLE FOUNDATIONS, CONDUIT AND CABLE.
- THE BIKE RACK AND BENCH SHALL BE REMOVED AND BECOME THE PROPERTY OF THE TOWN OF NORMAL. THIS WORK SHALL NOT BE PAID FOR SEPARATELY AND IS CONSIDERED AS INCLUDED IN THE VARIOUS REMOVAL ITEMS.

REBUILD EXISTING HANDHOLE, SPECIAL = 1 EACH  
SEE LANDSCAPE PLANS AND SPECIAL PROVISIONS FOR ADDITIONAL INFORMATION

MODIFY EXISTING LIGHTING CONTROLLER = 1 EACH  
SEE LANDSCAPE PLANS AND SPECIAL PROVISIONS FOR ADDITIONAL INFORMATION

TREE TO BE REMOVED = 6 UNITS

REMOVE AND RESET ORNAMENTAL FENCE = 110 FOOT  
REMOVE AND RE-ERECT SEGMENTAL RETAINING WALL = 160 SQ FT  
SEE LANDSCAPE PLANS AND SPECIAL PROVISIONS FOR ADDITIONAL INFORMATION

CURB REMOVAL = 63 FOOT

CURB REMOVAL = 147 FOOT

FILE NAME = p:\N0240094\Plans\sheet\ 07 REMOVALS AND RELOCATION.dgn	DESIGNED - K.L.R.	REVISED -
PLOT DATE = 4/22/2011 11:14:34 AM	DRAWN - K.L.R.	REVISED -
	CHECKED - S.M.W.	REVISED -
	DATE - 4-11	REVISED -

STATE OF ILLINOIS DEPARTMENT OF TRANSPORTATION	DESIGNED - K.L.R.	REVISED -
	DRAWN - K.L.R.	REVISED -
	CHECKED - S.M.W.	REVISED -
	DATE - 4-11	REVISED -

STATE OF ILLINOIS  
DEPARTMENT OF TRANSPORTATION

**REMOVALS AND RELOCATION**

SCALE: 1"=10' SHEET NO. 8 OF 40 SHEETS STA. TO STA.

F.A.I.D. RTE.	SECTION	COUNTY	TOTAL SHEETS	SHEET NO.
	10-00243-02-LS	MCLEAN	40	8
FED. ROAD DIST. NO.		ILLINOIS	FED. AID PROJECT	
		CONTRACT NO. 91461		