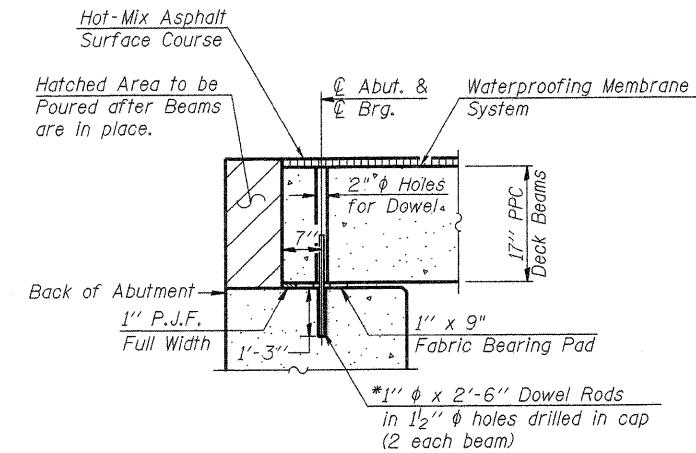
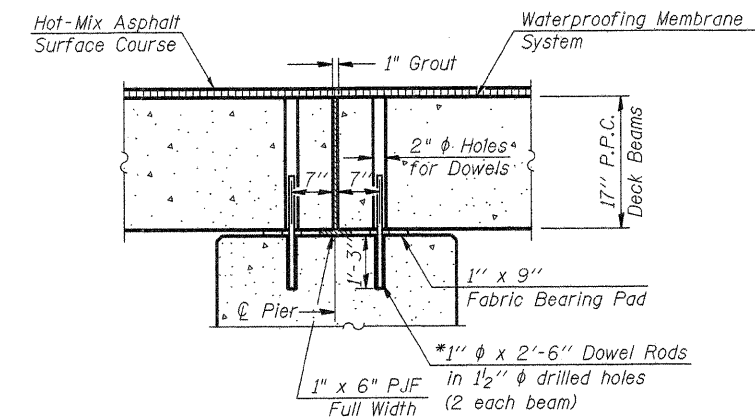


**HALF CROSS SECTION**

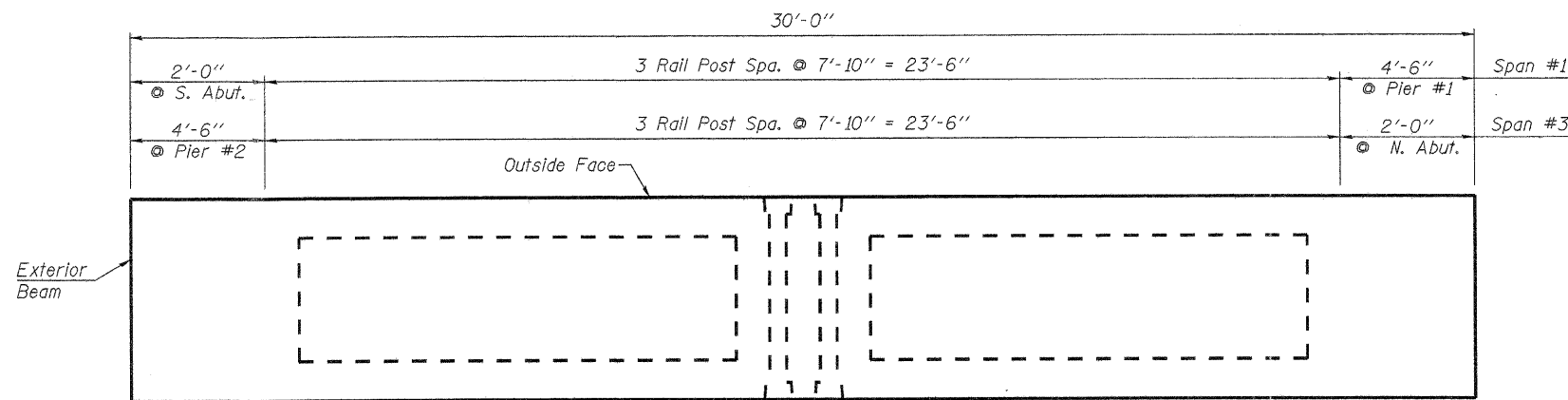


**SEC. THRU ABUT.**

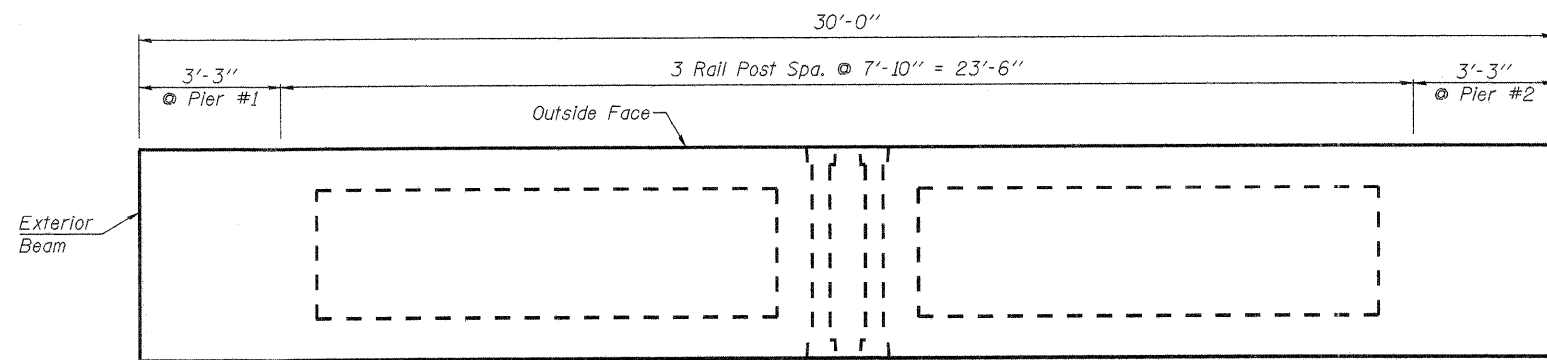
\* Note: After beams are in place, 1/2" holes shall be drilled into the Substructure, and the dowel rods grouted in place and allowed to cure (Min. 24 Hrs.) prior to grouting shear key.



**SEC. AT PIER**

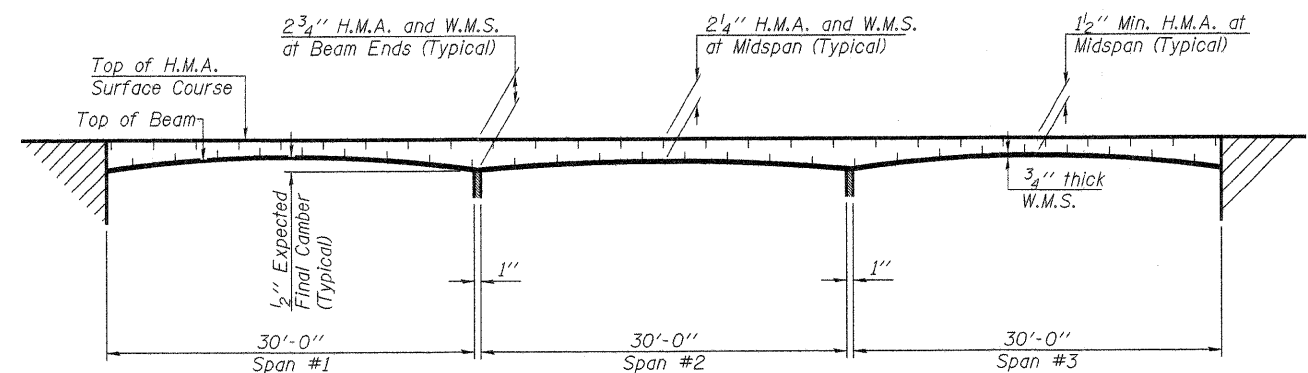


**SPAN #1 OR #3**



**SPAN #2**

**RAIL POST SPACING PLAN**



**HOT-MIX ASPHALT SURFACE PROFILE**

FILE NAME = 10-273\_SUPER.DGN

USER NAME = S.A.P.

DESIGNED - A.L.S.

REVISED -

PLOT SCALE = XXX

DRAWN - S.A.P.

REVISED -

PLOT DATE = 04/19/11

CHECKED - A.L.S. & A.R.K.

REVISED -



**FEHR-GRAHAM & ASSOCIATES, LLC**  
ENGINEERING AND SCIENCE CONSULTANTS  
FREEPORT, IL ROCKFORD, IL ROCHELLE, IL MONROE, WI SPRINGFIELD, IL

**SUPERSTRUCTURE**  
S.N. 084-3443

C.H.	SECTION	COUNTY	TOTAL SHEETS	SHEET NO.
48	08-00095-00-BR	SANGAMON	18	6
CONTRACT NO. 93553				

ILLINOIS FED. AID PROJECT