

GENERAL NOTES:

THIS SECTION SHALL BE CONSTRUCTED IN ACCORDANCE WITH THE PLANS, SPECIAL PROVISIONS AND "STANDARD SPECIFICATIONS FOR ROAD AND BRIDGE CONSTRUCTION", ADOPTED JANUARY 1, 2007.

THE WORK INVOLVED ON THIS SECTION CONSISTS OF THE REMOVAL OF THE EXISTING STRUCTURE, THE CONSTRUCTION OF A 45 FOOT LONG SINGLE SPAN PRECAST PRESTRESSED CONCRETE DECK BEAM BRIDGE, EARTH APPROACHES, AGGREGATE SURFACE COURSE AND OTHER MISCELLANEOUS ITEMS NECESSARY TO COMPLETE THIS SECTION.

ALL ELEVATIONS ARE BASED ON U.S.G.S. MEAN SEA LEVEL DATUM.

IT SHALL BE THE CONTRACTOR'S RESPONSIBILITY TO CONTACT ALL THE UTILITIES, AFFECTING THE PROJECT, PRIOR TO CONSTRUCTION.

NOTE: CONSTRUCTION TRANSITIONS
STA. 2+25 TO STA. 2+75
STA. 6+50 TO STA. 7+00
ALL QUANTITIES ARE INCLUDED IN THE PROPOSAL



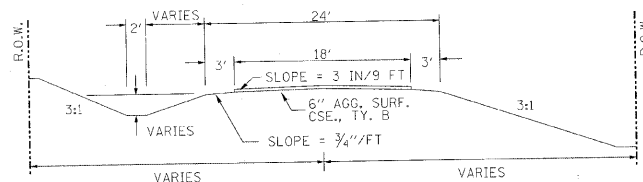
BILL B. AND DOROTHY A. HEADLEY

ROBERT A. HEADLEY JR.

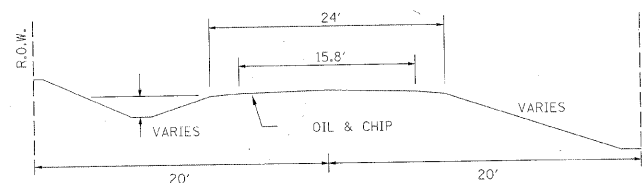
RICHARD L. AND PEGGY S. MATHIS

BRYAN D. AND TONYA L. HEADLEY

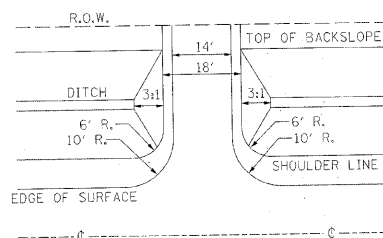
TYPICAL CROSS SECTION PROPOSED



TYPICAL CROSS SECTION EXISTING



PRIVATE ENTRANCE DETAIL



NOTE: CONSTRUCT SPECIAL DITCH

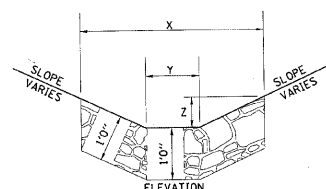
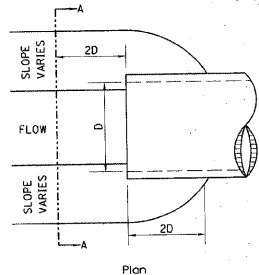
STA 2+50 TO STA 4+65 LT
STA 2+50 TO STA 4+82 RT
STA 5+20 TO STA 7+00 LT
STA 5+35 TO STA 7+00 RT

NOTE: CONSTRUCT STONE LINED DITCH

STA 4+25 TO STA 4+65 LT (0.62 TON/LIN FT)
STA 4+25 TO STA 4+82 RT (0.62 TON/LIN FT)
STA 5+20 TO STA 5+50 LT (0.62 TON/LIN FT)
STA 5+35 TO STA 5+50 RT (0.62 TON/LIN FT)
88 TON STONE LINED DITCH.

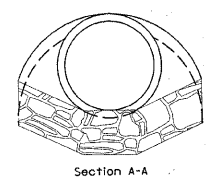
SEE STONE LINED DITCH DETAIL.

STONE LINED DITCH DESIGN

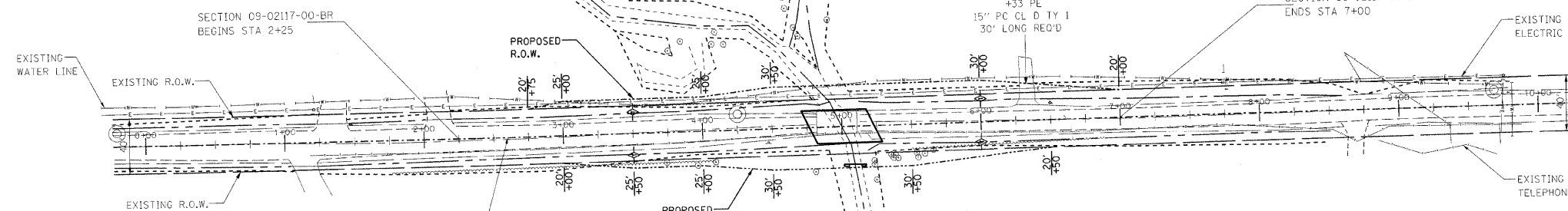


NOTE: BOTTOM OF DITCH

| SLOPE | ELEVATION | | |
|-------|-----------|------|------------------|
| | 1 1/2:1 | 2:1 | 3:1 |
| 2 FT | x = 5 FT | 6 FT | 8 FT |
| | y = 2 FT | 2 FT | 2 FT |
| | z = 1 FT | 1 FT | 1 FT |
| | 0.40 | 0.48 | 0.62 TON/LIN. FT |



NOTE: FOR PLACEMENT, QUALITY GRADATION AND OTHER MISCELLANEOUS REQUIREMENTS FOR STONE LINED DITCH-SEE SPECIAL PROVISIONS.



EXISTING BRIDGE STA 4+96.5; STRUCTURE NUMBER: 024-3021
A 31' LONG SINGLE SPAN BRIDGE WITH 3" WOOD DECK WITH 2" WOOD RUNNERS ON 1-12" C-CHANNEL AND 7-12" I-BEAMS WITH CONCRETE ABUTMENTS AND CONCRETE WINGWALLS ON THE NORTH SIDE; AND STEEL PLATE AT THE SOUTHEAST CORNER.

ONE (1) EACH-REMOVAL OF EXISTING STRUCTURES ALLOWED IN THIS PROPOSAL.

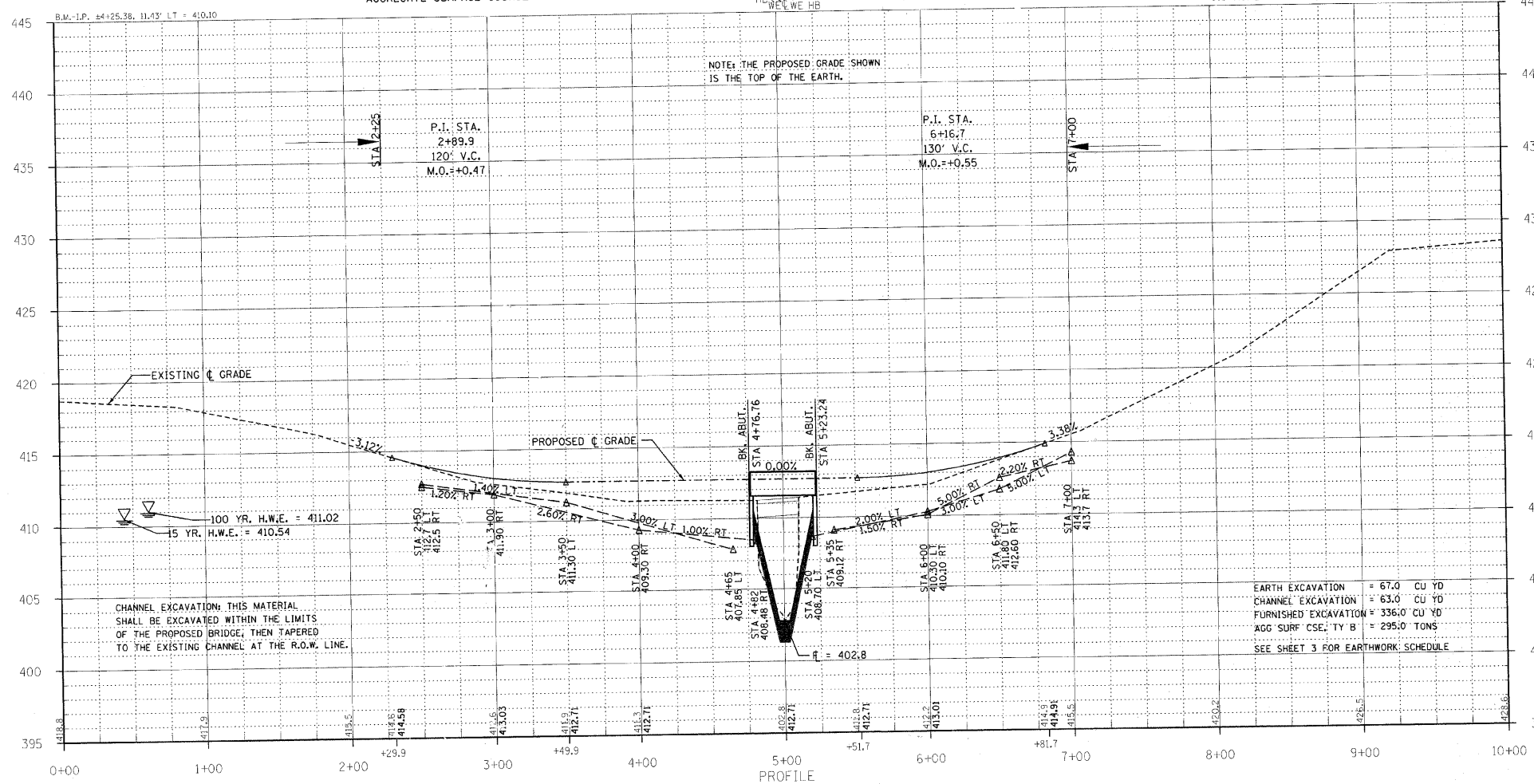
NOTE: FILL NEXT T^m BRIDGE TO BE AGGREGATE SURFACE COURSE

TEMPORARY DITCH CHECKS -
AGGREGATE (EROSION) CONTROL

PROPOSED STRUCTURE: NO. 024-3139, STA 5+00, A 45' LONG SINGLE SPAN P.P.C.D.B. BRIDGE WITH 17" DEPTH BEAMS, SPILL THROUGH TYPE ABUTMENTS, 24' WIDTH, 0% GRADE, 25° RT FWD. SKEW.

SEE SHEETS 5-12 FOR THE DESIGN AND BILL OF MATERIALS.

121.0 UNIT TREE REMOVAL (6 TO 15 UNITS DIAMETER)
24.0 UNIT TREE REMOVAL (OVER 15 UNITS DIAMETER)
28.0 FOOT TEMPORARY DITCH CHECKS
10.0 TONS AGGREGATE (EROSION CONTROL)
0.3 ACRES SEEDING, CLASS 2 SPECIAL REQUIRED



CHANNEL EXCAVATION: THIS MATERIAL SHALL BE EXCAVATED WITHIN THE LIMITS OF THE PROPOSED BRIDGE, THEN TAPERED TO THE EXISTING CHANNEL AT THE R.O.W. LINE.

EARTH EXCAVATION = 67.0 CU YD
CHANNEL EXCAVATION = 63.0 CU YD
FURNISHED EXCAVATION = 336.0 CU YD
AGG SURF CSE, TY B = 295.0 TONS
SEE SHEET 3 FOR EARTHWORK SCHEDULE

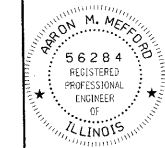
| | | | | |
|--------------------------------|----------------|------------------|--------------|-----------|
| T.R. | SECTION | COUNTY | TOTAL SHEETS | SHEET NO. |
| 25 | 09-02117-00-BR | EDWARDS | 13 | 2 |
| FED. ROAD DIST. NO. 1 ILLINOIS | | SUGAR CREEK | | |
| PROJECT * BR * 0410351 | | CONTRACT * 95661 | | |
| LEC JOB * HDL006ED | | | | |

323 W. 3RD ST.
P.O. BOX 160
MT. CARMEL, IL 62863
PHONE: (618)-262-8651
FAX: (618)-263-3327

405 W. STATE ST
SUITE 1
PRINCETON, IN 47670
PHONE: (812)-386-7611
FAX: (812)-385-2812



PROFESSIONAL DESIGN FIRM
LAND SURVEY & PROFESSIONAL ENGINEERING CORPORATION
184-000887
(62-032435)(35-002769)



AARON M. MEFFORD
NAME
SIGNATURE
DATE: 5-25-11
EXPIRES: 11-30-11

SUGAR CREEK
TOWNSHIP ROUTE 25
EDWARDS COUNTY, ILLINOIS

SHEET TITLE:

PLAN & PROFILE

SCALE: VARIES
BY: AMM
DATE: 5/25/11
REV:

2 OF 13 SHEETS

SHEET NO. 2