

INDEX OF SHEETS

SHEET NO.	DESCRIPTION
1	COVER SHEET
2	INDEX OF SHEETS, STATE HIGHWAY STANDARDS, AND GENERAL NOTES
3-6	SUMMARY OF QUANTITIES
7	ADA CURB RAMP SCHEDULE OF QUANTITIES
8	TYPICAL SECTIONS AND DETAILS
9-10	RESURFACING AND PAVEMENT MARKING PLANS
11-16	ADA CURB RAMP DETAILS
17-21	PROJECT DETAILS FOR ADA CURB RAMPS
22-32	DETECTOR LOOP REPLACEMENT AND APS PLANS
33	BD-08 DETAILS FOR FRAMES AND LIDS ADJUSTMENT WITH MILLING
34	BD-22 PAVEMENT PATCHING FOR HMA SURFACED PAVEMENT
35	BD-24 CURB OR CURB AND GUTTER REMOVAL AND REPLACEMENT
36	BD-32 BUTT JOINT AND HMA TAPER DETAILS
37	TC-10 TRAFFIC CONTROL AND PROTECTION FOR SIDE ROADS, INTERSECTIONS, AND DRIVEWAYS
38	TC-11 TYPICAL APPLICATIONS RAISED REFLECTIVE PAVEMENT MARKERS (SNOW-PLOW RESISTANT)
39	TC-13 DISTRICT ONE TYPICAL PAVEMENT MARKINGS
40	TC-14 TRAFFIC CONTROL AND PROTECTION AT TURN BAY (TO REMAIN OPEN TO TRAFFIC)
41	TC-16 SHORT TERM PAVEMENT MARKING LETTERS AND SYMBOLS
42	TC-22 ARTERIAL ROAD INFORMATION SIGN
43	TC-26 DRIVEWAY ENTRANCE SIGNING
44	TS-07 DETECTOR LOOP INSTALLATION DETAILS FOR ROADWAY RESURFACING

LIST OF STATE HIGHWAY STANDARDS

STANDARD NO.	TITLE
000001-08	STANDARD SYMBOLS, ABBREVIATIONS, AND PATTERNS
424001-11	PERPENDICULAR CURB RAMPS FOR SIDEWALKS
424006-05	DIAGONAL CURB RAMPS FOR SIDEWALKS
424011-04	CORNER PARALLEL CURB RAMPS FOR SIDEWALKS
424021-06	DEPRESSED CORNER FOR SIDEWALKS
424026-03	ENTRANCE/ALLEY PEDESTRIAN CROSSINGS
424031-02	MEDIAN PEDESTRIAN CROSSINGS
442201-03	CLASS C AND D PATCHES
604001-05	FRAME AND LIDS, TYPE 1
606001-08	CONCRETE CURB TYPE B AND COMBINATION CONCRETE CURB AND GUTTER
701006-05	OFF-ROAD OPERATIONS, 2L, 2W, 15' TO 24" FROM PAVEMENT EDGE
701101-05	OFF-ROAD OPERATIONS, MULTILANE, 15' TO 24" FROM PAVEMENT EDGE
701301-04	LANE CLOSURE, 2L, 2W, SHORT TIME OPERATIONS
701311-03	LANE CLOSURE, 2L, 2W, MOVING OPERATIONS-DAY ONLY
701426-09	LANE CLOSURE, MULTILANE, INTERMITTENT OR MOVING OPER., FOR SPEEDS = 45 MPH
701427-05	LANE CLOSURE, MULTILANE, INTERMITTENT OR MOVING OPER., FOR SPEEDS = 40 MPH
701501-06	URBAN LANE CLOSURE, 2L, 2W, UNDIVIDED
701601-09	URBAN LANE CLOSURE, MULTILANE, 1W OR 2W WITH NONTRAVERSABLE MEDIAN
701602-10	URBAN LANE CLOSURE, MULTILANE, 2W WITH BIDIRECT LEFT TURN LANE
701606-10	URBAN SINGLE LANE CLOSURE, MULTILANE, 2W WITH MOUNTABLE MEDIAN
701701-10	URBAN LANE CLOSURE, MULTILANE INTERSECTION
701801-06	SIDEWALK, CORNER, OR CROSSWALK CLOSURE
701901-08	TRAFFIC CONTROL DEVICES
780001-05	TYPICAL PAVEMENT MARKINGS
781001-04	TYPICAL APPLICATIONS RAISED REFLECTIVE PAVEMENT MARKERS
886001-01	DETECTOR LOOP INSTALLATIONS
886006-01	TYPICAL LAYOUT FOR DETECTION LOOPS

GENERAL NOTES

- BEFORE STARTING ANY EXCAVATION, THE CONTRACTOR SHALL CALL "J.U.L.I.E." AT (800) 892-0123 OR 811 FOR FIELD LOCATIONS OF BURIED UTILITY FACILITIES. 48 HOUR NOTICE IS REQUIRED.
- THE CONTRACTOR SHALL COORDINATE CONSTRUCTION ACTIVITIES WITH UTILITY COMPANIES, THE VILLAGE OF BUFFALO GROVE.
- THE CONTRACTOR WILL NOT BE ALLOWED TO SET UP A YARD OR FIELD OFFICE ON STATE PROPERTY WITHOUT WRITTEN PERMISSION FROM THE DEPARTMENT.
- THE CONTRACTOR SHALL CONTACT THE DISTRICT ONE TRAFFIC CONTROL SUPERVISOR KALPANA KANNAN-HOSADURGA, AT KALPANA.KANNAN-HOSADURGA@ILLINOIS.GOV A MINIMUM OF 72 HOURS IN ADVANCE OF BEGINNING WORK AND INSTALLATION.
- THE RESIDENT ENGINEER SHALL CONTACT FADI SULTAN, ARTERIAL TRAFFIC FIELD ENGINEER AT FADI.SULTAN@ILLINOIS.GOV A MINIMUM OF TWO (2) WEEKS PRIOR TO THE PLACEMENT OF PERMANENT PAVEMENT MARKINGS
- DO NOT SCALE PLANS FOR CONSTRUCTION DIMENSIONS.
- WHEN MILLED PAVEMENT IS OPEN TO TRAFFIC, THE MAXIMUM GRADE DIFFERENTIAL BETWEEN PASSES OF THE MILLING MACHINE SHALL NOT EXCEED 1½ INCHES. A MAXIMUM GRADE DIFFERENTIAL OF 3 INCHES MAY BE ALLOWED IF THE EDGE OF THE MILLING IS SLOPED AT A MINIMUM OF 1:3 (V:H) OR A NOTCHED LONGITUDINAL WEDGE IS USED.
- BUTT JOINTS SHALL BE INSTALLED AT THE ENDS OF ALL RESURFACING (WHERE RESURFACING MEETS EXISTING PAVEMENT) ACCORDING TO THE "BUTT JOINT AND HOT-MIX ASPHALT TAPER DETAILS" SHEET INCLUDED IN THE PLANS, UNLESS OTHERWISE SPECIFIED.
- UNLESS OTHER CONDITIONS WARRANT EXTENDED LANE CLOSURE AS DETERMINED AND APPROVED IN WRITING BY THE ENGINEER OR AS PROVIDED FOR IN THE CONTRACT SPECIFICATIONS, OVERNIGHT CLOSURES SHALL NOT BE ALLOWED FOR REHABILITATION PROJECTS INVOLVING DAYTIME MILLING, RESURFACING, AND CLASS D PATCHING OPERATIONS.
- THE CONTRACTOR SHALL EXERCISE CAUTION WHEN REMOVING OR EXCAVATING NEAR ALL EXISTING ITEMS WHICH WILL REMAIN. ANY DAMAGE DONE TO EXISTING ITEMS BY THE CONTRACTOR SHALL BE REPAIRED AT THE CONTRACTOR'S EXPENSE.
- THE CONTRACTOR SHALL BE REQUIRED TO PROVIDE ACCESS TO ABUTTING PROPERTIES AT ALL TIMES DURING THE CONSTRUCTION OF THIS PROJECT.
- THE LOCATION OF EXISTING DRAINAGE STRUCTURES, STORM SEWERS, WATER MAINS, SANITARY SEWERS, AND ANY OTHER PUBLIC OR PRIVATE UTILITIES AS SHOWN ON THE PLANS IS APPROXIMATE AND THEIR EXACT LOCATION IS TO BE DETERMINED IN THE FIELD BY THE CONTRACTOR.
- THE CONTRACTOR SHALL BE RESPONSIBLE FOR THE PROTECTION OF ALL UNDERGROUND AND SURFACE UTILITIES EVEN THOUGH THEY MIGHT NOT BE SHOWN IN THE PLANS. ANY UTILITY PROPERTY DAMAGED DURING CONSTRUCTION SHALL BE REPAIRED OR REPLACED TO THE SATISFACTION OF THE ENGINEER.
- ANY LOOSE MATERIAL DEPOSITED IN THE FLOW LINE OF DRAINAGE STRUCTURES WHICH OBSTRUCTS THE NATURAL FLOW OF WATER SHALL BE REMOVED AT THE CLOSE OF EACH WORKING DAY. PRIOR TO ACCEPTANCE OF THE IMPROVEMENT, ALL DRAINAGE STRUCTURES SHALL BE FREE OF DIRT AND DEBRIS. THIS WORK WILL NOT BE PAID FOR SEPARATELY, BUT SHALL BE CONSIDERED AS INCLUDED IN THE UNIT BID PRICES OF THE CONTRACT.
- THE CONTRACTOR SHALL MAINTAIN PEDESTRIAN ACCESS AT ALL TIMES DURING CONSTRUCTION.
- IT SHALL BE THE CONTRACTOR'S RESPONSIBILITY TO VERIFY ALL DIMENSIONS AND CONDITIONS EXISTING IN THE FIELD PRIOR TO CONSTRUCTION AND ORDERING OF MATERIALS.
- EXACT LOCATIONS OF PAVEMENT PATCHING AND CURB & GUTTER REMOVAL & REPLACEMENT WILL BE DETERMINED IN THE FIELD BY THE ENGINEER.
- ALL PAVEMENT MARKINGS SHALL BE PLACED THROUGHOUT THE IMPROVEMENT ACCORDING TO THE DISTRICT 1 TYPICAL PAVEMENT MARKING STANDARD DETAIL. ALL CROSSWALKS SHALL BE HIGH VISIBILITY OPTION (TC-13 TYPICAL CROSSWALK MARKING)
- ALL DAMAGE TO EXISTING PAVEMENT MARKINGS OR RAISED REFLECTIVE PAVEMENT MARKERS OUTSIDE THE REMOVAL LINE SHOWN ON THE PLANS SHALL BE REPLACED AT THE CONTRACTOR'S EXPENSE.
- PAVEMENT MARKING TAPE, TYPE III SHALL BE USED FOR TEMPORARY PAVEMENT MARKINGS ON ALL FINAL SURFACES.
- RELOCATION OF EXISTING PLANTER BOXES IS INCLUDED IN THE COST OF SIDEWALK REMOVAL.
- 2-FOOT TRANSITIONS SHALL BE USED TO MATCH PROPOSED CURB AND GUTTER ITEMS OR WORK TO EXISTING CURBS AND GUTTERS UNLESS OTHERWISE SHOWN. THE TRANSITIONS SHALL BE PAID FOR AT THE CONTRACT UNIT PRICE FOR THE PROPOSED ITEMS OF WORK.
- SAW CUTTING OF PAVEMENT, SIDEWALK, CURB & GUTTER, ETC. SHALL BE TO FULL DEPTH AND SHALL RESULT IN A CLEAN STRAIGHT EDGE ON THE PORTION REMAINING. ALL SAW CUTTING SHALL BE CONSIDERED INCLUDED IN THE COST OF THE ITEM REMOVED EXCEPT FOR CLASS A PATCHES .
- LANDSCAPED AREAS AFFECTED BY SIDEWALK CONSTRUCTION AND EXISTING SIDEWALK TO BE REMOVED WITHOUT PROPOSED REPLACEMENT SHALL BE RESTORED WITH "SODDING, SALT TOLERANT" AND "TOPSOIL FURNISH AND PLACE, 4-INCH" AS DIRECTED BY THE ENGINEER.
- THE SIDEWALK ON ONLY ONE SIDE OF THE ROAD MAY BE CLOSED AT ANY TIME, WHILE THE SIDEWALK ON THE OPPOSITE SIDE OF THE ROAD SHALL REMAIN OPEN AND FULLY ACCESSIBLE. THE CONTRACTOR SHALL PLAN AND SCHEDULE ALL WORK ACCORDINGLY.
- PROPOSED SIDEWALK RAMPS SHALL CONFORM TO CURRENT ADA REQUIREMENTS AND APPLICABLE STATE HIGHWAY STANDARDS TO THE EXTENT POSSIBLE, TO BE DETERMINED BY THE ENGINEER.
- FRAMES AND GRATES ADJUSTMENT OF PRIVATE UTILITIES WITHIN THE LIMITS OF THE IMPROVEMENTS SHALL BE PERFORMED BY THEIR RESPECTIVE OWNERS AND ARE NOT PART OF THIS CONTRACT.
- DRAINAGE ADJUSTMENT OR RECONSTRUCTION LOCATIONS WILL BE DETERMINED IN THE FIELD BY THE ENGINEER.
- ANY DETECTOR LOOPS DAMAGED OUTSIDE OF THE RESURFACING LIMITS SHALL BE REPLACED BY THE CONTRACTOR AT NO EXPENSE TO THE DEPARTMENT.
- BEFORE BEGINNING ANY WORK THE CONTRACTOR SHALL RETAIN AND RECORD FOR FUTURE REFERENCE, ALL EXISTING PAVEMENT MARKING LINES (AND RAISED REFLECTIVE PAVEMENT MARKERS) SO THAT THESE LOCATIONS CAN BE RE-ESTABLISHED FOR STRIPING. EXACT LOCATIONS OF ALL PAVEMENT MARKINGS SHALL BE AS SHOWN ON THE PLANS OR AS DIRECTED BY THE ENGINEER.
- THE CONTRACTOR SHALL CONTACT THE IDOT ROADSIDE DEVELOPMENT UNIT AT (847) 705-4171 AT LEAST TWO (2) WEEKS PRIOR TO BEGINNING LANDSCAPE AND FORESTRY WORK FOR LAYOUT.
- ALL MILLED SURFACES SHALL BE AT A UNIFORM CROSS SLOPE PER LANE AND FREE OF RIDGES BETWEEN PASSES. ANY DEVIATION SHALL BE CORRECTED AT NO COST TO THE DEPARTMENT.
- ONLY CORNERS WITH CURB RAMP IMPROVEMENT SYMBOLS WILL BE RECONSTRUCTED UNDER THIS CONTRACT UNLESS OTHERWISE DIRECTED BY THE ENGINEER
- CONTRACTOR SHALL VERIFY EXISTING CONDITIONS BEFORE ORDERING MATERIALS UNDER THIS CONTRACT.
- GEOTECHNICAL FABRIC FOR GROUND STABILIZATION AND/OR AGGREGATE SUBGRADE IMPROVEMENT (CU YD) HAVE BEEN PROVIDED FOR USE FOR SOILS THAT TEND TO BE UNSTABLE AND/OR UNSUITABLE. THE ACTUAL NEED FOR REMOVAL AND REPLACEMENT WITH ABOVE ITEMS WILL BE DETERMINED IN THE FIELD AT THE TIME OF CONSTRUCTION BY THE GEOTECHNICAL ENGINEER. ALL POTENTIALLY UNSTABLE SOILS SHOULD BE TESTED WITH A STATIC OR DYNAMIC CONE PENETROMETER AND TREATED IN ACCORDANCE WITH ARTICLE 301.04 OF THE SSRBC AND IDOT SUBGRADE STABILITY MANUAL. IF UNSTABLE AND/OR UNSUITABLE SOILS ARE NOT ENCOUNTERED, THEN THE QUANTITY SHALL BE DEDUCTED AND NO ADDITIONAL COMPENSATION WILL BE DUE TO THE CONTRACTOR.

MODEL: Default
FILE: \\nas0101\eng\Engineering\Live\Projects\31003_IDOT_DUB_HBR\W08 - 62N66\CADD\CADD_Sheets\CADD\163N66-2019\spare.dgn



USER NAME = j.davis	DESIGNED - MMA	REVISED -
	DRAWN - MMA	REVISED -
PLOT SCALE = 100.0000' / in.	CHECKED - JJD	REVISED -
PLOT DATE = 6/24/2022	DATE - 06/10/2022	REVISED -

**STATE OF ILLINOIS
DEPARTMENT OF TRANSPORTATION**

**INDEX OF SHEETS, STATE HIGHWAY STANDARDS, AND GENERAL NOTES
IL RTE 83 (LAKE ST) SMART OVERLAY**

SCALE: SHEET 1 OF 1 SHEETS STA. TO STA.

F.A.P. RTE.	SECTION	COUNTY	TOTAL SHEETS	SHEET NO.
344	2021-043-R5	LAKE	44	2
CONTRACT NO. 62N66				
ILLINOIS FED. AID PROJECT NHPP-MLJN(082)				

1 REVISED SHEET 7/14/2022

CODE NO.	ITEM	UNIT	TOTAL QUANTITY	CONSTRUCTION CODE			
				80% FED 20% STATE	80% FED 20% STATE	100% STATE	
				ROADWAY	SAFETY	ROADWAY	
				0005	0021	0005	
				URBAN	URBAN	URBAN	
20200100	EARTH EXCAVATION	CU YD	291 323	291 323			
20201200	REMOVAL AND DISPOSAL OF UNSUITABLE MATERIAL	CU YD	27	27			
21001000	GEOTECHNICAL FABRIC FOR GROUND STABILIZATION	SQ YD	162	162			
21101615	TOPSOIL FURNISH AND PLACE, 4"	SQ YD	303 301	303 301			
25200110	SODDING, SALT TOLERANT	SQ YD	303 301	303 301			
25200200	SUPPLEMENTAL WATERING	UNIT	1	1			
30300001	AGGREGATE SUBGRADE IMPROVEMENT	CU YD	27	27			
30300112	AGGREGATE SUBGRADE IMPROVEMENT 12"	SQ YD	243	243			
35101600	AGGREGATE BASE COURSE, TYPE B 4"	SQ YD	53	53			
35501308	HOT-MIX ASPHALT BASE COURSE, 6"	SQ YD	26	26			
35501332	HOT-MIX ASPHALT BASE COURSE, 12"	SQ YD	170	170			
35600724	HOT-MIX ASPHALT BASE COURSE WIDENING, 12"	SQ YD	74	74			
40600290	BITUMINOUS MATERIALS (TACK COAT)	POUND	11579	11579			
40600370	LONGITUDINAL JOINT SEALANT	FOOT	14332	14332			

* SPECIALTY ITEMS

CODE NO.	ITEM	UNIT	TOTAL QUANTITY	CONSTRUCTION CODE			
				80% FED 20% STATE	80% FED 20% STATE	100% STATE	
				ROADWAY	SAFETY	ROADWAY	
				0005	0021	0005	
				URBAN	URBAN	URBAN	
40600400	MIXTURE FOR CRACKS, JOINTS, AND FLANGEWAYS	TON	24	24			
40600982	HOT-MIX ASPHALT SURFACE REMOVAL - BUTT JOINT	SQ YD	212	212			
40603085	HOT-MIX ASPHALT BINDER COURSE, IL-19.0, N70	TON	31	31			
40604060	HOT-MIX ASPHALT SURFACE COURSE, IL-9.5, MIX "D", N50	TON	3	3			
40604062	HOT-MIX ASPHALT SURFACE COURSE, IL-9.5, MIX "D", N70	TON	2162	2162			
42001300	PROTECTIVE COAT	SQ YD	1126 1119	1126 1119			
42400200	PORTLAND CEMENT CONCRETE SIDEWALK 5 INCH	SQ FT	5740 5668	5740 5668			
42400410	PORTLAND CEMENT CONCRETE SIDEWALK 8 INCH	SQ FT	1630	1630			
42400800	DETECTABLE WARNINGS	SQ FT	350	350			
44000100	PAVEMENT REMOVAL	SQ YD	49	49			
44000155	HOT-MIX ASPHALT SURFACE REMOVAL, 1 1/2"	SQ YD	25452	25452			
44000200	DRIVEWAY PAVEMENT REMOVAL	SQ YD	26	26			
44000500	COMBINATION CURB AND GUTTER REMOVAL	FOOT	840	840			
44000600	SIDEWALK REMOVAL	SQ FT	6822	6822			

* SPECIALTY ITEMS

MODEL: S00_1
FILE: M:\GIS\Engineering\LiveProjects\1003 DOT DUB, HORNW 8 - 62N66\CADD\CADD Sheets\CIVIL\62N66-HK-S00.dgn



USER NAME = jdavis	DESIGNED - MA	REVISED -
	DRAWN - MA	REVISED -
PLOT SCALE = 100.0000' / in.	CHECKED - JJD	REVISED -
PLOT DATE = 6/10/2022	DATE - 06/10/2022	REVISED -

**STATE OF ILLINOIS
DEPARTMENT OF TRANSPORTATION**

**SUMMARY OF QUANTITIES
IL RTE 83 (LAKE ST) SMART OVERLAY**

SCALE: SHEET 1 OF 4 SHEETS STA. TO STA.

F.A.P. RTE. 344	SECTION 2021-043-R5	COUNTY LAKE	TOTAL SHEETS 44	SHEET NO. 3
ILLINOIS FED. AID PROJECT NHPP-MJIN(092)			CONTRACT NO. 62N66	

1 REVISOR SHEET 7/14/2022

CODE NO.	ITEM	UNIT	TOTAL QUANTITY	CONSTRUCTION CODE		
				80% FED 20% STATE	80% FED 20% STATE	100% STATE
				ROADWAY 0005	SAFETY 0021	ROADWAY 0005
				URBAN	URBAN	URBAN
44003100	MEDIAN REMOVAL	SQ FT	2795	2795		
44201690	CLASS D PATCHES, TYPE I, 4 INCH	SQ YD	39	39		
44201692	CLASS D PATCHES, TYPE II, 4 INCH	SQ YD	24	24		
44201815	CLASS D PATCHES, TYPE II, 14 INCH	SQ YD	250	250		
44201819	CLASS D PATCHES, TYPE III, 14 INCH	SQ YD	16	16		
44201821	CLASS D PATCHES, TYPE IV, 14 INCH	SQ YD	136	136		
60250200	CATCH BASINS TO BE ADJUSTED	EACH	6	6		
60252800	CATCH BASINS TO BE RECONSTRUCTED	EACH	3	3		
60260100	INLETS TO BE ADJUSTED	EACH	3	3		
60266600	VALVE BOXES TO BE ADJUSTED	EACH	1	1		
60300105	FRAMES AND GRATES TO BE ADJUSTED	EACH	15	15		
60300305	FRAMES AND LIDS TO BE ADJUSTED	EACH	6	6		
60404950	FRAMES AND GRATES, TYPE 24	EACH	6	6		
60406100	FRAMES AND LIDS, TYPE 1, CLOSED LID	EACH	6	6		

* SPECIALTY ITEMS

CODE NO.	ITEM	UNIT	TOTAL QUANTITY	CONSTRUCTION CODE		
				80% FED 20% STATE	80% FED 20% STATE	100% STATE
				ROADWAY 0005	SAFETY 0021	ROADWAY 0005
				URBAN	URBAN	URBAN
60603800	COMBINATION CONCRETE CURB AND GUTTER, TYPE B-6.12	FOOT	154	154		
60618300	CONCRETE MEDIAN SURFACE, 4 INCH	SQ FT	120	120		
*66900200	NON-SPECIAL WASTE DISPOSAL	CU YD	295 135	295 135		1
*66900530	SOIL DISPOSAL ANALYSIS	EACH	4	4		
*66901001	REGULATED SUBSTANCES PRE-CONSTRUCTION PLAN	L SUM	1	1		
*66901003	REGULATED SUBSTANCES FINAL CONSTRUCTION REPORT	L SUM	1	1		
*66901006	REGULATED SUBSTANCES MONITORING	CAL DA	15	15		
67100100	MOBILIZATION	L SUM	1	1		
70102620	TRAFFIC CONTROL AND PROTECTION, STANDARD 701501	L SUM	1	1		
70102625	TRAFFIC CONTROL AND PROTECTION, STANDARD 701606	L SUM	1	1		
70102630	TRAFFIC CONTROL AND PROTECTION, STANDARD 701601	L SUM	1	1		
70102632	TRAFFIC CONTROL AND PROTECTION, STANDARD 701602	L SUM	1	1		
70102635	TRAFFIC CONTROL AND PROTECTION, STANDARD 701701	L SUM	1	1		
70102640	TRAFFIC CONTROL AND PROTECTION, STANDARD 701801	L SUM	1	1		

* SPECIALTY ITEMS

MODEL: S00 2
FILE NAME: G:\Engineering\LiveProjects\1003 DOT DUB, HDRW08 - 62N66\CADD\CADD Sheets\CIVIL\62N66-INT-S00.dgn



USER NAME = jdavis	DESIGNED - MA	REVISED -
	DRAWN - MA	REVISED -
PLOT SCALE = 100.0000' / in.	CHECKED - JJD	REVISED -
PLOT DATE = 6/10/2022	DATE - 06/10/2022	REVISED -

**STATE OF ILLINOIS
DEPARTMENT OF TRANSPORTATION**

**SUMMARY OF QUANTITIES
IL RTE 83 (LAKE ST) SMART OVERLAY**

SCALE: SHEET 2 OF 4 SHEETS STA. TO STA.

F.A.P. RTE. 344	SECTION 2021-043-R5	COUNTY LAKE	TOTAL SHEETS 44	SHEET NO. 4
CONTRACT NO. 62N66				
ILLINOIS FED. AID PROJECT NHPP-MJN(082)				

1 REVISD SHEET 7/14/2022

MODEL: S00 3
FILE: M:\GIS\Engineering\LiveProjects\1003 DOT DUB HORVAD 8 - 62N66\CADD\CADD Sheets\CIVIL\62N66-SH-S00.dgn

CODE NO.	ITEM	UNIT	TOTAL QUANTITY	CONSTRUCTION CODE			
				80% FED 20% STATE	80% FED 20% STATE	100% STATE	
				ROADWAY	SAFETY	ROADWAY	
				0005	0021	0005	
				URBAN	URBAN	URBAN	
70300100	SHORT TERM PAVEMENT MARKING	FOOT	9143 8735	9143 8735			
70300150	SHORT TERM PAVEMENT MARKING REMOVAL	SQ FT	3048 2912	3048 2912			
70300211	TEMPORARY PAVEMENT MARKING LETTERS AND SYMBOLS - PAINT	SQ FT	625	625			
70300221	TEMPORARY PAVEMENT MARKING - LINE 4" - PAINT	FOOT	10920	10920			
70300241	TEMPORARY PAVEMENT MARKING - LINE 6" - PAINT	FOOT	2609	2609			
70300261	TEMPORARY PAVEMENT MARKING - LINE 12" - PAINT	FOOT	1914 1217	1914 1217			
70300281	TEMPORARY PAVEMENT MARKING - LINE 24" - PAINT	FOOT	428 360	428 360			
70306120	TEMPORARY PAVEMENT MARKING - LINE 4" - TYPE III TAPE	FOOT	4368	4368			
*78000100	THERMOPLASTIC PAVEMENT MARKING - LETTERS AND SYMBOLS	SQ FT	625	625			
*78000200	THERMOPLASTIC PAVEMENT MARKING - LINE 4"	FOOT	10920	10920			
*78000400	THERMOPLASTIC PAVEMENT MARKING - LINE 6"	FOOT	2609	2609			
*78000600	THERMOPLASTIC PAVEMENT MARKING - LINE 12"	FOOT	1217	1217			
*78000650	THERMOPLASTIC PAVEMENT MARKING - LINE 24"	FOOT	360	360			
*78009012	MODIFIED URETHANE PAVEMENT MARKING - LINE 12"	FOOT	697 485	697 485			
*78009024	MODIFIED URETHANE PAVEMENT MARKING - LINE 24"	FOOT	68	68			
* SPECIALTY ITEMS							

CODE NO.	ITEM	UNIT	TOTAL QUANTITY	CONSTRUCTION CODE			
				80% FED 20% STATE	80% FED 20% STATE	100% STATE	
				ROADWAY	SAFETY	ROADWAY	
				0005	0021	0005	
				URBAN	URBAN	URBAN	
*78100100	RAISED REFLECTIVE PAVEMENT MARKER	EACH	324	324			
78300200	RAISED REFLECTIVE PAVEMENT MARKER REMOVAL	EACH	300	300			
78300202	PAVEMENT MARKING REMOVAL - WATER BLASTING	SQ FT	8340 6951	8340 6951			
*81028200	UNDERGROUND CONDUIT, GALVANIZED STEEL, 2" DIA.	FOOT	238		238		
*81400100	HANDHOLE	EACH	1		1		
*85000200	MAINTENANCE OF EXISTING TRAFFIC SIGNAL INSTALLATION	EACH	2		2		
*87301215	ELECTRIC CABLE IN CONDUIT, SIGNAL NO. 14 2C	FOOT	2799		2799		
*87301900	ELECTRIC CABLE IN CONDUIT, EQUIPMENT GROUNDING CONDUCTOR, NO. 6 1C	FOOT	298		298		
*87900200	DRILL EXISTING HANDHOLE	EACH	13		13		
*88600100	DETECTOR LOOP, TYPE I	FOOT	1310		1310		
*89502200	MODIFY EXISTING CONTROLLER	EACH	2		2		
*89502375	REMOVE EXISTING TRAFFIC SIGNAL EQUIPMENT	EACH	2		2		
X0320050	CONSTRUCTION LAYOUT (SPECIAL)	L SUM	1	1			
X0325225	BRICK PAVEMENT REMOVAL AND REPLACEMENT	SQ FT	2293	2293			
* SPECIALTY ITEMS							



USER NAME = jdavis	DESIGNED - MA	REVISED -
PLOT SCALE = 100.0000' / in.	DRAWN - MA	REVISED -
PLOT DATE = 6/10/2022	CHECKED - JJD	REVISED -
	DATE - 06/10/2022	REVISED -

STATE OF ILLINOIS
DEPARTMENT OF TRANSPORTATION

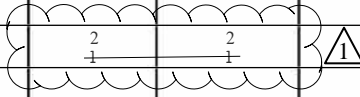
SUMMARY OF QUANTITIES	
IL RTE 83 (LAKE ST) SMART OVERLAY	
SCALE:	SHEET 3 OF 4 SHEETS STA. TO STA.

F.A.P. RTE.	SECTION	COUNTY	TOTAL SHEETS	SHEET NO.
344	2021-043-R5	LAKE	44	5
CONTRACT NO. 62N66				
ILLINOIS FED. AID PROJECT NHPP-MJLN(092)				

REVISOR SHEET 7/14/2022

MODEL: S004
FILE NAME: G:\Engineering\LiveProjects\1003 IDOT DUB, HDR\WD 8 - 62N66\CADD\CADD Sheets\CIVIL\162N66-INT-S00.dgn

CODE NO.	ITEM	UNIT	TOTAL QUANTITY	CONSTRUCTION CODE		
				80% FED 20% STATE	80% FED 20% STATE	100% STATE
				ROADWAY 0005	SAFETY 0021	ROADWAY 0005
				URBAN	URBAN	URBAN
X0326806	WASHOUT BASIN	L SUM	1	1		
X0327989	REMOVE EXISTING BRICK PAVERS	SQ FT	692	692		
*X1400378	PEDESTRIAN SIGNAL POST, 5 FT.	EACH	15		15	
*X1400450	REBUILD EXISTING HEAVY-DUTY HANDHOLE	EACH	2	2		
X4400501	COMBINATION CURB AND GUTTER REMOVAL AND REPLACEMENT LESS THAN OR EQUAL TO 10 FEET	FOOT	318	318		
X4402020	CONCRETE MEDIAN SURFACE REMOVAL	SQ FT	415	415		
X5537800	STORM SEWERS TO BE CLEANED 12"	FOOT	200			200
X6030310	FRAMES AND LIDS TO BE ADJUSTED (SPECIAL)	EACH	19	19		
X6700407	ENGINEER'S FIELD OFFICE, TYPE A (D1)	CAL MO	12	12		
*X8760200	ACCESSIBLE PEDESTRIAN SIGNALS	EACH	18		18	
*X8780012	CONCRETE FOUNDATION, TYPE A 12-INCH DIAMETER	FOOT	60		60	
Z0004562	COMBINATION CURB AND GUTTER REMOVAL AND REPLACEMENT	FOOT	912	912		
Z0018500	DRAINAGE STRUCTURES TO BE CLEANED	EACH	22			22
Z0030850	TEMPORARY INFORMATION SIGNING	SQ FT	257	257		
*Z0033044	RE-OPTIMIZE TRAFFIC SIGNAL SYSTEM LEVEL 1	EACH	2		2	



CODE NO.	ITEM	UNIT	TOTAL QUANTITY	CONSTRUCTION CODE		
				80% FED 20% STATE	80% FED 20% STATE	100% STATE
				ROADWAY 0005	SAFETY 0021	ROADWAY 0005
				URBAN	URBAN	URBAN
Ø Z0076600	TRAINEES	HOURS	500	500		
Ø Z0076604	TRAINEES - TRAINING PROGRAM GRADUATE	HOURS	500	500		

* SPECIALTY ITEMS

△ REVISED SHEET 7/14/2022
Ø 0042



USER NAME = jdavis	DESIGNED - MA	REVISED -
	DRAWN - MA	REVISED -
PLOT SCALE = 100.0000' / in.	CHECKED - JJD	REVISED -
PLOT DATE = 6/10/2022	DATE - 06/10/2022	REVISED -

STATE OF ILLINOIS
DEPARTMENT OF TRANSPORTATION

SUMMARY OF QUANTITIES
IL RTE 83 (LAKE ST) SMART OVERLAY

SCALE: SHEET 4 OF 4 SHEETS STA. TO STA.

F.A.P. RTE.	SECTION	COUNTY	TOTAL SHEETS	SHEET NO.
344	2021-043-RS	LAKE	44	6
CONTRACT NO. 62N66			ILLINOIS FED. AID PROJECT NHPP-MLJN(092)	

INTERSECTION	20200100 EARTH EXCAVATION CU YD	21101615 TOPSOIL F&P 4 SQ YD	25200110 SODDING SALT TOLERANT SQ YD	25200200 SUP. WATERING UNIT	42001300 PROTECTIVE COAT SQ YD	42400200 PC CONC SIDEWALK 5" SQ FT	42400800 DETECTABLE WARNINGS SQ FT	44000600 SIDEWALK REM SQ FT	44201690 CL D PATCH T1 4 SQ YD	44201692 CL D PATCH T2 4 SQ YD	60260100 INLET TO BE ADJ. EACH	60266600 VALVE BOXES TO BE ADJ. EACH	60618300 CONCRETE MEDIAN SURFACE, 4" SQ FT
IL-83 & BUFFALO GROVE RD	25	120	120	0.4	438	2187	113	1940	8	13.0	3	1	120
IL-83 & CHERBOURG DR	18	95	95	0.3	193	1288	80	1129	6	11	0	0	0
IL-83 & TOWNLINE PKWY/ PAULINE AVE	16	56	56	0.2	184	1299	105	1220	17	0	0	0	0
IL-83 & OLD CHECKER RD	11	32	32	0.1	129	966	52	914	8	0	0	0	0
TOTAL	70	303	303	1	944	5740	350	5203	39	24	3	1	120

INTERSECTION	X1400450 REBUILD EXISTING HEAVY-DUTY HANDHOLE EACH	X4402020 CONCRETE MEDIAN SURFACE REMOVAL SQ FT	Z0004562 COMB C&G REMOV REPL FOOT
IL-83 & BUFFALO GROVE RD	1	415	380
IL-83 & CHERBOURG DR	0	0	146
IL-83 & TOWNLINE PKWY/ PAULINE AVE	0	0	154
IL-83 & OLD CHECKER RD	0	0	72
TOTAL	1	415	752

MODEL: Schedule 1
 FILE: \Admin\GIS\Engineering\Live\Projects\31003_IDOT_DUB_HDR\WID 8 - 62N66\CADD\CADD_Sheets\CUMD\CADD_Sheets\62n66-act-schedule.dgn



USER NAME = jdavis	DESIGNED - MA	REVISED -
	DRAWN - MA	REVISED -
PLOT SCALE = 100.0000' / in.	CHECKED - JJD	REVISED -
PLOT DATE = 6/24/2022	DATE - 06/10/2022	REVISED -

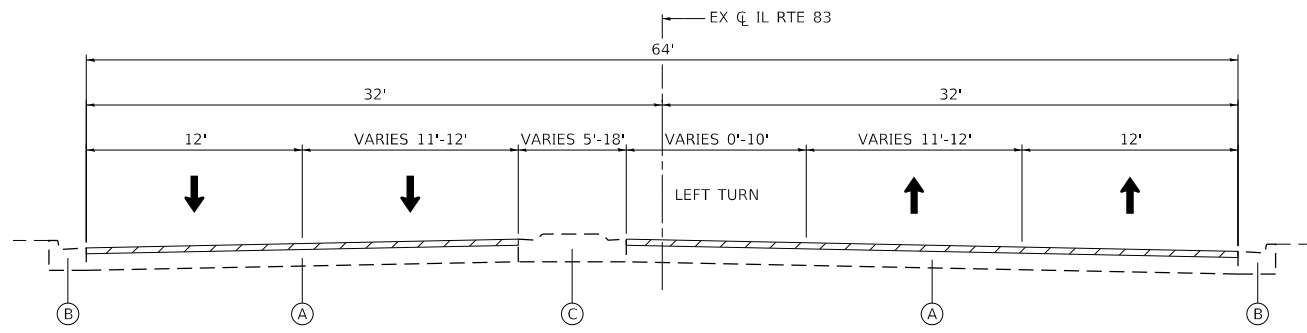
STATE OF ILLINOIS
DEPARTMENT OF TRANSPORTATION

ADA CURB RAMP SCHEDULE OF QUANTITIES
IL RTE 83 (LAKE ST) SMART OVERLAY

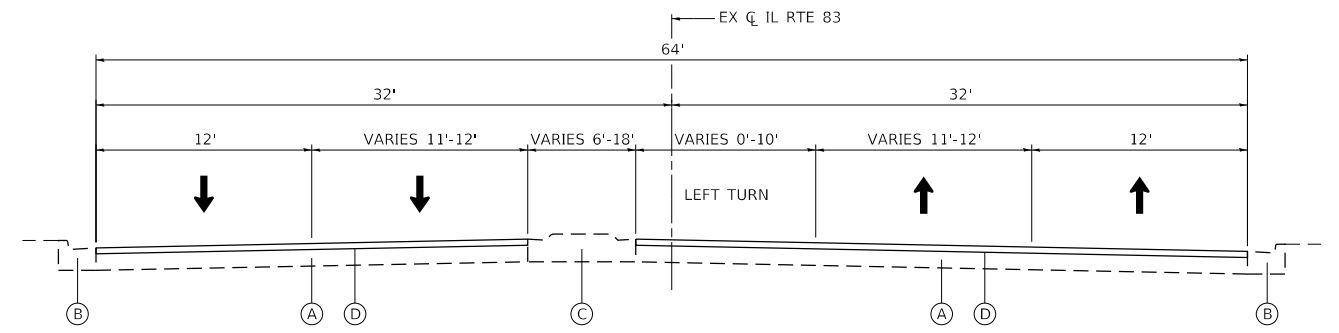
SCALE: SHEET OF SHEETS STA. TO STA.

REVISED SHEET 7/14/2022

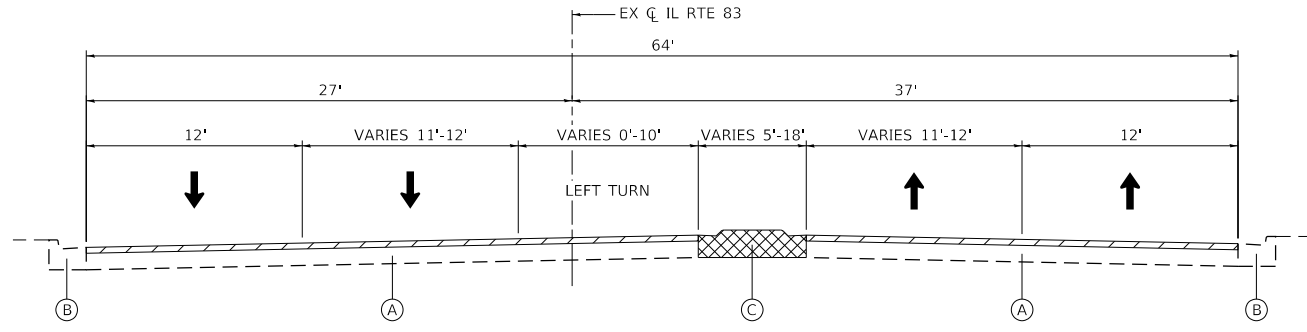
F.A.P. RTE.	SECTION	COUNTY	TOTAL SHEETS	SHEET NO.
344	2021-043-R5	LAKE	44	7
CONTRACT NO. 62N66			ILLINOIS FED. AID PROJECT NHPP-MLJN(082)	



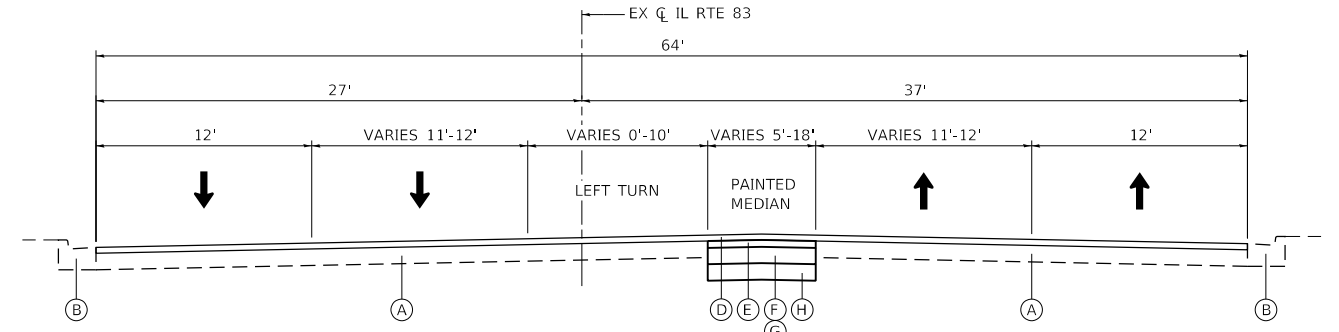
EXISTING TYPICAL SECTION
FROM STA 9+68 TO STA 13+86



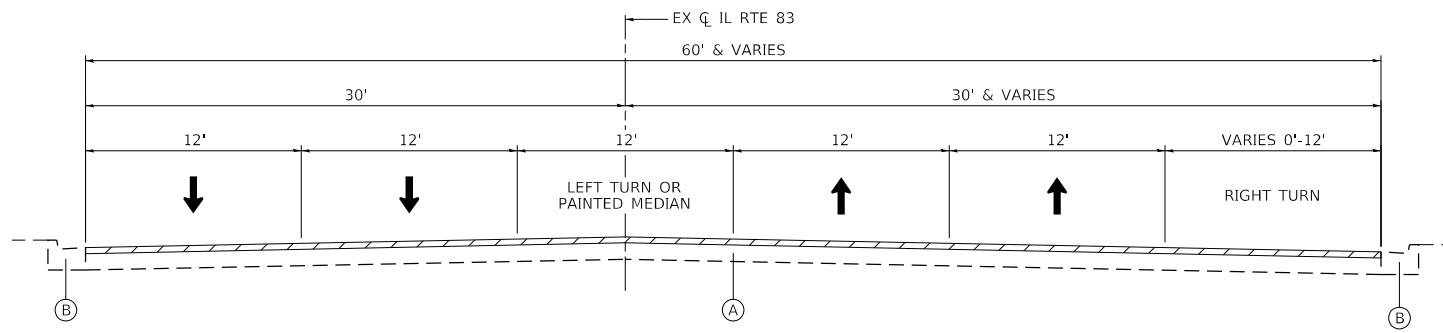
PROPOSED TYPICAL SECTION
FROM STA 9+68 TO STA 13+86



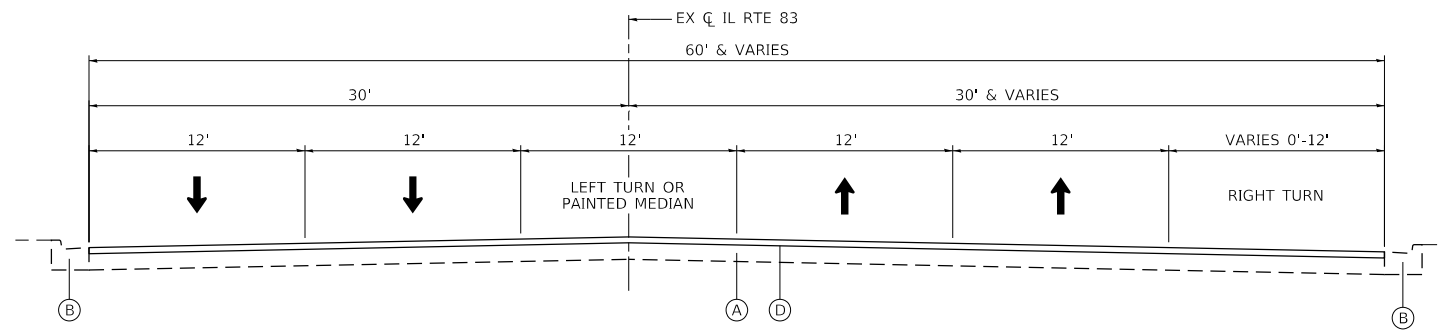
EXISTING TYPICAL SECTION
FROM STA 13+86 TO STA 17+90



PROPOSED TYPICAL SECTION
FROM STA 13+86 TO STA 17+90



EXISTING TYPICAL SECTION
FROM STA 17+90 TO STA 42+59



PROPOSED TYPICAL SECTION
FROM STA 17+90 TO STA 42+59

HMA MIXTURE REQUIREMENTS CHART

LEGEND

- HOT-MIX ASPHALT SURFACE REMOVAL, 1 1/2"
- MEDIAN REMOVAL AND COMBINATION CURB AND MEDIAN AND GUTTER REMOVAL
- EXISTING HOT-MIX ASPHALT PAVEMENT, 1 1/2"
- EXISTING CONCRETE CURB AND GUTTER
- EXISTING STABILIZED MEDIAN
- PROPOSED HOT-MIX ASPHALT SURFACE COURSE, MIX "D", IL-9.5, N70, 1 1/2"
- PROPOSED HOT-MIX ASPHALT BINDER COURSE, IL-19.0, N70, 2 1/4"
- PROPOSED HOT-MIX ASPHALT BASE COURSE, 12"
- PROPOSED HOT-MIX ASPHALT BASE COURSE WIDENING, 12"
- PROPOSED AGGREGATE SUBGRADE IMPROVEMENT, 12"

OPERATION	MIXTURE TYPE	AIR VOIDS (%) @ Ndes	QUALITY MANAGEMENT PROGRAM (QMP)
PAVEMENT RESURFACING	HOT-MIX ASPHALT SURFACE COURSE, MIX "D", IL-9.5, N70, 1 1/2"	4% @ 70 Gyr.	QCP
MEDIAN RECONSTRUCTION	HOT-MIX ASPHALT SURFACE COURSE, MIX "D", IL-9.5, N70, 1 1/2" HOT-MIX ASPHALT BINDER COURSE, IL-19.0, N70, 2 1/4" HOT-MIX ASPHALT BASE COURSE (HMA BINDER IL-19.0), 12" HOT-MIX ASPHALT BASE COURSE WIDENING (HMA BINDER IL-19.0), 12"	4% @ 70 Gyr. 4% @ 70 Gyr. 4% @ 90 Gyr. 4% @ 90 Gyr.	QCP QC/QA QC/QA QC/QA
DRIVEWAY	HOT-MIX ASPHALT SURFACE COURSE, IL-9.5, MIX "D", N50, 2" HOT-MIX ASPHALT BASE COURSE, 6" (HMA BINDER IL-19.0)	4% @ 50 Gyr. 4% @ 50 Gyr.	QC/QA QC/QA
CLASS D PATCHES	HOT-MIX ASPHALT BINDER, IL-19.0	4% @ 70 Gyr.	QC/QA

QUALITY MANAGEMENT PROGRAM (QMP) DESIGNATION:
QUALITY CONTROL/QUALITY ASSURANCE (QC/QA)
QUALITY CONTROL FOR PERFORMANCE (QCP)

NOTES

- THE UNIT WEIGHT USED TO CALCULATE ALL HOT-MIX ASPHALT SURFACE MIXTURES IS 112 LB/SY/IN.
- THE "AC TYPE" FOR POLYMERIZED HMA MIXES SHALL BE "SBS/SBR 76-22", AND FOR NON-POLYMERIZED HMA THE "AC TYPE" SHALL BE "PG 64-22" UNLESS MODIFIED BY RECLAIMED MATERIALS SPECIFICATIONS.
- LONGITUDINAL JOINT SEALANT SHALL BE PLACED OVER THE MILLED SURFACE.
- CONTRACTOR SHALL MILL BEFORE PATCHING.

MODEL: Default
FILE: \\nas010.engr.stateil.us\projects\1003_IDOT_DWB_HDR\WID_B - 62N66\CADD\CADD_Sheets\CUMUL163N66-INT-CYR\Sheet1.dgn



USER NAME = j.davis	DESIGNED - DW	REVISED -
PLOT SCALE = 10.6667' / in.	DRAWN - DW	REVISED -
PLOT DATE = 6/23/2022	CHECKED - JJD	REVISED -
	DATE - 06/10/2022	REVISED -

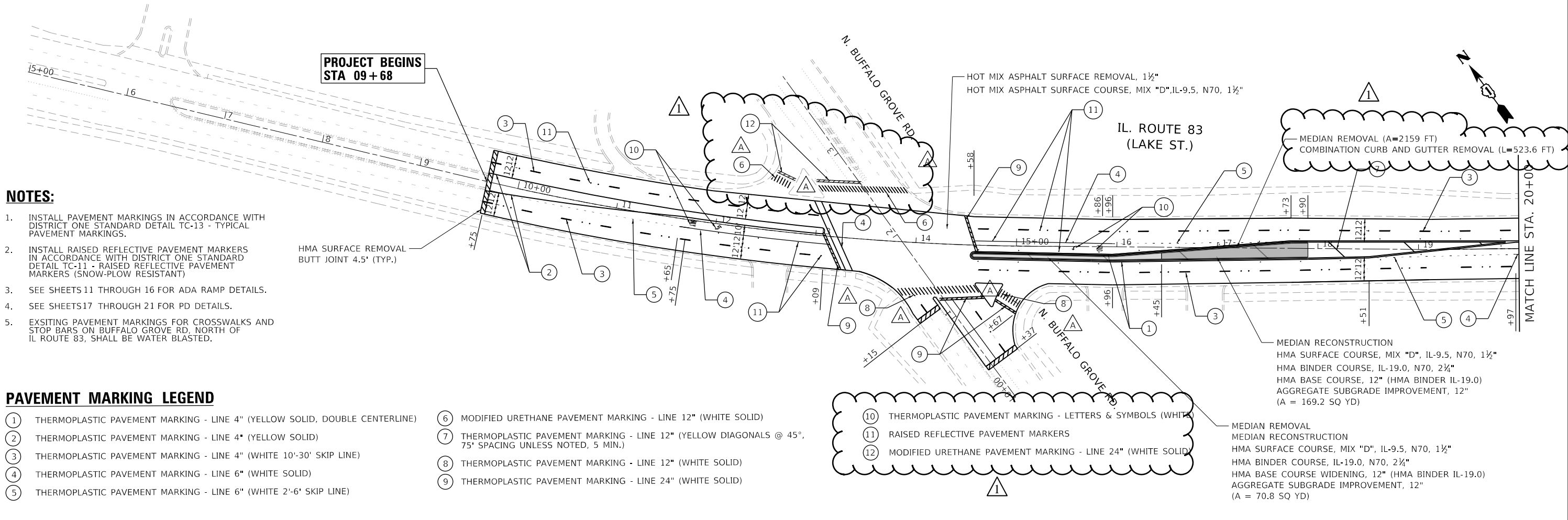
**STATE OF ILLINOIS
DEPARTMENT OF TRANSPORTATION**

**TYPICAL SECTIONS AND DETAILS
IL RTE 83 (LAKE ST) SMART OVERLAY**

SCALE: NONE SHEET 1 OF 1 SHEETS STA. TO STA.

1 REVISED SHEET 7/14/2022

F.A.P. RTE.	SECTION	COUNTY	TOTAL SHEETS	SHEET NO.
344	2021-043-R5	LAKE	44	8
CONTRACT NO. 62N66				
ILLINOIS FED. AID PROJECT NHPP-MLJN(082)				



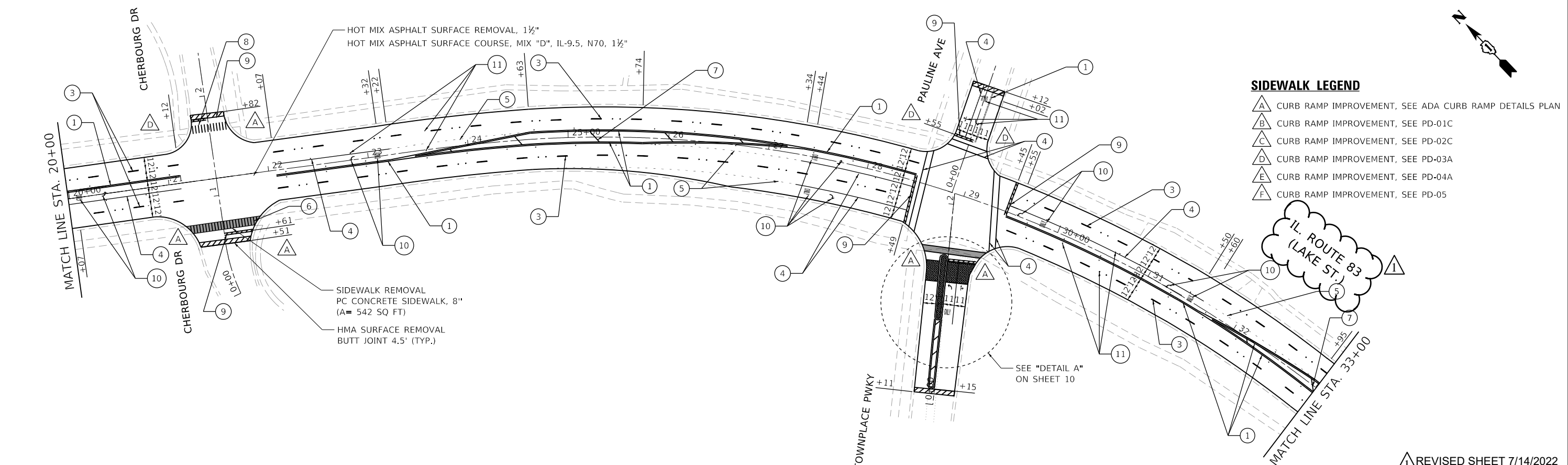
NOTES:

1. INSTALL PAVEMENT MARKINGS IN ACCORDANCE WITH DISTRICT ONE STANDARD DETAIL TC-13 - TYPICAL PAVEMENT MARKINGS.
2. INSTALL RAISED REFLECTIVE PAVEMENT MARKERS IN ACCORDANCE WITH DISTRICT ONE STANDARD DETAIL TC-11 - RAISED REFLECTIVE PAVEMENT MARKERS (SNOW-PLOW RESISTANT)
3. SEE SHEETS 11 THROUGH 16 FOR ADA RAMP DETAILS.
4. SEE SHEETS 17 THROUGH 21 FOR PD DETAILS.
5. EXSITING PAVEMENT MARKINGS FOR CROSSWALKS AND STOP BARS ON BUFFALO GROVE RD, NORTH OF IL ROUTE 83, SHALL BE WATER BLASTED.

PAVEMENT MARKING LEGEND

- | | |
|--|--|
| ① THERMOPLASTIC PAVEMENT MARKING - LINE 4" (YELLOW SOLID, DOUBLE CENTERLINE) | ⑥ MODIFIED URETHANE PAVEMENT MARKING - LINE 12" (WHITE SOLID) |
| ② THERMOPLASTIC PAVEMENT MARKING - LINE 4" (YELLOW SOLID) | ⑦ THERMOPLASTIC PAVEMENT MARKING - LINE 12" (YELLOW DIAGONALS @ 45°, 75" SPACING UNLESS NOTED, 5 MIN.) |
| ③ THERMOPLASTIC PAVEMENT MARKING - LINE 4" (WHITE 10'-30' SKIP LINE) | ⑧ THERMOPLASTIC PAVEMENT MARKING - LINE 12" (WHITE SOLID) |
| ④ THERMOPLASTIC PAVEMENT MARKING - LINE 6" (WHITE SOLID) | ⑨ THERMOPLASTIC PAVEMENT MARKING - LINE 24" (WHITE SOLID) |
| ⑤ THERMOPLASTIC PAVEMENT MARKING - LINE 6" (WHITE 2'-6' SKIP LINE) | |
| | ⑩ THERMOPLASTIC PAVEMENT MARKING - LETTERS & SYMBOLS (WHITE) |
| | ⑪ RAISED REFLECTIVE PAVEMENT MARKERS |
| | ⑫ MODIFIED URETHANE PAVEMENT MARKING - LINE 24" (WHITE SOLID) |

- MEDIAN RECONSTRUCTION**
HMA SURFACE COURSE, MIX "D", IL-9.5, N70, 1 1/2"
HMA BINDER COURSE, IL-19.0, N70, 2 1/4"
HMA BASE COURSE, 12" (HMA BINDER IL-19.0)
AGGREGATE SUBGRADE IMPROVEMENT, 12"
(A = 169.2 SQ YD)
- MEDIAN REMOVAL**
MEDIAN RECONSTRUCTION
HMA SURFACE COURSE, MIX "D", IL-9.5, N70, 1 1/2"
HMA BINDER COURSE, IL-19.0, N70, 2 1/4"
HMA BASE COURSE WIDENING, 12" (HMA BINDER IL-19.0)
AGGREGATE SUBGRADE IMPROVEMENT, 12"
(A = 70.8 SQ YD)



SIDEWALK LEGEND

- △ A CURB RAMP IMPROVEMENT, SEE ADA CURB RAMP DETAILS PLAN
- △ B CURB RAMP IMPROVEMENT, SEE PD-01C
- △ C CURB RAMP IMPROVEMENT, SEE PD-02C
- △ D CURB RAMP IMPROVEMENT, SEE PD-03A
- △ E CURB RAMP IMPROVEMENT, SEE PD-04A
- △ F CURB RAMP IMPROVEMENT, SEE PD-05

MODEL: Default
FILE: \\miller-engineering\live\projects\21003_IDOT_DWA_HDR\W08 - 62N66\CADD\CADD_Sheets\CADD_Sheet\62N66-04-Plan_1.dgn



USER NAME = j.davis	DESIGNED - MA	REVISED -
	DRAWN - MA	REVISED -
PLOT SCALE = 100,0000' / in.	CHECKED - JJD	REVISED -
PLOT DATE = 6/24/2022	DATE - 06/10/2022	REVISED -

**STATE OF ILLINOIS
DEPARTMENT OF TRANSPORTATION**

**RESURFACING AND PAVEMENT MARKING PLAN
IL RTE 83 (LAKE ST) SMART OVERLAY**

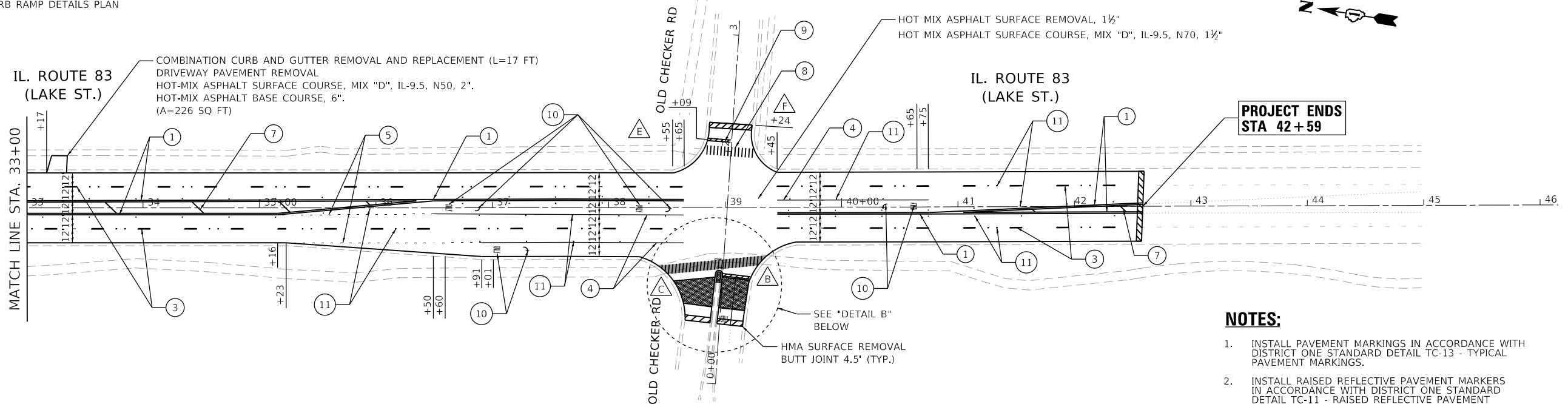
SCALE: 1"=50' SHEET 1 OF 2 SHEETS STA. 9+68 TO STA. 33+00

F.A.P. RTE. 344	SECTION 2021-043-R5	COUNTY LAKE	TOTAL SHEETS 44	SHEET NO. 9
CONTRACT NO. 62N66			ILLINOIS FED. AID PROJECT NHPP-MJN(082)	

1 REVISED SHEET 7/14/2022

SIDEWALK LEGEND

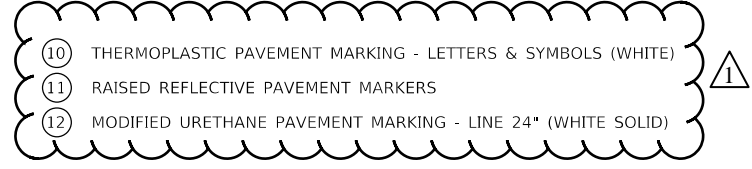
- A** CURB RAMP IMPROVEMENT, SEE ADA CURB RAMP DETAILS PLAN
- B** CURB RAMP IMPROVEMENT, SEE PD-01C
- C** CURB RAMP IMPROVEMENT, SEE PD-02C
- D** CURB RAMP IMPROVEMENT, SEE PD-03A
- E** CURB RAMP IMPROVEMENT, SEE PD-04A
- F** CURB RAMP IMPROVEMENT, SEE PD-05



**PROJECT ENDS
STA 42+59**

PAVEMENT MARKING LEGEND

- 1** THERMOPLASTIC PAVEMENT MARKING - LINE 4" (YELLOW SOLID, DOUBLE CENTERLINE)
- 2** THERMOPLASTIC PAVEMENT MARKING - LINE 4" (YELLOW SOLID)
- 3** THERMOPLASTIC PAVEMENT MARKING - LINE 4" (WHITE 10'-30' SKIP LINE)
- 4** THERMOPLASTIC PAVEMENT MARKING - LINE 6" (WHITE SOLID)
- 5** THERMOPLASTIC PAVEMENT MARKING - LINE 6" (WHITE 2'-6' SKIP LINE)
- 6** MODIFIED URETHANE PAVEMENT MARKING - LINE 12" (WHITE SOLID)
- 7** THERMOPLASTIC PAVEMENT MARKING - LINE 12" (YELLOW DIAGONALS @ 45°, 75' SPACING UNLESS NOTED, 5 MIN.)
- 8** THERMOPLASTIC PAVEMENT MARKING - LINE 12" (WHITE SOLID)
- 9** THERMOPLASTIC PAVEMENT MARKING - LINE 24" (WHITE SOLID)
- 10** THERMOPLASTIC PAVEMENT MARKING - LETTERS & SYMBOLS (WHITE)
- 11** RAISED REFLECTIVE PAVEMENT MARKERS
- 12** MODIFIED URETHANE PAVEMENT MARKING - LINE 24" (WHITE SOLID)

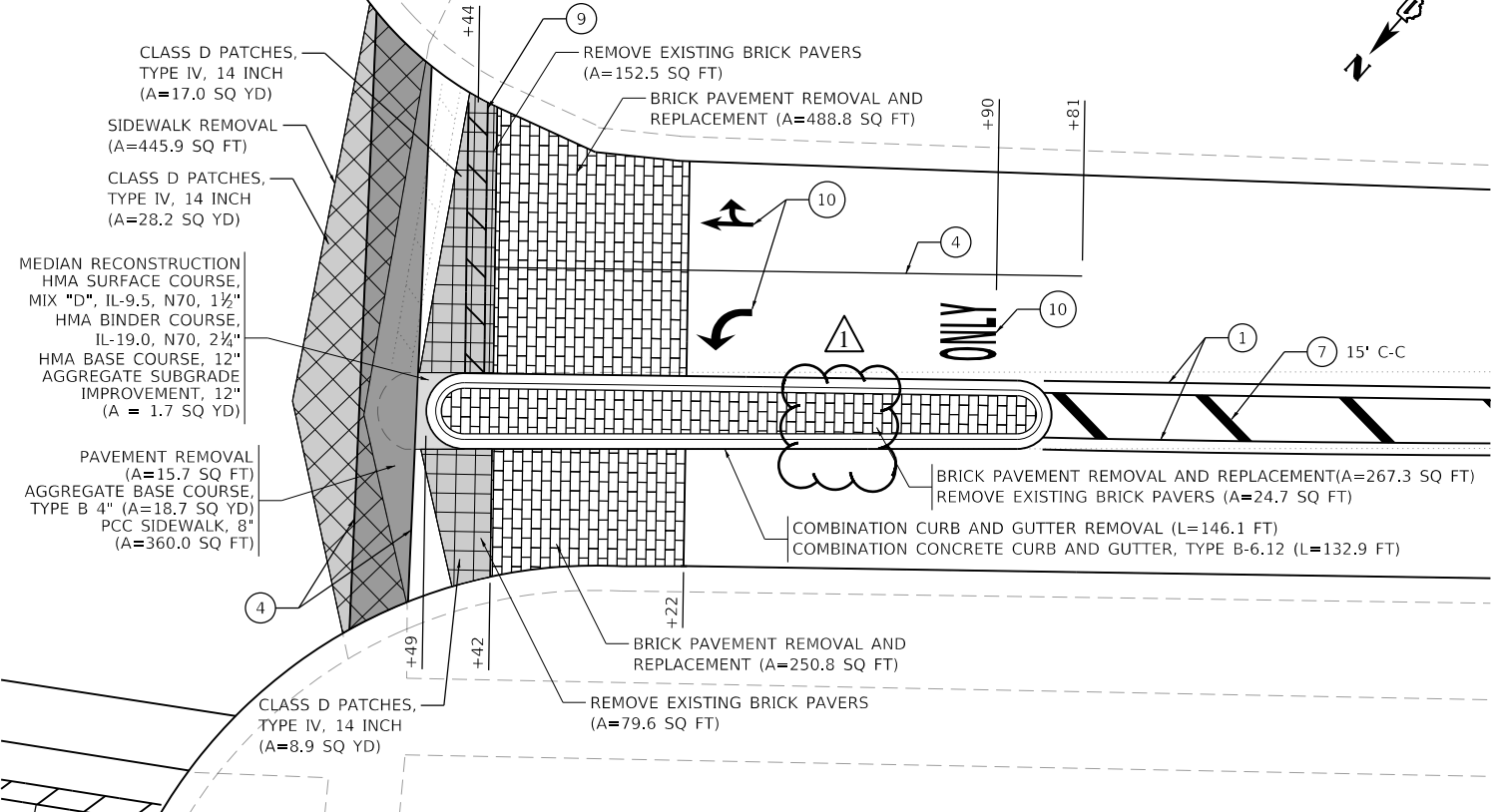


NOTES:

1. INSTALL PAVEMENT MARKINGS IN ACCORDANCE WITH DISTRICT ONE STANDARD DETAIL TC-13 - TYPICAL PAVEMENT MARKINGS.
2. INSTALL RAISED REFLECTIVE PAVEMENT MARKERS IN ACCORDANCE WITH DISTRICT ONE STANDARD DETAIL TC-11 - RAISED REFLECTIVE PAVEMENT MARKERS (SNOW-PLOW RESISTANT)
3. SEE SHEETS 11 THROUGH 16 FOR ADA RAMP DETAILS.
4. SEE SHEETS 17 THROUGH 21 FOR PD DETAILS.

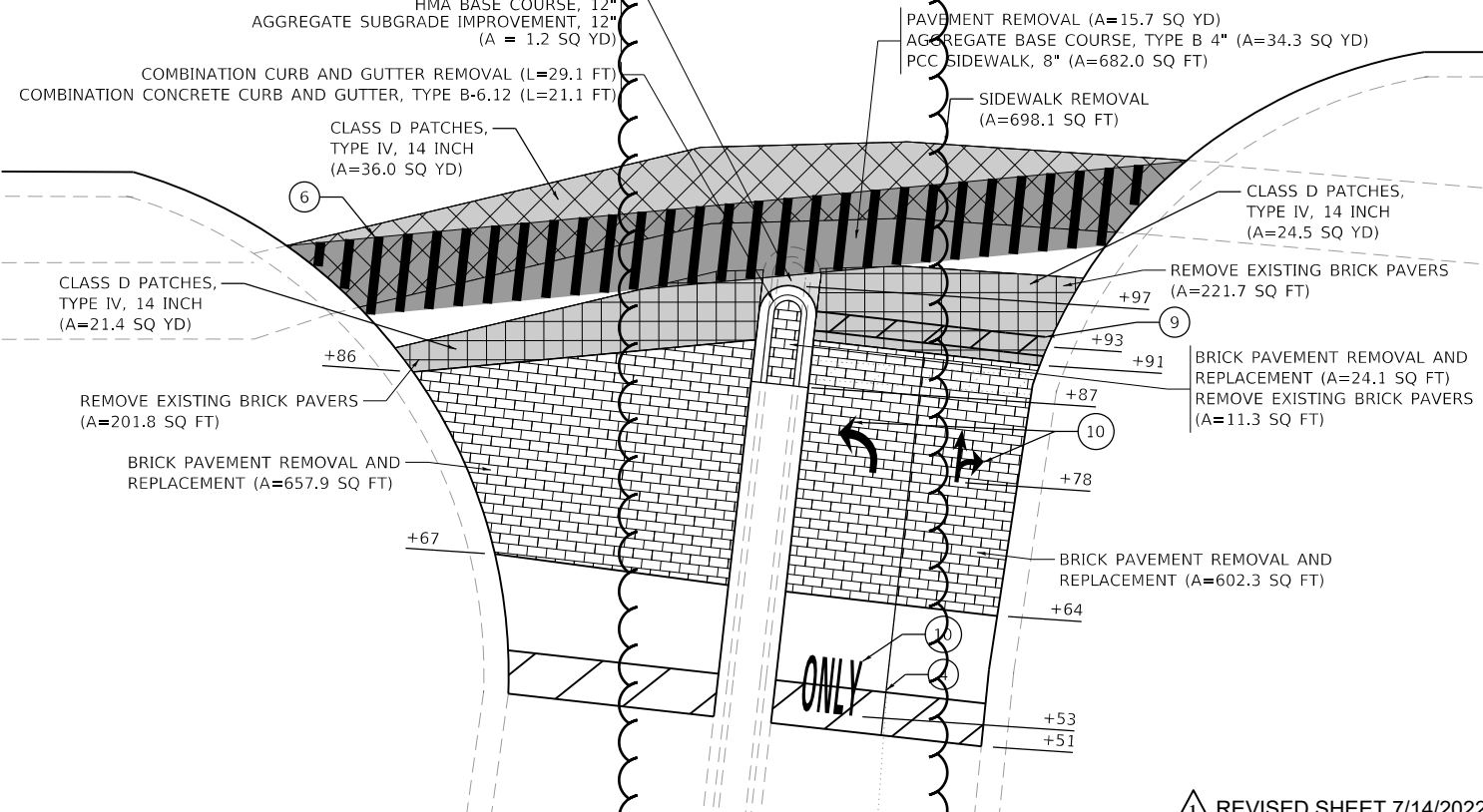
DETAIL A

SCALE: 1"=10'



DETAIL B

SCALE: 1"=10'



MODEL: Default; FILE: Accurate; C:\Engineering\Live\Projects\31003_IDOT_DWB_HDR\W0 - 62N66\CADD\CADD_Sheets\CADD\162N66-ent-Rpt_2.dgn



USER NAME = jDavis	DESIGNED - MA	REVISED -
PLOT SCALE = 100,0000' / in.	DRAWN - MA	REVISED -
PLOT DATE = 6/24/2022	CHECKED - JJD	REVISED -
	DATE - 06/10/2022	REVISED -

**STATE OF ILLINOIS
DEPARTMENT OF TRANSPORTATION**

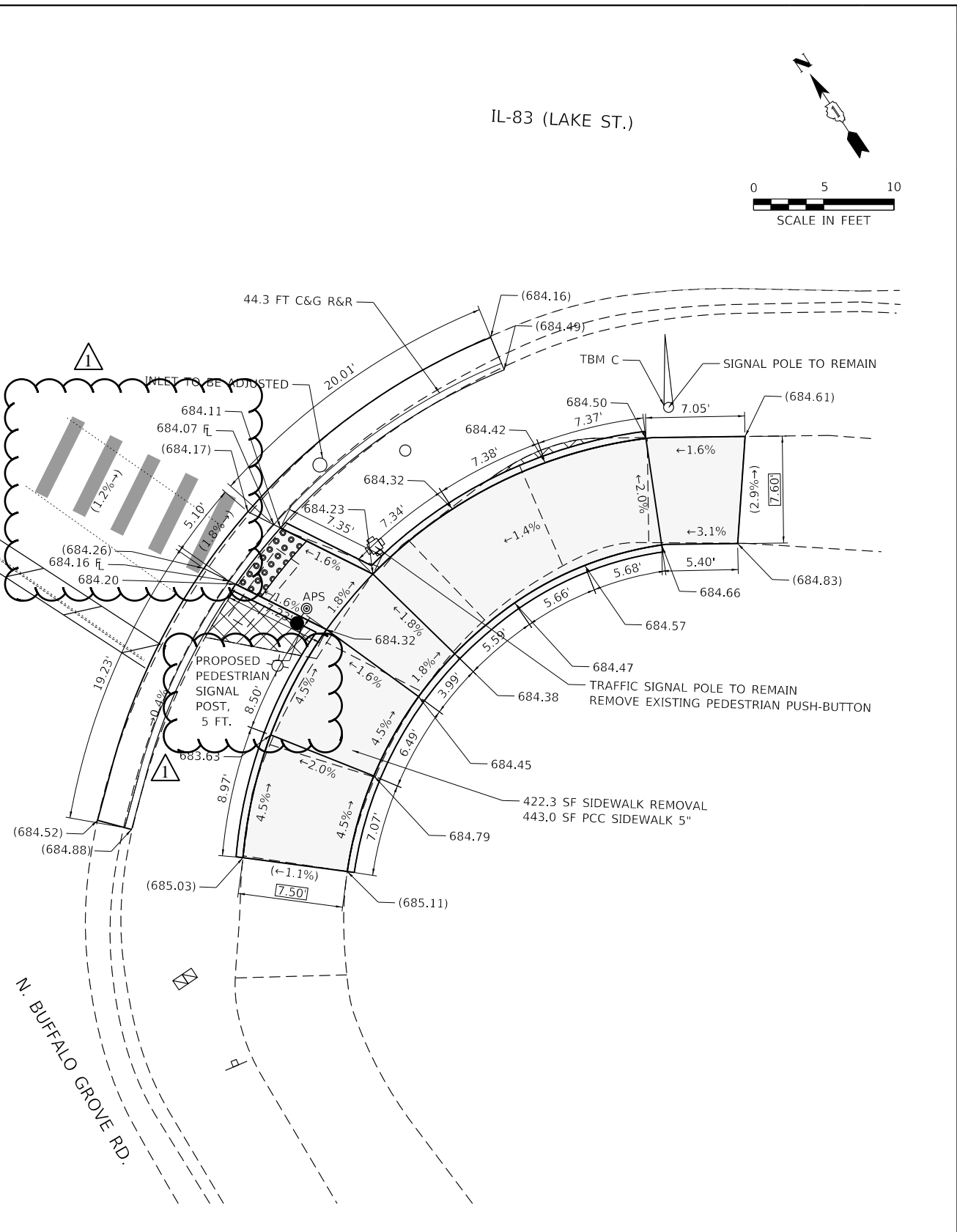
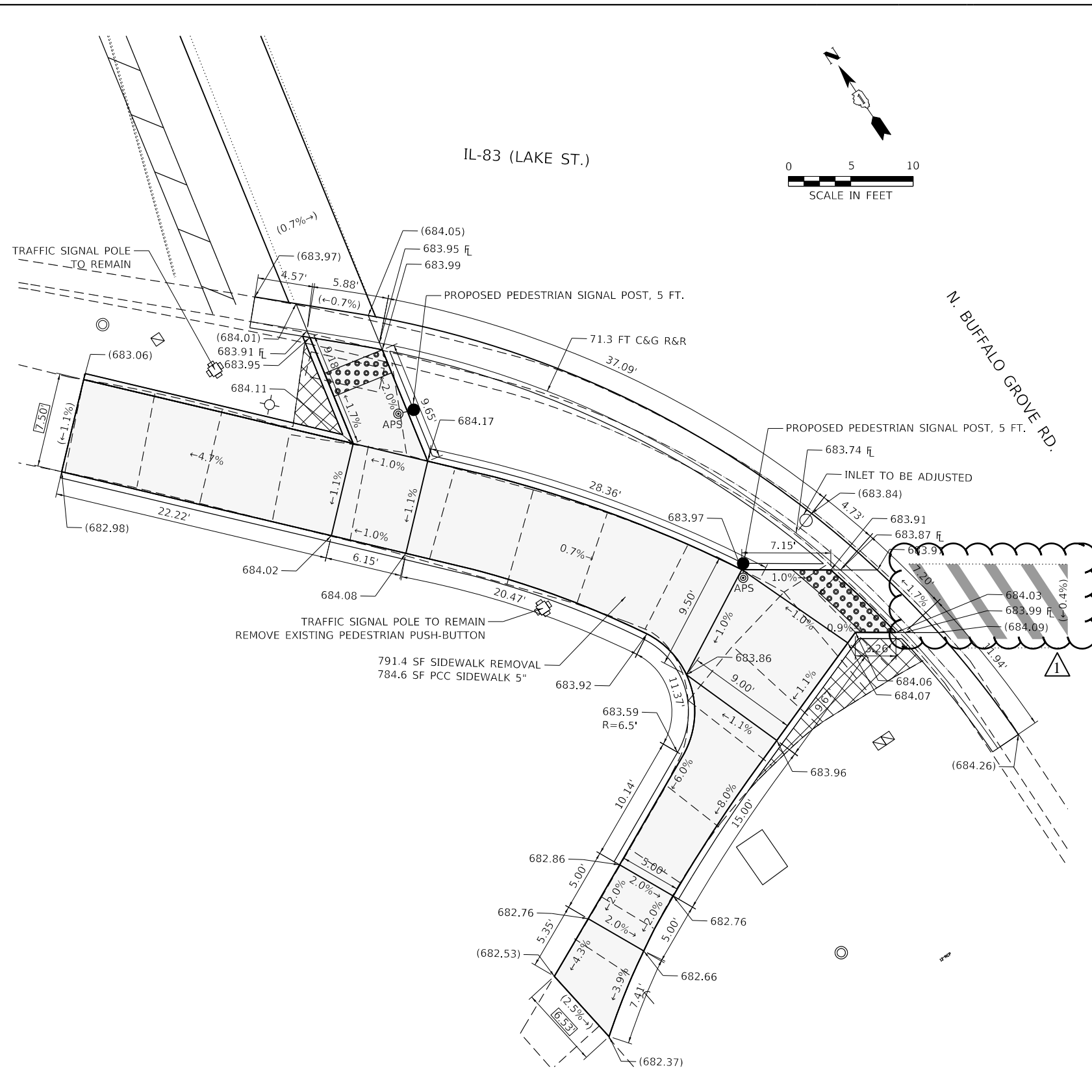
**RESURFACING AND PAVEMENT MARKING PLAN
IL RTE 83 (LAKE ST) SMART OVERLAY**

SCALE: 1"=50' SHEET 2 OF 2 SHEETS STA. 33+00 TO STA. 42+59

F.A.P. RTE. 344	SECTION 2021-043-R5	COUNTY LAKE	TOTAL SHEETS 44	SHEET NO. 10
CONTRACT NO. 62N66				
ILLINOIS FED. AID PROJECT NHPP-MLJN(082)				

REVISD SHEET 7/14/2022

MODEL: Default
 FILE: \\miller-engineering\live\projects\1003_IDOT_DWB_HDR\W08 - 62N66\CADD\CADD_Sheets\CADD\163166-ct-ada-buffalo_grove_rd_south.dgn



TBM 'C'
 TOP OF NW BOLT OF MAST ARM TRAFFIC LIGHT BASE AT SE CORNER OF IL 83 & BUFFALO GROVE RD.
 ELEVATION 685.465'
 NORTHING 2002158.283
 EASTING 1084173.753

LEGEND

XX.X' EXISTING LENGTH

() EXISTING ELEVATION/SLOPE

PROPOSED SIDE CURB

DETECTABLE WARNINGS

PROPOSED SIDEWALK

SIDEWALK REMOVAL, REPLACE WITH TOPSOIL & SOD

TBM 'C'
 TOP OF NW BOLT OF MAST ARM TRAFFIC LIGHT BASE AT SE CORNER OF IL 83 & BUFFALO GROVE RD.
 ELEVATION 685.465'
 NORTHING 2002158.283
 EASTING 1084173.753



USER NAME = j.davis	DESIGNED - JLS	REVISED -
	DRAWN - JLS	REVISED -
PLOT SCALE = 10.0000' / in.	CHECKED - AB	REVISED -
PLOT DATE = 7/11/2022	DATE - 06/10/2022	REVISED -

STATE OF ILLINOIS
 DEPARTMENT OF TRANSPORTATION

ADA CURB RAMP DETAILS-BUFFALO GROVE RD
 IL-83 LAKE STREET SMART OVERLAY AND ADA RAMP IMPROVEMENTS

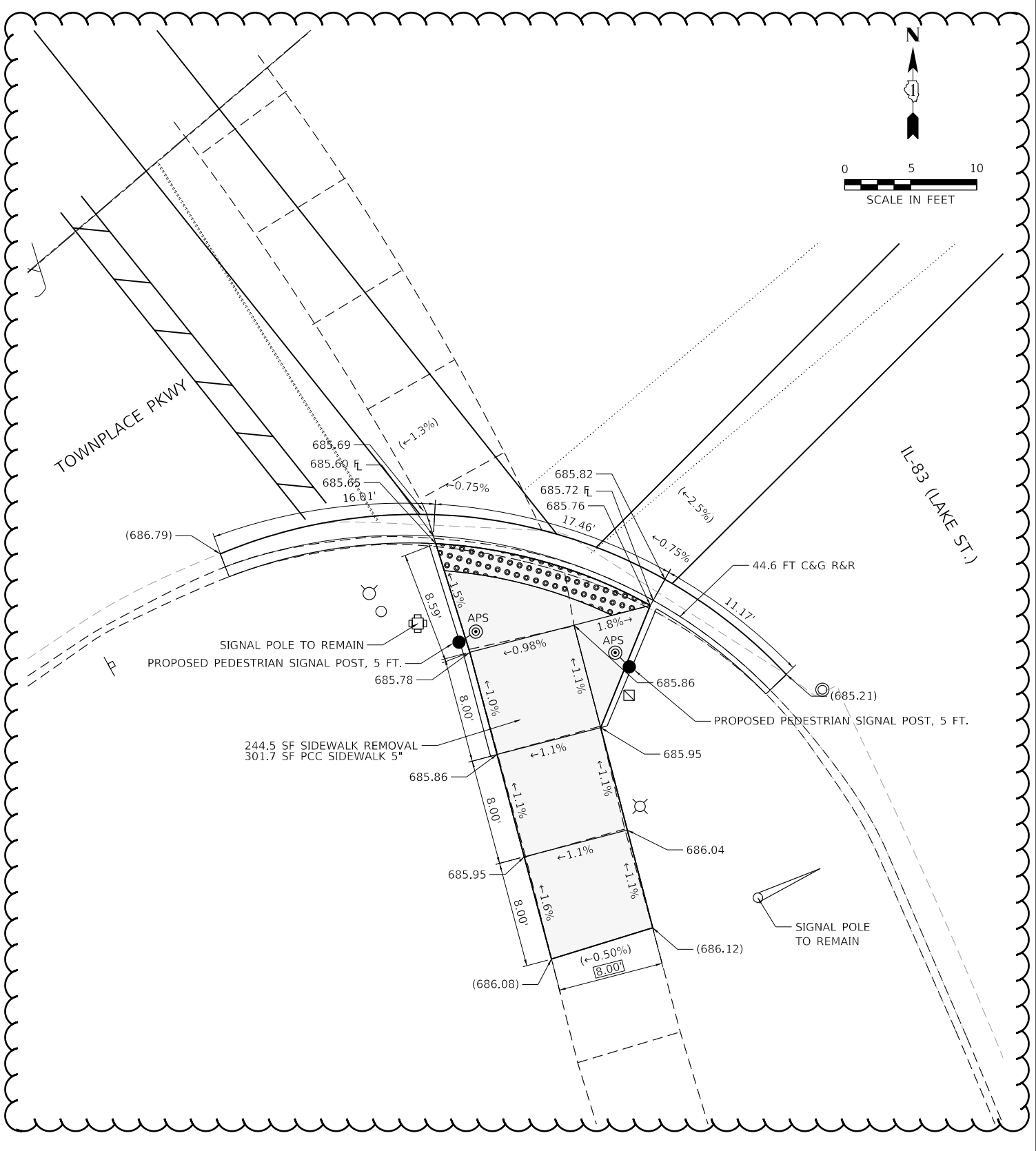
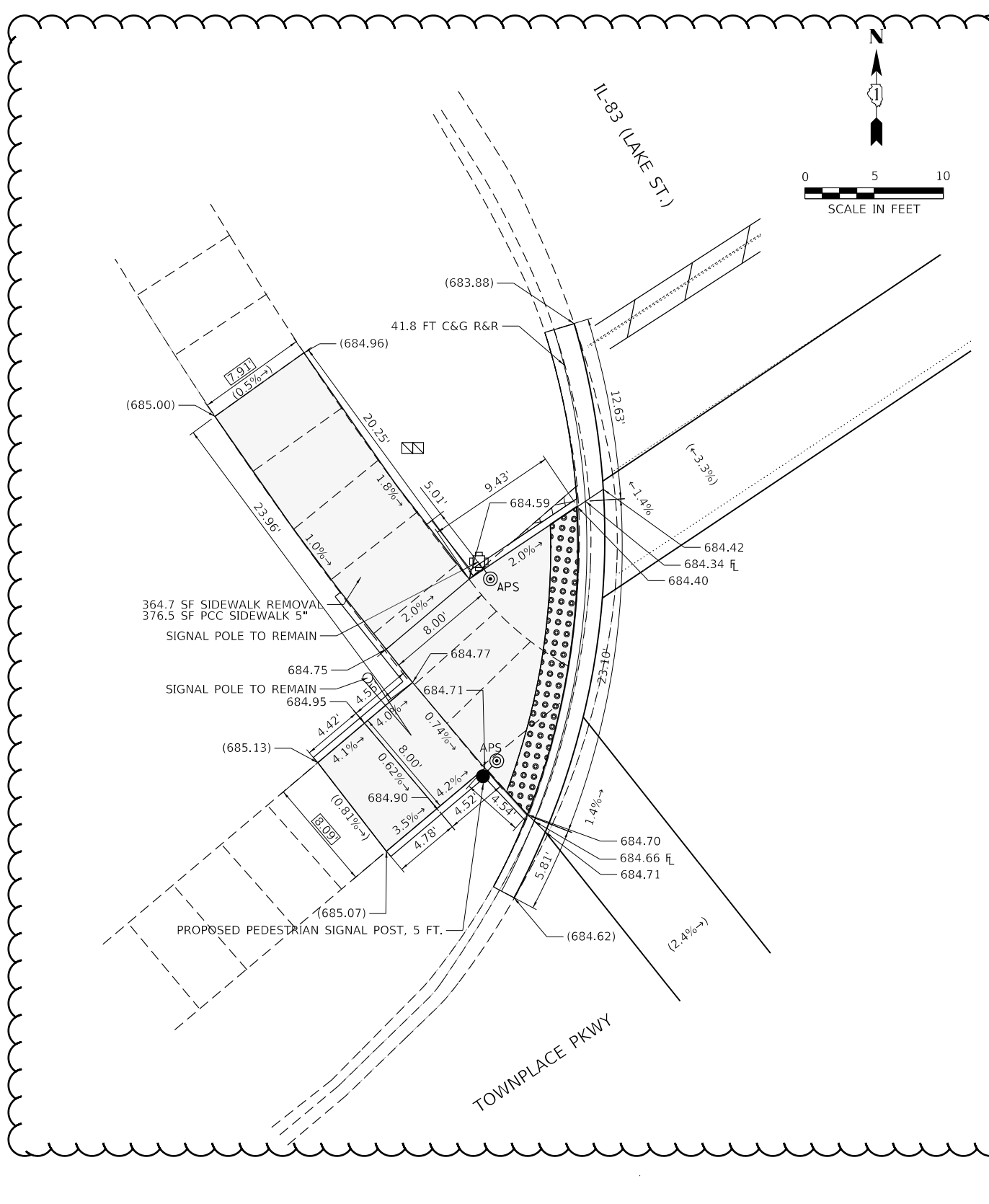
SCALE: 1"=5'

SHEET 2 OF 6 SHEETS STA. TO STA.

F.A.P. RTE. 344	SECTION 2021-043-R5	COUNTY LAKE	TOTAL SHEETS 44	SHEET NO. 12
CONTRACT NO. 62N66				
ILLINOIS FED. AID PROJECT STP-MJN(082)				

REVISED SHEET 7/14/2022

MODEL: Default
 FILE: \\mhc\cgs\Engineering\Live\Projects\31003_IDOT_DWS_HDR\W08 - 62N66\CAD\CADD_Sheets\CADD\CADD_Sheets\CURB\TOWNPLACE PKWY-PAULINE AVE.dgn



TBM 'A'
 SQUARE CUT ON TOP OF SE EDGE OF HANDHOLE AT THE NW CORNER OF IL 83 & PAULINE AVE.
 ELEVATION 687.271'
 NORTHING 2001374.215
 EASTING 1085227.695

LEGEND

XX.X' EXISTING LENGTH	DETECTABLE WARNINGS	SIDEWALK REMOVAL, REPLACE WITH TOPSOIL & SOD
() EXISTING ELEVATION/SLOPE	PROPOSED SIDEWALK	
PROPOSED SIDE CURB		

TBM 'A'
 SQUARE CUT ON TOP OF SE EDGE OF HANDHOLE AT THE NW CORNER OF IL 83 & PAULINE AVE.
 ELEVATION 687.271'
 NORTHING 2001374.215
 EASTING 1085227.695



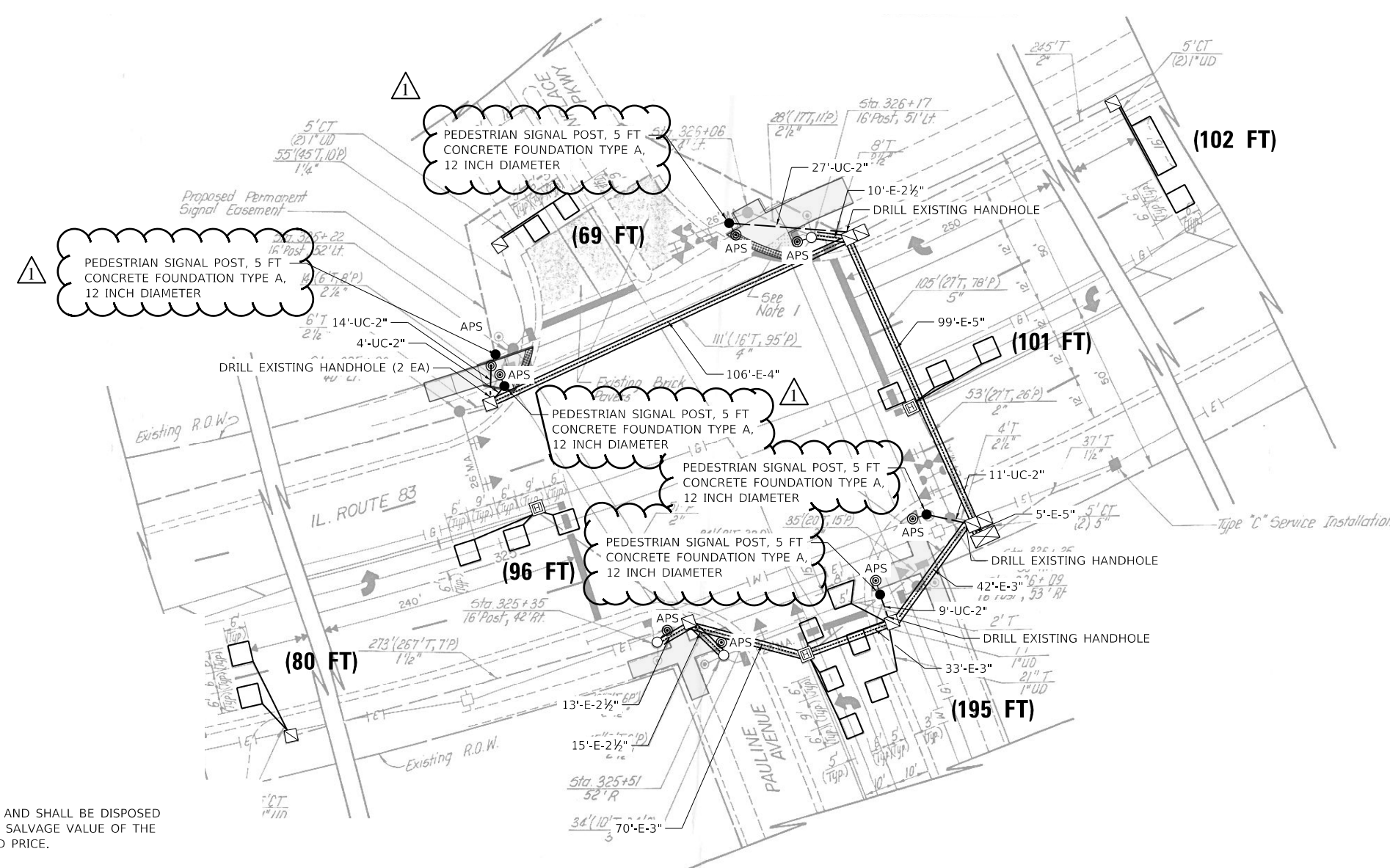
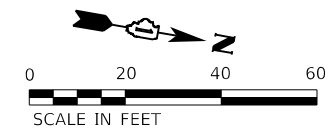
USER NAME = jdavis	DESIGNED - JLS	REVISED -
	DRAWN - JLS	REVISED -
PLOT SCALE = 10.0000' / in.	CHECKED - AB	REVISED -
PLOT DATE = 6/23/2022	DATE - 06/10/2022	REVISED -

STATE OF ILLINOIS
DEPARTMENT OF TRANSPORTATION

ADA CURB RAMP DETAILS-TOWNPLACE PKWY/PAULINE AVE
IL-83 LAKE STREET SMART OVERLAY AND ADA RAMP IMPROVEMENTS
 SCALE: 1"=5' SHEET 6 OF 6 SHEETS STA. TO STA.

F.A.P. RTE. 344	SECTION 2021-043-R5	COUNTY LAKE	TOTAL SHEETS 44	SHEET NO. 16
CONTRACT NO. 62N66				
ILLINOIS FED. AID PROJECT STP-MLJN(082)				

REVISED SHEET 7/14/2022



NOTES

THE FOLLOWING ITEMS SHALL BE REMOVED BY THE CONTRACTOR AND SHALL BE DISPOSED OF BY THEM OUTSIDE THE RIGHT-OF-WAY AT THEIR EXPENSE, THE SALVAGE VALUE OF THE REMOVED EQUIPMENT SHALL BE REFLECTED IN THE CONTRACT BID PRICE.

5 EACH PEDESTRIAN PUSH-BUTTON

ALL EXISTING PEDESTRIAN PUSH-BUTTON SHALL BE REMOVED AND PAID FOR UNDER THE PAY ITEM "REMOVE EXISTING TRAFFIC SIGNAL EQUIPMENT".

WHILE PERFORMING SIGNAL WORK THE CONTRACTOR SHALL MINIMIZE THE TIME THE EXISTING PEDESTRIAN EQUIPMENT IS NOT OPERATIONAL.

LOCATIONS OF PROPOSED TRAFFIC SIGNAL EQUIPMENT ARE APPROXIMATE. THE CONTRACTOR SHALL RECEIVE APPROVAL FROM THE STATE TRAFFIC SIGNAL AREA ENGINEER FOR THE PROPOSED LOCATIONS OF ACCESSIBLE PEDESTRIAN SIGNALS BEFORE COMMENCING INSTALLATION.

ACCESSIBLE PEDESTRIAN SIGNALS SHALL BE MOUNTED PARALLEL TO THE CORRESPONDING CROSSWALK.

THE ALIGNMENT SHOWN ON THIS SHEET IS FROM RECORD DRAWING AND WILL NOT MATCH OTHER PLANS.

THE CONTRACTOR SHALL FIELD VERIFY ALL EXISTING TRAFFIC SIGNAL EQUIPMENT PRIOR TO ORDERING MATERIALS AND STARTING WORK.

REVISION 1 REVISED SHEET 7/14/2022

TS 9885
ECON 151



USER NAME = j.davis	DESIGNED - DW	REVISED -
	DRAWN - DW	REVISED -
PLOT SCALE = 40.0000' / in.	CHECKED - JJD	REVISED -
PLOT DATE = 6/23/2022	DATE - 06/10/2022	REVISED -

STATE OF ILLINOIS
DEPARTMENT OF TRANSPORTATION

APS AND DETECTOR LOOP REPLACEMENT PLAN - PAULINE AVE
IL RTE 83 (LAKE ST) SMART OVERLAY

SCALE: NONE SHEET 3 OF 4 SHEETS STA. TO STA.

F.A.P. RTE.	SECTION	COUNTY	TOTAL SHEETS	SHEET NO.
344	2021-043-R5	LAKE	44	31
CONTRACT NO. 62N66			ILLINOIS FED. AID PROJECT NHPP-MLJN(082)	

MODEL: Default
FILE: \\nas0101\cse\Engineering\Live\Projects\31003_IDOT_DWB_HDR\W0 - 62N66\CADD\CADD_Sheets\CADD\62N66-ent-cs-10.dgn