

DETAIL 1

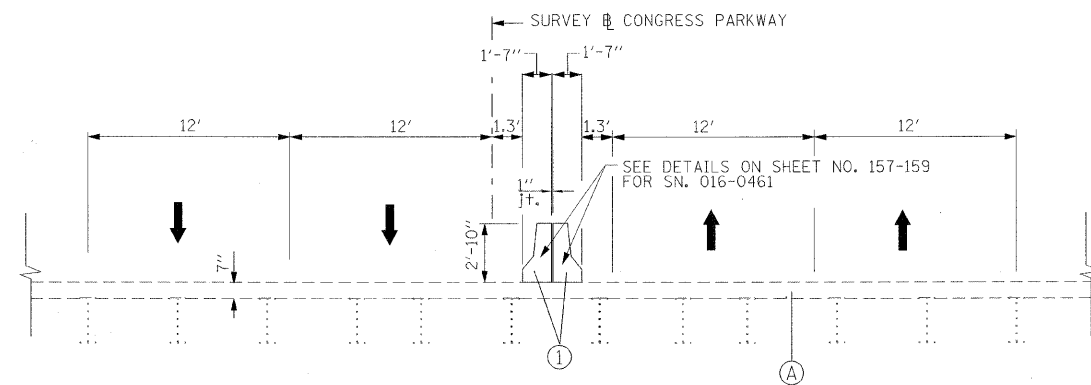
**EXISTING TYPICAL SECTION  
(LOOKING EAST)**

STA. 365+53.07 TO STA. 372+40.61  
CROSS OVER A & E  
(WEST OF THE POST OFFICE STAGE I & II)

**NOTE:**  
FOR REMOVAL DETAILS AND SEQUENCE  
SEE GENERAL NOTES AND TRAFFIC  
CONTROL GENERAL NOTES AND DETAILS

**EXISTING**

- Ⓐ EXISTING CONCRETE DECK
- Ⓑ EXISTING CONCRETE BARRIER REMOVAL
- Ⓒ EXISTING CONCRETE MEDIAN REMOVAL



**PROPOSED TYPICAL SECTION  
(LOOKING EAST)**

STA. 365+53.07 TO STA. 372+40.61  
CROSS OVER A & E  
(WEST OF THE POST OFFICE STAGE I & II)

**PROPOSED**

- ① CONCRETE PARAPET, 34 INCH F SHAPE (MODIFIED)
- ② CONCRETE PARAPET TRANSITION, 34 INCH F SHAPE (MODIFIED)
- ③ CONCRETE MEDIAN (SPECIAL)
- ④ HOT-MIX ASPHALT SURFACE COURSE, MIX "C", N50, 2"
- ⑤ HOT-MIX ASPHALT BASE COURSE, 8" (IN 3 LIFTS)
- ⑥ SUB-BASE GRANULAR MATERIAL, TYPE B 6"
- ⑦ COMBINATION CONCRETE C&G, TYPE B-6.12
- ⑧ PRECAST MODULAR RETAINING WALL
- ⑨ CHAIN LINK FENCE, 8'

**NOTE:**  
EXISTING MEDIAN AND BARRIER REMOVAL  
SHALL ACCOMMODATE TRAFFIC CONTROL  
CROSS OVERS AS SHOWN IN THE TABLE BELOW.

CONGRESS PARKWAY TRAFFIC CONTROL CROSS-OVER TABLE				
STAGE	NAME	STATION		STATION
I	A	STA. 366+87.17	TO	STA. 372+59.17
I	B	STA. 383+08.91	TO	STA. 385+33.94
II	C	STA. 376+43.36	TO	STA. 379+05.88
II	D	STA. 383+00.06	TO	STA. 385+43.95
II	E	STA. 365+60.26	TO	STA. 372+61.73

**PB Americas, Inc.**  
230 WEST MONROE STREET,  
SUITE 900  
CHICAGO, IL. 60606

USER NAME = #USER#	DESIGNED - DM	REVISED -
FILE NAME = #FILENAME#	DRAWN - MS	REVISED -
PLOT SCALE = #SCALE#	CHECKED - DS	REVISED -
PLOT DATE = 5/6/2009	DATE - 5/08/09	REVISED -

**STATE OF ILLINOIS  
DEPARTMENT OF TRANSPORTATION**

**CONGRESS PARKWAY OVER SOUTH BRANCH OF THE CHICAGO RIVER  
TYPICAL SECTIONS**

SCALE: NONE SHEET NO. 11 OF 83 SHEETS STA. 377+01.00 TO STA. 382+45.28

F.A.P. RTE.	SECTION	COUNTY	TOTAL SHEETS	SHEET NO.
389	2424-2B-R	COOK	398	11
CONTRACT NO. 60D61				
FED. ROAD DIST. NO. 1   ILLINOIS   FED. AID PROJECT				