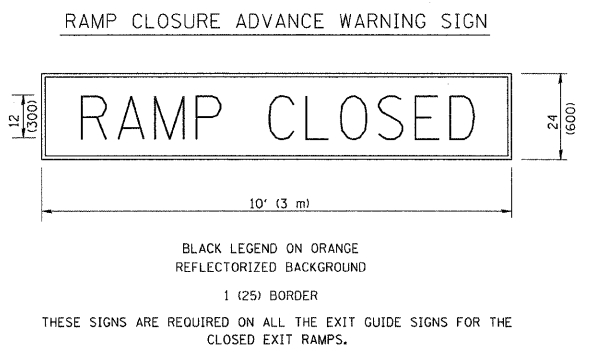
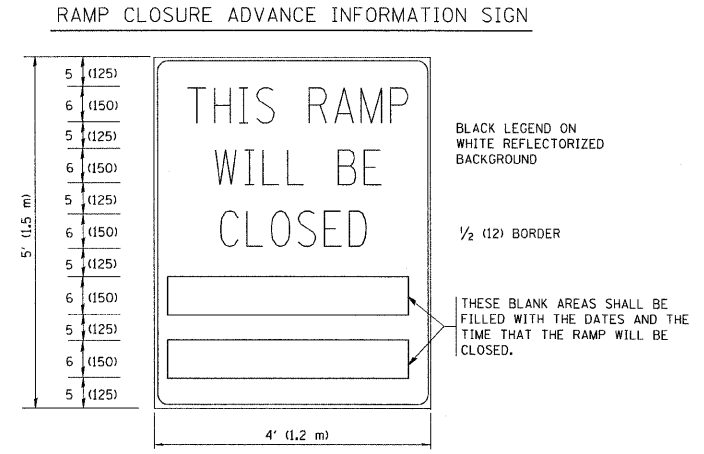


ENTRANCE RAMP CLOSURE

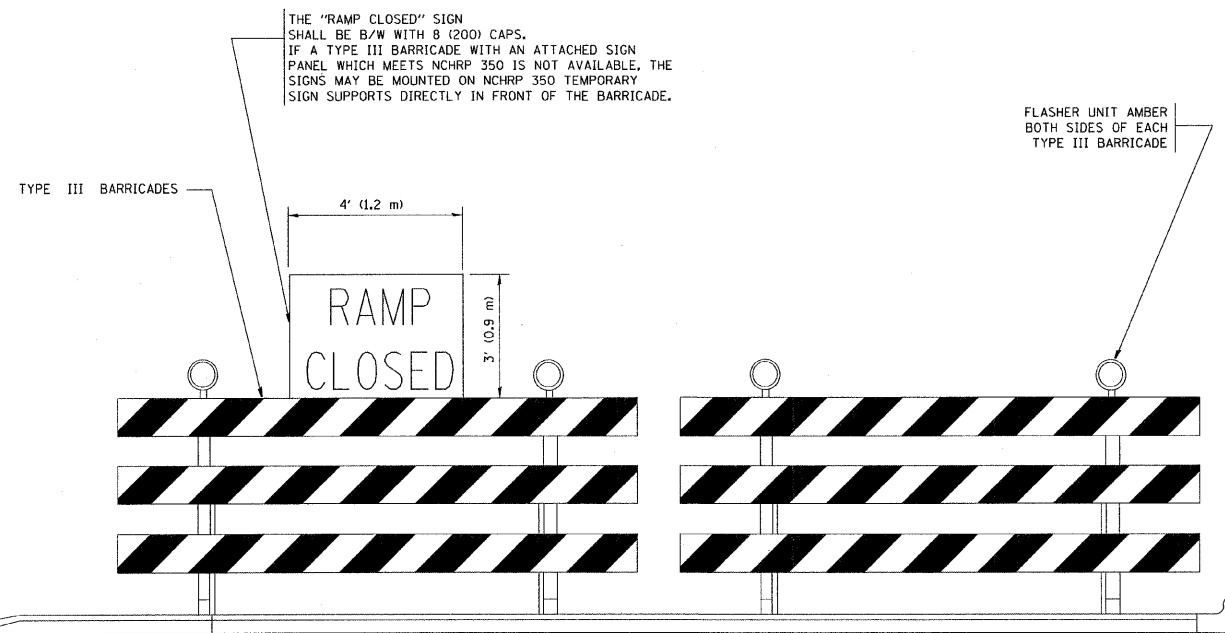
EXIT RAMP CLOSURE



THESE SIGNS ARE REQUIRED ON ALL THE EXIT GUIDE SIGNS FOR THE CLOSED EXIT RAMPS.



THESE SIGNS ARE REQUIRED ON BOTH SIDES OF THE RAMP, MINIMUM OF 1 WEEK IN ADVANCE OF THE CLOSURE.



DETAIL FOR REQUIRED BARRICADES & SIGNS

- SYMBOLS**
- ▬ TYPE II BARRICADE, DRUM OR VERTICAL BARRICADE WITH STEADY BURN MONO-DIRECTIONAL LIGHT
  - ⊞ TYPE III BARRICADE WITH FLASHING LIGHT

- GENERAL NOTES:**
1. CONES MAY BE SUBSTITUTED FOR DRUMS OR TYPE II BARRICADES DURING DAY OPERATIONS. CONES SHALL BE A MINIMUM OF 28 (700) HIGH.
  2. STEADY BURN LIGHTS WILL NOT BE REQUIRED FOR DAY OPERATIONS.
  3. A FLAGGER SHALL BE POSITIONED AT EACH CLOSED RAMP THAT IS OPEN TO CONSTRUCTION VEHICLES.
  4. ALL ROUTE MARKERS AND TRAILBLAZER ASSEMBLIES WHICH DIRECT MOTORISTS TO A CLOSED ENTRANCE RAMP SHALL BE COVERED.
  5. THE SIGNING AND BARRICADING WHICH IS REQUIRED BY THIS DETAIL SHALL BE INCLUDED IN THE COST OF TRAFFIC CONTROL AND PROTECTION (EXPRESSWAYS).
  6. AUTHORIZATION FROM THE DISTRICT'S BUREAU OF TRAFFIC IS REQUIRED FOR ALL RAMP CLOSURES.
  7. THE RAMP CLOSURE ADVANCE INFORMATION SIGNS SHALL BE ERECTED IF THE CLOSURE TIME EXCEEDS TWENTY-FOUR (24) HOURS. ADDITIONAL ADVANCE WARNING SIGNS ON EXIT GUIDE SIGNING WILL BE REQUIRED FOR EXIT RAMP CLOSURES THAT EXCEED TWENTY FOUR (24) HOURS IN LENGTH.

ALL DIMENSIONS ARE IN INCHES (MILLIMETERS) UNLESS OTHERWISE SHOWN.

FILE NAME = W:\diststd\22x34\td88.dgn	USER NAME = gaglianob	DESIGNED - DWS	REVISED - DWS 12-94	<b>STATE OF ILLINOIS DEPARTMENT OF TRANSPORTATION</b>	<b>FREEWAY ENTRANCE AND EXIST RAMP CLOSURE DETAILS</b>			F.A. RTE.	SECTION	COUNTY	TOTAL SHEETS	SHEET NO.
PLOT SCALE = 50,000 / / IN.	CHECKED -	REVISED - DWS/JAF 12-02	REVISED - JAF 02-06		SCALE: NONE	SHEET NO. 1 OF 1 SHEETS	STA.	TO STA.	COOK	398	68	
PLOT DATE = 1/4/2008	DATE - 02-83	REVISED - SPB 01-07						<b>TC-08</b>		<b>CONTRACT NO. 60D61</b>		
FED. ROAD DIST. NO. 1 ILLINOIS FED. AID PROJECT												