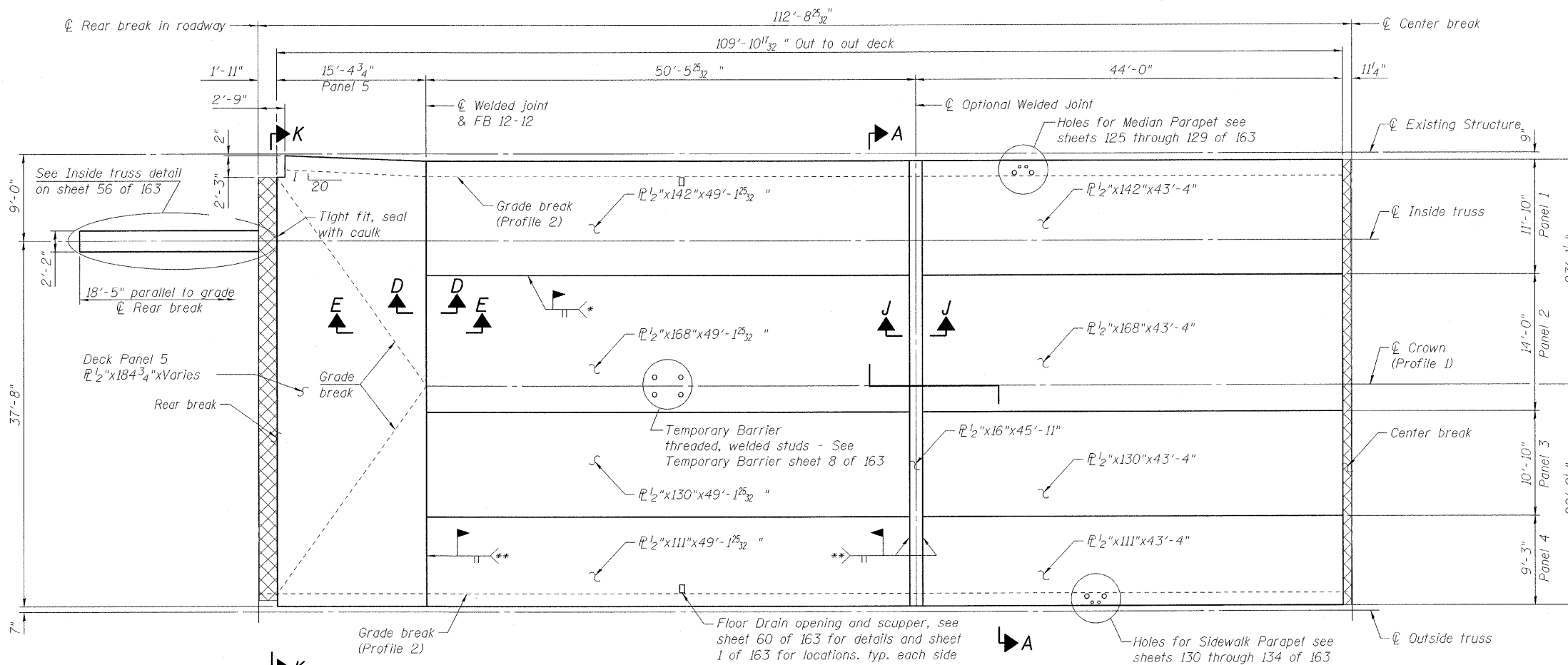
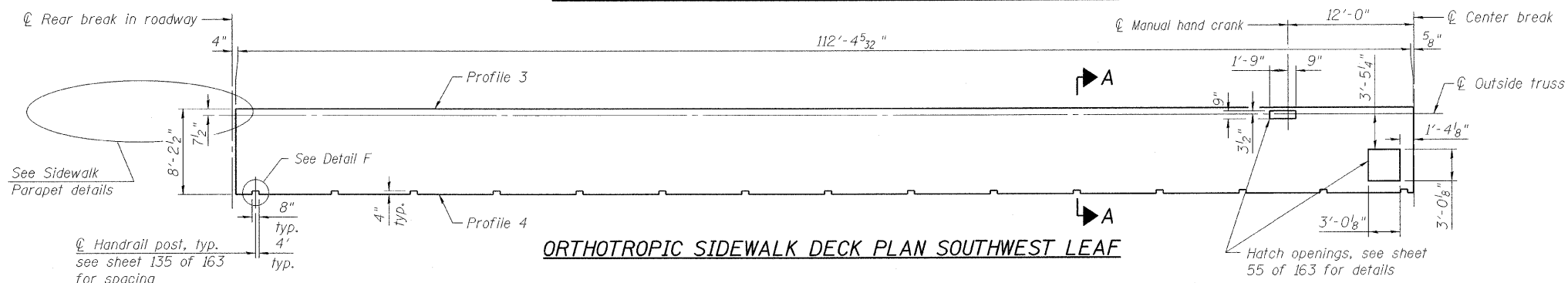


STATE OF ILLINOIS
DEPARTMENT OF TRANSPORTATION



ORTHOTROPIC ROADWAY DECK PLAN SOUTHWEST LEAF



ORTHOTROPIC SIDEWALK DECK PLAN SOUTHWEST LEAF

- * CJP, Use ceramic backing bar. Remove after welding, grind top side smooth in transverse direction typ. between panels 1-4.
- ** CJP, Use ceramic backing bar. Remove after welding, grind top side smooth in longitudinal direction.

Notes:
All dimensions are horizontal.
Plate dimensions given should be corrected for slope, grade breaks, and anticipated weld clearance and shrinkage requirements.
For Section A-A see sheet 48 of 163.
For Section K-K see sheet 59 of 163.
For Detail F see sheet 54 of 163.
For all other sections see sheet 53 of 163.
For center break details see sheet 58 of 163.
Bridge Wearing Surface applies on top surface of Deck PL 1/2\"/>

	⊖ Rear Break	FB 14A	FB 12	FB 10	FB 8	PVC STA	FB 6	FB 4	FB 2	PVI STA	FB 0	⊖ Center Break								
Distance from ⊖ Rear break	0"	2'-7 1/4"	5'-9"	11'-6 3/8"	17'-3 3/4"	25'-2 5/8"	33'-1 1/2"	41'-0 3/8"	48'-11 1/4"	56'-10 1/8"	61'-11 7/8"	64'-9"	72'-7 7/8"	80'-6 3/4"	88'-5 5/8"	96'-4 1/2"	96'-11 1/8"	104'-1 1/32"	111'-9 11/32"	112'-7 29/32"
Profile 1	0"	1/4"	1"	2 3/8"	3 5/8"	4 3/8"	5 1/8"	6"	6 3/4"	7 1/2"	8"	8 1/4"	8 7/8"	9 1/4"	9 1/2"	9 5/8"	9 5/8"	9 5/8"	9 3/8"	9 1/4"
Profile 2	0"	1/4"	1/2"	1 1/8"	1 5/8"	2 3/8"	3 1/8"	3 3/8"	4 3/4"	5 1/2"	6"	6 1/4"	6 7/8"	7 1/4"	7 5/8"	7 5/8"	7 5/8"	7 1/2"	7 3/8"	7 1/4"
Profile 3	9"	9 1/4"	9 1/2"	10 1/8"	10 5/8"	11 3/8"	1'-0 7/8"	1'-1 3/4"	1'-2 1/2"	1'-3"	1'-3 1/4"	1'-4 1/8"	1'-4 7/8"	1'-4 1/4"	1'-4 1/2"	1'-4 5/8"	1'-4 5/8"	1'-4 1/2"	1'-4 3/8"	1'-4 1/4"
Profile 4	9"	9"	9"	9 1/8"	9 3/8"	9 7/8"	10 5/8"	11 3/8"	1'-0 1/4"	1'-1"	1'-1 1/2"	1'-1 3/4"	1'-3 3/8"	1'-2 3/4"	1'-3"	1'-3 1/8"	1'-3 1/8"	1'-3"	1'-2 7/8"	1'-2 3/4"

Note: Rear break is level and horizontal. Profiles are given from horizontal at ⊖ Rear break. Profiles are at top of wearing surface. 1/4" wearing surface applied on Roadway Deck and 1/8" wearing surface on Sidewalk Deck.

DESIGNED	P. PILARSKI
CHECKED	J. GRAINAWI
DRAWN	D. C. PATEL
CHECKED	A. HAMMAD

PROFILE AT TOP OF WEARING SURFACE

SUPERSTRUCTURE
SOUTHWEST MOVABLE
STRUCTURE NO. 016-2445

SHEET NO. 44 163 SHEETS	F.A.P RTE.	SECTION	COUNTY	TOTAL SHEETS	SHEET NO.
	389	2424.2B-R	COOK	398	125
FED. ROAD DIST. NO. 7 ILLINOIS			FED. AID PROJECT		
CONTRACT NO.			60D61		

PB Americas, Inc.
230 WEST MONROE STREET,
SUITE 900
CHICAGO, IL. 60606