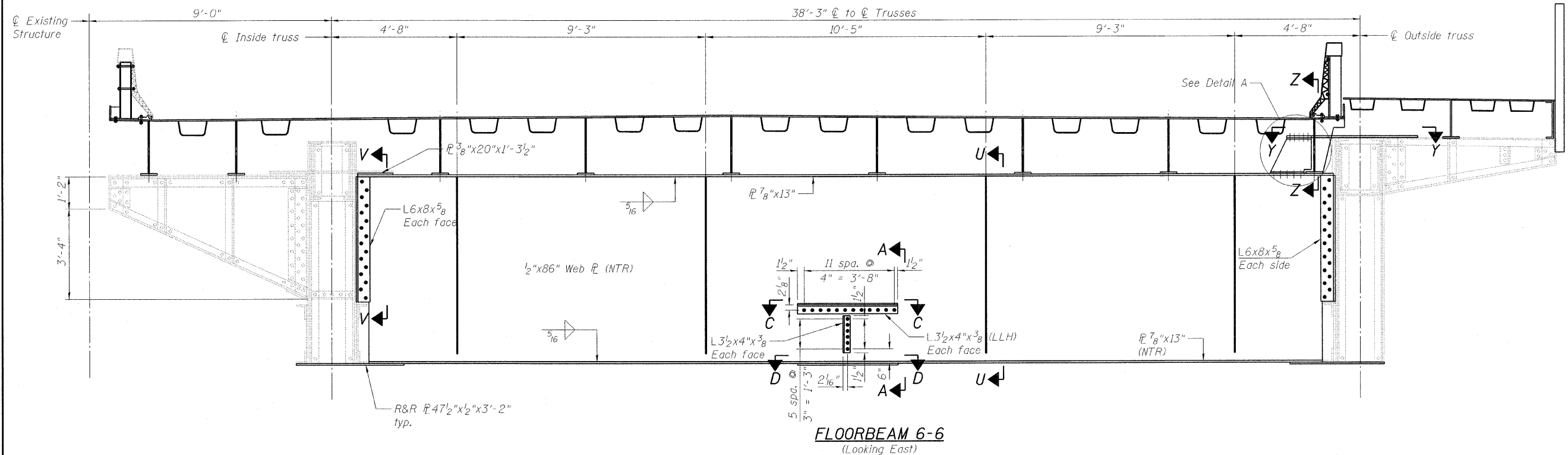
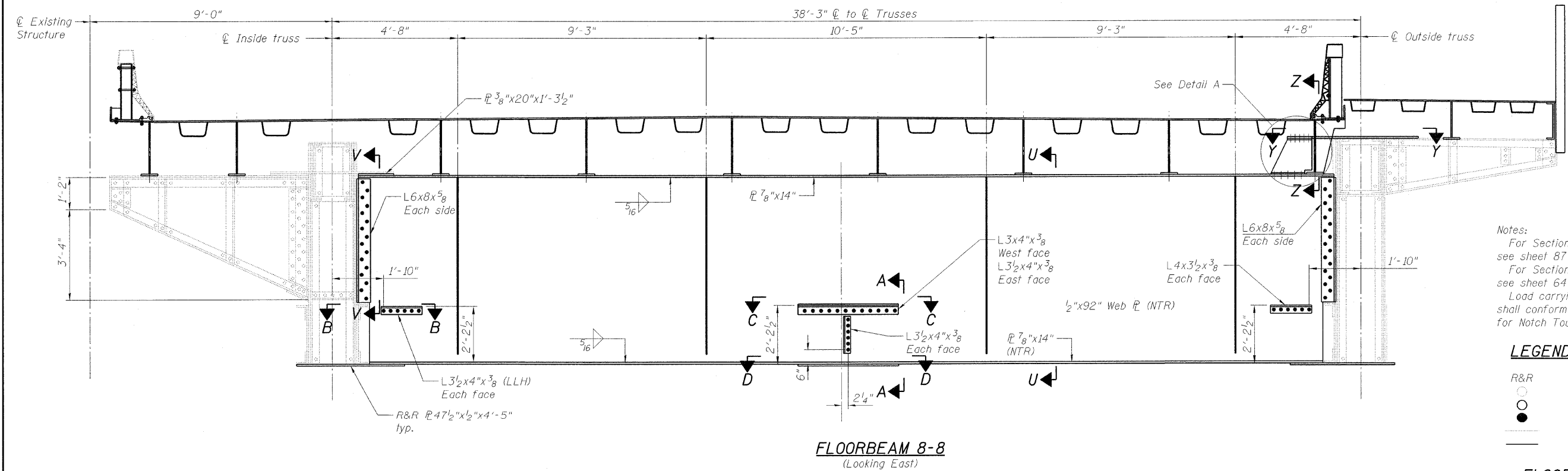


STATE OF ILLINOIS
DEPARTMENT OF TRANSPORTATION



FLOORBEAM 6-6
(Looking East)



FLOORBEAM 8-8
(Looking East)

Notes:
For Sections A-A, B-B, C-C and D-D, see sheet 87 of 163.
For Sections Y-Y, Z-Z and Detail A, see sheet 64 of 163.
Load carrying components designated "NTR" shall conform to the supplemental requirements for Notch Toughness, Zone 2.

LEGEND

- R&R Remove & replace
- Existing fastener to remain
- Hole to match existing location
- New hole
- Existing member to remain
- New member

**FLOORBEAM DETAILS
SOUTHWEST LEAF
STRUCTURE NO. 016-2445**

DESIGNED	D. V. PATEL
CHECKED	J. GRAINAWI
DRAWN	D. C. PATEL
CHECKED	A. HAMMAD

T:\16849A\Structural\Cadd\Pre-final\EB_Plans\162445-80D61-FBE-061.dgn
07-MAY-2009

PB Americas, Inc.
230 WEST MONROE STREET,
SUITE 900
CHICAGO, IL. 60606

SHEET NO. 63 163 SHEETS	F.A.P RTE.	SECTION	COUNTY	TOTAL SHEETS	SHEET NO.
	389	2424.2B-R	COOK	398	144
			CONTRACT NO. 60D61		
FED. ROAD DIST. NO. 7 ILLINOIS FED. AID PROJECT					