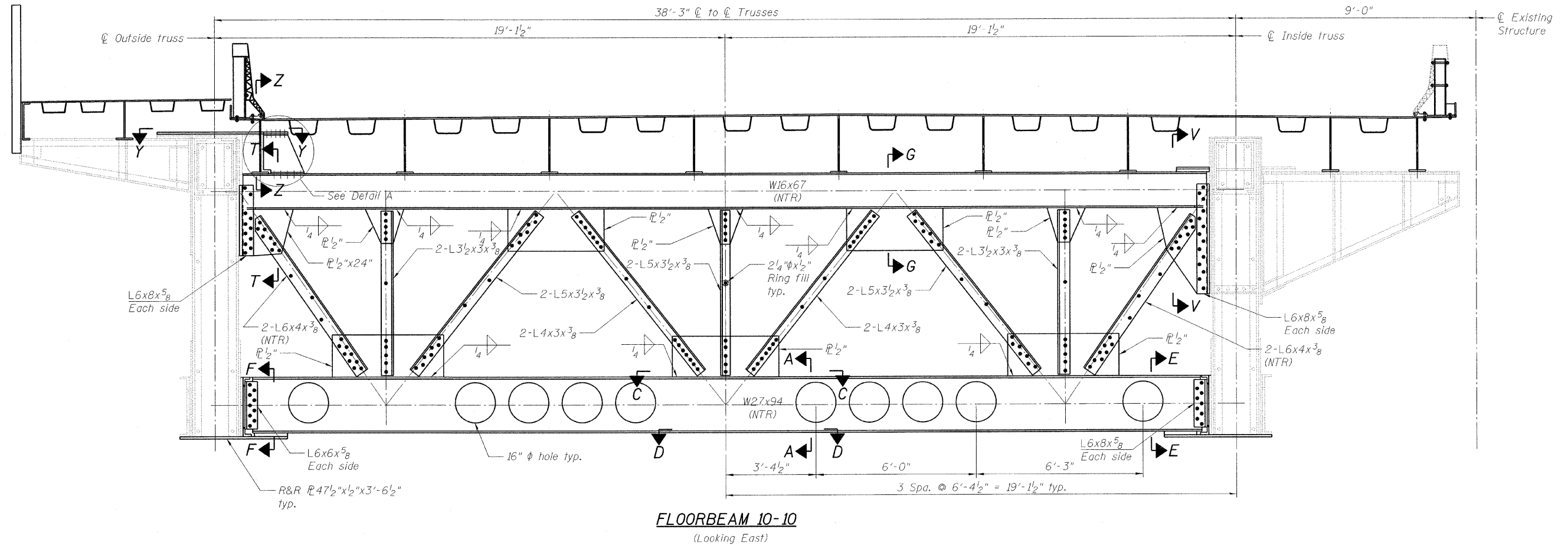
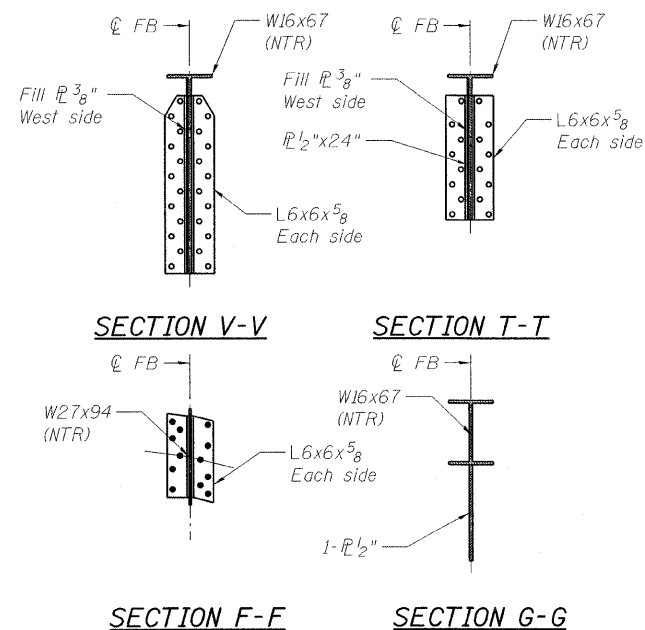


STATE OF ILLINOIS
DEPARTMENT OF TRANSPORTATION



FLOORBEAM 10-10
(Looking East)



Notes:
For Sections A-A, C-C, D-D and E-E, see sheet 87 of 163.
For Section Y-Y, Z-Z and Detail A, see sheet 64 of 163.
Load carrying components designated "NTR" shall conform to the supplemental requirements for Notch Toughness, Zone 2.

LEGEND

- R&R Remove & replace
- Existing fastener to remain
- Hole to match existing location
- New hole
- Existing member to remain
- New member

**FLOORBEAM DETAILS
NORTHEAST LEAF
STRUCTURE NO. 016-2445**

DESIGNED	D. V. PATEL
CHECKED	J. GRAINAWI
DRAWN	D. C. PATEL
CHECKED	A. HAMMAD

PB Americas, Inc.
230 WEST MONROE STREET,
SUITE 900
CHICAGO, IL. 60606

SHEET NO. 76 163 SHEETS	F.A.P. RTE.	SECTION	COUNTY	TOTAL SHEETS	SHEET NO.
	389	2424.2B-R	COOK	398	157
FED. ROAD DIST. NO. 7 ILLINOIS			FED. AID PROJECT		
				CONTRACT NO. 60D61	