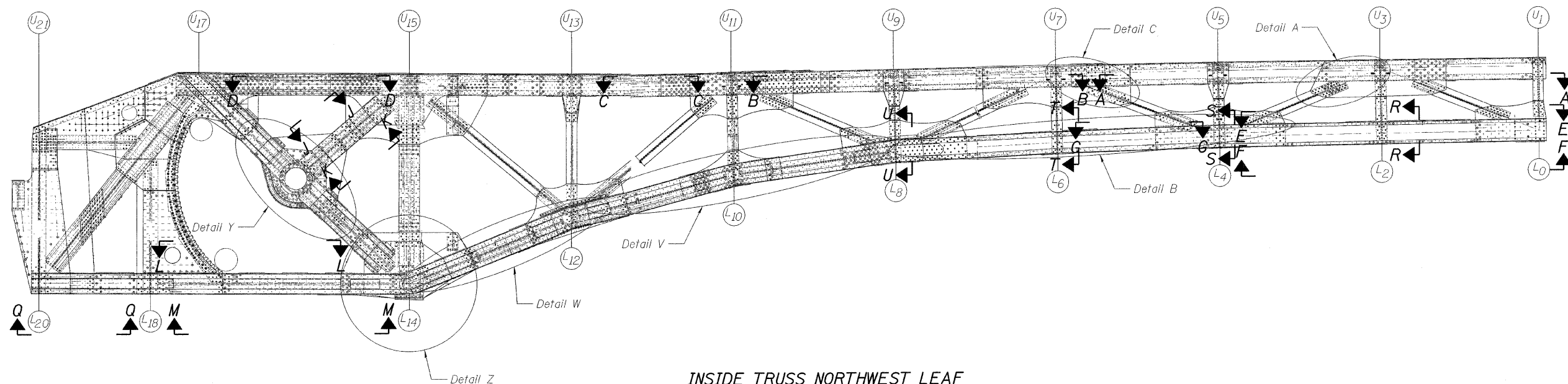
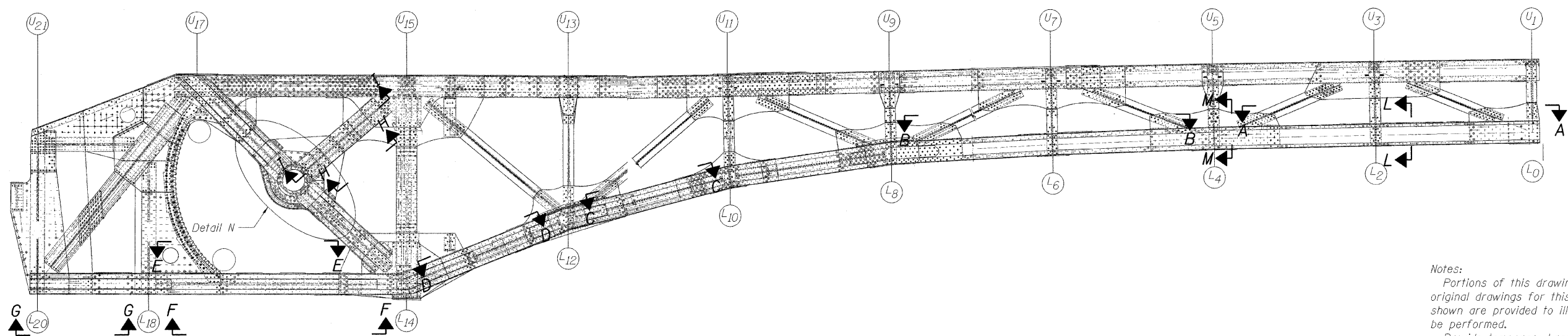


STATE OF ILLINOIS
DEPARTMENT OF TRANSPORTATION



INSIDE TRUSS NORTHWEST LEAF
Looking North



OUTSIDE TRUSS NORTHWEST LEAF
Looking North

Notes:
 Portions of this drawing are extracted from original drawings for this bridge. Details shown are provided to illustrate the work to be performed.
 Provide temporary bracing and supports to maintain structural integrity during rehabilitation. Cost included in the cost of "Structural Steel Repair".
 For inside truss southwest leaf section and details see sheets 114-118, of 163.
 For outside truss southwest leaf section and details see sheets 119-120, of 163.

DESIGNED	D. V. PATEL
CHECKED	J. GRAINAWI
DRAWN	D. C. PATEL
CHECKED	A. HAMMAD

PB Americas, Inc.
 230 WEST MONROE STREET,
 SUITE 900
 CHICAGO, IL. 60606

SHEET NO. 113 163 SHEETS	F.A.P RTE.	SECTION	COUNTY	TOTAL SHEETS	SHEET NO.
	389	2424.2B-R	COOK	398	194
FED. ROAD DIST. NO. 7 ILLINOIS			FED. AID PROJECT		
					CONTRACT NO. 60D61

TRUSS REPAIRS (NORTHWEST)
STRUCTURE NO. 016-2445