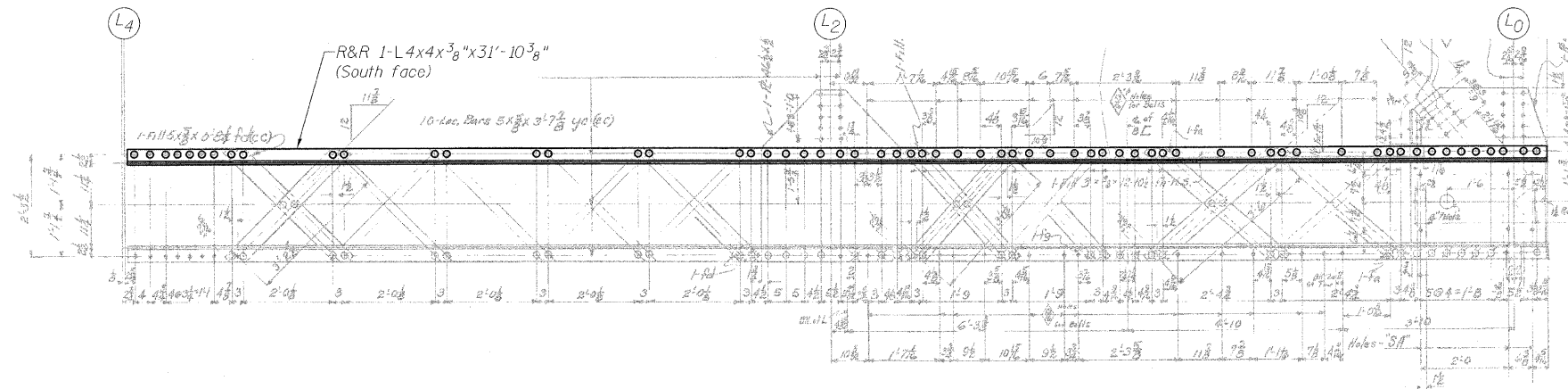
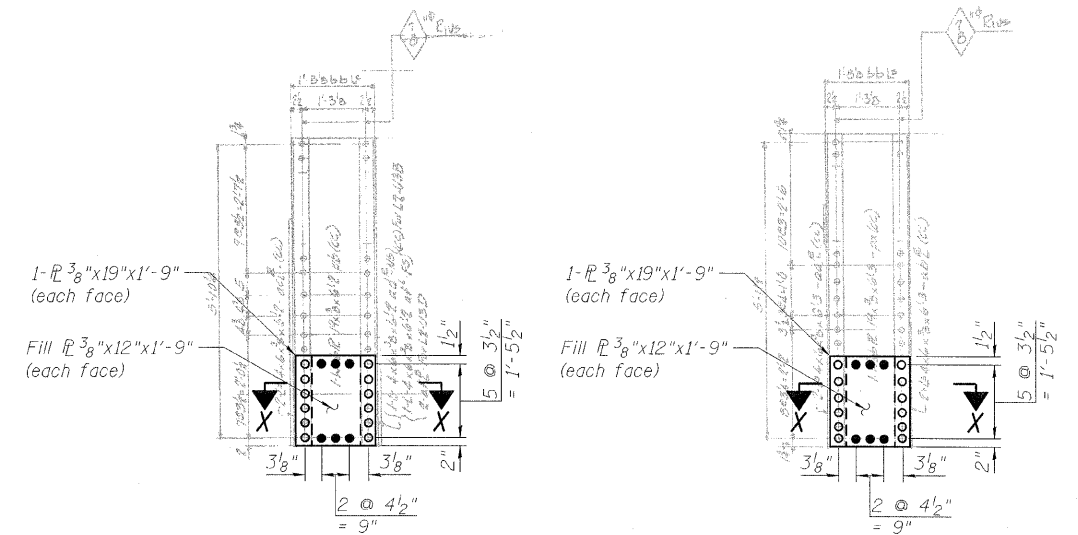


STATE OF ILLINOIS
DEPARTMENT OF TRANSPORTATION

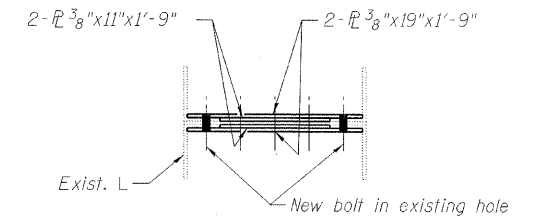


SECTION A-A

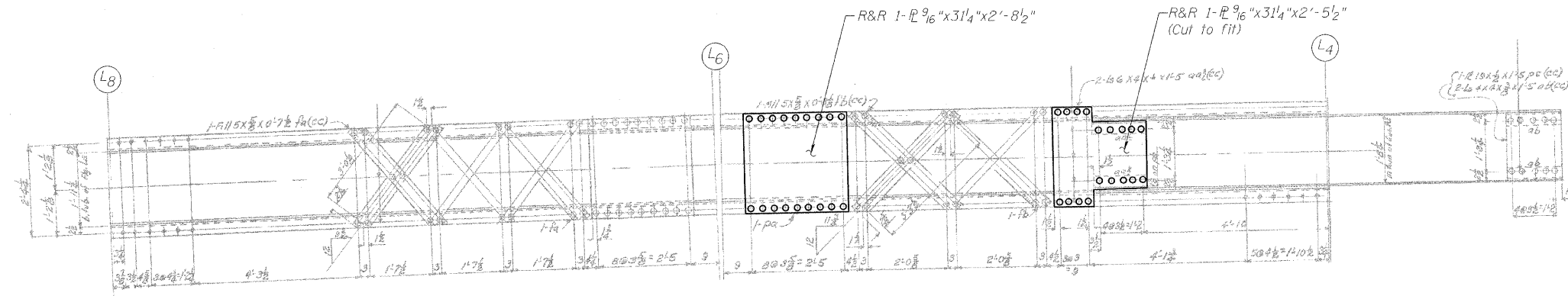


SECTION L-L
POST L2-U3

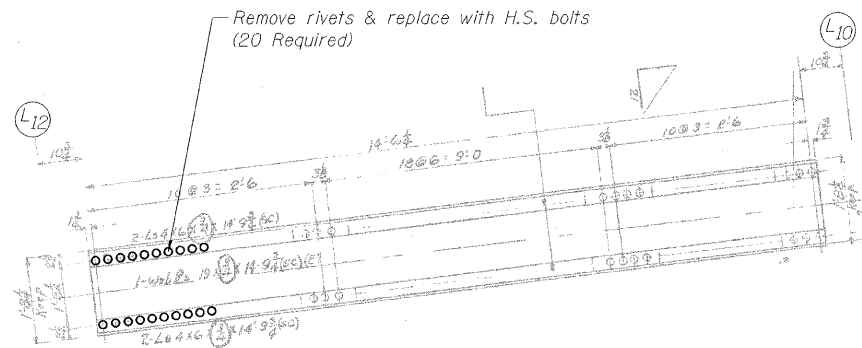
SECTION M-M
POST L4-U5



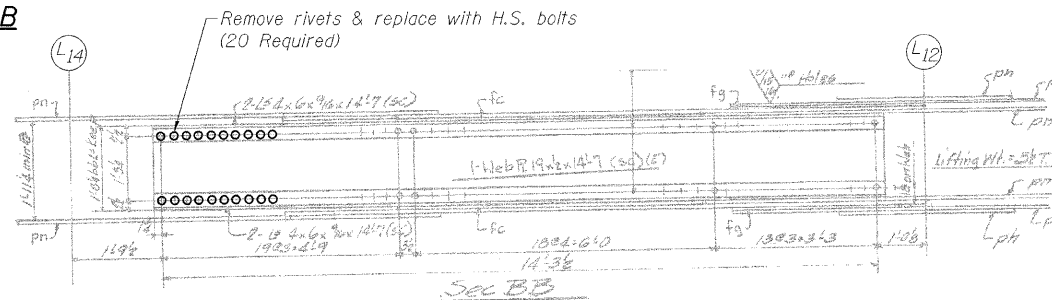
SECTION X-X



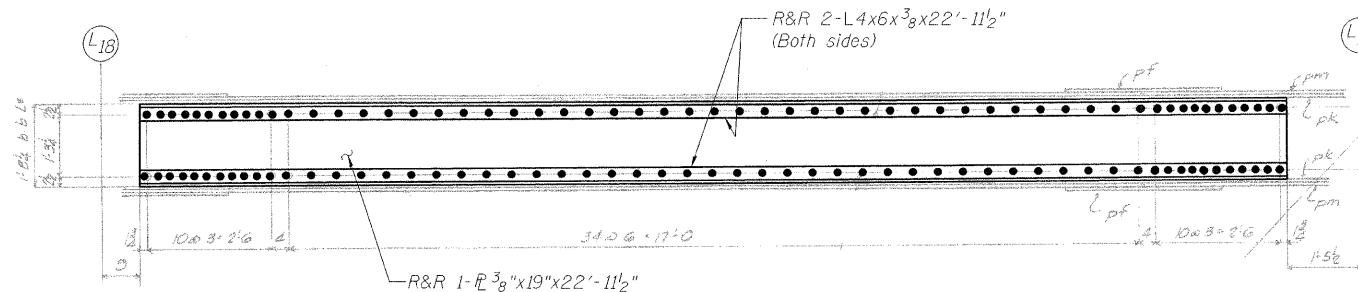
SECTION B-B



SECTION C-C



SECTION D-D



SECTION E-E

LEGEND

- R&R Remove & replace
- Existing fastener to remain
- Hole to match existing location
- New hole
- Existing member to remain
- New member

Note:
Portions of this drawing are extracted from original drawings for this bridge. Details shown are provided to illustrate the work to be performed.

TRUSS REPAIRS
OUTSIDE TRUSS (NORTHWEST)
STRUCTURE NO. 016-2445

DESIGNED	P. PETERSON
CHECKED	J. GRAINAWI
DRAWN	D. C. PATEL
CHECKED	A. HAMMAD

PB Americas, Inc.
230 WEST MONROE STREET,
SUITE 900
CHICAGO, IL 60606

SHEET NO. 119	F.A.P. RTE. 389	SECTION 2424.2B-R	COUNTY COOK	TOTAL SHEETS 398	SHEET NO. 200
163 SHEETS		CONTRACT NO. 60D61			
FED. ROAD DIST. NO. 7 ILLINOIS FED. AID PROJECT					