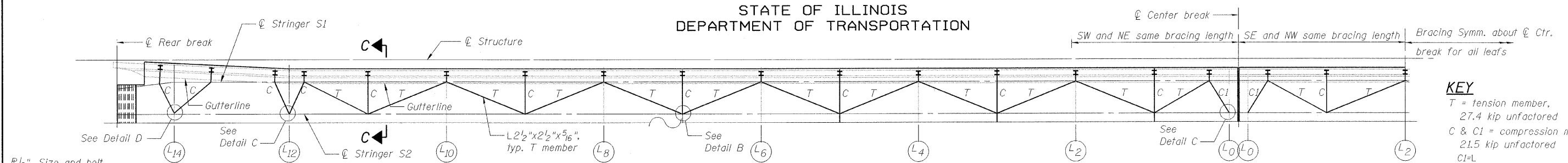
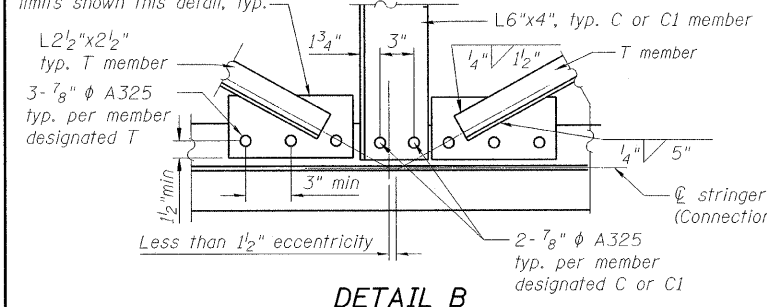


STATE OF ILLINOIS
DEPARTMENT OF TRANSPORTATION



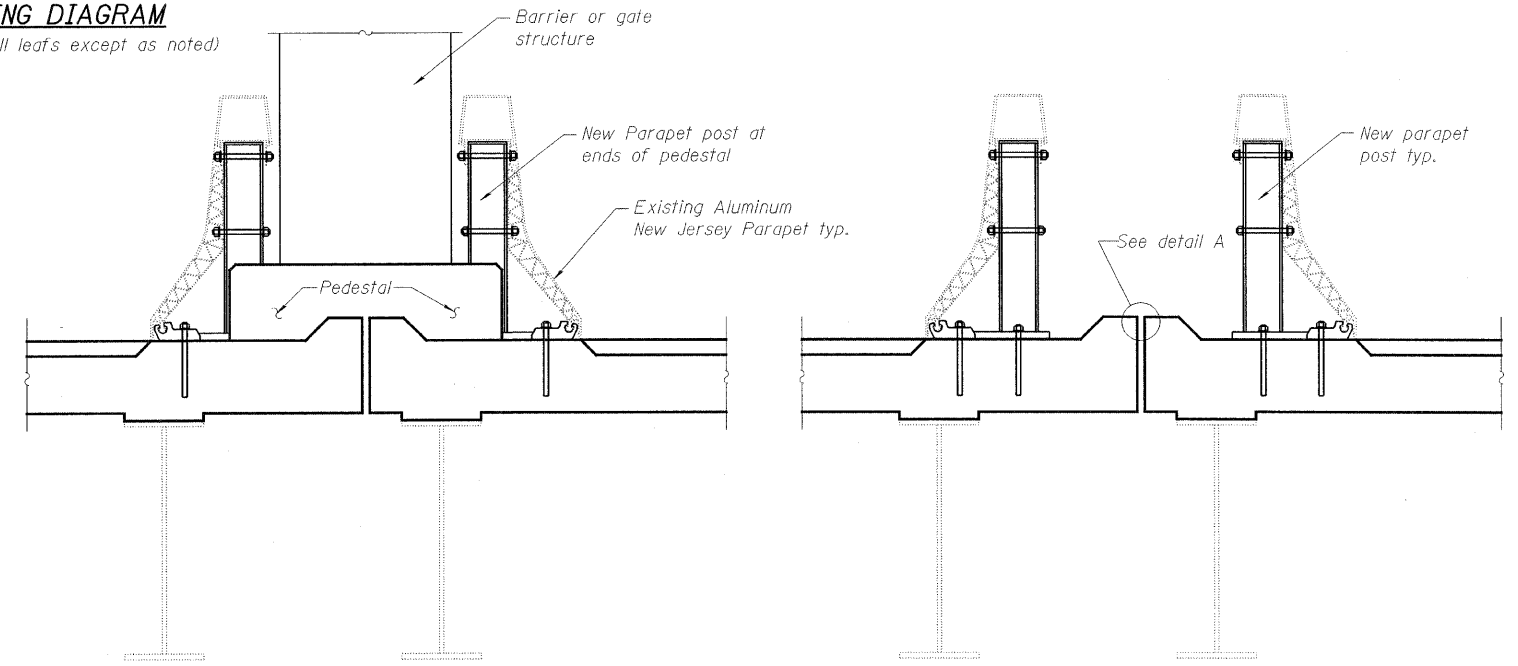
KEY
T = tension member,
27.4 kip unfactored
C & CI = compression member,
21.5 kip unfactored
CI=L

$\frac{1}{2}$ " size and bolt arrangement by contractor within limits shown in this detail, typ.



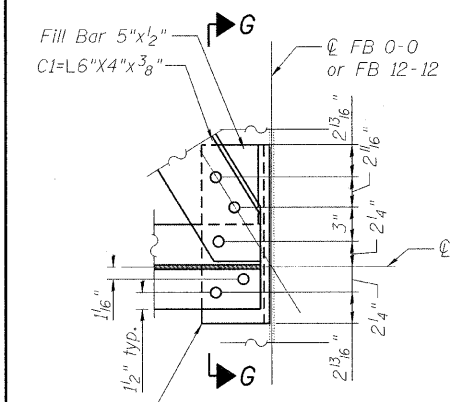
DETAIL B

MEDIAN PARAPET BRACING DIAGRAM
(Southwest leaf shown - layout same for all leaves except as noted)

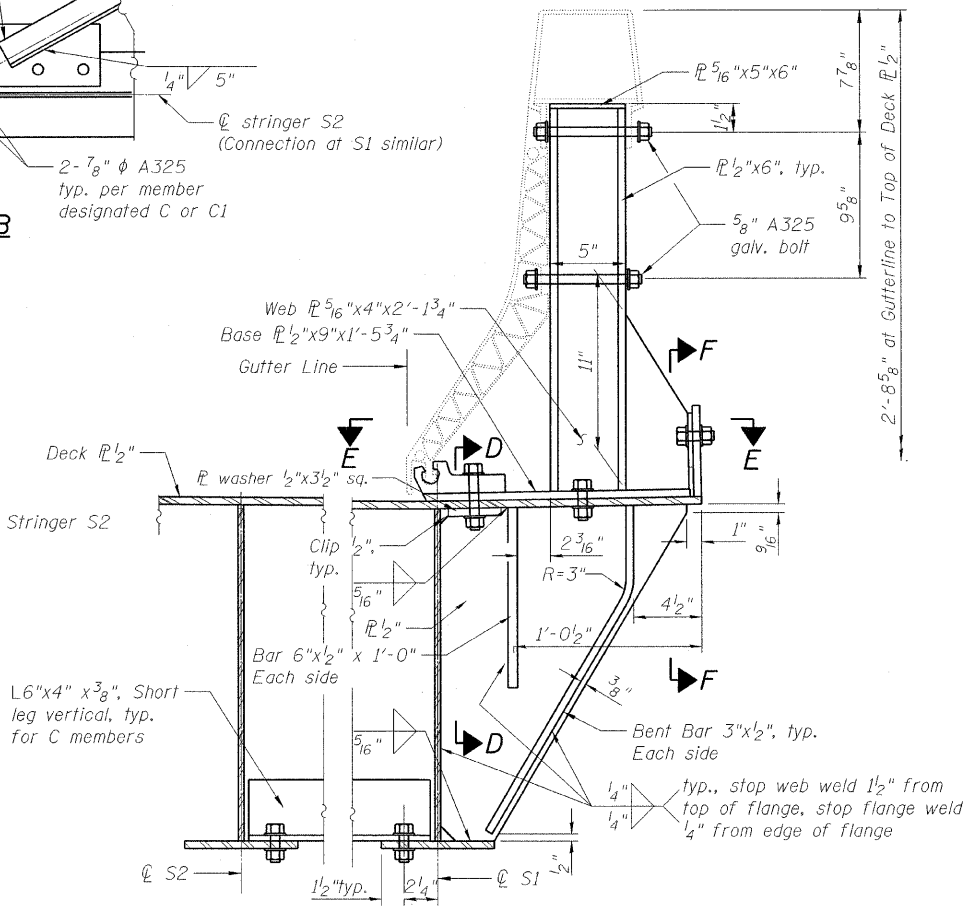


SECTION A-A
(Double fixed part parapet pedestal)

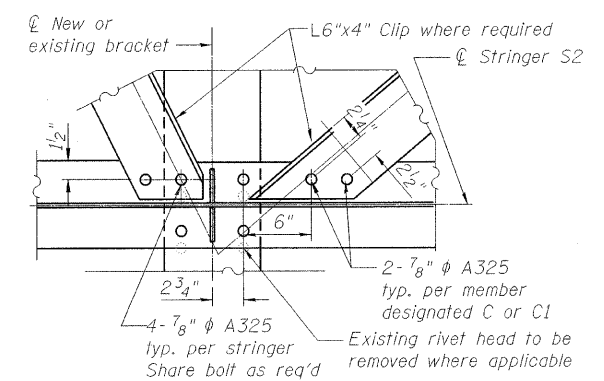
SECTION B-B
(Double fixed part)



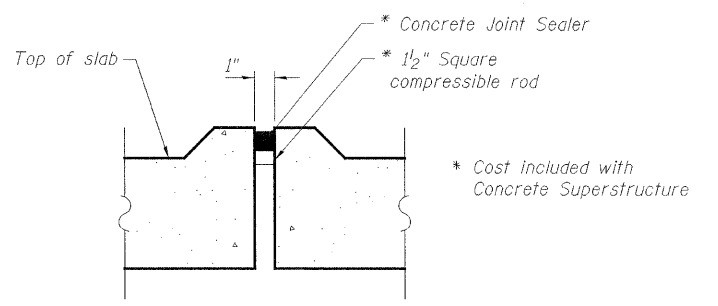
DETAIL C



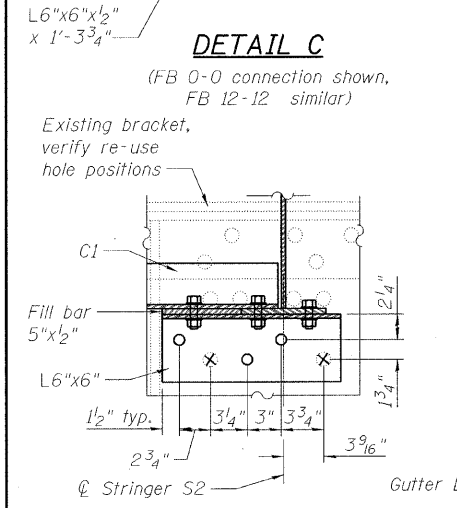
SECTION C-C



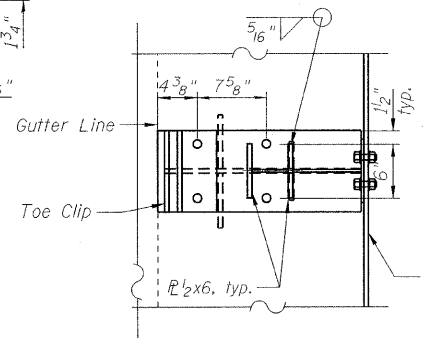
DETAIL D



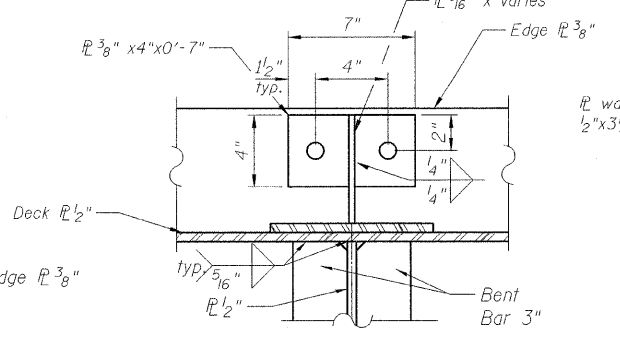
DETAIL A



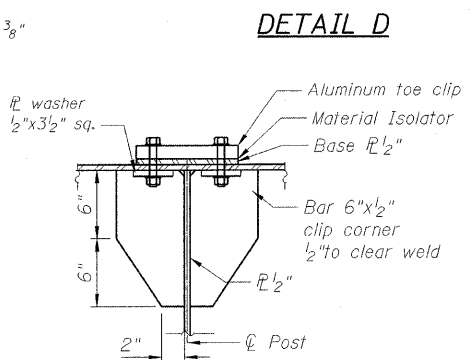
SECTION G-G



SECTION E-E



SECTION F-F



SECTION D-D

**MEDIAN PARAPET DETAILS
STRUCTURE NO. 016-2445**

Note: All bolts 7/8" ϕ A325. Use 30# felt other material isolator as approved by Engineer between contact areas of aluminum and steel.

DESIGNED	P. PILARSKI
CHECKED	J. GRAINAWI
DRAWN	D. C. PATEL
CHECKED	A. HAMMAD

SHEET NO. 129	F.A.P RTE.	SECTION	COUNTY	TOTAL SHEETS	SHEET NO.
	389	2424.2B-R	COOK	398	210
163 SHEETS			CONTRACT NO. 60D61		
FED. ROAD DIST. NO. 7 ILLINOIS FED. AID PROJECT					

PB Americas, Inc.
230 WEST MONROE STREET,
SUITE 900
CHICAGO, IL. 60606

T:\16843A\Structural\Cadd\Pre-final\EB_Plans\0162445-60D61-NIB-127.dgn 07-MAY-2009