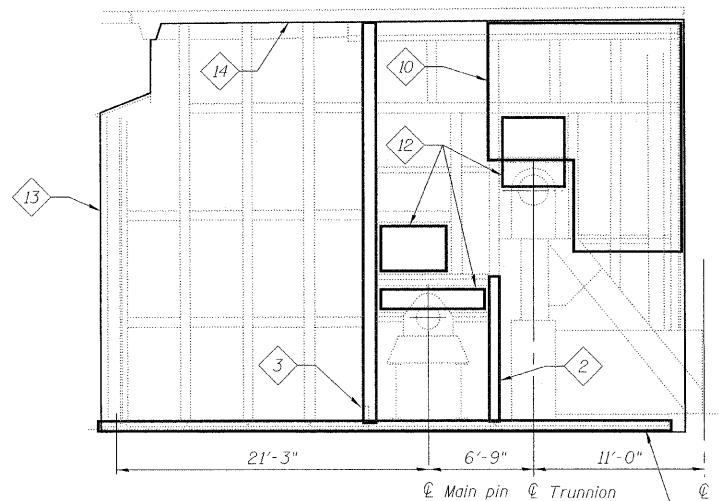


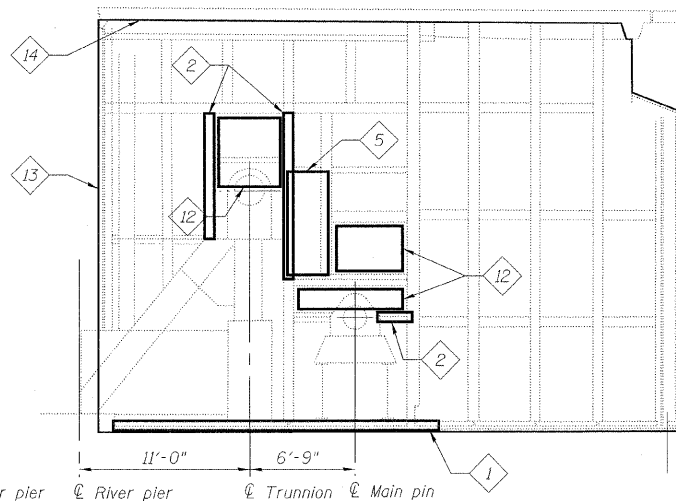
STATE OF ILLINOIS
DEPARTMENT OF TRANSPORTATION

KEYED NOTES:

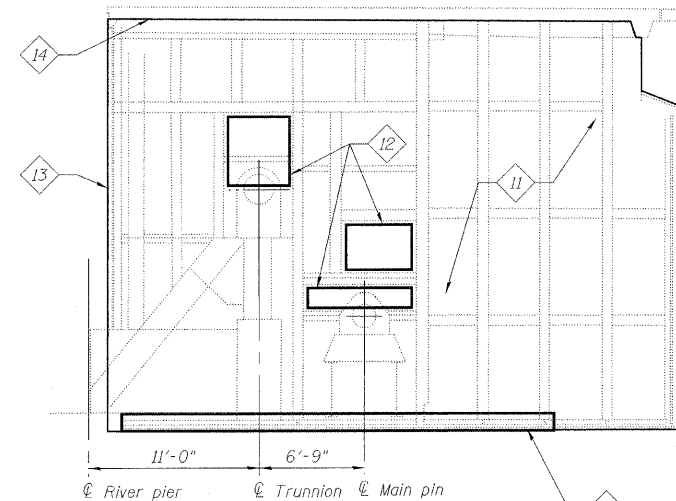
- 1 Remove and replace 4"x4"x3/8" angle and 18"x3/8" plate along the bottom of all enclosure walls.
- 2 Remove and replace WT5x24.5.
- 3 Repair base of WT5x24.5.
- 4 NOT USED
- 5 Remove and replace doors and frames.
- 6 NOT USED
- 7 NOT USED
- 8 NOT USED
- 9 NOT USED
- 10 Remove and replace missing section of wall.
- 11 Remove and replace wall paneling on both enclosure walls.
- 12 Replace with removable panel. For panel detail, see sheet 144 of 163.
- 13 Limits of new 1/2" thick (20 gauge) fixed metal wall panels on steel framing (unless noted otherwise).
- 14 Underside of structure above.



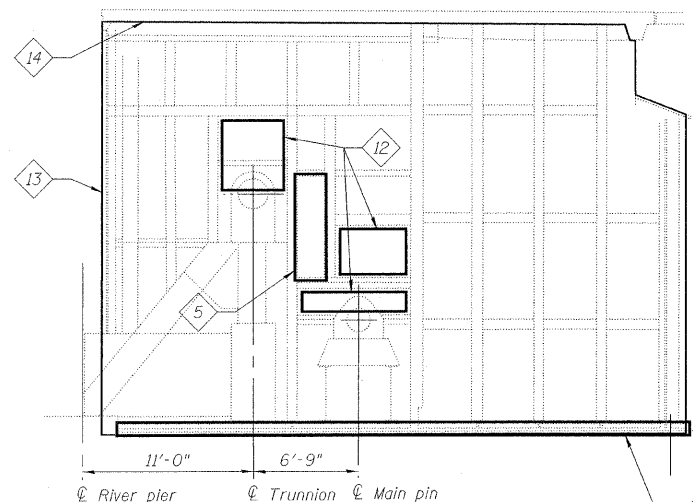
ELEVATION A2
ENCLOSURE WALL ELEVATION



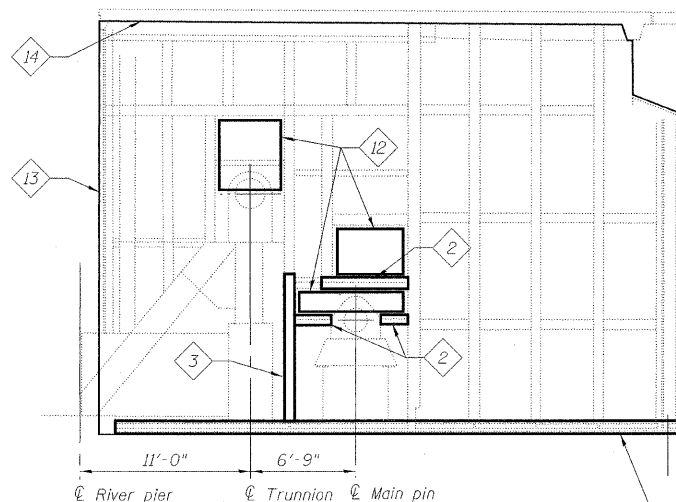
ELEVATION C2
ENCLOSURE WALL ELEVATION



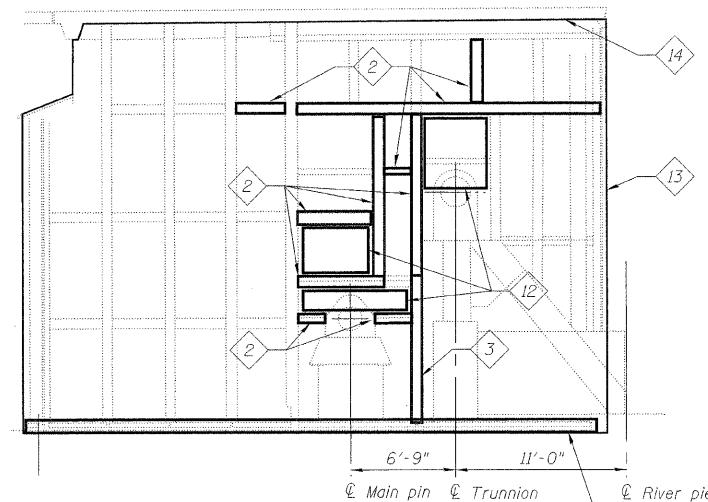
ELEVATION G2
ENCLOSURE WALL ELEVATION



ELEVATION I2
ENCLOSURE WALL ELEVATION



ELEVATION L2
ENCLOSURE WALL ELEVATION



ELEVATION O2
ENCLOSURE WALL ELEVATION

Note:
The removal of existing plywood wall paneling at some wall section is included in the cost Metal Panels.

LEGEND:

- Existing member to remain
- New member

PB Americas, Inc.
230 WEST MONROE STREET,
SUITE 900
CHICAGO, IL. 60606

SHEET NO. 143 163 SHEETS	F.A.P RTE.	SECTION	COUNTY	TOTAL SHEETS	SHEET NO.
	389	2424.2B-R	COOK	398	224
CONTRACT NO. 60D61					
FED. ROAD DIST. NO. 7 ILLINOIS FED. AID PROJECT					

ENCLOSURE WALL ELEVATIONS
STRUCTURE NO. 016-2445

DESIGNED	K. STOCKIE
CHECKED	J. SHURMAN
DRAWN	E. KIENSTRA
CHECKED	A. HAMMAD