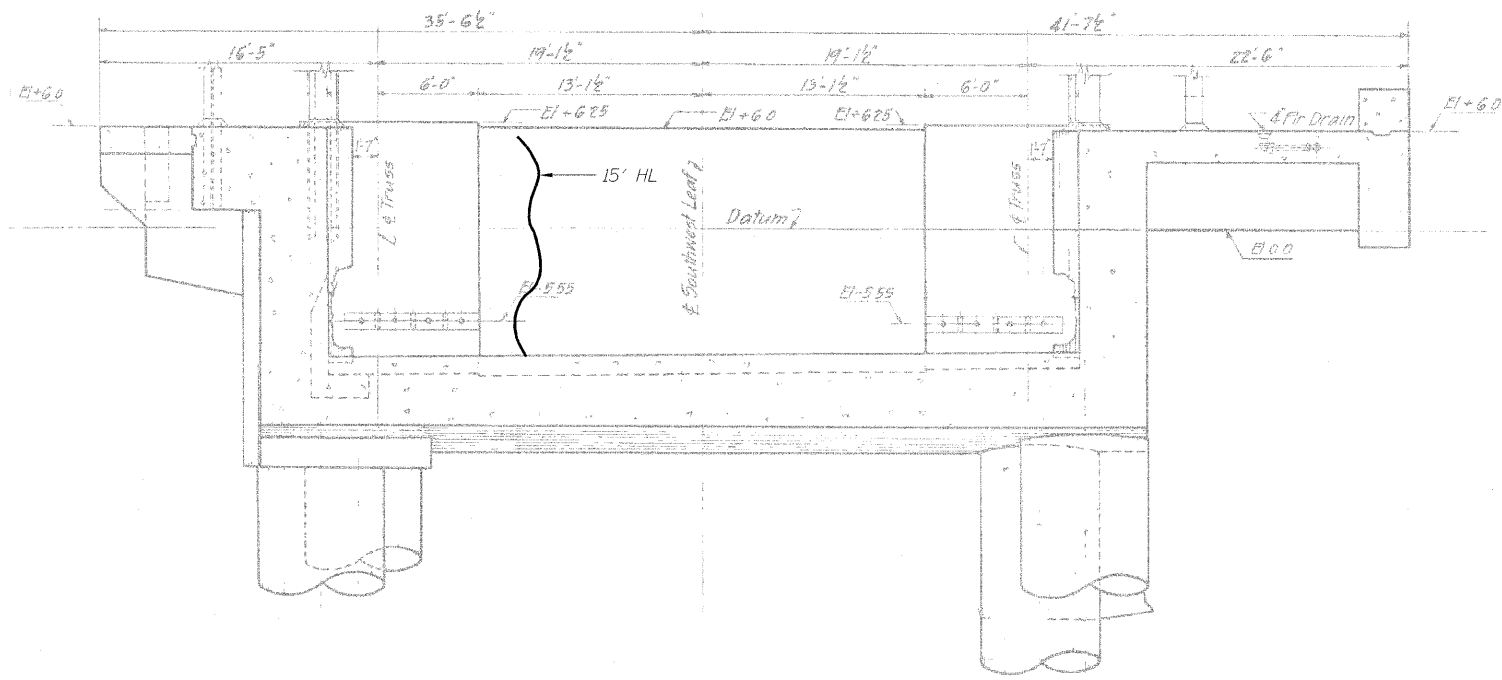
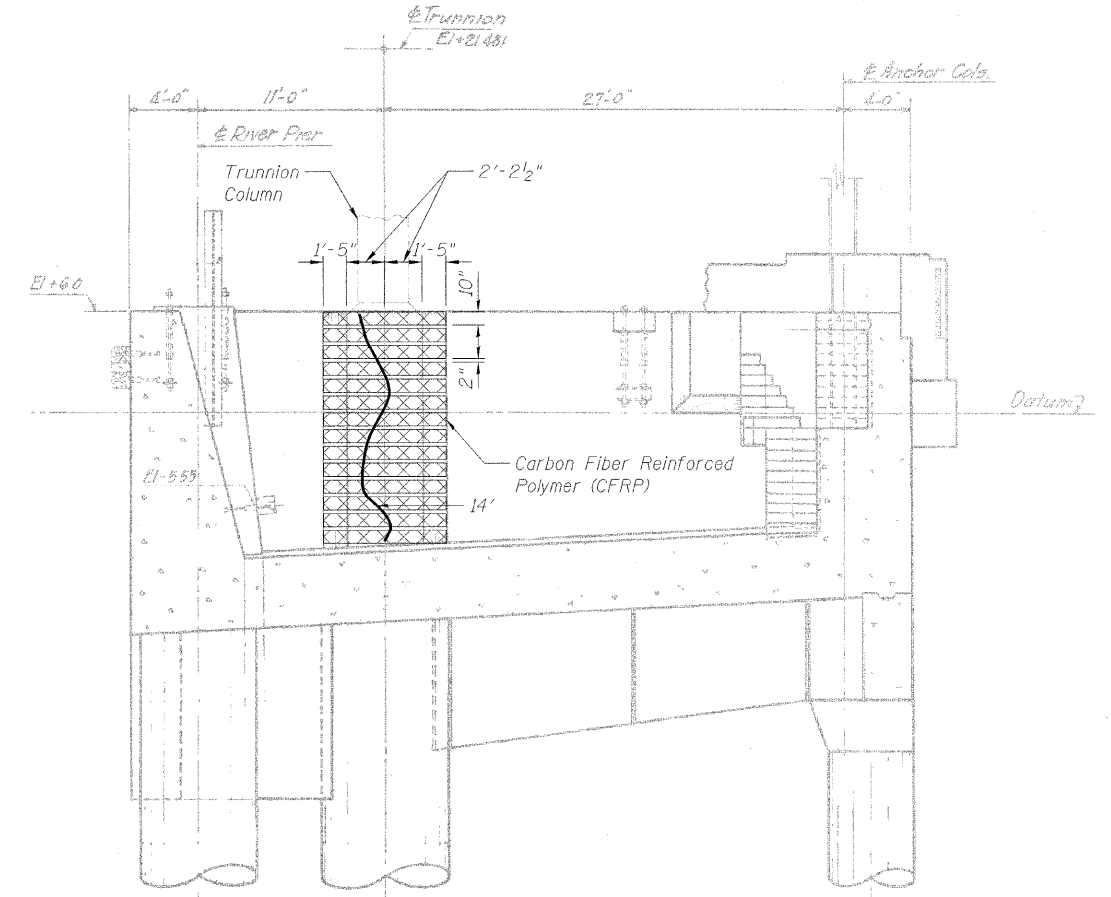


STATE OF ILLINOIS
DEPARTMENT OF TRANSPORTATION



SECTION B-B



SECTION C-C

BILL OF MATERIAL

Item	Unit	Quantity
Epoxy Crack Injection	Foot	33
Carbon Fiber Reinforced Polymer (CFRP)	Sq. Ft.	249
Counterweight Pit Cleaning	Each	1

Notes:
Portions of this drawing are extracted from original drawings for this bridge. Details shown are provided to illustrate the work to be performed.
Elevations are based on existing drawings. Contractor shall verify existing elevations and dimensions prior to ordering any material.

LEGEND

- 6' —> Epoxy crack injection
- HL —> Hairline Crack - not to be sealed
- Carbon Fiber Reinforced Polymer (CFRP)

DESIGNED	A. HAMMAD
CHECKED	J. GRAINAWI
DRAWN	D. C. PATEL
CHECKED	A. HAMMAD

PB Americas, Inc.
230 WEST MONROE STREET,
SUITE 900
CHICAGO, IL. 60606

SHEET NO. 149	F.A.P RTE.	SECTION	COUNTY	TOTAL SHEETS	SHEET NO.
163 SHEETS	389	2424.2B-R	COOK	398	230
			CONTRACT NO. 60D61		
FED. ROAD DIST. NO. 7 ILLINOIS FED. AID PROJECT					

WEST COUNTERWEIGHT
PIT REPAIR (SOUTHWEST)
STRUCTURE NO. 016-2445