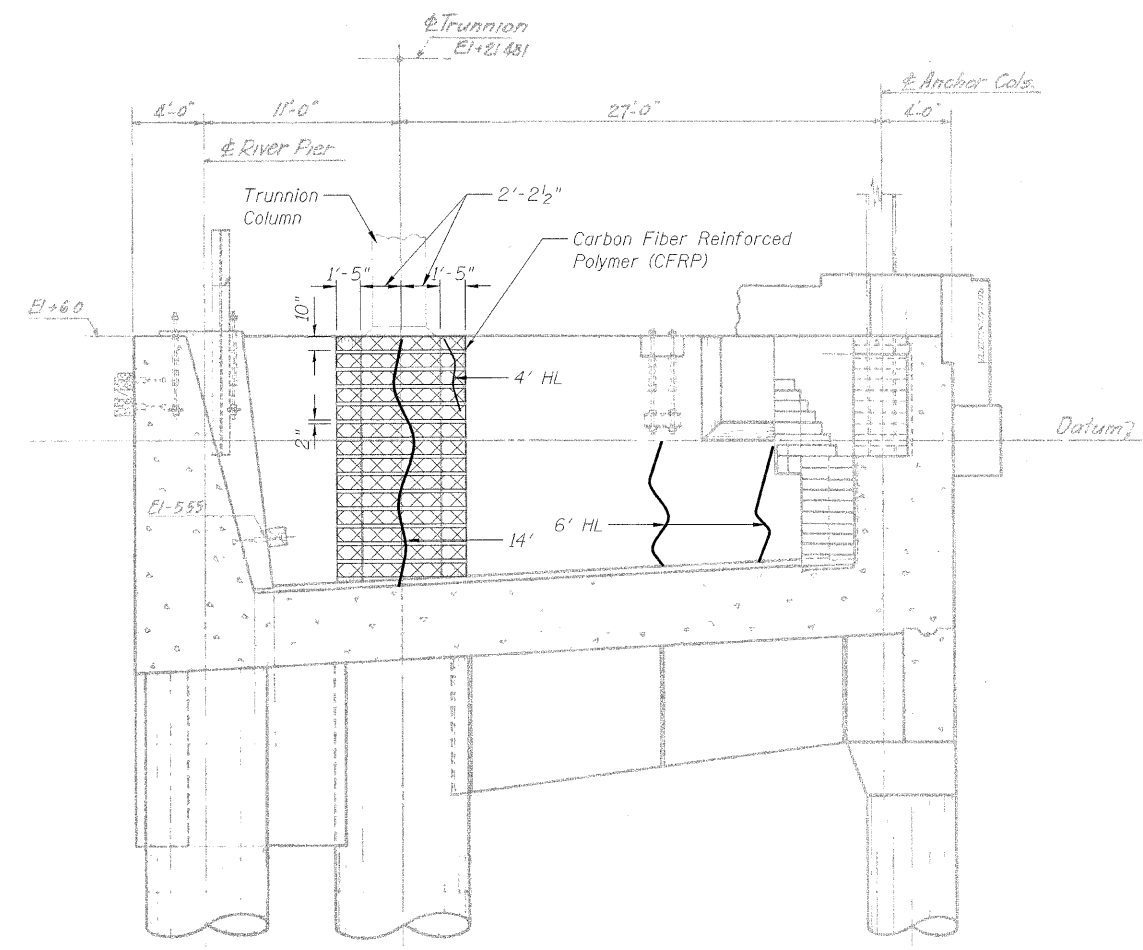
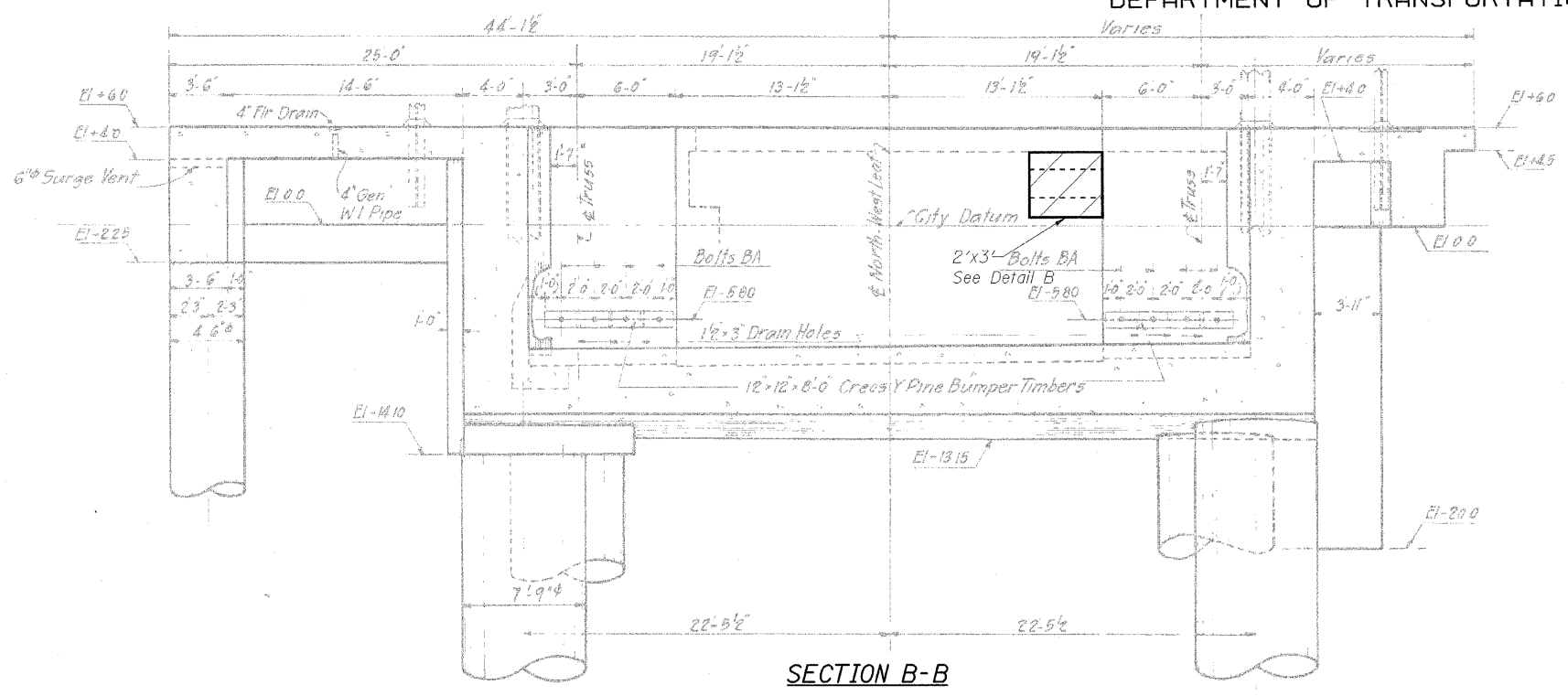


STATE OF ILLINOIS  
DEPARTMENT OF TRANSPORTATION



LEGEND

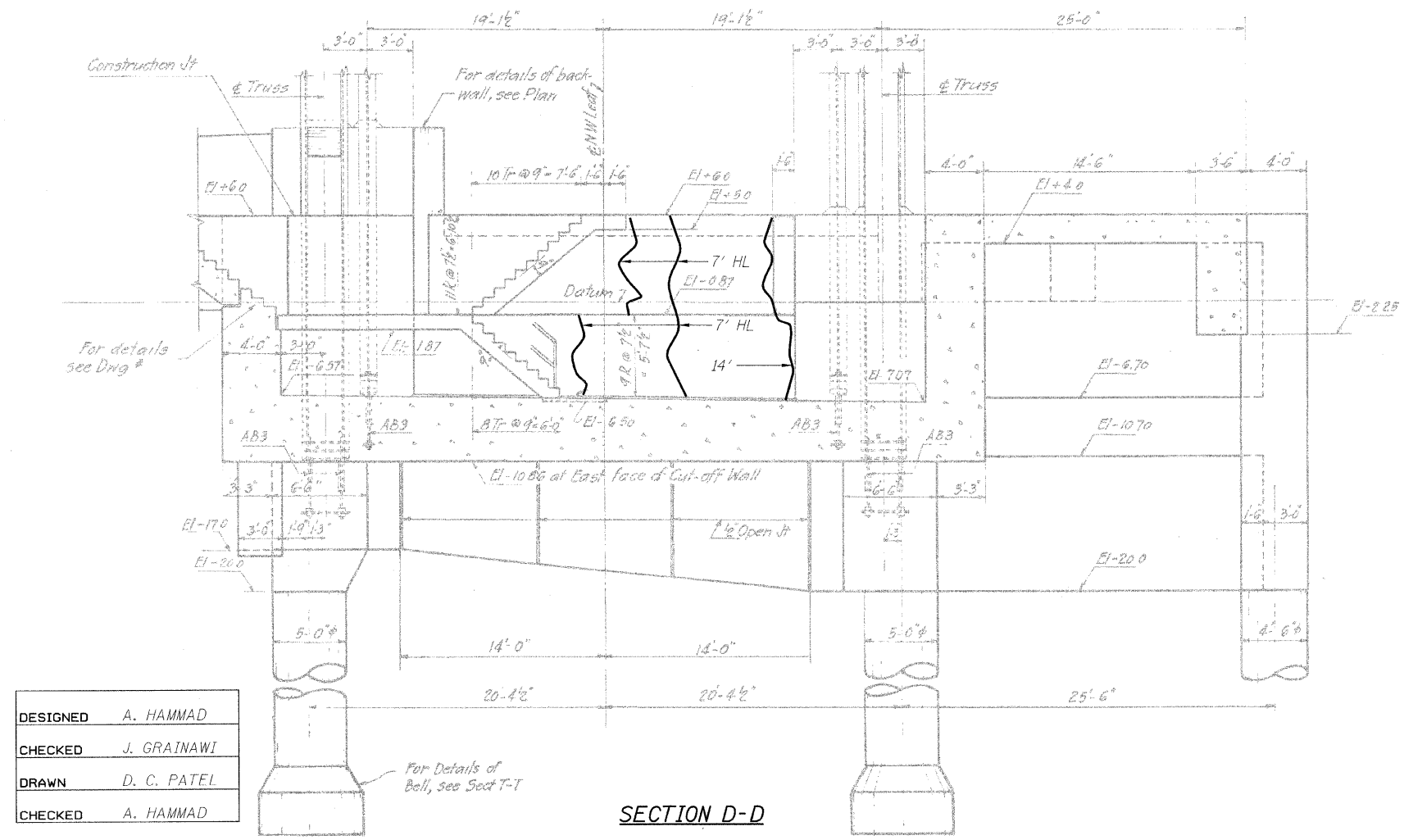
- Spalled Concrete with exposed rebar
- Epoxy crack injection
- Hairline Crack - not to be sealed
- Carbon Fiber Reinforced Polymer (CFRP)

BILL OF MATERIAL

Item	Unit	Quantity
Epoxy Crack Injection	Foot	38
Carbon Fiber Reinforced Polymer (CFRP)	Sq. Ft.	248.8
Structural Concrete Repair <= 5"	Sq. Ft.	6
Counterweight Pit Cleaning	Each	1

Notes:  
Portions of this drawing are extracted from original drawings for this bridge. Details shown are provided to illustrate the work to be performed.  
Elevations are based on existing drawings. Contractor shall verify existing elevations and dimensions prior to ordering any material. See sheet 150 of 163 for Detail A. See sheet 151 of 163 for Detail B.

WEST COUNTERWEIGHT  
PIT REPAIR (NORTHWEST)  
STRUCTURE NO. 016-2445



DESIGNED	A. HAMMAD
CHECKED	J. GRAINAWI
DRAWN	D. C. PATEL
CHECKED	A. HAMMAD

**PB Americas, Inc.**  
230 WEST MONROE STREET,  
SUITE 900  
CHICAGO, IL 60606

SHEET NO. 155  
163 SHEETS

F.A.P. RTE.	SECTION	COUNTY	TOTAL SHEETS	SHEET NO.
389	2424.2B-R	COOK	398	236
CONTRACT NO. 60D61				
FED. ROAD DIST. NO. 7 ILLINOIS FED. AID PROJECT				

T:\16863\Structural\Cadd\Pre-final\EB\_Plans\0162445-60D61-CPR-155.dgn  
07-MAY-2009