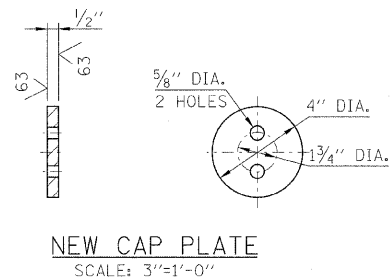


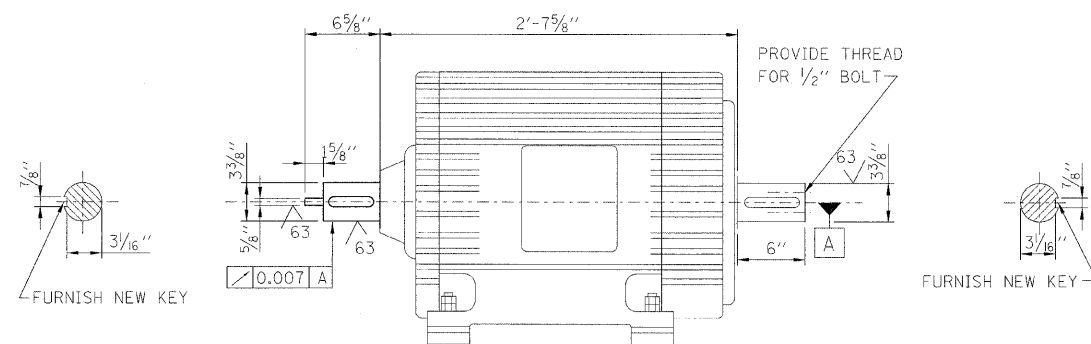
FULL DEPTH, SPUR GEAR - 5.667 P.D., 3 D.P., 17 TEETH - 14 1/2° INVOLUTE

NEW MOTOR PINION
SCALE: 3"=1'-0"

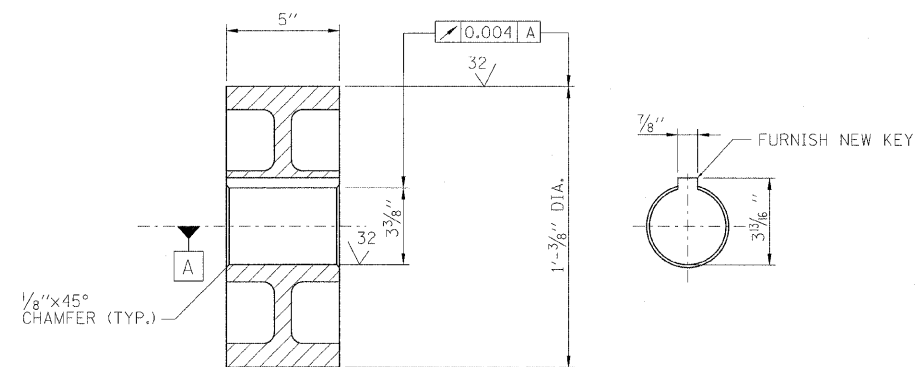


NEW CAP PLATE
SCALE: 3"=1'-0"

QTY.	ITEM	DESCRIPTION
8	NEW MOTOR PINION	ASTM A668 CLASS J FORGING, SAE 41L40 HEAT TREATED (QUENCHED, TEMPERED AND STRESS-RELIEVED)
8	NEW MOTOR BRAKE WHEEL	ASTM A732 GRADE 5N CAST STEEL WITH A CVN IMPACT TOUGHNESS OF 25 FT-LBS AT 40°F
8	NEW ELECTRIC MOTOR	CAST ALUMINUM
8	NEW CAP PLATE	ASTM A668, CLASS D



NEW ELECTRIC MOTOR WITH EXTENDED SHAFT
SCALE: 1/2"=1'-0"



NEW MOTOR BRAKE WHEEL
SCALE: 3"=1'-0"

NOTES:

- FOR GENERAL NOTES, SEE SHEET, M-01
- CONTRACTOR SHALL VERIFY ALL DIMENSIONS.
- WORK THIS DWG, WITH SHEET M-05.
- FOR ADDITIONAL NOTES ON BRAKE REPLACEMENT, SEE SHEET M-05.
- NEW BRAKE WHEELS SHALL BE PROVIDED WITH NEW KEYS.
- MACHINERY SUPPORTS ARE DETAILED FOR THE COMPONENTS SPECIFIED WITH 1/2" NOMINAL SHIMS PROVIDED BETWEEN MACHINERY AND SUPPORTS.
- THE PITCH LINE MUST BE SCRIBED ON BOTH ENDS OF ALL MOTOR PINION TEETH. SCRIBED LINE TO BE V-GROOVE, MINIMUM OF 0.02" DEEP.

PB Americas, Inc.
230 WEST MONROE STREET,
SUITE 900
CHICAGO, IL. 60606

USER NAME = sharma
FILE NAME = D168d61-sht:neo-06.dgn
PLOT SCALE = NONE
PLOT DATE = 5/7/2009

DESIGNED - V. LEVIT
DRAWN - V. LEVIT
CHECKED - D. NYARKO
DATE - MAY 8, 2009

REVISED -
REVISED -
REVISED -
REVISED -

**STATE OF ILLINOIS
DEPARTMENT OF TRANSPORTATION**

OPERATING MACHINERY DETAILS - II

SCALE: AS SHOWN SHEET NO. M-06 OF M-27 SHEETS STA. 379+06.09 TO STA. 382+45.28

F.A.P. RTE.	SECTION	COUNTY	TOTAL SHEETS	SHEET NO.
389	2424-2B-R	COOK	398	250
CONTRACT NO. 60D61				
FED. ROAD DIST. NO. 1 ILLINOIS FED. AID PROJECT				