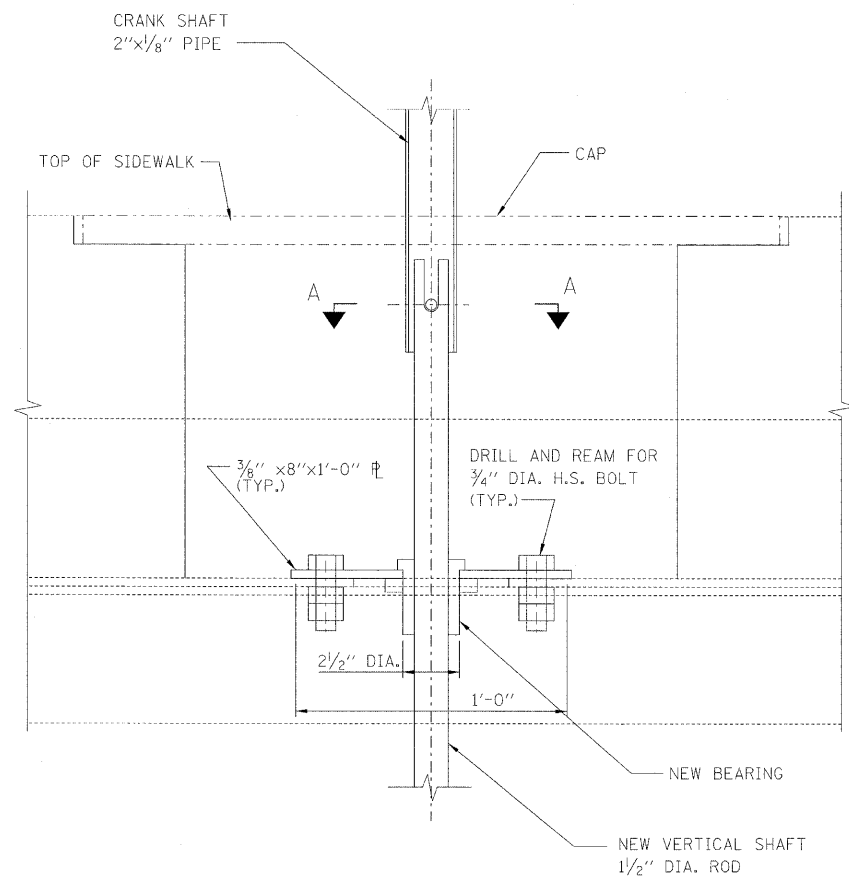
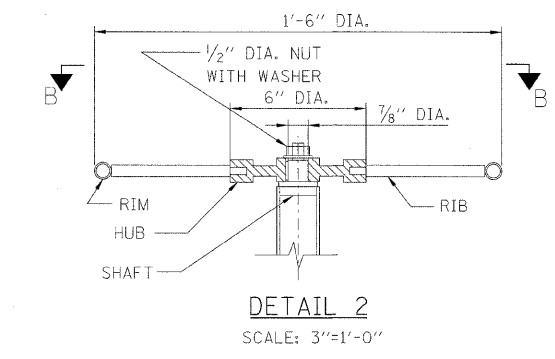


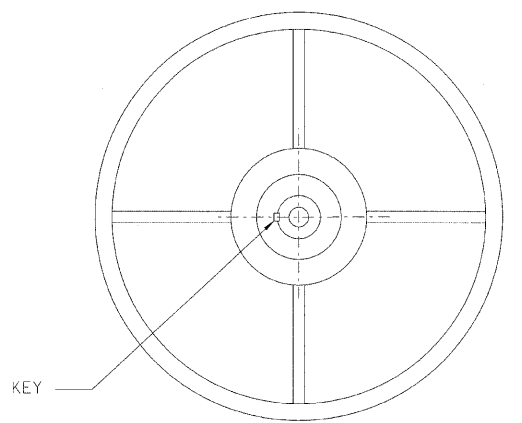
MANUAL HAND CRANK SHAFT ASSEMBLY (4 REQUIRED)
SCALE: 1/2"=1'-0"



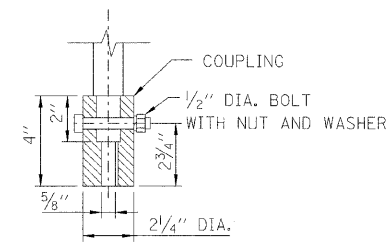
DETAIL 1
SCALE: 3"=1'-0"



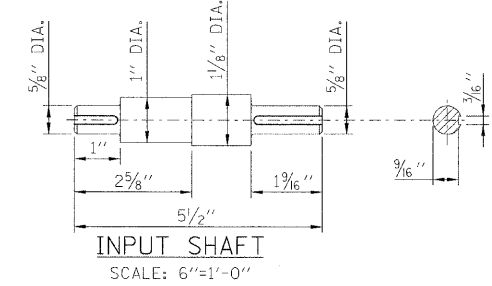
DETAIL 2
SCALE: 3"=1'-0"



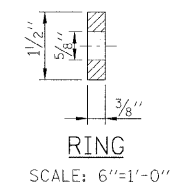
SECTION B-B
SCALE: 3"=1'-0"



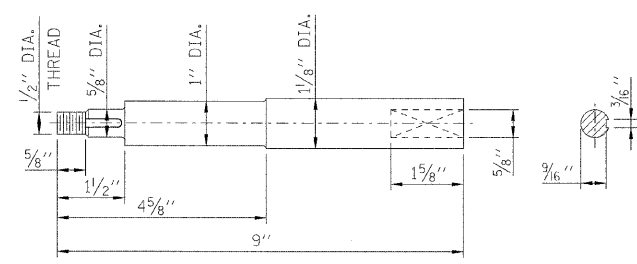
DETAIL 3
SCALE: 3"=1'-0"



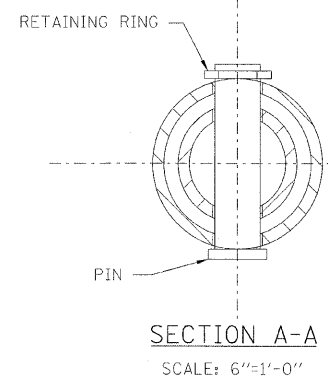
INPUT SHAFT
SCALE: 6"=1'-0"



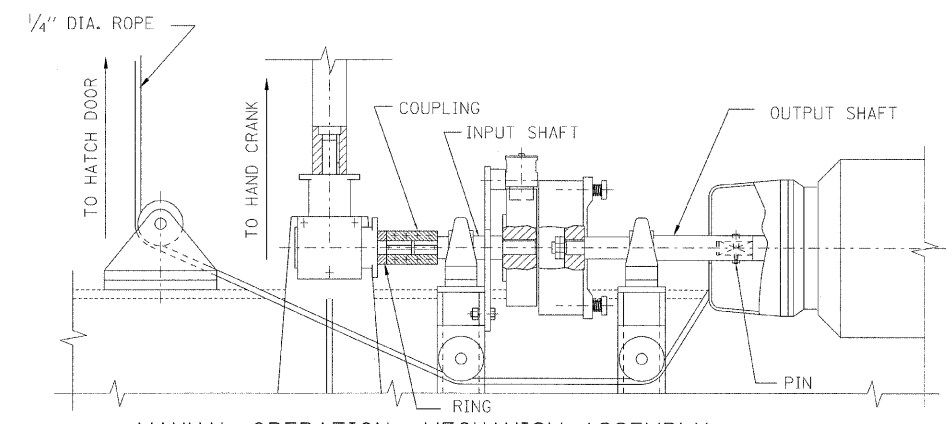
RING
SCALE: 6"=1'-0"



OUTPUT SHAFT
SCALE: 6"=1'-0"



SECTION A-A
SCALE: 6"=1'-0"



MANUAL OPERATION MECHANISM ASSEMBLY (4 REQUIRED)
SCALE: 3"=1'-0"

QTY.	ITEM	DESCRIPTION
MANUAL CRANK SHAFT ASSEMBLY		
4	CRANK SHAFT, 2"x1/8" PIPE	ASTM A668
4	VERTICAL SHAFT, 1/2" DIA. ROD	FORGED STEEL
4	CAP, 1"x 2 1/2"x 2 1/2" PL	ASTM A668
16	3/4" H.S. BOLT	ASTM A325
4	3/8"x8"x1'-0" STEEL PLATE	ASTM A709, GRADE 50
4	BEARING, 3"x2 1/2" DIA.	FORGED STEEL
4	HUB, 1"x6" DIA.	ASTM A668
16	RIB, 6"x1/2" DIA.	ASTM A668
4	RIM, 3/4"x1/8"x4'-6" PIPE	ASTM A668
4	SHAFT, 2 3/8"x 1/2" DIA.	FORGED STEEL
4	1/2" DIA. NUT AND WASHER	NUT - ASTM A563 WASHER - ASTM F463
4	COUPLING-4"x5/8" DIA.	FORGED STEEL
MANUAL OPERATION ASSEMBLY		
4	INPUT SHAFT-4 3/16"x 1/8" DIA.	FORGED STEEL
4	OUTPUT SHAFT-5 5/16"x 1/8" DIA.	FORGED STEEL
4	RING-3/8 "x1 1/2" DIA.	FORGED STEEL

- NOTES:**
- FOR GENERAL NOTES, SEE SHEET M-01.
 - WORK THIS DRAWING WITH SHEETS M-11 THRU M-17.
 - CONTRACTOR SHALL VERIFY ALL DIMENSIONS.
 - KEY FOR INPUT AND OUTPUT SHAFTS ARE NOT SHOWN. CONTRACTOR TO PROVIDE KEYS AND KEYWAYS PER ANSI STANDARD.