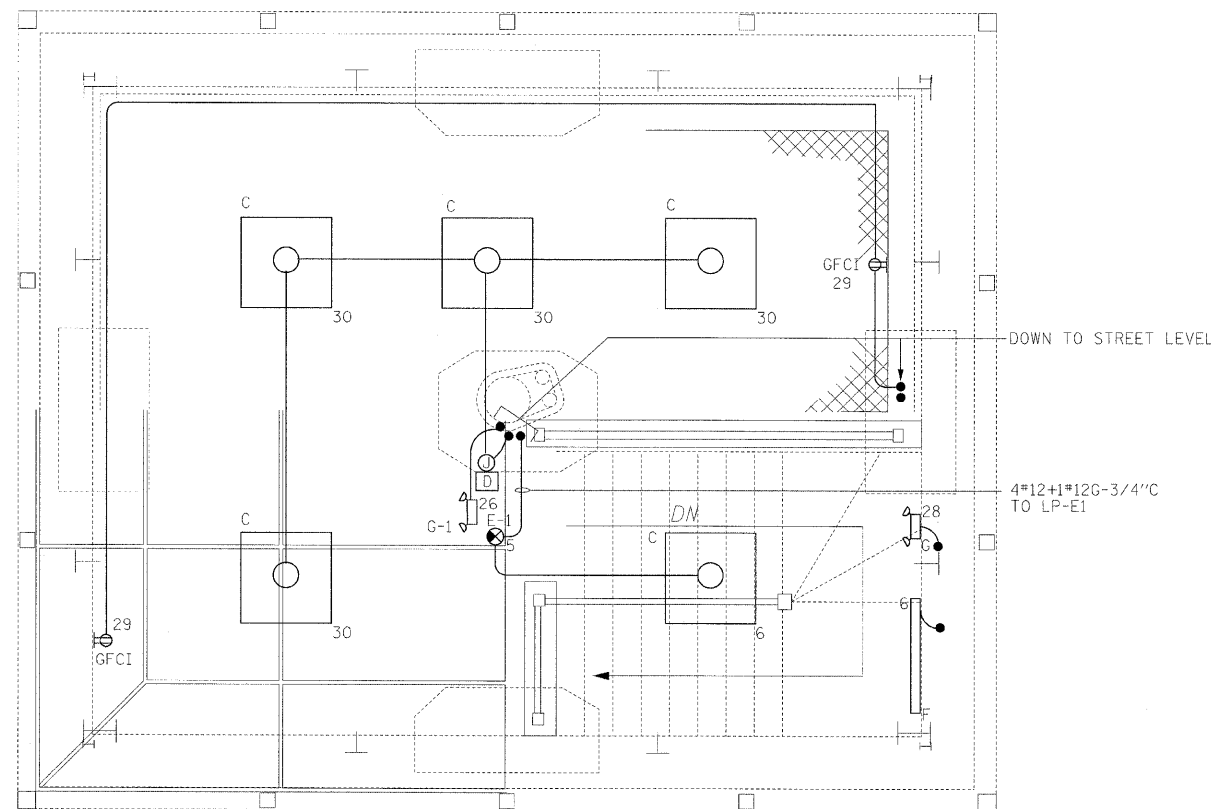




- NOTES:**
1. FOR ELECTRICAL SYMBOLS SEE DWGS. E-04 & E-05.
 2. FOR ABBREVIATIONS SEE DWG E-06.
 3. FOR GENERAL NOTES SEE DWGS. E-02 & E-03.
 4. FOR PANEL SCHEDULES SEE DWG E-64.
 5. FOR LIGHT FIXTURES DESCRIPTIONS SEE ELECTRICAL SPECIFICATIONS.



**EAST SIDE OPERATOR'S ROOM
PLAN**
1/2"=1'-0"

PB Americas, Inc.
230 WEST MONROE STREET,
SUITE 900
CHICAGO, IL. 60606

USER NAME = sharma
FILE NAME = D:\60d61-shr\elo-34.dgn
PLOT SCALE = NONE
PLOT DATE = 5/7/2009

DESIGNED - R. GODULIAS
DRAWN - S. SHARMA
CHECKED - M. INTATANO
DATE - MAY 8, 2009

REVISED -
REVISED -
REVISED -
REVISED -

**STATE OF ILLINOIS
DEPARTMENT OF TRANSPORTATION**

**LIGHTING AND RECEPTACLE PLAN
EAST SIDE OPERATOR'S ROOM**

SCALE: AS SHOWN SHEET NO. E-34 OF E-125 SHEETS STA. 379+06.09 TO STA. 382+45.28

F.A.P. RTE.	SECTION	COUNTY	TOTAL SHEETS	SHEET NO.
389	2424-2B-R	COOK	398	305
FED. ROAD DIST. NO. 1				ILLINOIS FED. AID PROJECT

CONTRACT NO. 60D61