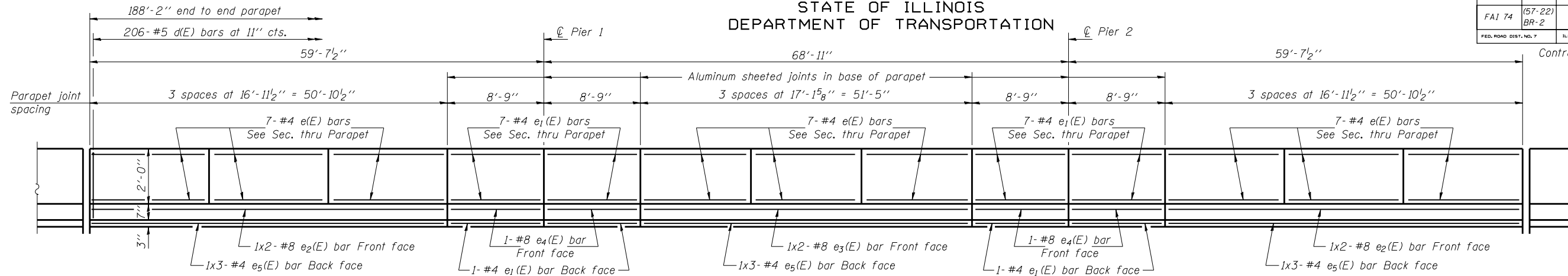


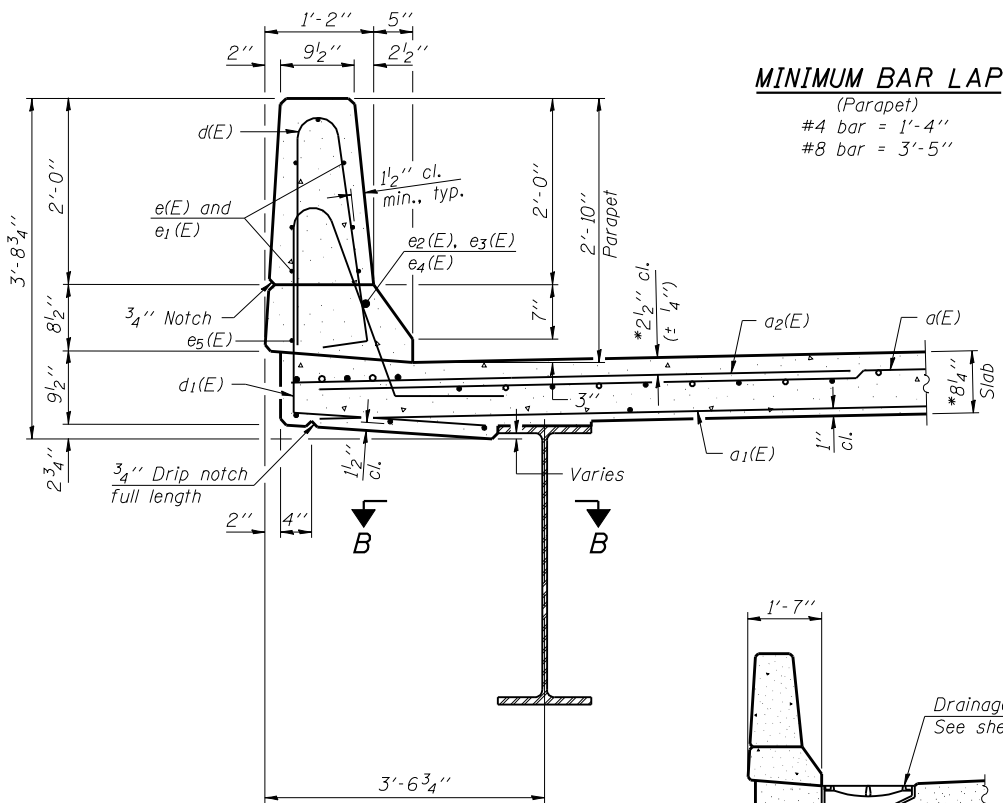
STATE OF ILLINOIS
DEPARTMENT OF TRANSPORTATION

ROUTE NO.	SECTION	COUNTY	TOTAL SHEETS	SHEET NO.	SHEET NO. 9 23 SHEETS
FAI 74	(57-22) BR-2	McLEAN	42	20	
FED. ROAD DIST. NO. 7		ILLINOIS	FED. AID PROJECT		

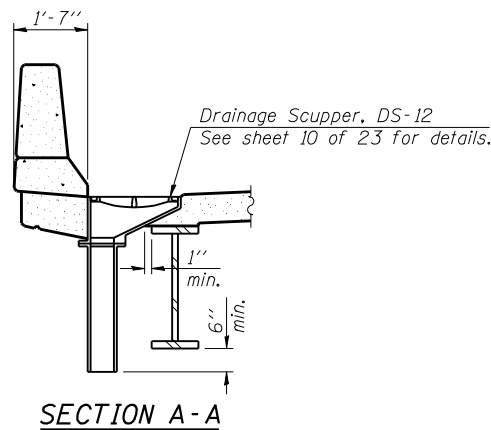
Contract No. 70671



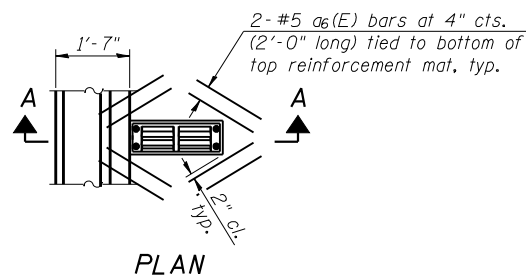
INSIDE ELEVATION OF PARAPET



SECTION THRU PARAPET
*Prior to Grinding

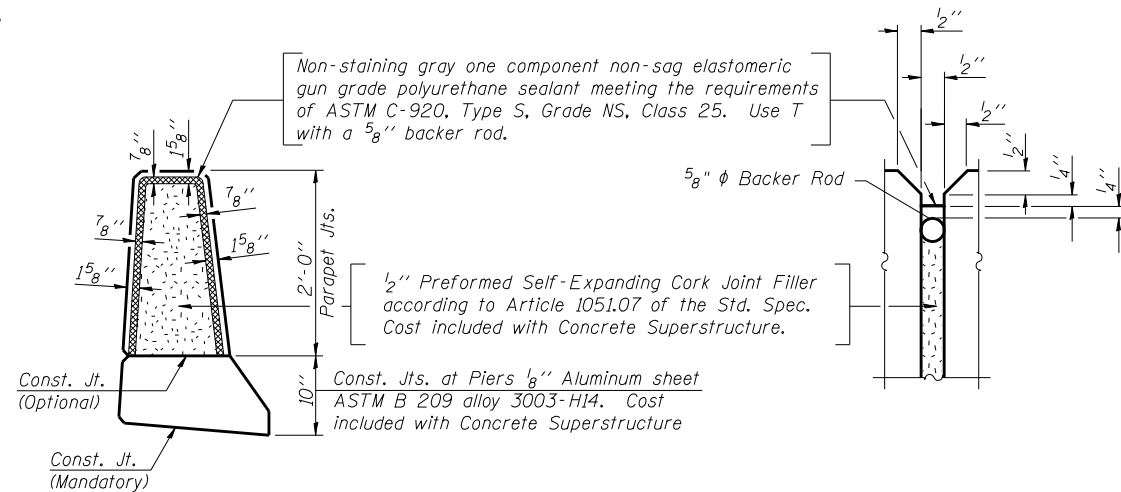


SECTION A-A



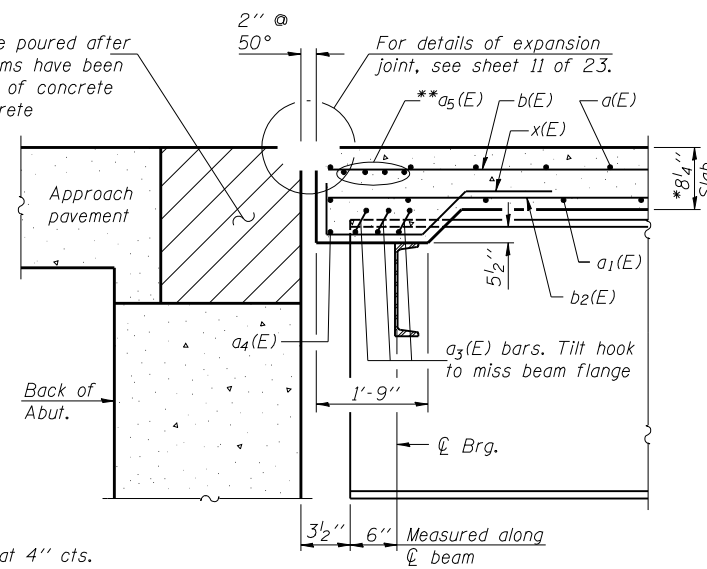
PLAN

Note:
Cut longitudinal reinforcement to clear drainage scuppers.

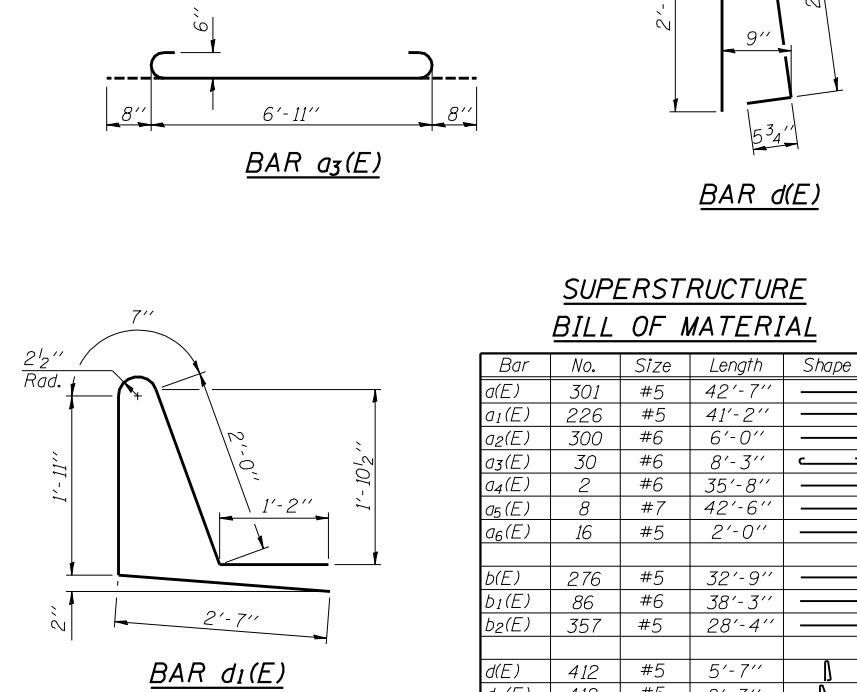


PARAPET JOINT DETAILS

Hatched area to be poured after superstructure forms have been removed. Quantity of concrete included with Concrete Superstructure.



SECTION A-A



SUPERSTRUCTURE
BILL OF MATERIAL

Bar	No.	Size	Length	Shape
a(E)	301	#5	42'-7"	—
a1(E)	226	#5	41'-2"	—
a2(E)	300	#6	6'-0"	—
a3(E)	30	#6	8'-3"	—
a4(E)	2	#6	35'-8"	—
a5(E)	8	#7	42'-6"	—
a6(E)	16	#5	2'-0"	—
b(E)	276	#5	32'-9"	—
b1(E)	86	#6	38'-3"	—
b2(E)	357	#5	28'-4"	—
d(E)	412	#5	5'-7"	—
d1(E)	412	#5	8'-3"	—
e(E)	126	#4	16'-8"	—
e1(E)	64	#4	8'-5"	—
e2(E)	8	#8	27'-0"	—
e3(E)	4	#8	27'-3"	—
e4(E)	8	#8	8'-5"	—
e5(E)	18	#4	18'-2"	—
x(E)	70	#5	5'-11"	—
Reinforcement Bars, Epoxy Coated		Pound	61,310	
Concrete Superstructure		Cu. Yds.	260.0	

Bars indicated thus 1 x 2-#5 etc. indicates 1 line of bars with 2 lengths per line.

SUPERSTRUCTURE DETAILS
F.A.I. RT. 74 - SEC. (57-22)BR-2
McLEAN COUNTY
STATION 1039+00
STRUCTURE NO. 057-0126 (W.B.)

DESIGNED	Dewey H. Coultas
CHECKED	Chi-Cheung Chau
DRAWN	h.t. duong
CHECKED	DHC/CCC

EXAMINED	Thomas J. Domagala	AUGUST 2, 2007
PASSED	Ralph E. Anderson	