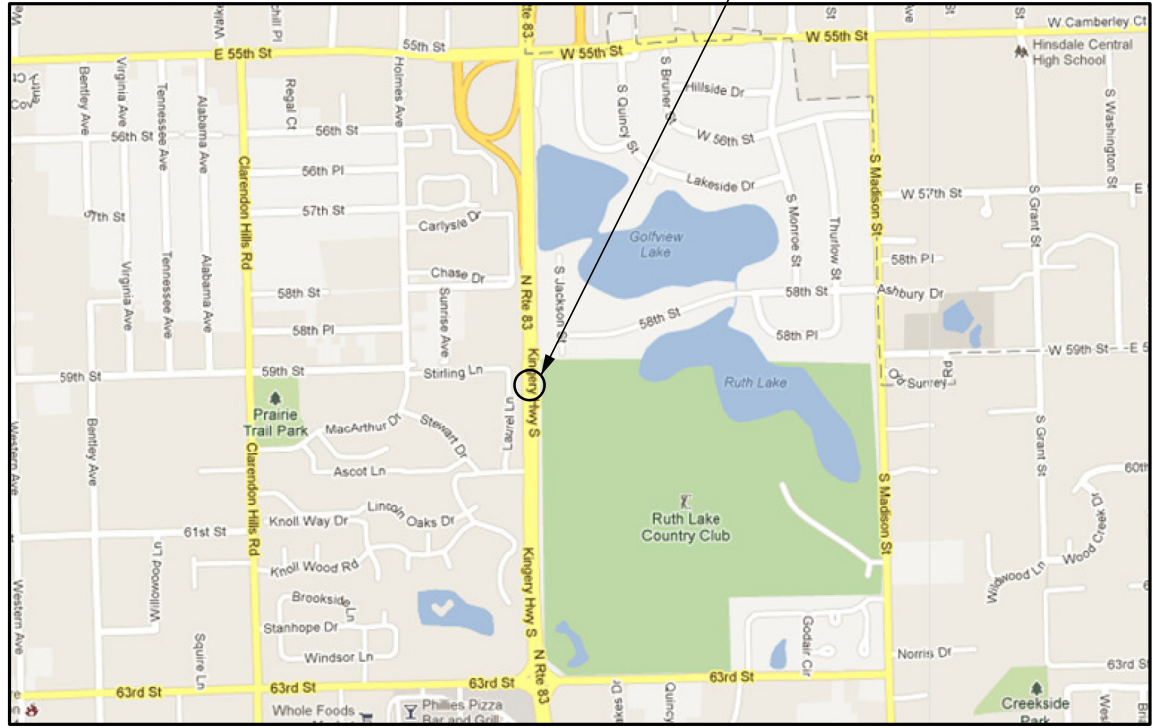
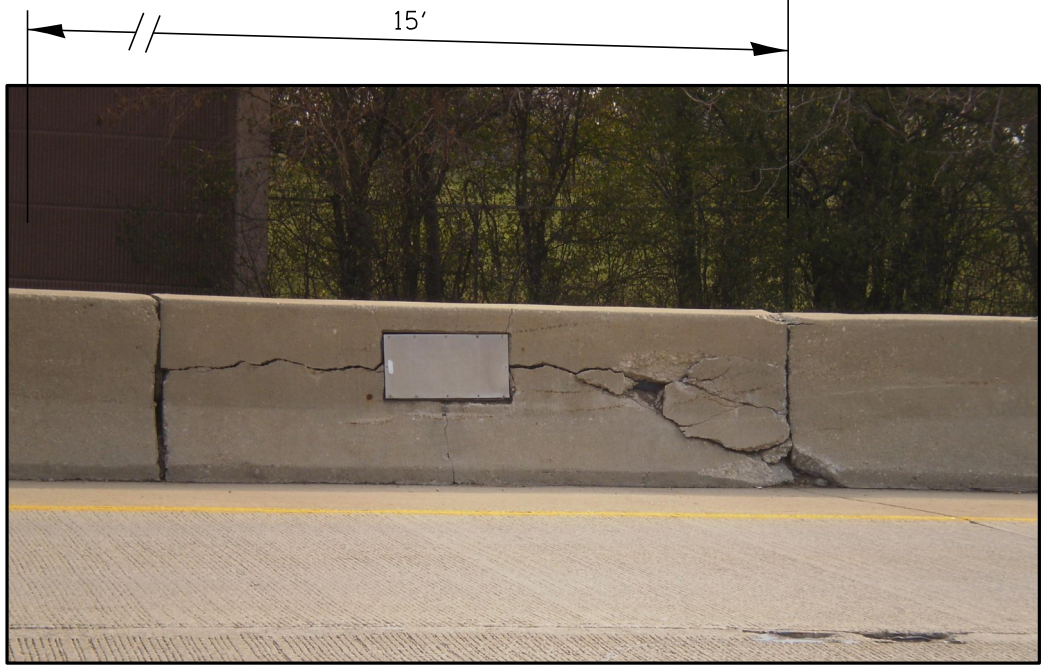
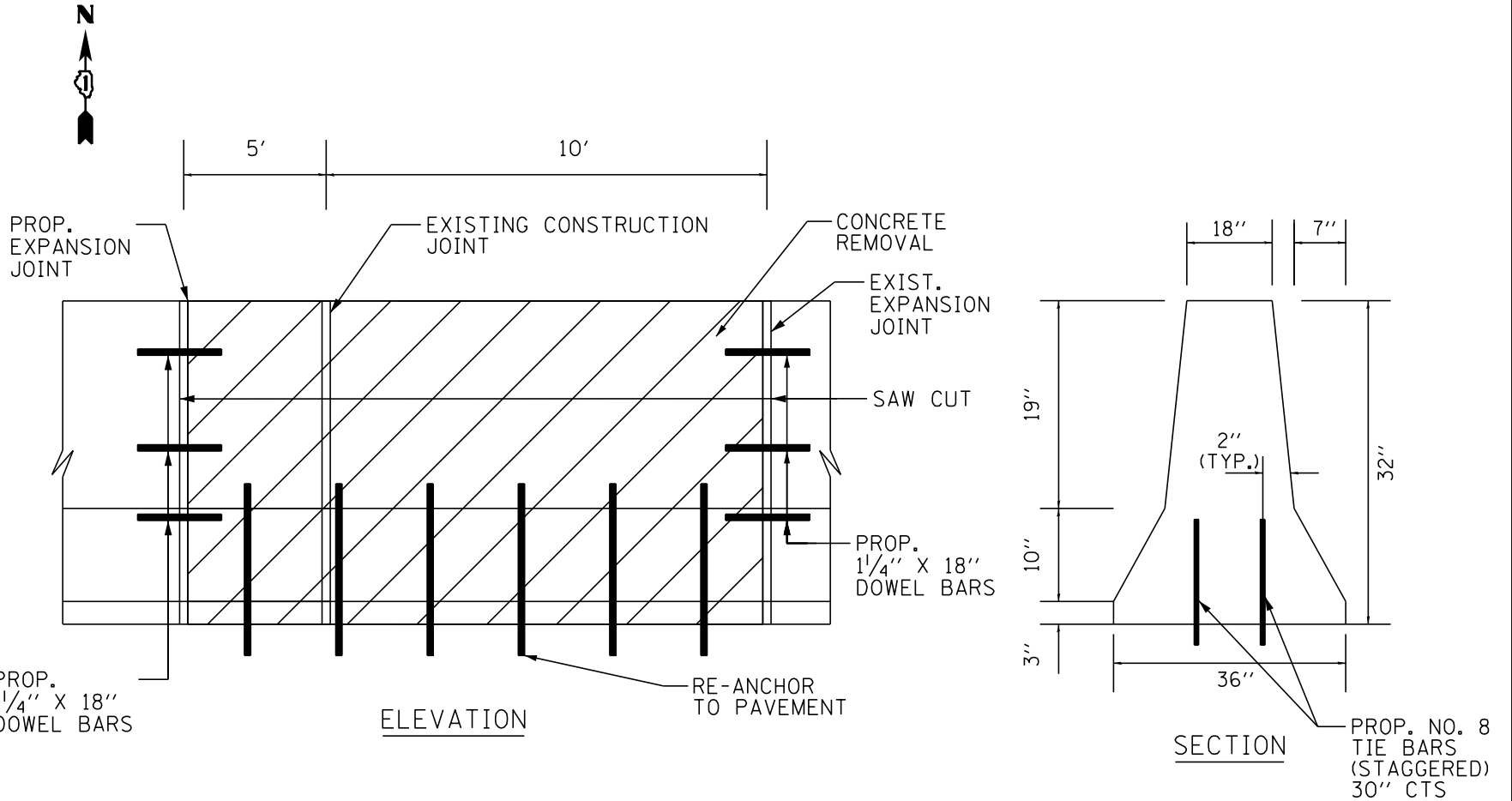


IL 83 (KINGERY HWY), SB  
NORTH OF KNOLLWOOD RD, WEST FACE

R11E



VILLAGE OF WILLOWBROOK  
DOWNERS GROVE TOWNSHIP  
DUPAGE COUNTY



FULL DEPTH REPAIR  
REPLACE 15' OF BARRIER WALL  
FOR MORE DETAILS SEE SHEET 24

BILL OF MATERIALS

ITEM	UNIT	QUANTITY
CONCRETE REMOVAL	CU YD	4
CONCRETE STRUCTURE	CU YD	4
DOWEL BARS	EACH	6
TIE BARS	EACH	8
SAW CUTS	FOOT	6
PROTECTIVE COAT	SQ YD	16

**NOTES:**  
 SAW CUTS SHALL MEET EXISTING PCC PAVEMENT TRANSVERSE JOINTS.  
 CONCRETE REMOVAL SHALL EXTEND A MINIMUM OF 6" PAST DAMAGE OR TO JOINT IF WITHIN 2'-0".  
 EXISTING BARS TO BE CLEANED, STRAIGHTENED, AND INCORPORATED IN NEW CONSTRUCTION.  
 BARS TO BE EXPOXY GROUTED ACCORDING TO ARTICLE 584 OF THE STANDARD SPECIFICATIONS.

**TRAFFIC DATA:**  
 2011 ADT = 66,400  
 SPEED LIMIT = 40-55 MPH