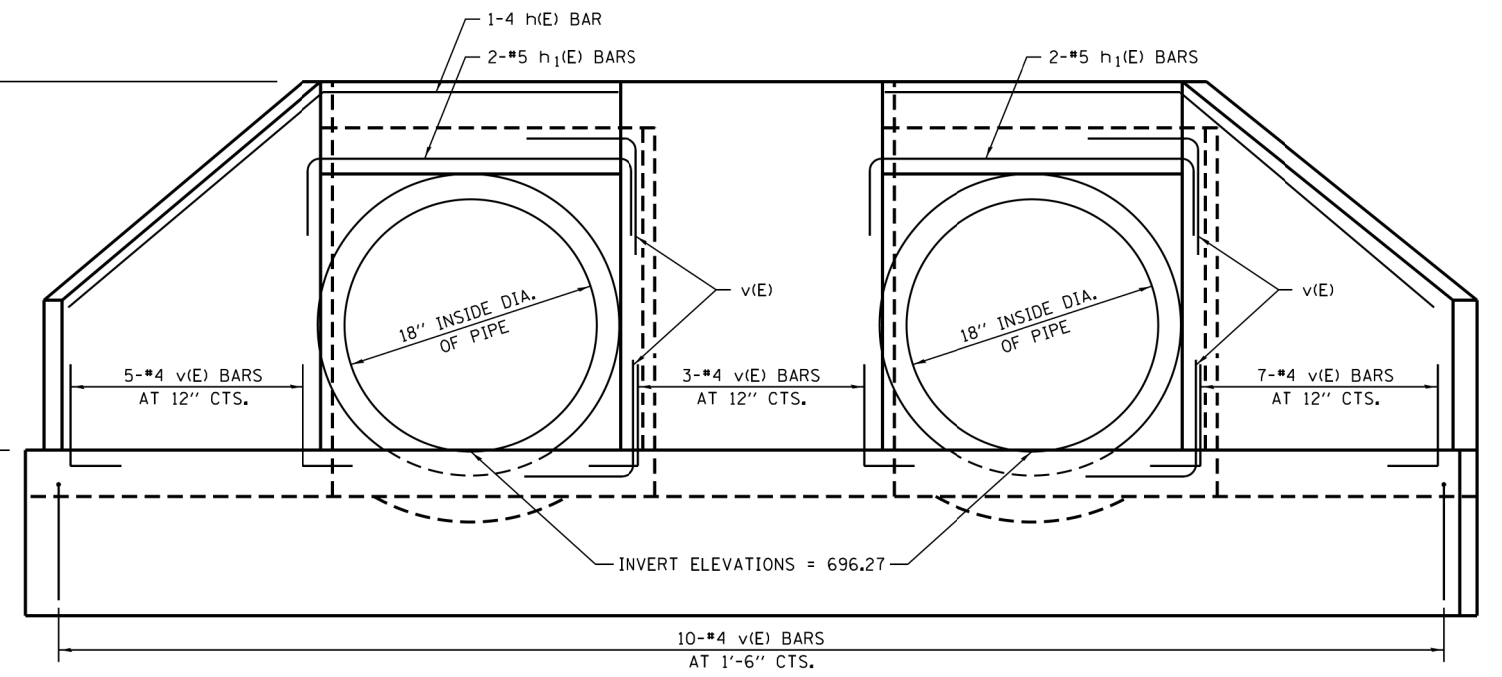
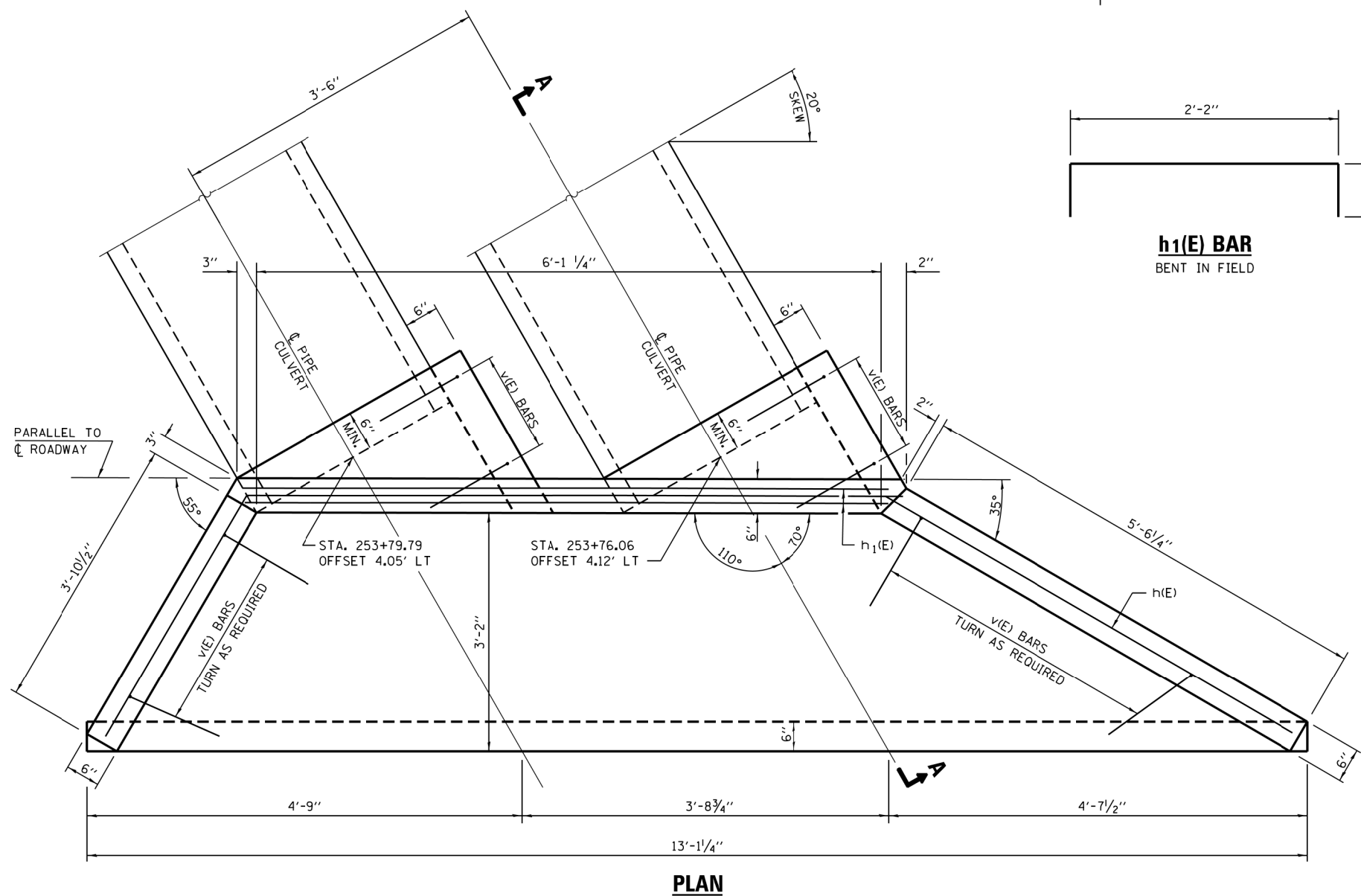


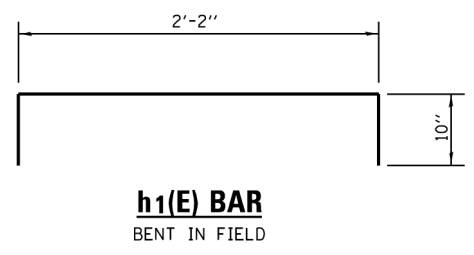
**SECTION A-A**



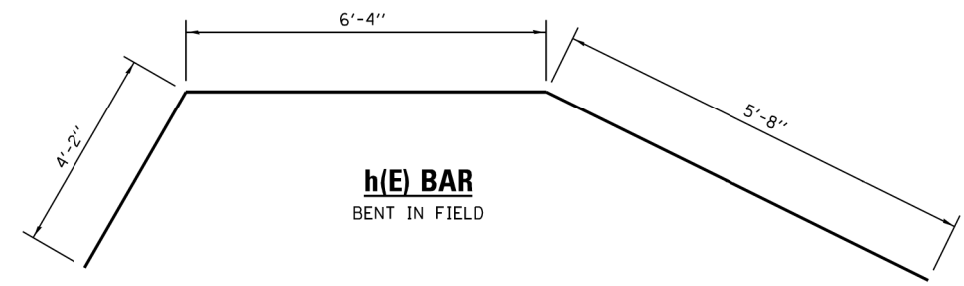
**END VIEW**



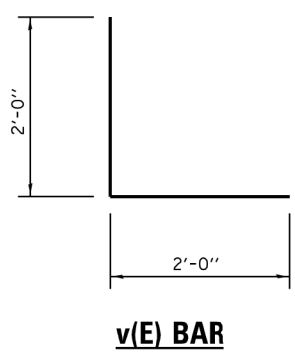
**PLAN**



**h1(E) BAR  
BENT IN FIELD**



**h(E) BAR  
BENT IN FIELD**



**v(E) BAR**

**BILL OF MATERIAL \***

BAR	NO.	SIZE	LENGTH	SHAPE	
h(E)	1	#4	16'-2"		
h1(E)	4	#5	3'-10"		
v(E)	37	#4	4'-0"		
REINFORCEMENT BARS				POUND	130
CONCRETE STRUCTURES				CU. YD.	1.7

\* FOR INFORMATION ONLY. COST OF REINFORCEMENT BARS, CONCRETE STRUCTURE AND ANY OTHER REQUIRED MATERIAL AND LABOR WILL BE INCLUDED IN THE PAYMENT IN THE CONTRACT UNIT PRICE FOR CAST-IN-PLACE REINFORCED CONCRETE END SECTIONS 2-18" (SPECIAL).

REINFORCEMENT BARS DESIGNATED (E) SHALL BE EPOXY COATED.

FILE NAME = SA\JUL16300-6399\6346\051\Micro\CA00D\_Sheet\0160N52-sh1-CULVERT.dgn



USER NAME = dennisw  
 MODEL NAME = Default  
 PLOT SCALE = 2.0000' / in.  
 PLOT DATE = 1/4/2013

DESIGNED - RRD  
 DRAWN - BJJ  
 CHECKED - AJS  
 DATE - 01-03-13

REVISED -  
 REVISED -  
 REVISED -  
 REVISED -

**STATE OF ILLINOIS  
 DEPARTMENT OF TRANSPORTATION**

**REINFORCED CONCRETE END SECTIONS FOR PIPE CULVERTS**

SCALE: SHEET 1 OF 1 SHEETS STA. TO STA.

F.A.P. RTE.	SECTION	COUNTY	TOTAL SHEETS	SHEET NO.
344	544-RS-4	DUPAGE	53	26
CONTRACT NO. 60N52				ILLINOIS FED. AID PROJECT