

F.A.P. RTE.	SECTION	COUNTY	TOTAL SHEETS	SHEET NO.
352	2R-1-RS-1	LAKE	24	1
ILLINOIS			CONTRACT NO. 60P11	

STATE OF ILLINOIS
DEPARTMENT OF TRANSPORTATION
DIVISION OF HIGHWAYS

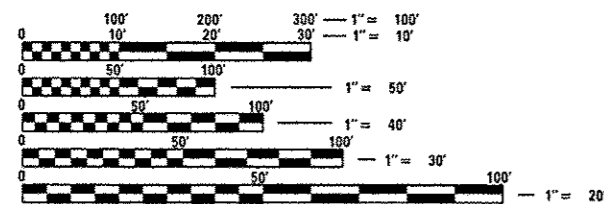
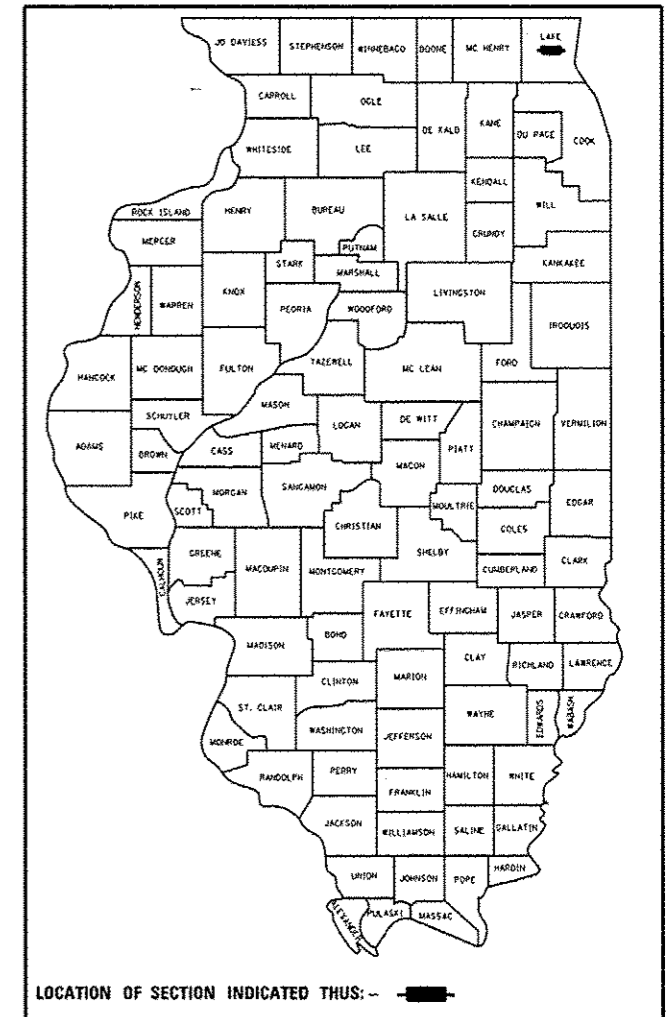
**PROPOSED
HIGHWAY PLANS**

FAP 352: IL 137
BUTTERFIELD RD. TO IL 21 (MILWAUKEE AVE.)
SECTION 2R-1-RS-1
RESURFACING (3P)
LAKE COUNTY
C-91-465-11

FOR INDEX OF SHEETS, SEE SHEET NO. 2

PROJECT IS LOCATED IN
THE VILLAGE OF LIBERTYVILLE

D-91-465-11

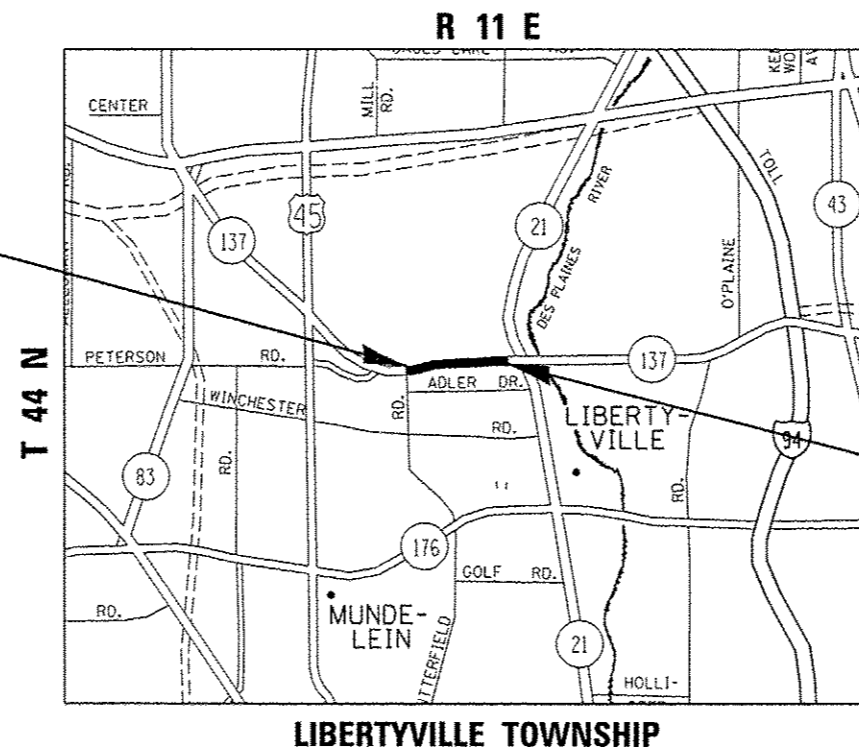


FULL SIZE PLANS HAVE BEEN PREPARED USING STANDARD ENGINEERING SCALES. REDUCED SIZED PLANS WILL NOT CONFORM TO STANDARD SCALES. IN MAKING MEASUREMENTS ON REDUCED PLANS, THE ABOVE SCALES MAY BE USED.

J.U.L.I.E.
JOINT UTILITY LOCATION INFORMATION FOR EXCAVATION
1-800-892-0123
OR 811

PROJECT ENGINEER: DAN WILGREEN (847) 705-4240
PROJECT MANAGER: KEN ENG (847) 705-4247

CONTRACT NO. 60P11



PROJECT BEGINS:
STATION 4+74

TRAFFIC DATA:
SPEED LIMIT = 40 - 45 MPH
2011 ADT = 29,900

PROJECT ENDS:
STATION 63+64

GROSS & NET LENGTH = 5,890 FEET = 1.12 MILES

STATE OF ILLINOIS
DEPARTMENT OF TRANSPORTATION
DIVISION OF HIGHWAYS

SUBMITTED JUNE 9 2014

John D. Balanzelli, P.E.
DEPUTY DIRECTOR OF HIGHWAYS, REGION ENGINEER

July 18 2014
John D. Balanzelli, P.E.
ENGINEER OF DESIGN AND ENVIRONMENT

July 18 2014
Omer Osman, P.E.
DIRECTOR OF HIGHWAYS, CHIEF ENGINEER

PRINTED BY THE AUTHORITY
OF THE STATE OF ILLINOIS