

F.A.P. RTE.	SECTION	COUNTY	TOTAL SHEETS	SHEET NO.
22	15BR-1	WHITESIDE	146	1
		ILLINOIS	CONTRACT NO. 64F19	

STATE OF ILLINOIS
DEPARTMENT OF TRANSPORTATION
DIVISION OF HIGHWAYS

FOR INDEX OF SHEETS AND STATE STANDARDS, SEE SHEET NO. 2

**PROPOSED
HIGHWAY PLANS**

FAP ROUTE 22 (IL 78)
SECTION 15BR-1

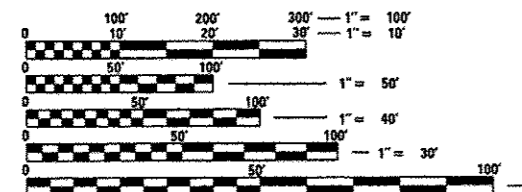
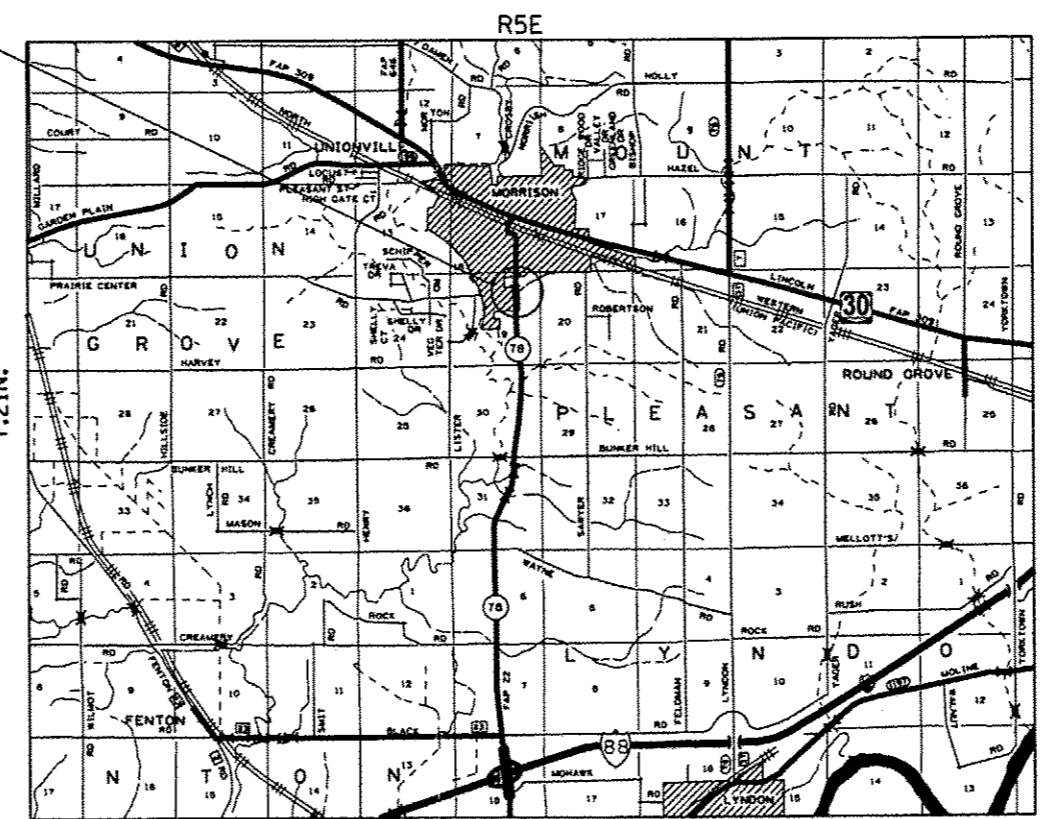
WHITESIDE COUNTY

D-92-082-09



SECTION BEGINS
STA. 901 + 97
IMPROVEMENT BEGINS
STA. 901 + 75
STA. 910 + 17.00 - SPECIAL BRIDGE DESIGN
3-SPAN 16" CONCRETE SLAB
97'-1 1/4" BK.-BK. ABUTS. LENGTH
PROPOSED S.N. 098-0118
EXISTING S.N. 098-0001
SECTION ENDS
STA. 917 + 80
IMPROVEMENT ENDS
STA. 917 + 80

C-92-178-12



FULL SIZE PLANS HAVE BEEN PREPARED USING STANDARD 20' ENGINEERING SCALES. REDUCED SIZED PLANS WILL NOT CONFORM TO STANDARD SCALES. IN MAKING MEASUREMENTS ON REDUCED PLANS, THE ABOVE SCALES MAY BE USED.

J.U.L.I.E.
JOINT UTILITY LOCATION INFORMATION FOR EXCAVATION
1-800-892-0123
OR 811

MOUNT PLEASANT TOWNSHIP, SECTION 19

PROJECT ENGINEER: MATTHEW FARMER
SQUAD LEADER: CHAD SPREEMAN (815)-284-5934

GROSS LENGTH OF PROJECT = 1583 FT. = 0.30 MILE
NET LENGTH OF PROJECT = 1583 FT. = 0.30 MILE

STATE OF ILLINOIS
DEPARTMENT OF TRANSPORTATION
DIVISION OF HIGHWAYS
SUBMITTED June 13TH 2014
Paul C. [Signature]
DEPUTY DIRECTOR OF HIGHWAYS, REGION ENGINEER
July 18 2014
John D. Buranzelli, P.E.
ENGINEER OF DESIGN AND ENVIRONMENT
July 18 2014
Omair Osman, P.E./G
DIRECTOR OF HIGHWAYS, CHIEF ENGINEER

**PRINTED BY THE AUTHORITY
OF THE STATE OF ILLINOIS**