

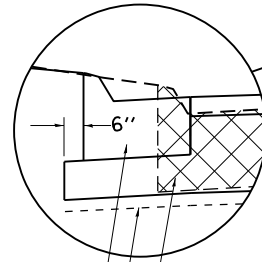
TYPICAL SECTIONS

MORRISON INSTITUTE OF TECHNOLOGY (MIT) ENTRANCE

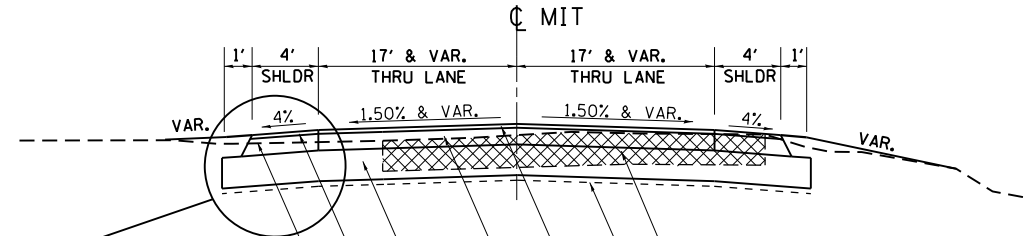
STA 99+02.24 - STA 99+87.48

MORRISON INSTITUTE OF TECHNOLOGY (MIT) ENTRANCE

LT STA 99+02.24 - STA 99+34.93
RT STA 99+02.24 - STA 99+25.78



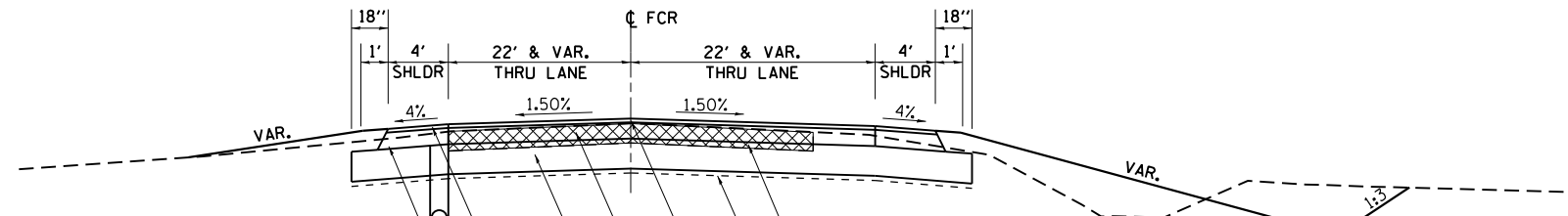
COMBINATION CONCRETE CURB AND GUTTER, TYPE M-4.12
GEOTECHNICAL REINFORCEMENT
AGGREGATE SUBGRADE IMPROVEMENT 12" (SEE SCHEDULE)



EXISTING PAVEMENT **
GEOTECHNICAL REINFORCEMENT
1 1/2" HOT-MIX ASPHALT SURFACE COURSE, MIX "C", N50 *
6 1/2" HOT-MIX ASPHALT BINDER COURSE, IL-19.0, N50 * (2 LIFTS)
AGGREGATE SUBGRADE IMPROVEMENT 12" (SEE SCHEDULE)
1 1/2" HOT-MIX ASPHALT SURFACE COURSE, MIX "C", N50 *
HOT-MIX ASPHALT SHOULDERS, 6 1/2" *

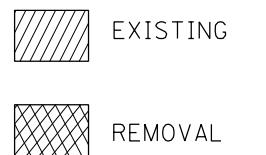
FRENCH CREEK ROAD (FCR)

STA 100+12.39 - STA 101+55.56



EXISTING PAVEMENT **
GEOTECHNICAL REINFORCEMENT
1 1/2" HOT-MIX ASPHALT SURFACE COURSE, MIX "C", N50 *
6 1/2" HOT-MIX ASPHALT BINDER COURSE, IL-19.0, N50 (2 LIFTS) *
AGGREGATE SUBGRADE IMPROVEMENT 12" (SEE SCHEDULE)
1 1/2" HOT-MIX ASPHALT SURFACE COURSE, MIX "C", N50 *
4" PIPE UNDERDRAIN (TYP)
HOT-MIX ASPHALT SHOULDERS, 6 1/2" *

LEGEND



NOTES

* 112 LB/SQ YD IN
** REMOVAL INCLUDED IN THE COST FOR EARTH EXCAVATION

FILE NAME =	USER NAME = Fasslermj	DESIGNED -	REVISED -	STATE OF ILLINOIS DEPARTMENT OF TRANSPORTATION	TYPICAL SECTIONS			F.A.P. RTE.	SECTION	COUNTY	TOTAL SHEETS	SHEET NO.
ce:\pwork\pwork\pwork\fasslermj\0149594\0208209-shit-typical.dgn		DRAWN -	REVISED -					22	15BR-1	WHITESIDE	146	13
PLOT SCALE = 100.0000' / 1in.		CHECKED -	REVISED -		SCALE: _____ SHEET NO. ___ OF ___ SHEETS STA. _____ TO STA. _____			CONTRACT NO. 64F19				
PLOT DATE = Fri Jun 13 08:45:00 2014		DATE -	REVISED -		FED. ROAD DIST. NO. - [ILLINOIS] FED. AID PROJECT							