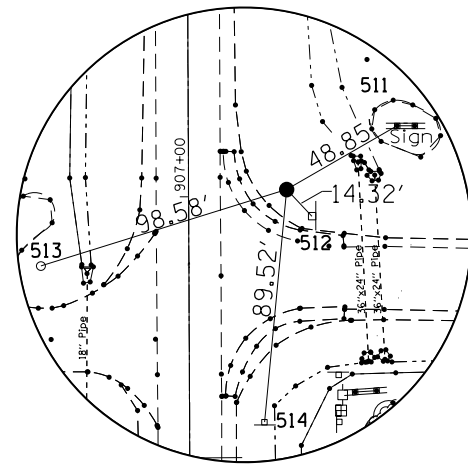
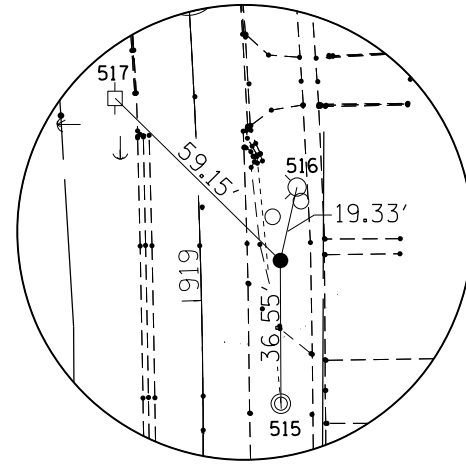


EXISTING HORIZONTAL & VERTICAL CONTROL



HORIZONTAL CONTROL POINT NO. 907123



SURVEY WORK POINT NO. 110

HORIZONTAL CONTROL POINTS							
POINT	NORTH	EAST	ELEVATION	CHAIN	STATION	OFFSET	DESCRIPTION
907123	1868828.4206	2351770.1831	623.8998	IL78SOUTH	907+02.61	37.5941' RT	5/8" IRON PIN

SURVEY WORK POINTS							
POINT	NORTH	EAST	ELEVATION	CHAIN	STATION	OFFSET	DESCRIPTION
108	1869224.0279	2351892.5155	622.5258	IL78SOUTH	910+97.63	161.8127' RT	GPS CONTROL POINT, PK NAIL
109	1869179.1000	2351783.9700	620.4800	IL78SOUTH	910+53.22	53.0541' RT	GPS CONTROL POINT, PIN
110	1870035.8600	2351746.7500	635.5310	IL78SOUTH	919+09.69	20.4145' RT	GPS CONTROL POINT, PIN

BENCH MARKS							
POINT	NORTH	EAST	ELEVATION	CHAIN	STATION	OFFSET	DESCRIPTION
400	1869163.9369	2351714.1047	627.4180	IL78SOUTH	910+38.39	16.8828' LT	TOP OF WINGWALL, CHISELED SQUARE
401	1869093.4351	2351747.0377	627.4150	IL78SOUTH	909+67.73	15.7135' RT	TOP OF WINGWALL, CHISELED SQUARE

REFERENCE TIES						
POINT	NORTH	EAST	CHAIN	STATION	OFFSET	DESCRIPTION
511	1868852.8289	2351812.4982	IL78SOUTH	907+26.82	80.0252' RT	SIGN FOUNDATION
512	1868818.2419	2351780.2595	IL78SOUTH	906+92.38	47.6218' RT	SIGN FOUNDATION, STOP SIGN
513	1868799.2580	2351676.0136	IL78SOUTH	906+73.90	56.7135' LT	ELECTRICAL SENSOR
514	1868739.3019	2351761.6738	IL78SOUTH	906+13.53	28.6597' RT	SIGN FOUNDATION, NO PASS
515	1869999.3025	2351746.8835	IL78SOUTH	918+73.52	19.8934' RT	MANHOLE LID
516	1870054.7170	2351751.0383	IL78SOUTH	919+28.17	25.3121' RT	FIRE HYDRANT
517	1870077.2732	2351704.5198	IL78SOUTH	919+52.71	20.1733' LT	POWER POLE

APPARENT PROPERTY CORNERS							
POINT	NORTH	EAST	ELEVATION	CHAIN	STATION	OFFSET	DESCRIPTION
701	1864681.9577	2347943.1715	643.0779	IL78SOUTH	873+48.08	3983.646' LT	SECTION CORNER, SECTION CORNER
702	1867310.4985	2347942.2845	650.0014	IL78SOUTH	892+02.97	3797.5036' LT	SECTION CORNER, SECTION CORNER
703	1867388.5433	2347941.7315	660.2036	IL78SOUTH	892+81.02	3797.6842' LT	FENCE POST
704	1870053.3757	2347941.4018	622.3775	IL78SOUTH	921+69.37	3777.1543' LT	SECTION CORNER, SECTION CORNER
705	1869940.1110	2347941.3911	620.4242	IL78SOUTH	920+62.10	3784.4299' LT	SECTION CORNER, SECTION CORNER
706	1864792.7439	2353077.1122	620.2208	IL78SOUTH	864+17.81	1059.2581' RT	FENCE POST
707	1864787.6406	2352567.3703	624.9832	IL78SOUTH	865+19.98	559.835' RT	PROPERTY CORNER, PROPERTY CORNER
708	1864783.9465	2352021.6169	625.6964	IL78SOUTH	866+31.10	25.5015' RT	PROPERTY CORNER, PROPERTY CORNER
709	1868779.3569	2355701.6335	642.3863	IL78SOUTH	906+34.79	3968.7657' RT	SECTION CORNER, SECTION CORNER
710	1870101.4525	2355694.8649	633.9851	IL78SOUTH	918+95.84	3968.9978' RT	SECTION CORNER, SECTION CORNER
712	1869647.4510	2351056.5838	628.4672	IL78SOUTH	915+25.04	672.0891' LT	PI, PI
713	1869614.0238	2351017.0661	630.5089	IL78SOUTH	914+91.80	711.7658' LT	PROPERTY CORNER, PROPERTY CORNER
714	1870070.4222	2351360.5489	639.2108	IL78SOUTH	919+65.72	364.0163' LT	PROPERTY CORNER, PROPERTY CORNER
715	1870072.8664	2351690.7001	637.8143	IL78SOUTH	919+48.94	34.1937' LT	PROPERTY CORNER, PROPERTY CORNER
716	1869699.6909	2352167.6671	623.6080	IL78SOUTH	915+71.98	439.2308' RT	PROPERTY CORNER, PROPERTY CORNER
717	1869943.8233	2352169.7852	628.0281	IL78SOUTH	918+16.09	442.5138' RT	PROPERTY CORNER, PROPERTY CORNER
718	1870075.8220	2352169.3468	638.8196	IL78SOUTH	919+32.60	444.1234' RT	PROPERTY CORNER, PROPERTY CORNER
719	1869697.6466	2351788.2683	623.4649	IL78SOUTH	915+71.74	59.8266' RT	PROPERTY CORNER, PROPERTY CORNER
720	1868825.2603	2352569.0815	627.6386	IL78SOUTH	906+95.64	836.4683' RT	PROPERTY CORNER, PROPERTY CORNER
721	1868844.3905	2352569.0471	627.5826	IL78SOUTH	907+14.77	836.5252' RT	PROPERTY CORNER, PROPERTY CORNER
722	1868827.0782	2353069.2195	632.4449	IL78SOUTH	906+95.07	1336.6093' RT	PROPERTY CORNER, PROPERTY CORNER
723	1868891.8226	2353758.0914	644.7528	IL78SOUTH	907+56.53	2025.7823' RT	PROPERTY CORNER, PROPERTY CORNER
724	1868832.3530	2353818.3279	643.7743	IL78SOUTH	906+96.77	2085.7344' RT	PROPERTY CORNER, PROPERTY CORNER
725	1869263.1492	2354376.3676	630.8947	IL78SOUTH	911+24.90	2645.8232' RT	PROPERTY CORNER, PROPERTY CORNER
726	1869690.1371	2354374.4101	628.2993	IL78SOUTH	915+51.89	2645.9031' RT	PROPERTY CORNER, PROPERTY CORNER
727	1870091.0095	2354372.5221	628.4043	IL78SOUTH	919+02.57	2646.7422' RT	PROPERTY CORNER, PROPERTY CORNER
728	1870090.9837	2354379.4562	627.5316	IL78SOUTH	919+02.49	2653.6737' RT	PROPERTY CORNER, PROPERTY CORNER
729	1869258.7727	2353756.3388	641.3131	IL78SOUTH	911+23.48	2025.7806' RT	PROPERTY CORNER, PROPERTY CORNER
775	1866100.3662	2351729.8539	622.3413	IL78SOUTH	879+76.66	40.109' LT	PROPERTY CORNER, PROPERTY CORNER
776	1866082.5795	2350425.2515	618.5608	IL78SOUTH	880+36.20	1343.3392' LT	SECTION CORNER, SECTION CORNER
778	1868752.6651	2350660.5423	619.9544	IL78SOUTH	906+32.15	1072.3955' LT	PROPERTY CORNER, PROPERTY CORNER
779	1869258.3834	2350442.6917	639.2154	IL78SOUTH	911+38.90	1287.8306' LT	PROPERTY CORNER, PROPERTY CORNER
780	1869108.5990	2350440.6319	639.8907	IL78SOUTH	909+89.13	1290.6051' LT	PROPERTY CORNER, PROPERTY CORNER
781	1868960.9116	2350442.5987	639.9328	IL78SOUTH	908+41.44	1289.343' LT	PROPERTY CORNER, PROPERTY CORNER
782	1869766.9018	2350372.2904	641.2291	IL78SOUTH	916+47.75	1355.8047' LT	PROPERTY CORNER, PROPERTY CORNER
783	1869842.9744	2350372.2355	640.9850	IL78SOUTH	917+23.82	1355.4967' LT	PROPERTY CORNER, PROPERTY CORNER
784	1870063.4431	2350372.6009	642.6981	IL78SOUTH	920+26.27	1350.3577' LT	PROPERTY CORNER, PROPERTY CORNER
785	1870120.8386	2350372.9405	642.8745	IL78SOUTH	920+81.68	1346.2687' LT	PROPERTY CORNER, RAIL ROAD SPIKE
786	1870449.0620	2350371.8891	648.4540	IL78SOUTH	924+09.09	1326.3643' LT	PROPERTY CORNER, PIPE
787	1870393.8127	2350438.2883	647.0764	IL78SOUTH	923+49.72	1263.6276' LT	PROPERTY CORNER, PROPERTY CORNER
788	1870311.1635	2350433.4387	645.1221	IL78SOUTH	922+67.54	1273.7436' LT	PROPERTY CORNER, PROPERTY CORNER
789	1870063.7376	2350438.6856	641.4267	IL78SOUTH	920+22.24	1284.395' LT	PROPERTY CORNER, PROPERTY CORNER

FILE NAME =	USER NAME = Fasslermj	DESIGNED -	REVISED -
es:\pw_work\p\dot\fasslermj\d0149594\0208209-shit-ATB.dgn		DRAWN -	REVISED -
		CHECKED -	REVISED -
		DATE -	REVISED -

STATE OF ILLINOIS
DEPARTMENT OF TRANSPORTATION

EXISTING HORIZONTAL & VERTICAL
CONTROL SHEETS

SCALE: _____ SHEET NO. ___ OF ___ SHEETS STA. _____ TO STA. _____

F.A.P. RTE.	SECTION	COUNTY	TOTAL SHEETS	SHEET NO.
22	15BR-1	WHITESIDE	146	27
CONTRACT NO. 64F19				
ILLINOIS FED. AID PROJECT				