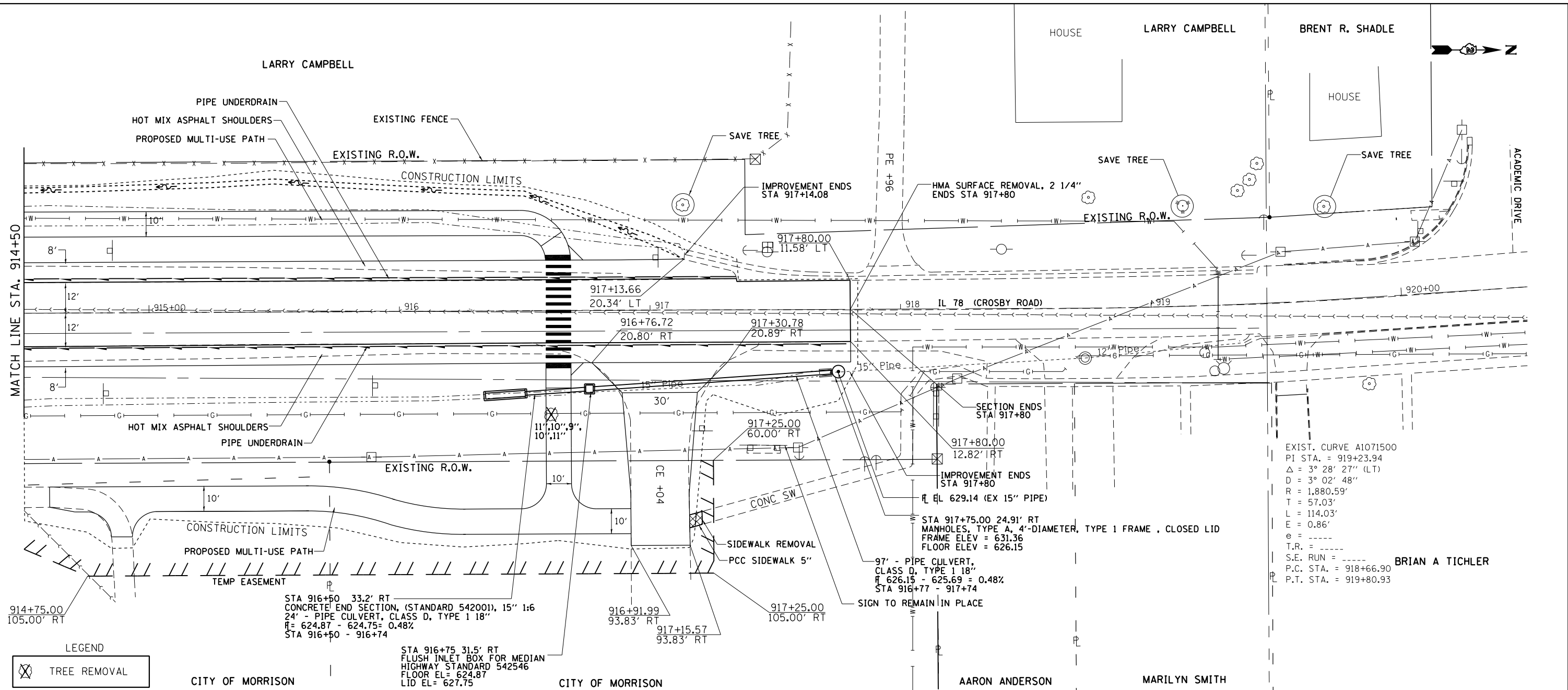


DATE	
BY	
PLAN	SURVEYED
	PLOTTED
	ALIGNED
	CHECKED
	DESIGNED
	NO. _____
	FILE NAME

DATE	
BY	
PROFILE	SURVEYED
	PLOTTED
	GRADES CHECKED
	STRUCTURE NOTATIONS OK'D
	NO. _____
	FILE NAME



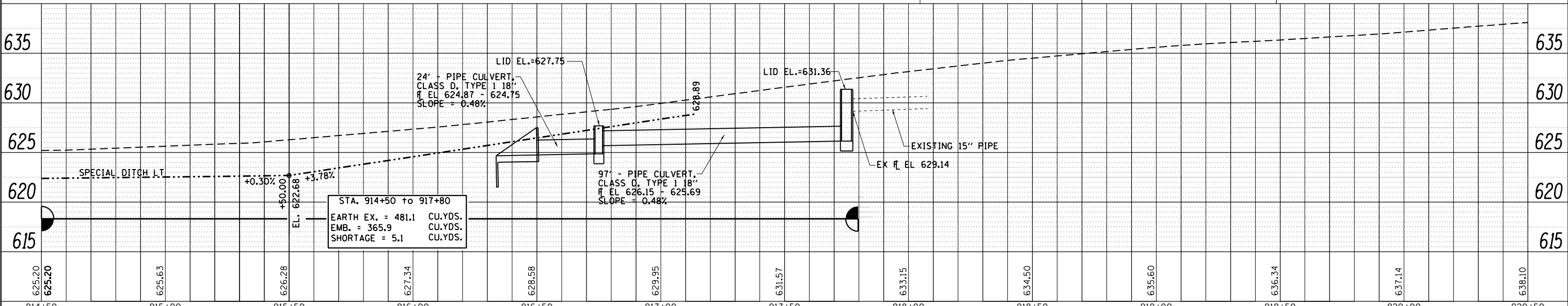
EXIST. CURVE A1071500  
 P.I. STA. = 919+23.94  
 $\Delta = 3^\circ 28' 27''$  (LT)  
 $D = 3^\circ 02' 48''$   
 $R = 1,880.59'$   
 $T = 57.03'$   
 $L = 114.03'$   
 $E = 0.86'$   
 $e = \text{---}$   
 $T.R. = \text{---}$   
 $S.E. RUN = \text{---}$   
 P.C. STA. = 918+66.90  
 P.T. STA. = 919+80.93

BRIAN A TICHLER

LEGEND  
 TREE REMOVAL

STA 916+50 33.2' RT  
 CONCRETE END SECTION, (STANDARD 542001), 15" 1:6  
 24" - PIPE CULVERT, CLASS D, TYPE 1 18"  
 $\bar{R} = 624.87 - 624.75 = 0.48\%$   
 STA 916+50 - 916+74

STA 916+75 31.5' RT  
 FLUSH INLET BOX FOR MEDIAN  
 HIGHWAY STANDARD 542546  
 FLOOR EL = 624.87  
 LID EL = 627.75



STA. 914+50 to 917+80  
 EARTH EX. = 481.1 CU.YDS.  
 EMB. = 365.9 CU.YDS.  
 SHORTAGE = 5.1 CU.YDS.

FILE NAME =	USER NAME = Fasslermj	DESIGNED -	REVISED -	<b>STATE OF ILLINOIS DEPARTMENT OF TRANSPORTATION</b>	<b>IL 78 (CROSBY ROAD) PLAN &amp; PROFILE</b>		F.A.P. R.T.E. = 22	SECTION = 15BR-1	COUNTY = WHITESIDE	TOTAL SHEETS = 146	SHEET NO. = 32	
c:\pwork\pwork\fasslermj\d0149594\0208209-sht-plnpr.f.dgn		DRAWN -	REVISED -		SCALE: 1"=20'	SHEET NO. OF SHEETS	STA. 914+50 TO STA. 920+50	CONTRACT NO. 64F19				
PLOT SCALE = 40.0000' / in.		CHECKED -	REVISED -		ILLINOIS FED. AID PROJECT							
PLOT DATE = Fri Jun 13 10:14:08 2014		DATE -	REVISED -									