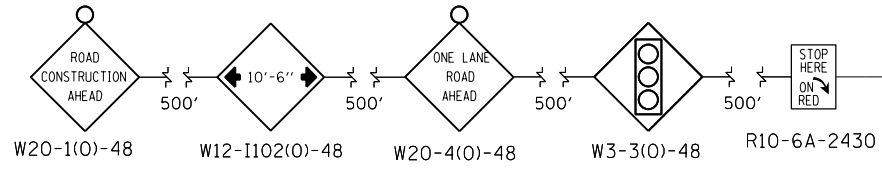
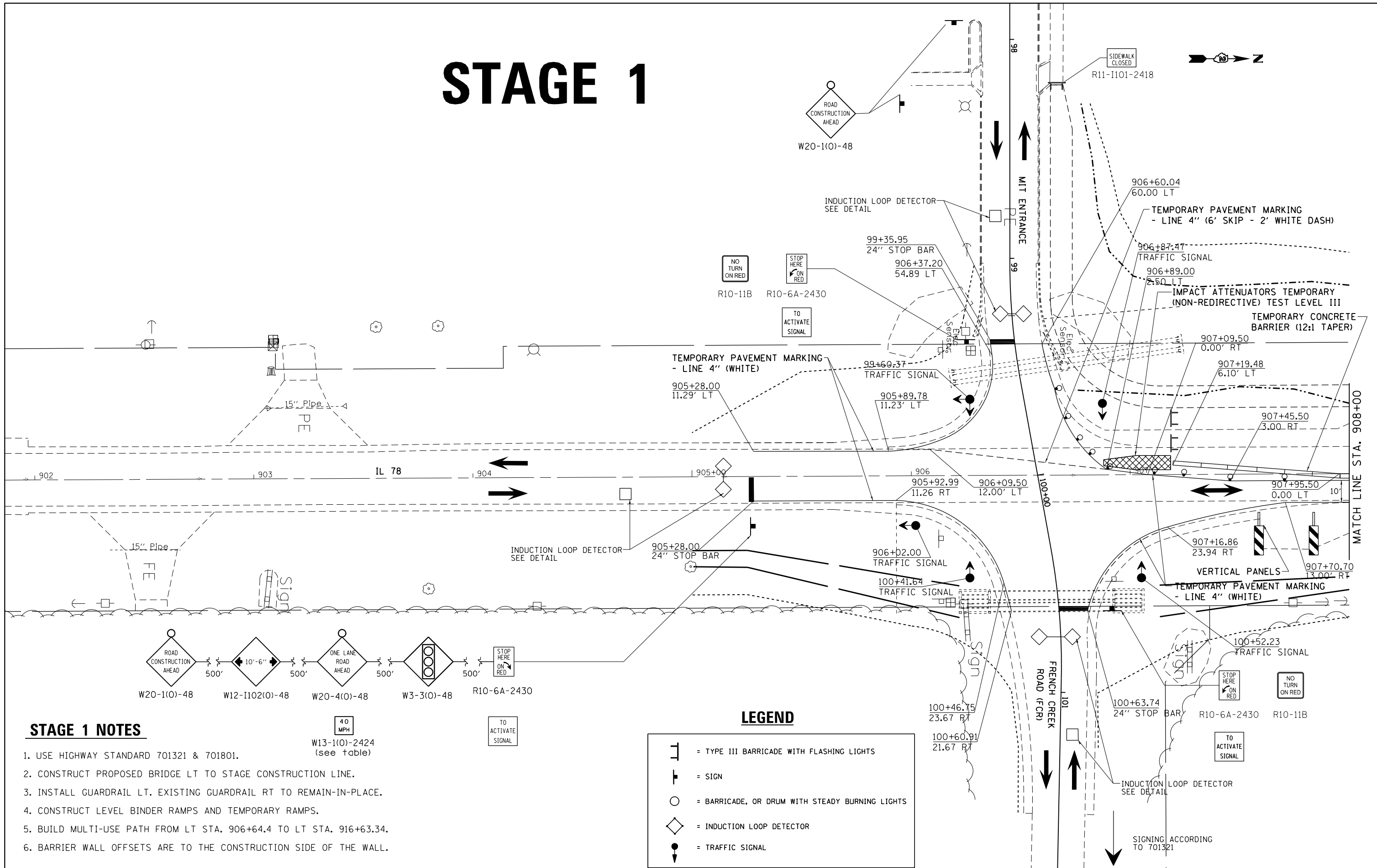


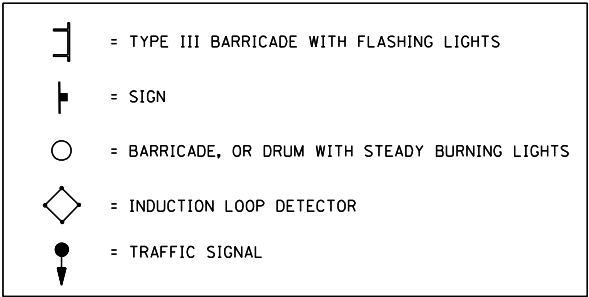
STAGE 1



STAGE 1 NOTES

1. USE HIGHWAY STANDARD 701321 & 701801.
2. CONSTRUCT PROPOSED BRIDGE LT TO STAGE CONSTRUCTION LINE.
3. INSTALL GUARDRAIL LT. EXISTING GUARDRAIL RT TO REMAIN-IN-PLACE.
4. CONSTRUCT LEVEL BINDER RAMPS AND TEMPORARY RAMPS.
5. BUILD MULTI-USE PATH FROM LT STA. 906+64.4 TO LT STA. 916+63.34.
6. BARRIER WALL OFFSETS ARE TO THE CONSTRUCTION SIDE OF THE WALL.

LEGEND



FILE NAME =	USER NAME = Fasslermj	DESIGNED -	REVISED -
ca:\pwork\pwork\dot\fasslermj\0149594\0208209-shit-staging.dgn		DRAWN -	REVISED -
PLOT SCALE = 40.0000' / in.		CHECKED -	REVISED -
PLOT DATE = Fri Jun 13 10:37:15 2014		DATE -	REVISED -

**STATE OF ILLINOIS
DEPARTMENT OF TRANSPORTATION**

IL 78 STAGING DETAILS
STAGE 1

SCALE: 20' / IN. SHEET NO. 9 OF 14 SHEETS STA. 902+00 TO STA. 908+00

* IL 78	F.A.P. RTE.	SECTION	COUNTY	TOTAL SHEETS	SHEET NO.
	#22	15BR-1	WHITESIDE	146	48
			CONTRACT NO.	64F19	
			ILLINOIS FED. AID PROJECT		