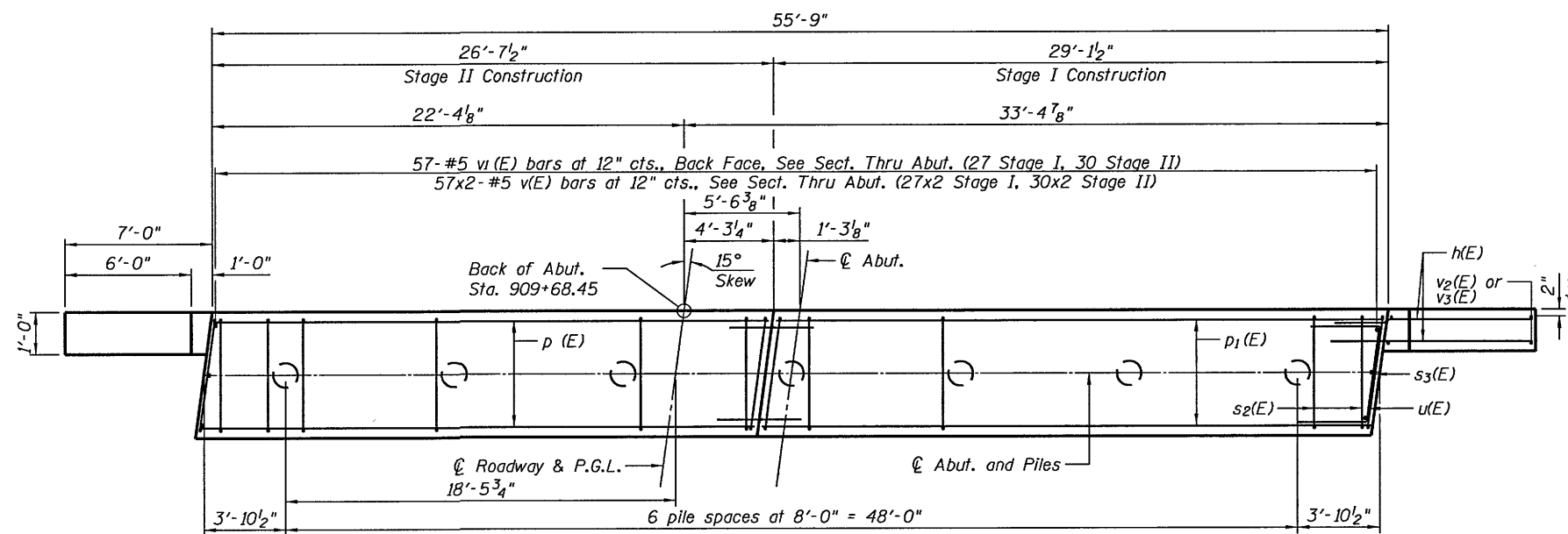


**ELEVATION**  
(Looking South)

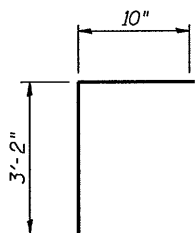
**SEC. THRU ABUT.**



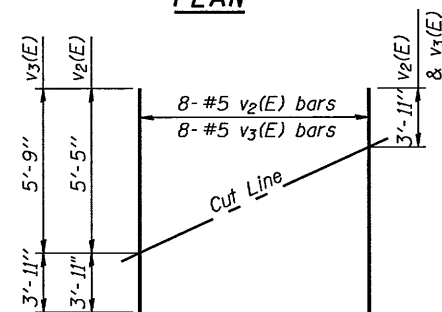
**PLAN**

**PILE DATA**

Type: Metal Shell Piles 14" x 0.25"  
 Nominal Required Bearing: 265 Kips  
 Factored Resistance Available: 146 Kips  
 Est. Length: 46 Ft.  
 No. Production Piles: 6  
 No. Test Piles: 1

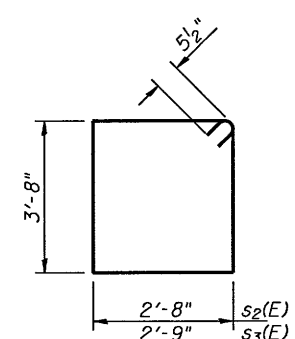


**BARS v1(E)**

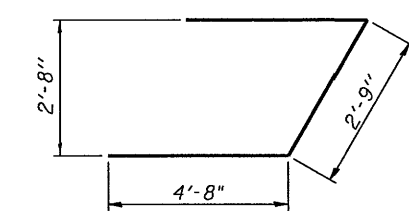


**FIELD CUTTING DIAGRAM**

Order v2(E) & v3(E) full length. Cut as shown and use remainder of bars in opposite face.



**BARS s2(E) & s3(E)**



**BAR u(E)**

**BILL OF MATERIAL**

Bar	No.	Size	Length	Shape
h(E)	32	#5	9'-4"	—
p(E)	10	#7	22'-0"	—
p1(E)	10	#7	33'-0"	—
s2(E)	52	#5	13'-7"	□
s3(E)	4	#5	13'-9"	□
u(E)	8	#6	12'-1"	┘
v(E)	114	#5	3'-8"	—
v1(E)	57	#5	4'-0"	└
v2(E)	8	#5	9'-4"	—
v3(E)	8	#5	9'-8"	—
Structure Excavation		Cu. Yd.	30	
Concrete Structures		Cu. Yd.	27.5	
Reinforcement Bars, Epoxy Coated		Pound	3200	
Furnishing Metal Shell Piles, 14" x 0.250"		Foot	276	
Driving Piles		Foot	276	
Test Pile Metal Shells		Each	1	

For details of Bar Splicers, see sheet S-21.  
 For details of piles, see sheet S-20. Cost for metal shell reinforcement is included in pay item Furnishing Metal Shell Piles, 14" x 0.250".

COMPANY NAME: HR GREEN, INC.  
 PROJECT CONTACT: KEVIN J. BRENN  
 CLIENT: ILLINOIS DEPARTMENT OF TRANSPORTATION  
 DATE PLOTTED: 9/23/2012 3:26:43 PM  
 PLOT SCALE: 1/8" = 1'-0"  
 PEN TABLE: HRGreen



USER NAME =	DESIGNED - MGH	REVISED
	CHECKED - KJB	REVISED
PLOT SCALE =	DRAWN - WJH	REVISED
PLOT DATE =	CHECKED - KJB	REVISED

STATE OF ILLINOIS  
 DEPARTMENT OF TRANSPORTATION

SOUTH ABUTMENT DETAILS  
 STRUCTURE NO. 098-0118

SHEET NO. S-15 OF S-23 SHEETS

F.A.P. RTE. 22	SECTION 15BR-1	COUNTY WHITESIDE	TOTAL SHEETS 146	SHEET NO. 73
				CONTRACT NO. 64F19
ILLINOIS FED. AID PROJECT				