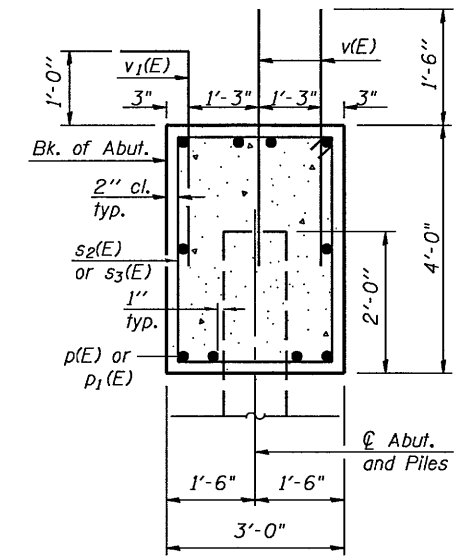
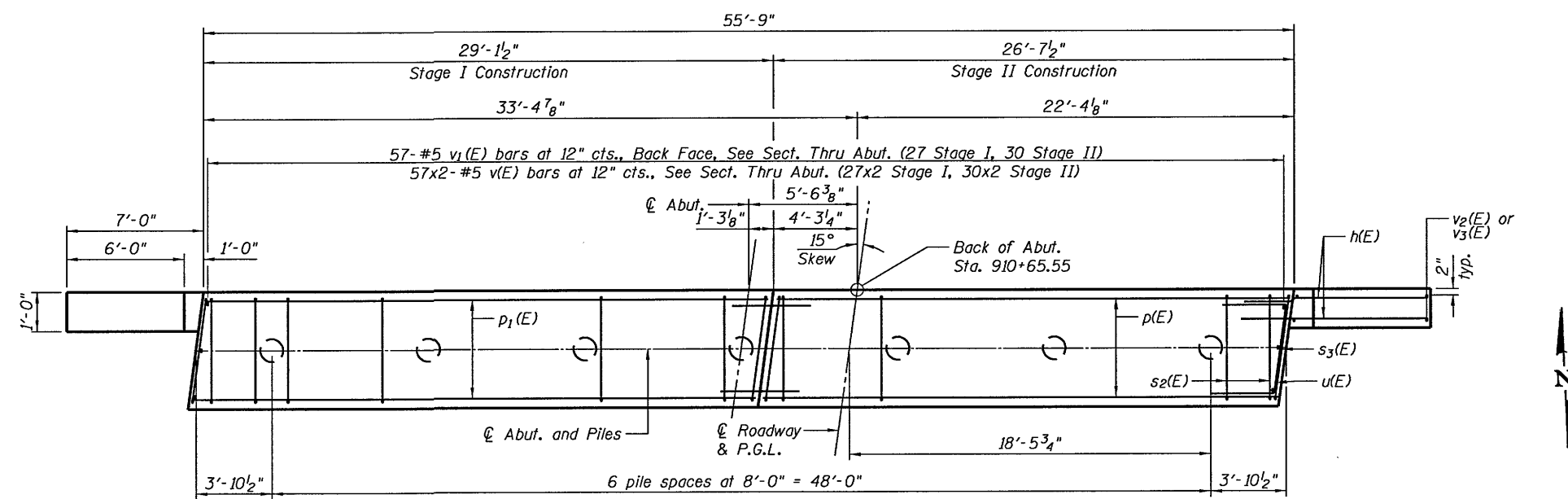


ELEVATION
(Looking North)



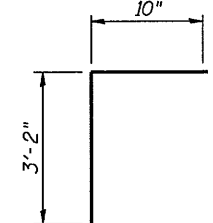
SEC. THRU ABUT.



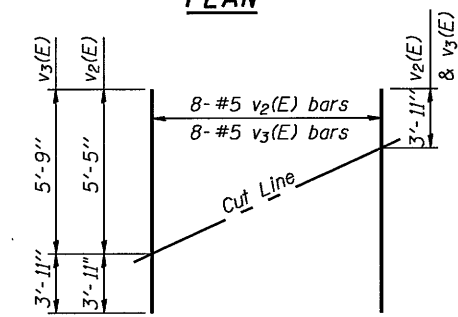
PLAN

PILE DATA

Type: Metal Shell Piles 14" x 0.25"
 Nominal Required Bearing: 265 Kips
 Factored Resistance Available: 146 Kips
 Est. Length: 43 Ft.
 No. Production Piles: 6
 No. Test Piles: 1

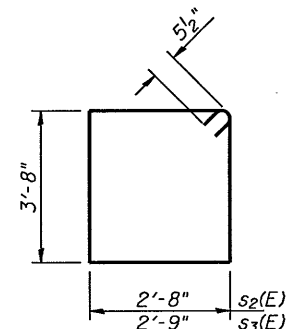


BARS v1(E)

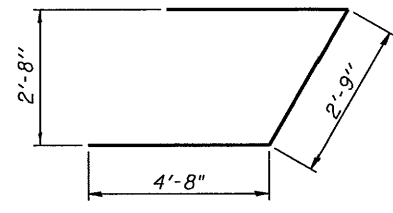


FIELD CUTTING DIAGRAM

Order v2(E) & v3(E) full length. Cut as shown and use remainder of bars in opposite face.



BARS s2(E) & s3(E)



BAR u(E)

BILL OF MATERIAL

| Bar | No. | Size | Length | Shape |
|--|-----|---------|--------|-------|
| h(E) | 32 | #5 | 9'-4" | — |
| p(E) | 10 | #7 | 22'-0" | — |
| p1(E) | 10 | #7 | 33'-0" | — |
| s2(E) | 52 | #5 | 13'-7" | □ |
| s3(E) | 4 | #5 | 13'-9" | □ |
| u(E) | 8 | #6 | 12'-1" | ┘ |
| v(E) | 114 | #5 | 3'-8" | — |
| v1(E) | 57 | #5 | 4'-0" | ┘ |
| v2(E) | 8 | #5 | 9'-4" | — |
| v3(E) | 8 | #5 | 9'-8" | — |
| Structure Excavation | | Cu. Yd. | 205 | |
| Concrete Structures | | Cu. Yd. | 27.5 | |
| Reinforcement Bars, Epoxy Coated | | Pound | 3200 | |
| Furnishing Metal Shell Piles, 14" x 0.250" | | Foot | 258 | |
| Driving Piles | | Foot | 258 | |
| Test Pile Metal Shells | | Each | 1 | |

For details of Bar Splicers, see sheet S-21.
 For details of piles, see sheet S-20. Cost for metal shell reinforcement is included in pay item Furnishing Metal Shell Piles, 14" x 0.250".

COMPANY NAME: HR GREEN, INC.
 CONTACT: ILLINOIS DEPARTMENT OF TRANSPORTATION
 CLIENT: ILLINOIS DEPARTMENT OF TRANSPORTATION
 DATE PLOTTED: 9/13/2012 3:24:45 PM
 FILE NAME: 098018-64F19-016-S16-WD.dgn
 PLOT DRIVER: pdf_bw_no_level.ctb
 PEN TABLE: Illinois_half.tbl



| | | |
|--------------|----------------|---------|
| USER NAME = | DESIGNED - MGH | REVISED |
| | CHECKED - KJB | REVISED |
| PLOT SCALE = | DRAWN - WJH | REVISED |
| PLOT DATE = | CHECKED - KJB | REVISED |

STATE OF ILLINOIS
DEPARTMENT OF TRANSPORTATION

NORTH ABUTMENT DETAILS
STRUCTURE NO. 098-0118
 SHEET NO. S-16 OF S-23 SHEETS

| | | | | |
|---------------------------|---------|-----------|--------------------|-----------|
| F.A.P. RTE. | SECTION | COUNTY | TOTAL SHEETS | SHEET NO. |
| 22 | 15BR-1 | WHITESIDE | 146 | 74 |
| | | | CONTRACT NO. 64F19 | |
| ILLINOIS FED. AID PROJECT | | | | |