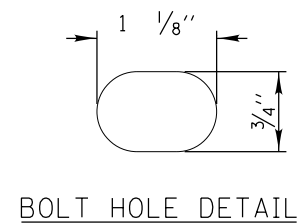
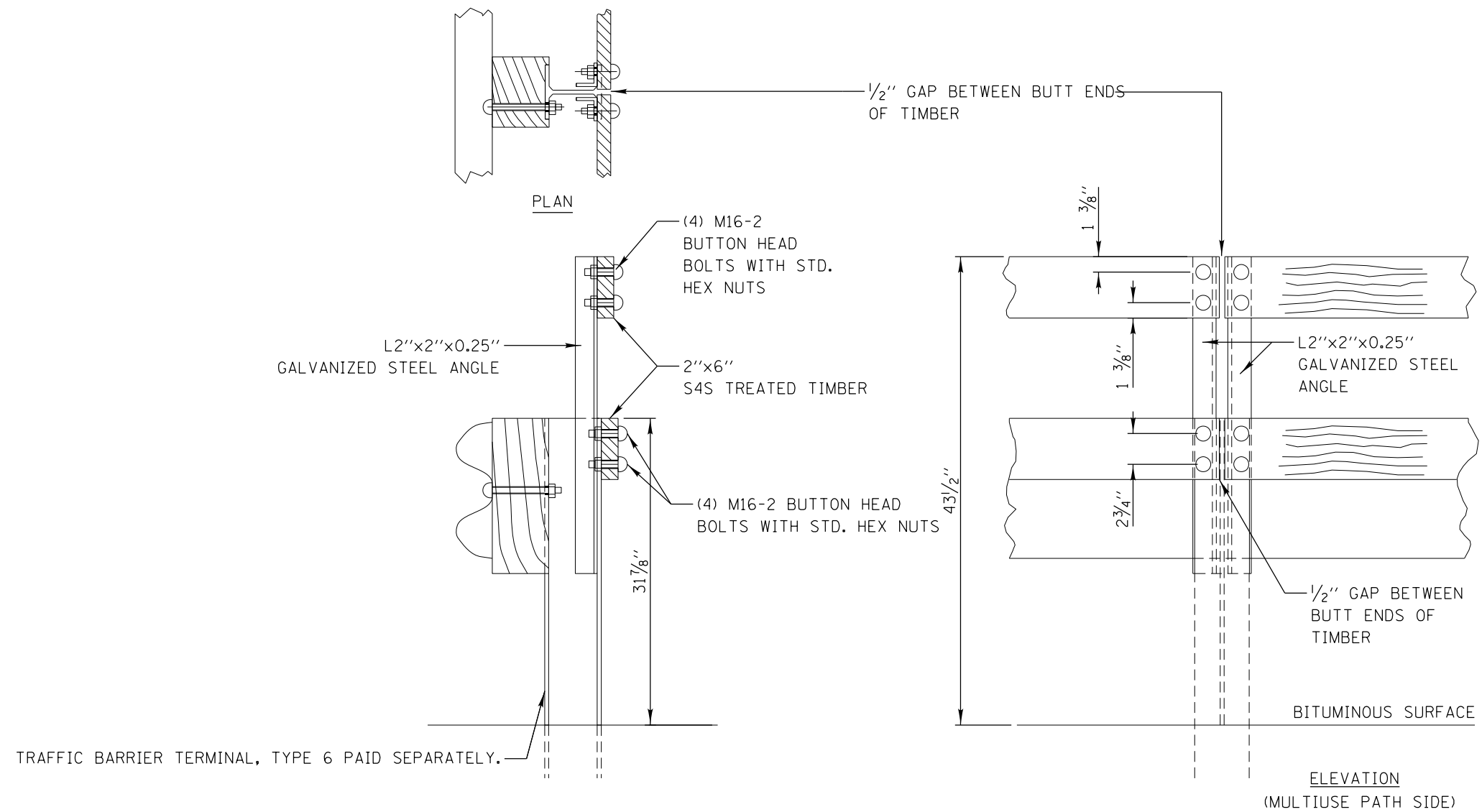


BICYCLE RAILING, SPECIAL



1. DUE TO EXPANSION AND CONTRACTION OF THE TIMBER, THE LOCATION OF THE BOLTS WITH RESPECT TO THE SLOTTED BOLT HOLES IN THE TIMBER WILL BE DEPENDANT ON THE AMBIENT TEMPERATURE AT PLACEMENT. CONSULT THE MANUFACTURER FOR BOLT HOLE LOCATION IN THE TIMBER AND BOLT LOCATION IN THE SLOTTED BOLT HOLE.

2. ANGLES, TIMBERS AND BUTTON HEAD BOLTS WILL BE PAID AT CONTRACT UNIT PRICE PER FOOT FOR BICYCLE RAILING, SPECIAL.

FILE NAME =	USER NAME = Fasslermj	DESIGNED -	REVISED -
et:\pw\work\p\idot\fasslermj\0149594\0208209-shit-details.dgn		DRAWN -	REVISED -
PLOT SCALE = 60.0000' / in.		CHECKED -	REVISED -
PLOT DATE = Fri Jun 13 11:26:31 2014		DATE -	REVISED -

STATE OF ILLINOIS
DEPARTMENT OF TRANSPORTATION

BICYCLE RAILING, SPECIAL

SCALE: _____ SHEET NO. ____ OF ____ SHEETS STA. _____ TO STA. _____

• IL 78		F.A.P. RTE.	SECTION	COUNTY	TOTAL SHEETS	SHEET NO.
		*22	15BR-1	WHITESIDE	146	103
					CONTRACT NO. 64E19	
ILLINOIS FED. AID PROJECT						