

STATE OF ILLINOIS
DEPARTMENT OF TRANSPORTATION
DIVISION OF HIGHWAYS

**PROPOSED
HIGHWAY PLANS**

FAP ROUTE 332 (IL 1/17)
SECTION (6Z,6)RS-3;7 RS-4;R-RS-2

**MILLING & 3P RESURFACING
KANKAKEE COUNTY**

C-93-058-11

W OF IL 114 IN MOMENCE TO
W OF IL 1 (N) IN GRANT PARK

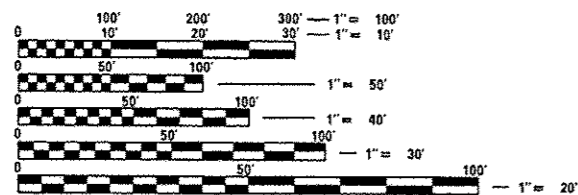
F.A.P. RTE.	SECTION	COUNTY	TOTAL SHEETS	SHEET NO.
332	(6Z,6)RS-3;7 RS-4;R-RS-2	KANKAKEE	17	1
		ILLINOIS	CONTRACT NO. 66B02	

INDEX OF SHEETS

- 1 COVER SHEET
- 2 GENERAL NOTES
- 3-6 SUMMARY OF QUANTITIES
- 7 TYPICAL SECTIONS
- 8-13 SCHEDULES
- 14-17 DETAILS

LIST OF ILLINOIS DOT HIGHWAY STANDARDS

- 000001-06 STANDARD SYMBOLS, ABBREVIATIONS AND PATTERNS
- 001006 DECIMAL OF AN INCH AND OF A FOOT
- 408201-01 MAILBOX TURNOUT
- 424001-07 PERPENDICULAR CURB RAMPS FOR SIDEWALKS
- 424006-01 DIAGONAL CURB RAMPS FOR SIDEWALKS
- 424011-01 CORNER PARALLEL CURB RAMPS FOR SIDEWALKS
- 424016-01 MID-BLOCK CURB RAMPS FOR SIDEWALKS
- 424021-02 DEPRESSED CORNER FOR SIDEWALKS
- 424026-01 ENTRANCE / ALLEY PEDESTRIAN CROSSINGS
- 424031-01 MEDIAN PEDESTRIAN CROSSINGS
- 606006-02 OUTLET FOR CONCRETE CURB AND GUTTER, TYPE B-8.24 (B-15.60)
- 667101-02 PERMANENT SURVEY MARKERS
- 701001-02 OFF-ROAD OPERATIONS 2L, 2W, MORE THAN 15' (4.5 m) AWAY
- 701006-05 OFF-ROAD OPERATIONS 2L, 2W, 15' (4.5 m) TO 24" (600 mm) FROM PAVEMENT EDGE
- 701106-02 OFF-ROAD OPERATIONS, MULTILANE, MORE THAN 15' (4.5 m) AWAY
- 701301-04 LANE CLOSURE, 2L, 2W, SHORT TIME OPERATIONS
- 701306-03 LANE CLOSURE, 2L, 2W, SLOW MOVING OPERATIONS DAY ONLY, FOR SPEEDS ≥ 45 MPH
- 701311-03 LANE CLOSURE, 2L, 2W, MOVING OPERATIONS - DAY ONLY
- 701501-06 URBAN LANE CLOSURE, 2L, 2W, UNDIVIDED
- 701801-05 LANE CLOSURE, MULTILANE 1W OR 2W CROSSWALK OR SIDEWALK CLOSURE
- 701901-03 TRAFFIC CONTROL DEVICES
- 780001-04 TYPICAL PAVEMENT MARKINGS
- 781001-03 TYPICAL APPLICATIONS RAISED REFLECTIVE PAVEMENT MARKERS
- 782001 PRISMATIC CURB REFLECTORS
- 886001-01 DETECTOR LOOP INSTALLATIONS
- 886006-01 TYPICAL LAYOUT FOR DETECTION LOOPS

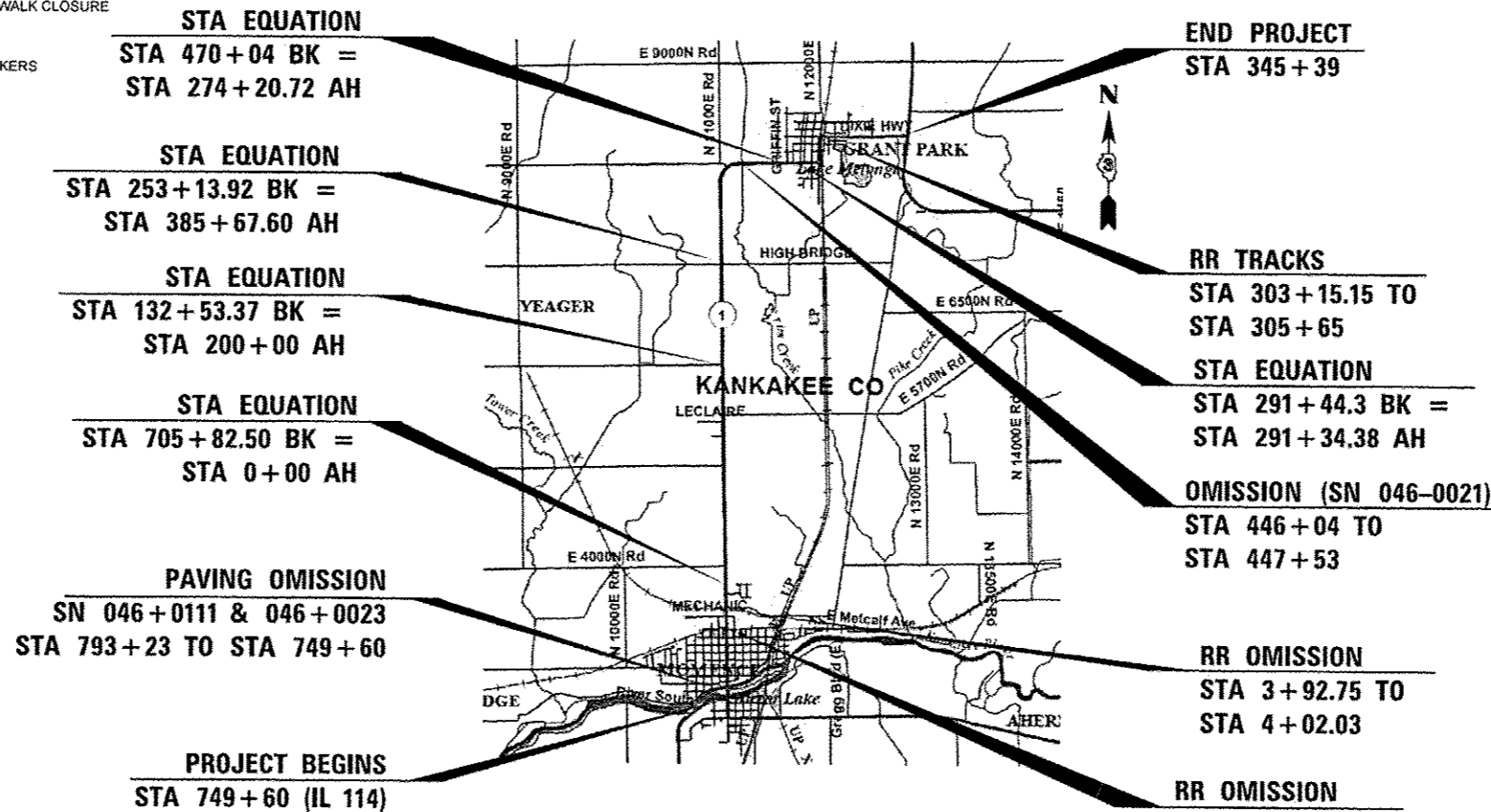


FULL SIZE PLANS HAVE BEEN PREPARED USING STANDARD ENGINEERING SCALES. REDUCED SIZED PLANS WILL NOT CONFORM TO STANDARD SCALES. IN MAKING MEASUREMENTS ON REDUCED PLANS, THE ABOVE SCALES MAY BE USED.

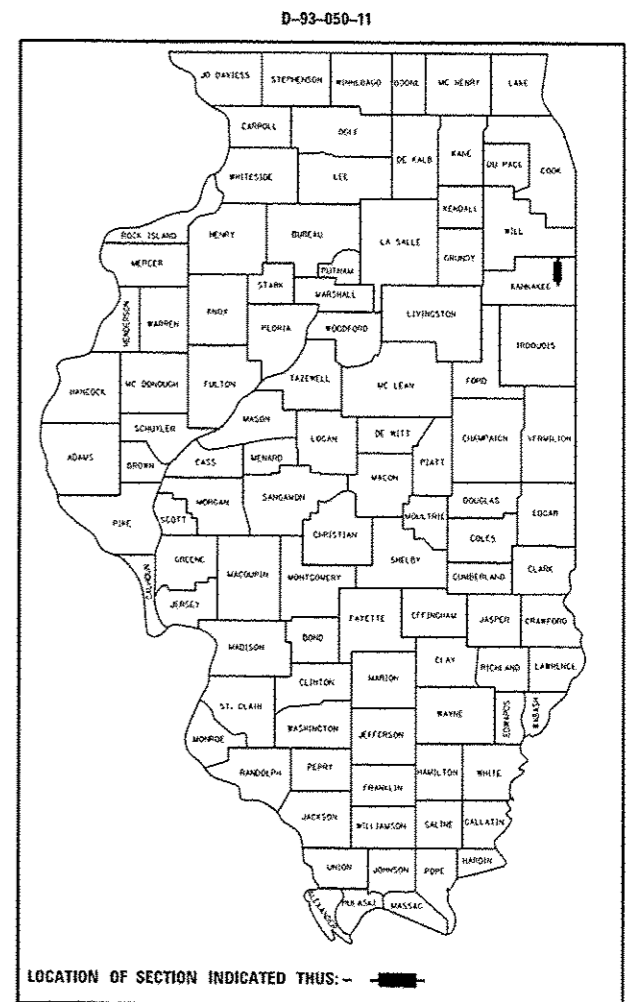
J.U.L.I.E.
JOINT UTILITY LOCATION INFORMATION FOR EXCAVATION
1-800-892-0123
OR 811

PROJECT ENGINEER JOE KANNEL, PE
UNIT CHIEF MICHELE LINDEMANN, PE

CONTRACT NO. 66B02



GROSS LENGTH = 52002.65 FT. = 9.849 MILE
NET LENGTH = 37394 FT. = 7.082 MILE



LOCATION OF SECTION INDICATED THUS: - [black rectangle] -

OTHER PRINCIPAL ARTERIAL
2013 ADT = 10,900
P.V. = 88.7%
S.U. = 3.7%
M.U. = 7.6%

STATE OF ILLINOIS
DEPARTMENT OF TRANSPORTATION
DIVISION OF HIGHWAYS

SUBMITTED 6-11-14 2014
Paul [Signature]
DEPUTY DIRECTOR OF HIGHWAYS, REGION ENGINEER

July 18 2014
John D. Baranzelli, P.E.
ENGINEER OF DESIGN AND ENVIRONMENT

July 18 2014
Omer Osman, P.E.
DIRECTOR OF HIGHWAYS, CHIEF ENGINEER

**PRINTED BY THE AUTHORITY
OF THE STATE OF ILLINOIS**