

F.A.P. RTE.	SECTION	COUNTY	TOTAL SHEETS	SHEET NO.
46	(1,1Z) RS-4	LASALLE	54	1
ILLINOIS CONTRACT NO. 66C07				

INDEX OF SHEETS

- 1 COVER SHEET
- 2 GENERAL NOTES
- 3-7 SUMMARY OF QUANTITIES
- 8-17 TYPICAL SECTIONS
- 18-23 SCHEDULE OF QUANTITIES
- 24-31 PLAN VIEWS
- 32-47 DETECTOR LOOP DETAILS
- 48-54 DETAILS

LIST OF ILLINOIS DOT HIGHWAY STANDARDS

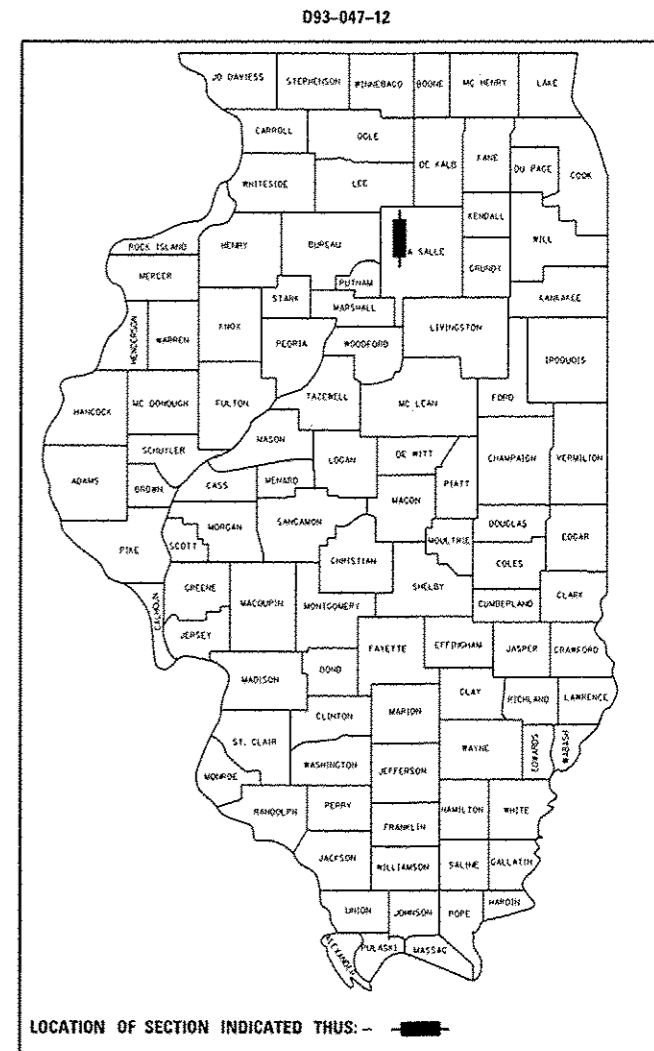
- 000001-06 STANDARD SYMBOLS, ABBREVIATIONS AND PATTERNS
- 001006 DECIMAL OF AN INCH AND OF A FOOT
- 424006-01 DIAGONAL CURB RAMPS FOR SIDEWALKS
- 424011-01 CORNER PARALLEL CURB RAMPS FOR SIDEWALKS
- 424016-01 MID-BLOCK CURB RAMPS FOR SIDEWALKS
- 424031-01 MEDIAN PEDESTRIAN CROSSINGS
- 442201-03 CLASS C AND D PATCHES
- 606301-04 PCC ISLANDS AND MEDIANS
- 635006-03 REFLECTOR AND TERMINAL MARKER PLACEMENT
- 635011-02 REFLECTOR MARKER AND MOUNTING DETAILS
- 667101-02 PERMANENT SURVEY MARKERS
- 701101-04 OFF-ROAD OPERATIONS MULTILANE, 15' (4.5 m) TO 24" (600 mm) FROM PAVEMENT EDGE
- 701456-03 PARTIAL EXIT RAMP CLOSURE FREEWAY/EXPRESSWAY
- 701501-06 URBAN LANE CLOSURE, 2L, 2W, UNDIVIDED
- 701601-09 URBAN LANE CLOSURE, MULTILANE, 1W OR 2W WITH NONTRAVERSABLE MEDIAN
- 701701-09 URBAN LANE CLOSURE, MULTILANE INTERSECTION
- 701801-05 LANE CLOSURE, MULTILANE 1W OR 2W CROSSWALK OR SIDEWALK CLOSURE
- 701901-03 TRAFFIC CONTROL DEVICES
- 780001-04 TYPICAL PAVEMENT MARKINGS
- 781001-03 TYPICAL APPLICATIONS RAISED REFLECTIVE PAVEMENT MARKERS
- 782001 PRISMATIC CURB REFLECTORS
- 814006-02 DOUBLE HANDHOLES
- 876001-03 PEDESTRIAN PUSH BUTTON POST
- 886001-01 DETECTOR LOOP INSTALLATIONS
- 886006-01 TYPICAL LAYOUT FOR DETECTION LOOPS

STATE OF ILLINOIS
DEPARTMENT OF TRANSPORTATION
DIVISION OF HIGHWAYS
PROPOSED
HIGHWAY PLANS

FAP ROUTE 46 (IL 251)
SECTION (1,1Z) RS-4

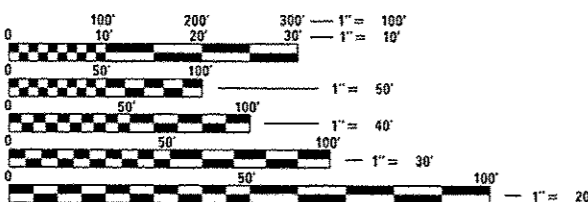
3P MILL & RESURFACING
LASALLE COUNTY

C-93-086-12



FUNCTIONAL CLASSIFICATION:
 URBAN MINOR ARTERIAL (NORTH OF I-80)
 URBAN ARTERIAL (SOUTH OF I-80)

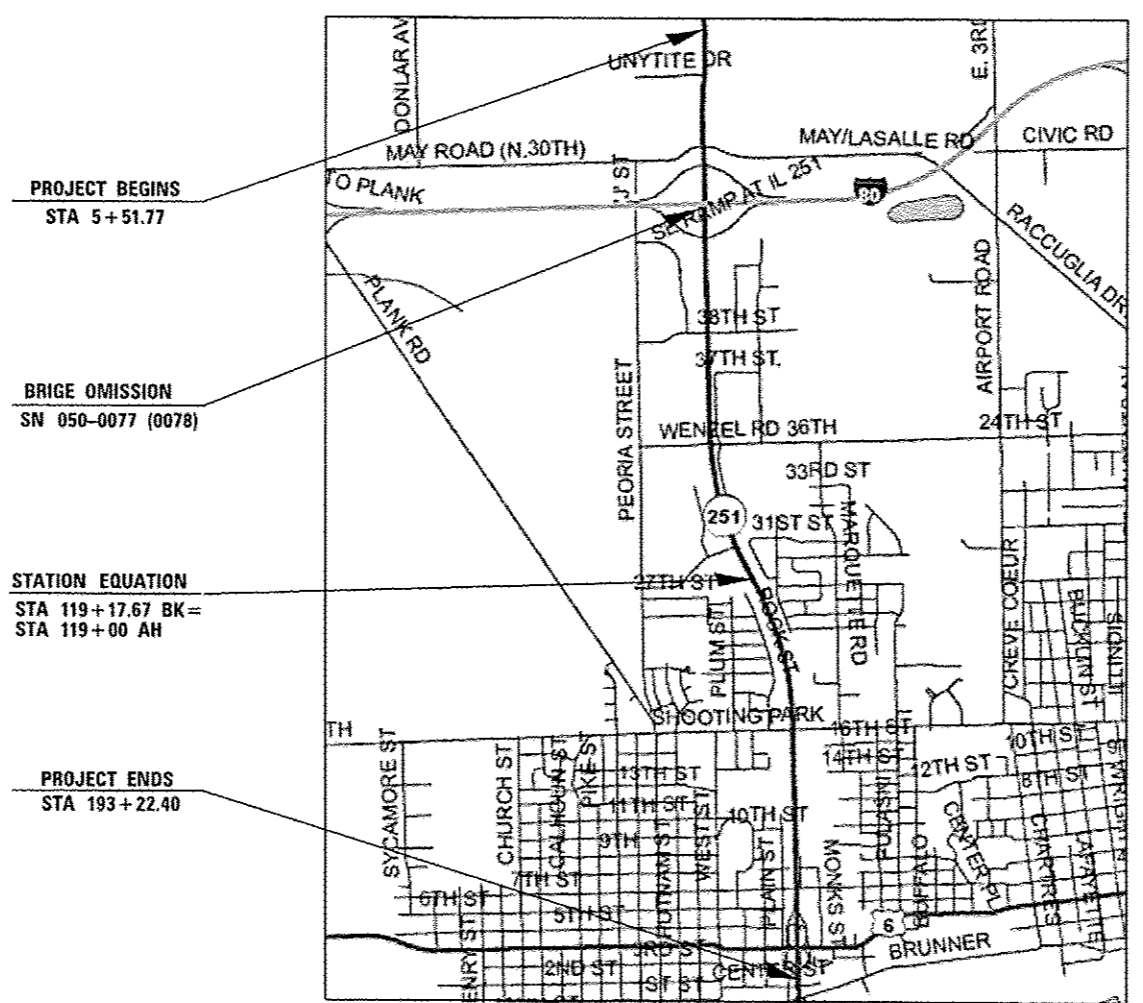
2013 ADT = 15000 VPD
 PV% = 95.0 SU% = 3.0 MU% = 2.0



FULL SIZE PLANS HAVE BEEN PREPARED USING STANDARD ENGINEERING SCALES. REDUCED SIZED PLANS WILL NOT CONFORM TO STANDARD SCALES. IN MAKING MEASUREMENTS ON REDUCED PLANS, THE ABOVE SCALES MAY BE USED.

J.U.L.I.E.
 JOINT UTILITY LOCATION INFORMATION FOR EXCAVATION
 1-800-892-0123
 OR 811

PROJECT ENGINEER: CRAIG REED, P.E.
UNIT CHIEF: BRAD DUNCAN, P.E.
 DISTRICT 3 NO. (815) 434-6131
 CONTRACT NO. 66C07



GROSS LENGTH = 18848.23 FT. = 3.57 MILE
 NET LENGTH = 18630.23 FT. = 3.53 MILE

STATE OF ILLINOIS
 DEPARTMENT OF TRANSPORTATION
 DIVISION OF HIGHWAYS

SUBMITTED June 14 2014
Paul Coeto DEB
 DEPUTY DIRECTOR OF HIGHWAYS, REGION ENGINEER

July 18 2014
John D. Baranzelli PE, EIT
 ENGINEER OF DESIGN AND ENVIRONMENT

July 18 2014
Onur Osman PE, EIT
 DIRECTOR OF HIGHWAYS, CHIEF ENGINEER

PRINTED BY THE AUTHORITY
OF THE STATE OF ILLINOIS