

SN 038-0123 NB  
 GUARDRAIL REMOVAL-288'  
 SPBGR TY A 6 FT-128.125'  
 TBT TYPE 6-1 EACH  
 TBT TYPE 1 (SPEC)-1 EACH

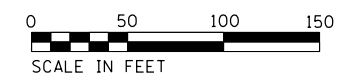
STA. 132+00  
 NB 36''X61' RCCP  
 W/MEDIAN INLET  
 REPLACE MISSING  
 GRATE ON MEDIAN  
 INLET

HMA SHLDS, 6'' FOR SPBGR  
 STABILIZATION (TYP.)

STA. 132+00  
 SB 36''X66' RCCP  
 NO WORK

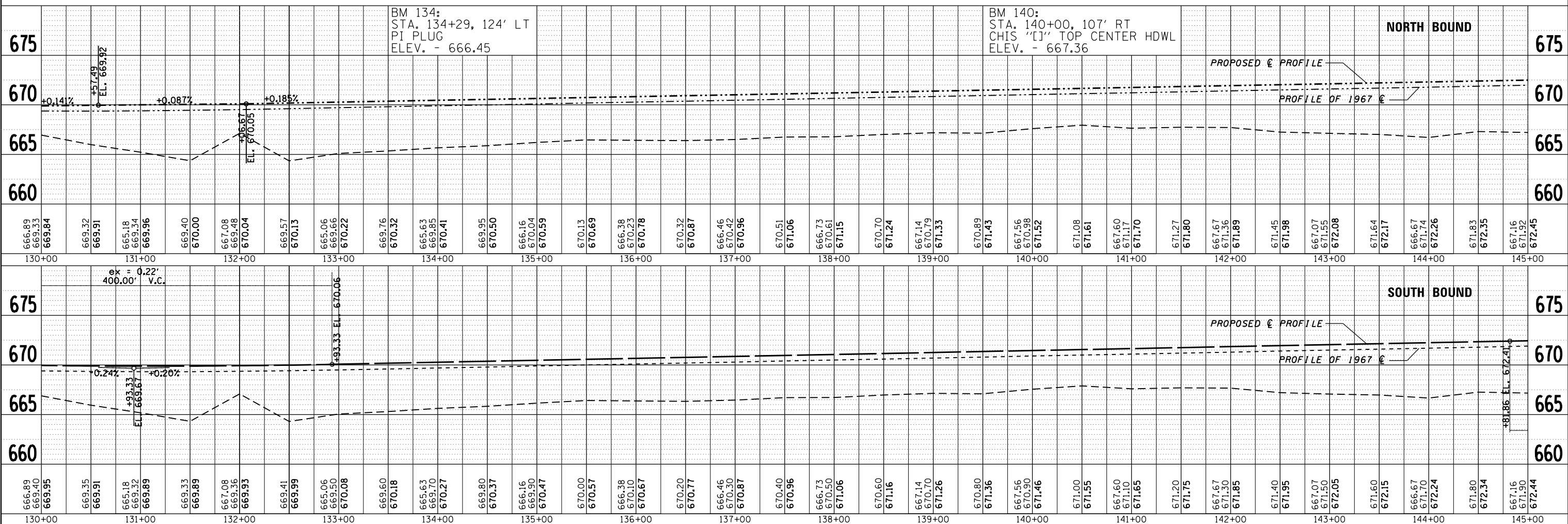
EXIST. CURVE 1571R0-4  
 PI STA. = 134+29.41  
 $\Delta = 23^\circ 37' 37''$  (RT)  
 $D = 1^\circ 00' 00''$   
 $R = 5,729.68'$   
 $T = 1,198.39'$   
 $L = 2,362.72'$   
 $E = 123.98'$   
 $e = 0.0334$   
 P.C. STA. = 122+31.02  
 P.T. STA. = 145+93.74  
 SUPER TRANSITIONS  
 STA. 121+18.42 TO STA. 122+64.42  
 STA. 145+60.34 TO STA. 147+06.34

STA. 7+50 RAMP D  
 24''X61' RCCP  
 REMOVE END SECTION  
 ADD CONC END SECTION 24''



PLAN	SURVEYED	DATE
	PLOTTED	
	ALIGNED	
	CHECKED	
	DESIGNED	
	FILE NAME	
	NO.	

PROFILE	SURVEYED	DATE
	PLOTTED	
	GRADES CHECKED	
	STRUCTURE	
	NOTATIONS CHECKED	
	NO.	



FILE NAME =	USER NAME = duncanbd	DESIGNED -	REVISED -	<b>STATE OF ILLINOIS DEPARTMENT OF TRANSPORTATION</b>	<b>PLAN AND PROFILE</b>		F.A.I. RTE. 57	SECTION 138-3RS-2	COUNTY IROQUOIS	TOTAL SHEETS 186	SHEET NO. 26	
		CHECKED -	REVISED -		SCALE: 1"=50'		SHEET NO. 4 OF 31 SHEETS	STA. 130+00	TO STA. 145+00	CONTRACT NO. 66C53		
		DRAWN -	REVISED -							FED. ROAD DIST. NO. ILLINOIS FED. AID PROJECT		
		CHECKED -	REVISED -									