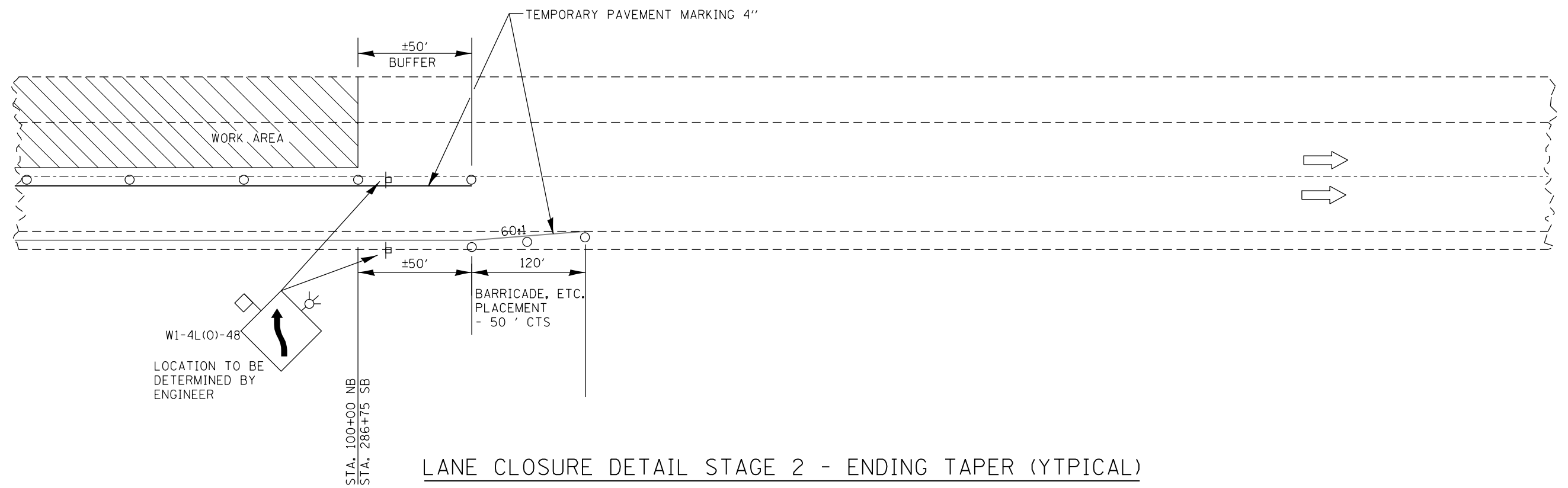


LANE CLOSURE DETAIL STAGE 2 - BEGINNING TAPER (TYPICAL)
 NORTHBOUND & SOUTHBOUND

TRAFFIC CONTROL DEVICES SHOWN TO BE INCLUDED IN COST OF TC & P 701401 (SPECIAL)



LANE CLOSURE DETAIL STAGE 2 - ENDING TAPER (TYPICAL)
 NORTHBOUND & SOUTHBOUND

FILE NAME =	USER NAME = duncanbd	DESIGNED -	REVISED -	STATE OF ILLINOIS DEPARTMENT OF TRANSPORTATION	TRAFFIC CONTROL STAGING				F.A.I. RTE.	SECTION	COUNTY	TOTAL SHEETS	SHEET NO.		
et:\pw\work\p\dot\duncanbd\0315542\03653-sht-staging and TC.dgn	DRAWN -	REVISED -	REVISED -		SCALE:	SHEET	OF	SHEETS	STA.	TO STA.	57	(38-3RS-2)	IROQUOIS	186	40
PLOT SCALE = 100.0000' / in.	CHECKED -	REVISED -	REVISED -						CONTRACT NO. 66C53						
PLOT DATE = 6/10/2014	DATE -	REVISED -	REVISED -						ILLINOIS FED. AID PROJECT						