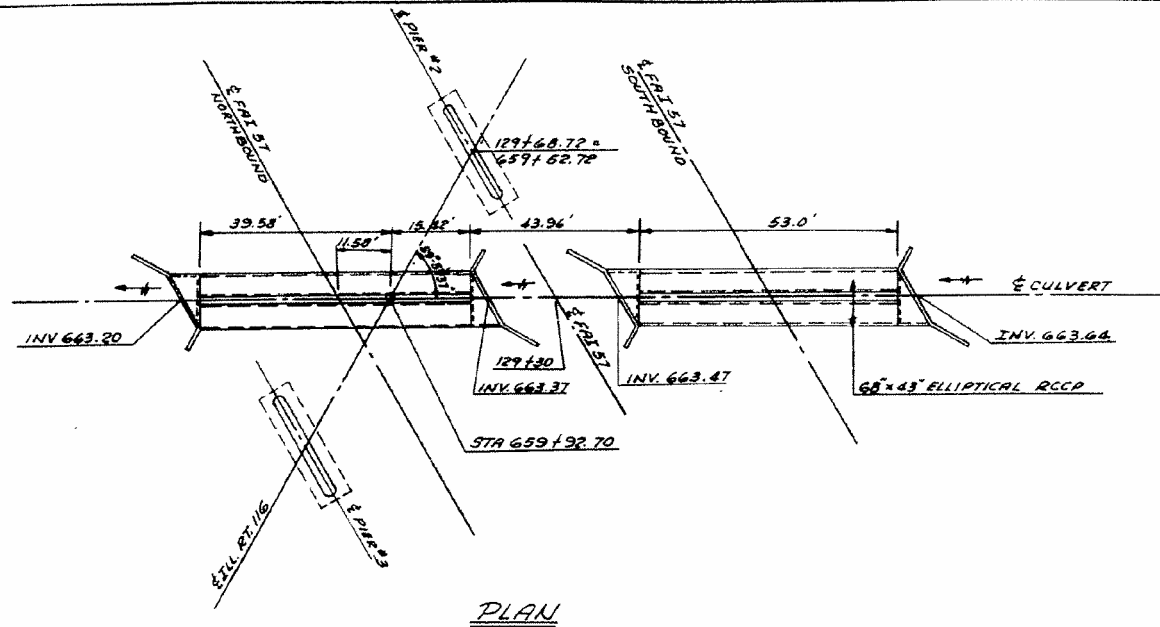


GENERAL NOTES

CLASS X CONCRETE SHALL BE USED THROUGHOUT.  
 EXPOSED EDGES SHALL BE BEVELED 3/4".  
 FOR BACKFILL AND EMBANKMENT SEE STANDARD SPECIFICATIONS.  
 ALL BARS SHALL BE LAPPED 20 DIAMETERS UNLESS OTHERWISE SPECIFIED.

THE TOP OF THE CULVERT, THE BACKS OF THE SIDEWALLS ABOVE THE LOWER CONSTRUCTION JOINT AND BACKS OF THE WINGS ABOVE THE TOPS OF THE FOOTINGS SHALL BE WATERPROOFED IN ACCORDANCE WITH ARTICLE 51.21 OF THE STANDARD SPECIFICATIONS.

NON METALLIC WATER SEAL USED IN THE WINDWALL JOINTS SHALL EXTEND WITHIN 6" OF THE TOP OF THE HEADWALL.



1'-6"	FOR D BAR
2'-0"	FOR DL BAR
3'-2"	FOR L BAR
0'-3"	FOR L BAR
0'-4"	FOR DL BAR

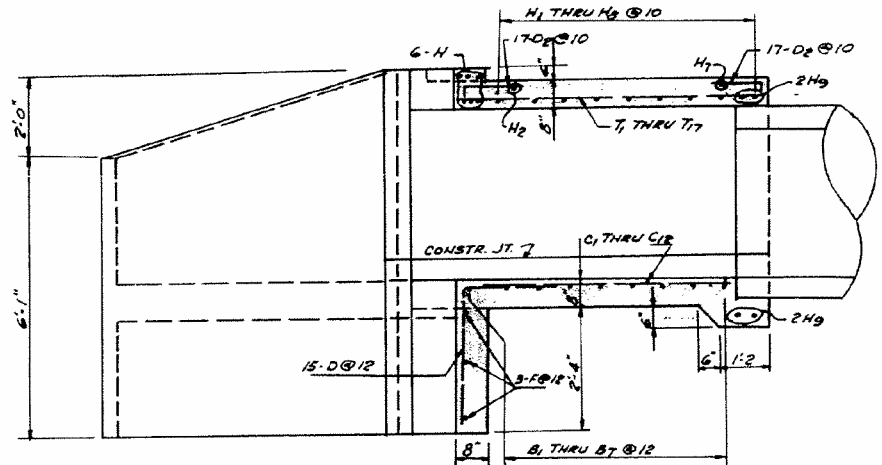
$f'_c = 20,000$  psi  
 $f'_s = 1,400$  psi BARREL  
 $f'_c = 1,000$  psi WING  
 $f'_c = 90$  psi BARREL  
 $f'_c = 75$  psi FOOTING  
 $n = 10$   
 LOAD 1.0 HS20

BILL OF MATERIALS  
 ONE HEADWALL

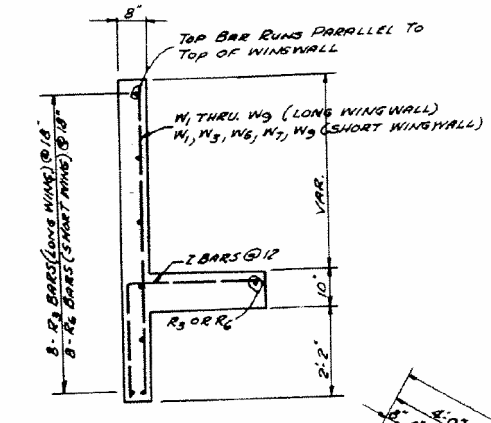
BAR	NO.	SIZE	LENGTH	BAR	NO.	SIZE	LENGTH
B <sub>1</sub>	1	4	15'-3"	T <sub>1</sub>	1	5	8'-3"
B <sub>2</sub>	1	4	13'-2"	T <sub>2</sub>	2	5	7'-10"
B <sub>3</sub>	1	4	11'-2"	T <sub>3</sub>	1	5	7'-5"
B <sub>4</sub>	1	4	9'-1"	T <sub>4</sub>	1	5	7'-0"
B <sub>5</sub>	1	4	7'-1"	T <sub>5</sub>	1	5	6'-7"
B <sub>6</sub>	1	4	5'-0"	T <sub>6</sub>	1	5	6'-2"
B <sub>7</sub>	1	4	3'-0"	T <sub>7</sub>	1	5	5'-9"
				T <sub>8</sub>	1	5	5'-4"
				T <sub>9</sub>	1	5	4'-11"
				T <sub>10</sub>	1	5	4'-6"
				T <sub>11</sub>	1	5	4'-1"
C <sub>1</sub>	1	4	8'-4"	T <sub>12</sub>	1	5	3'-8"
C <sub>2</sub>	2	4	7'-10"	T <sub>13</sub>	1	5	3'-3"
C <sub>3</sub>	1	4	6'-8"	T <sub>14</sub>	1	5	2'-10"
C <sub>4</sub>	1	4	6'-2"	T <sub>15</sub>	1	5	2'-5"
C <sub>5</sub>	1	4	5'-8"	T <sub>16</sub>	1	5	2'-0"
C <sub>6</sub>	1	4	5'-2"	T <sub>17</sub>	1	5	1'-6"
C <sub>7</sub>	1	4	4'-8"	T <sub>18</sub>	1	6	5'-0"
C <sub>8</sub>	1	4	4'-1"	T <sub>19</sub>	1	6	3'-6"
C <sub>9</sub>	3	4	4'-3"				
C <sub>10</sub>	1	4	3'-1"				
C <sub>11</sub>	1	4	2'-7"				
C <sub>12</sub>	1	4	2'-1"				
				L	5	4	5'-3"
D	15	4	4'-0"	R <sub>2</sub>	3	4	7'-8"
D <sub>1</sub>	20	4	4'-0"	R <sub>6</sub>	3	4	4'-6"
D <sub>2</sub>	34	4	2'-4"	S <sub>1</sub>	5	4	8'-3"
				S <sub>2</sub>	6	4	4'-6"
				V <sub>1</sub>	4	5	7'-9"
				V <sub>2</sub>	9	5	5'-1"
				V <sub>3</sub>	2	5	5'-7"
H <sub>1</sub>	1	5	14'-11"	W <sub>1</sub>	2	4	7'-8"
H <sub>2</sub>	2	5	13'-4"	W <sub>2</sub>	1	4	7'-5"
H <sub>3</sub>	1	5	11'-8"	W <sub>3</sub>	2	4	7'-2"
H <sub>4</sub>	1	5	10'-1"	W <sub>4</sub>	1	4	6'-11"
H <sub>5</sub>	1	5	8'-5"	W <sub>5</sub>	2	4	6'-8"
H <sub>6</sub>	1	5	6'-10"	W <sub>6</sub>	1	4	6'-5"
H <sub>7</sub>	2	5	5'-2"	W <sub>7</sub>	2	4	6'-2"
H <sub>8</sub>	1	5	3'-6"	W <sub>8</sub>	1	4	5'-11"
H <sub>9</sub>	4	6	15'-7"	W <sub>9</sub>	2	4	5'-8"
H <sub>10</sub>	4	4	3'-9"				
				Z	14	4	5'-10"

CLASS X CONCRETE CU. YDS. 10.8  
 REINFORCEMENT BARS LBS. 1071

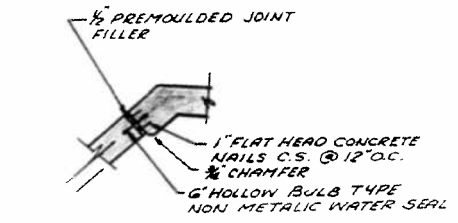
FAI 57 SEC 38-34B  
 FAI ROUTE 57  
 STA 129+30 LEFT



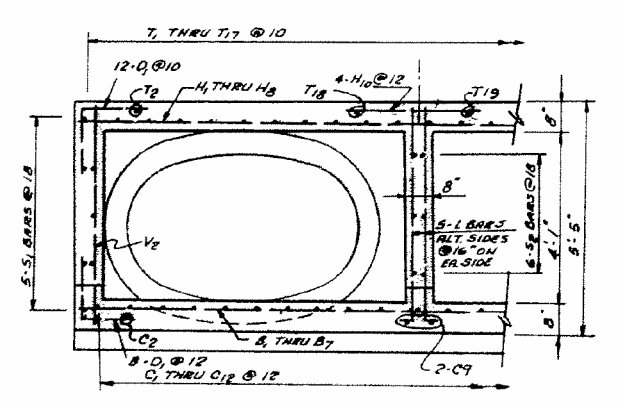
SECTION C-C



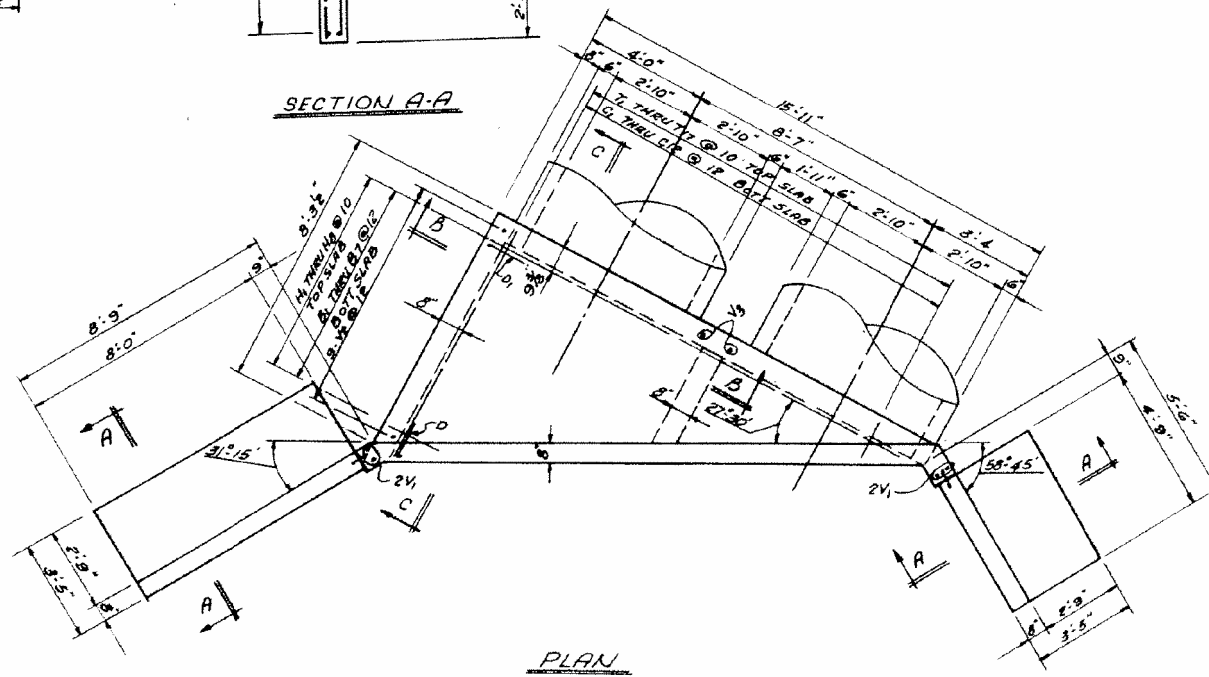
SECTION A-A



CORNER DETAIL



SECTION B-B



PLAN