

| F.A.S. RTE. | SECTION | COUNTY | TOTAL SHEETS | SHEET NO. |
|-------------|-----------|--------------|--------------------|-----------|
| 1375 | 18,10RS-4 | PEORIA/STARK | 33 | J |
| ILLINOIS | | | CONTRACT NO. 68A95 | |

INDEX OF SHEETS:

- 1 COVER SHEET
- 2-3 COMMITMENT, GENERAL NOTES AND JOB SPECIFIC
- 4-6 SUMMARY OF QUANTITIES
- 7-10 TYPICAL SECTIONS
- 11-14 SCHEDULE OF QUANTITIES
- 15 LINE DIAGRAM
- 16 -17 INTERSECTIONS RESURFACING DETAILS
- 18-23 ADA RAMPS DETAILS
- 24- 33 DISTRICT STANDARD

HIGHWAY STANDARDS

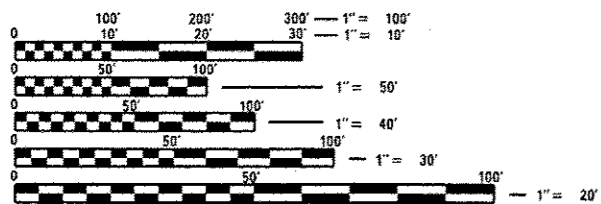
| | | |
|-----------|-----------|-----------|
| 000001-06 | 701006-05 | 701801-05 |
| 424001-07 | 701011-04 | 701901-03 |
| 424006-01 | 701201-04 | 780001-04 |
| 424011-01 | 701301-04 | |
| 424021-02 | 701306-03 | |
| 604051-03 | 701311-03 | |
| 606001-05 | 701501-06 | |

*** CADD STANDARDS**

- 406101-D4
- 406201-D4
- 406301-D4
- 406401-D4
- 423002-D4
- 424101-D4
- 440001-D4

* INCLUDED AS PLAN SHEETS 24-33.

ADT = 2250 (2011)
 PV = 94%
 MU = 3.5%
 SU = 2.5%
 MAJOR COLLECTOR (RURAL)
 DESIGN (POSTED) SPEED: 55 MPH



FULL SIZE PLANS HAVE BEEN PREPARED USING STANDARD ENGINEERING SCALES. REDUCED SIZED PLANS WILL NOT CONFORM TO STANDARD SCALES. IN MAKING MEASUREMENTS ON REDUCED PLANS, THE ABOVE SCALES MAY BE USED.

J.U.L.I.E.
 JOINT UTILITY LOCATION INFORMATION FOR EXCAVATION
 1-800-892-0123
 OR 811

PROJECT ENGINEER: CHRISTOPHER MAUSHARD (309)671-3453
 PROJECT MANAGER: SOBHI LABABIDI (309) 671-3460

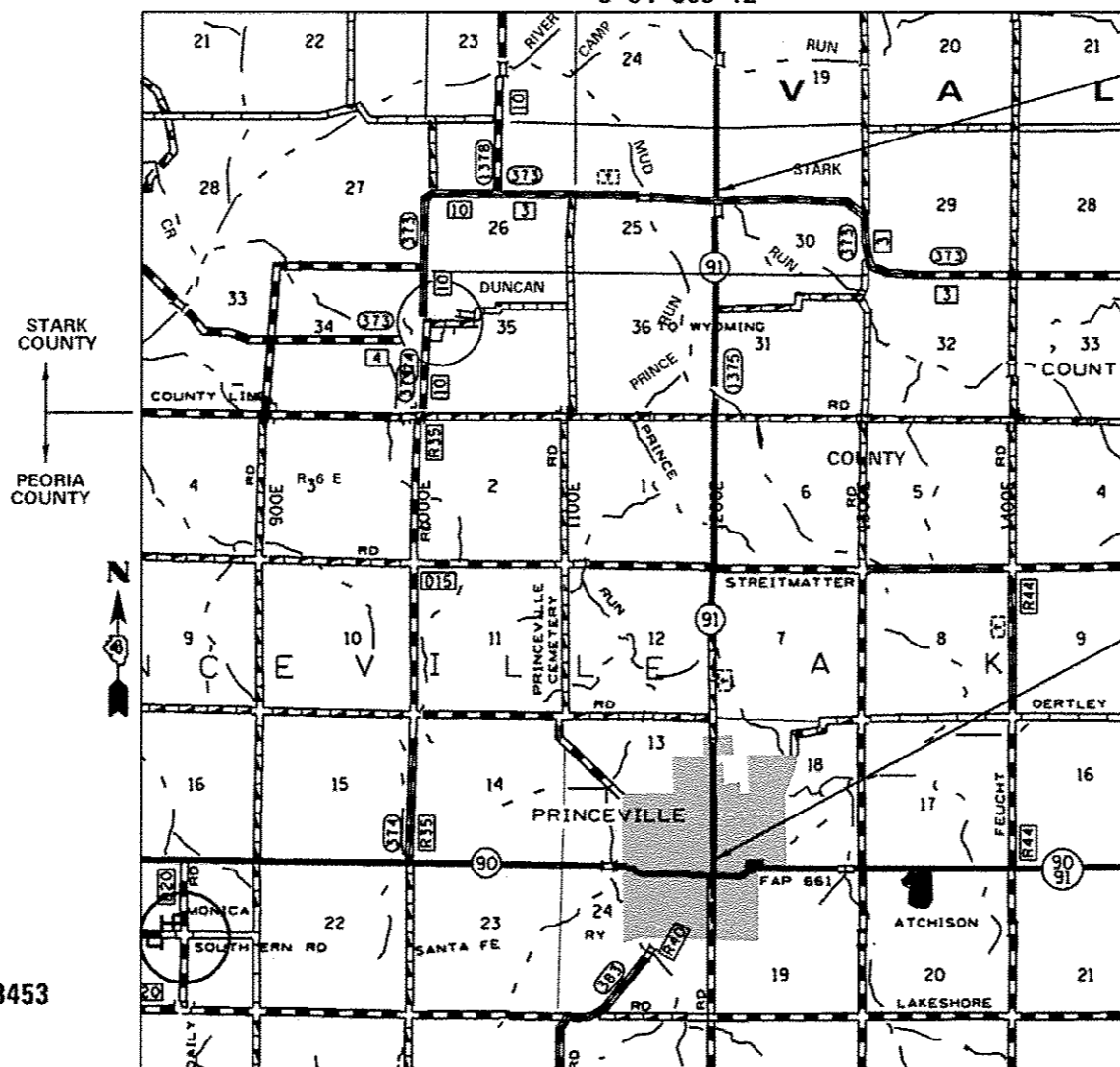
CATALOG NO. 034781-00D
 CONTRACT NO. 68A95

STATE OF ILLINOIS
DEPARTMENT OF TRANSPORTATION
DIVISION OF HIGHWAYS
PROPOSED
HIGHWAY PLANS

FAS ROUTE 1375 (IL 91)
SECTION (8,10)RS-4

TYPE of IMPROVEMENT RESURFACING
PEORIA & STARK COUNTY

C-94-065-12



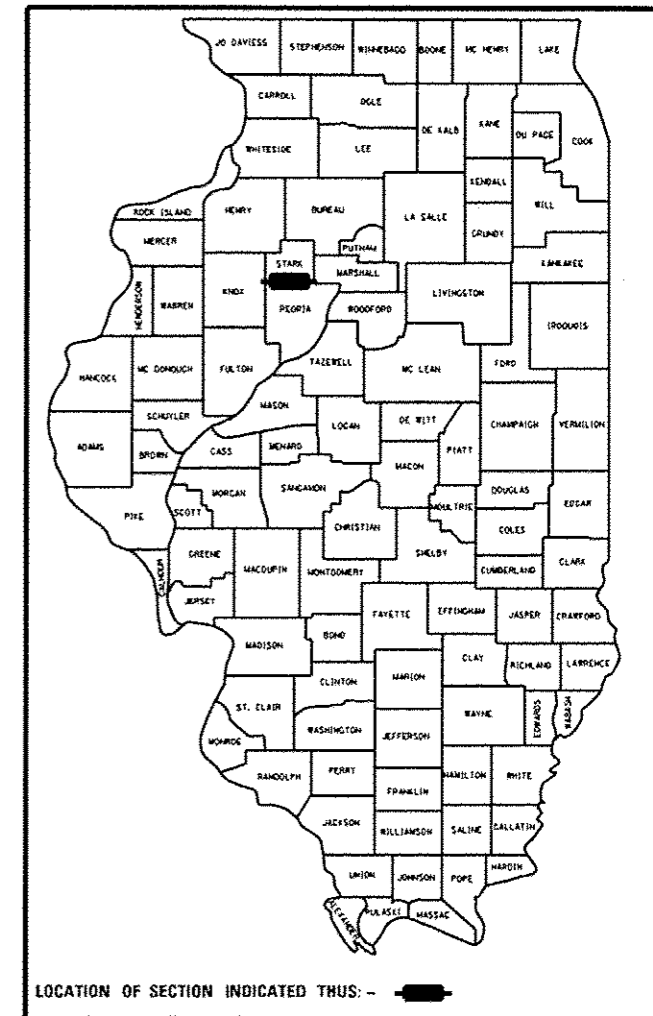
IMPROVEMENT ENDS
 STA. 284 + 66

PROJECT DESCRIPTION :
 RESURFACING ON IL 91 FROM IL 90 IN PRINCEVILLE TO STARK-SPEER ROAD

EXISTING STRUCTURES:
 SN # 072-0188 (NORTH CREEK)
 SN # 088-0028 (PRINCE RUN CREEK)
 SN # 088-0023 (MUD CREEK)

IMPROVEMENT BEGINS
 STA. 42 + 33

GROSS LENGTH = 24,233 FT. = 4.590 MILE
 NET LENGTH = 23,653 FT. = 4.480 MILE



STATE OF ILLINOIS
 DEPARTMENT OF TRANSPORTATION
 DIVISION OF HIGHWAYS

SUBMITTED June 13 2014
Ronald A. Garnett, P.E.
 DEPUTY DIRECTOR OF HIGHWAYS, REGION ENGINEER

July 18 2014
John D. Baranzoli, P.E.
 ENGINEER OF DESIGN AND ENVIRONMENT

July 18 2014
Omer Osman, P.E.
 DIRECTOR OF HIGHWAYS, CHIEF ENGINEER

PRINTED BY THE AUTHORITY
OF THE STATE OF ILLINOIS