

STATE OF ILLINOIS  
DEPARTMENT OF TRANSPORTATION  
DIVISION OF HIGHWAYS

**PROPOSED  
HIGHWAY PLANS**

F.A.P. ROUTE 693 (IL 9)  
SECTION (FR)RS-1

RESURFACING (3P)  
MCLEAN COUNTY

C-95-014-10

ROYAL POINTE DR TO E OF TOWANDA-BARNES RD IN BLOOMINGTON

|             |          |          |                    |           |
|-------------|----------|----------|--------------------|-----------|
| F.A.P. RTE. | SECTION  | COUNTY   | TOTAL SHEETS       | SHEET NO. |
| 693         | (FR)RS-1 | MCLEAN   | 48                 | 1         |
|             |          | ILLINOIS | CONTRACT NO. 70787 |           |

FOR INDEX OF SHEETS, SEE SHEET NO. 2  
FOR SUMMARY OF QUANTITIES, SEE SHEET NO. 6-9

**CURRENT TRAFFIC DATA**

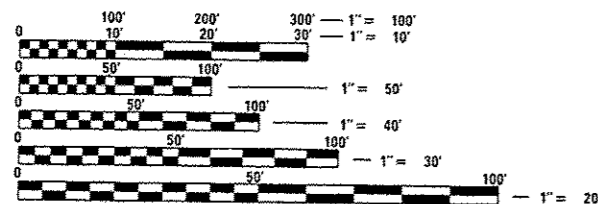
FAP ROUTE 693 (IL 9)

|               | LEG "A" | LEG "B" | LEG "C" |
|---------------|---------|---------|---------|
| 2012 ADT =    | 17,700  | 15,400  | 3,750   |
| 2022 ADT =    | 21,100  | 18,500  | 4,100   |
| 2032 ADT =    | 24,400  | 21,600  | 4,500   |
| DHV           | 2,155   | 2,280   | 445     |
| P.U. & P.C. % | 95.8    | 96.5    | 93.4    |
| SU %          | 3.1     | 2.3     | 3.4     |
| MU %          | 1.1     | 1.2     | 3.2     |

Leg "A" is from Royal Point Dr. to Airport Rd.  
Leg "B" is from Airport Rd. to Towanda-Barnes Bd.  
Leg "C" is East of Towanda-Barnes.

**DESIGN DESIGNATION**

OTHER PRINCIPAL ARTERIAL

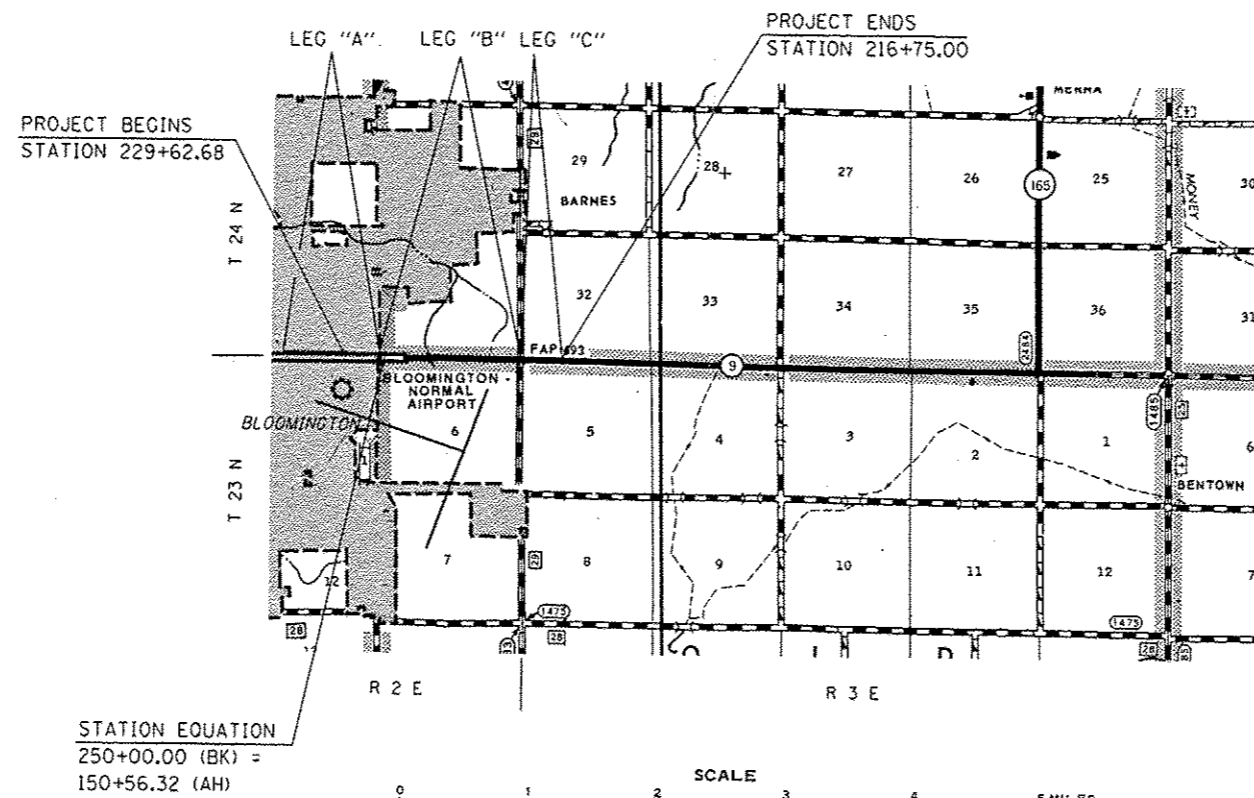


FULL SIZE PLANS HAVE BEEN PREPARED USING STANDARD ENGINEERING SCALES. REDUCED SIZED PLANS WILL NOT CONFORM TO STANDARD SCALES. IN MAKING MEASUREMENTS ON REDUCED PLANS, THE ABOVE SCALES MAY BE USED.

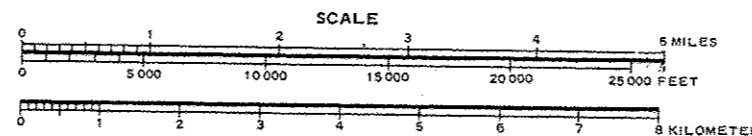
J.U.L.I.E.  
JOINT UTILITY LOCATION INFORMATION FOR EXCAVATION  
1-800-892-0123  
OR 811 TOWNSHIPS: TOWANDA, OLD TOWN

PROJECT ENGINEER: JASON STULTS  
SQUAD LEADER: RYAN CARROLL  
DESIGNER: AVOREE GORE  
(217)465-4181

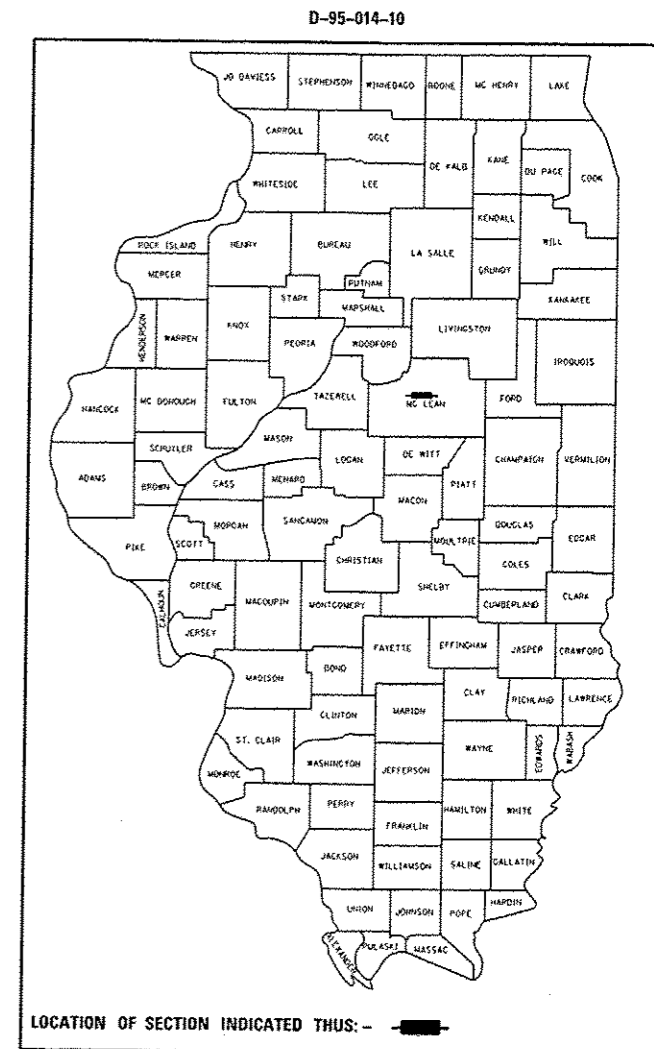
CONTRACT NO. 70787



STATION EQUATION  
250+00.00 (BK) =  
150+56.32 (AH)



GROSS LENGTH OF PROJECT = 8,706.00 FT. = 1.649 MILES  
NET LENGTH OF PROJECT = 8,706.00 FT. = 1.649 MILES



STATE OF ILLINOIS  
DEPARTMENT OF TRANSPORTATION  
DIVISION OF HIGHWAYS

SUBMITTED June 12, 2014

Jason Stults  
DEPUTY DIRECTOR OF HIGHWAYS, REGION 3 ENGINEER

John D. Baranzelli PE  
ENGINEER OF DESIGN AND ENVIRONMENT

Ernest Osman PE  
DIRECTOR OF HIGHWAYS, CHIEF ENGINEER

PRINTED BY THE AUTHORITY  
OF THE STATE OF ILLINOIS