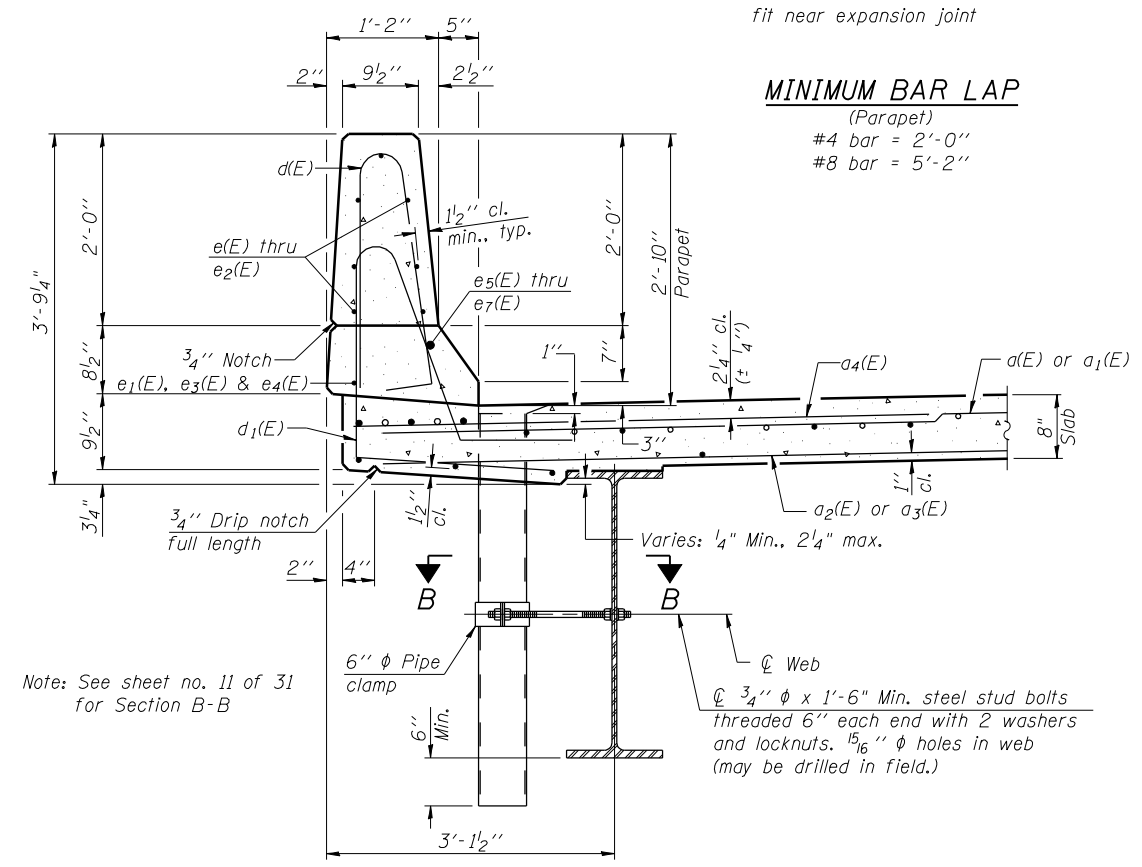


Aluminum sheeted joints in base of parapet

*Field cut bars to fit near expansion joint

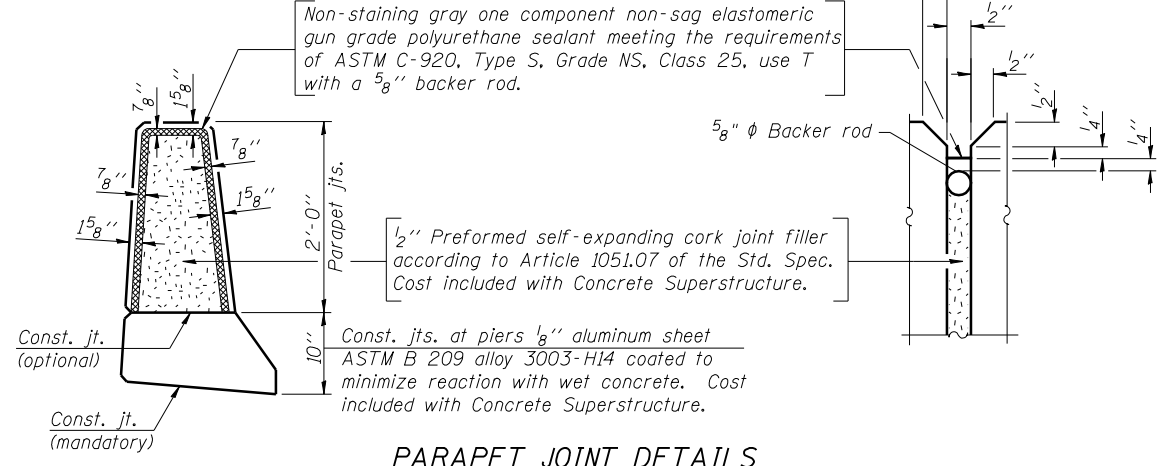
INSIDE ELEVATION OF PARAPET



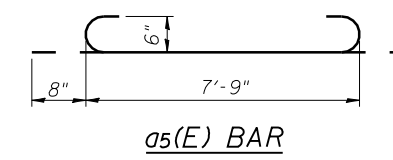
SECTION THRU PARAPET

Note: See sheet no. 11 of 31 for Section B-B

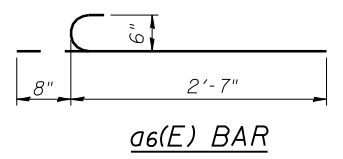
MINIMUM BAR LAP
 (Parapet)
 #4 bar = 2'-0"
 #8 bar = 5'-2"



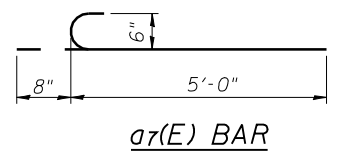
PARAPET JOINT DETAILS



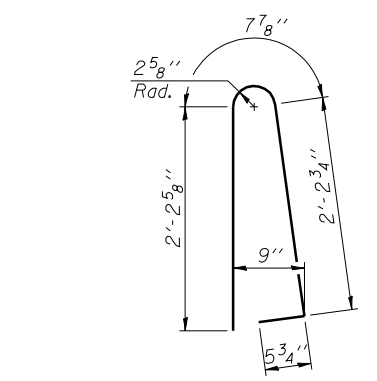
a5(E) BAR



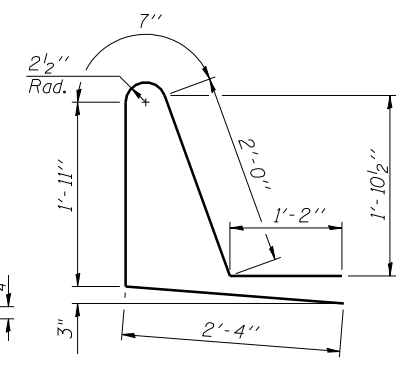
a6(E) BAR



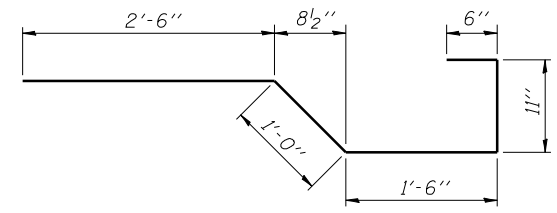
a7(E) BAR



BAR d(E)



BAR d1(E)



BAR x(E)

SUPERSTRUCTURE
 BILL OF MATERIAL

Bar	No.	Size	Length	Shape
a(E)	354	#5	18'-0"	—
a1(E)	355	#5	20'-0"	—
a2(E)	212	#5	17'-11"	—
a3(E)	213	#5	19'-11"	—
a4(E)	698	#6	6'-6"	—
a5(E)	24	#6	9'-1"	—
a6(E)	6	#6	3'-3"	—
a7(E)	6	#6	5'-8"	—
a8(E)	8	#5	22'-1"	—
a9(E)	8	#5	24'-5"	—
a10(E)	2	#6	21'-10"	—
a11(E)	2	#6	24'-3"	—
a2(E)	32	#5	1'-6"	—
b(E)	252	#5	32'-0"	—
b1(E)	78	#6	33'-8"	—
b2(E)	252	#5	27'-9"	—
d(E)	392	#5	5'-7"	—
d1(E)	392	#5	8'-0"	—
e(E)	84	#4	15'-0"	—
e1(E)	64	#4	8'-6"	—
e2(E)	42	#4	16'-9"	—
e3(E)	8	#4	24'-0"	—
e4(E)	4	#4	26'-6"	—
e5(E)	8	#8	25'-7"	—
e6(E)	8	#8	8'-6"	—
e7(E)	4	#8	28'-1"	—
x(E)	60	#5	6'-5"	—
Reinforcement Bars, Epoxy Coated		Pound	58750	
Concrete Superstructure		Cu. Yds.	238.3	

Bars indicated thus 1 x 2 -#8 etc. indicates 1 line of bars with 2 lengths per line.



USER NAME = has	DESIGNED - SHL 12/11	REVISED -
ESCA PROJECT NO. 933.14	CHECKED - ELH/RDP 01/14	REVISED -
PLOT SCALE = 0/2" = 1' / IN.	DRAWN - HAS 12/11	REVISED -
PLOT DATE = 6/10/2014 8:49:54 AM	CHECKED - SHL 12/11	REVISED -

F.A.P. RTE.	SECTION	COUNTY	TOTAL SHEETS	SHEET NO.
332	(12,B2)B-1	WABASH	68	30
		CONTRACT NO. 74219		
ILLINOIS FED. AID PROJECT				