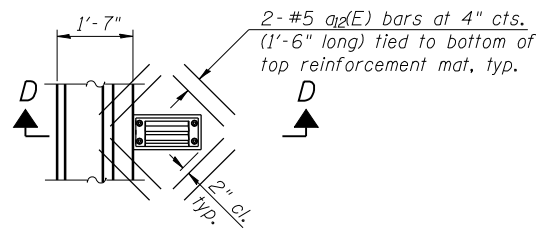


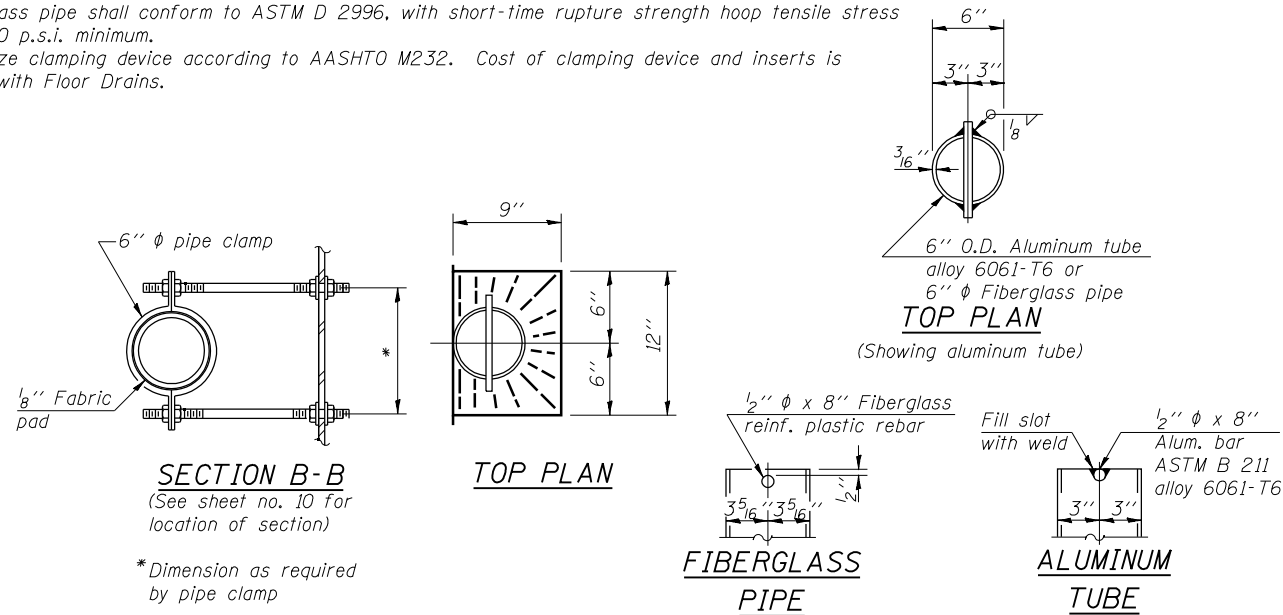
SECTION D-D



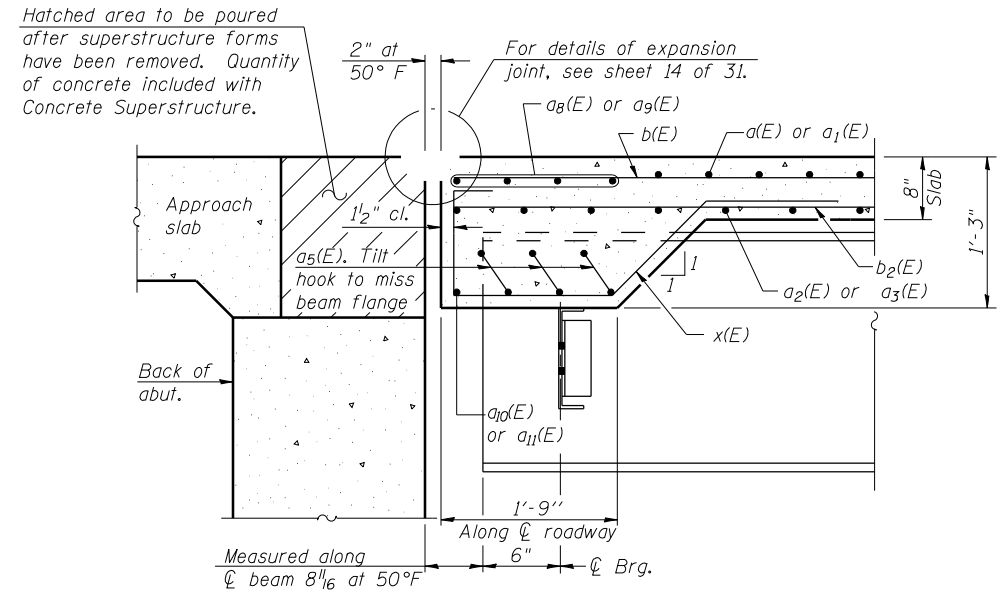
PLAN AT SCUPPER

Note:
Cut longitudinal reinforcement to clear drainage scuppers.

Notes:
Drains shall be located clear of all diaphragms.
The exterior surfaces of the floor drains shall be painted with the finish coat as specified in Section 506 of the Standard Specifications. The exterior surfaces of the drains shall be cleaned according to the Society of Protective Coatings Spec. SSPC-SP1 prior to painting.
Fiberglass pipe shall conform to ASTM D 2996, with short-time rupture strength hoop tensile stress of 30,000 p.s.i. minimum.
Galvanize clamping device according to AASHTO M232. Cost of clamping device and inserts is included with Floor Drains.



FLOOR DRAIN DETAILS



SECTION C-C

(See sheet no. 9 of 31 for location of section)

PRINT DRIVER = LUD-ER-BA-01
 PLOT DATE = 6/10/2014
 PLOT SCALE = 1/4" = 1'-0"
 PLOT NAME = 093314-11-50011.dwg



USER NAME = has	DESIGNED - SHL 12/11	REVISED -
ESCA PROJECT NO. 933.14	CHECKED - ELH/RDP 01/14	REVISED -
PLOT SCALE = 1/4" = 1'-0"	DRAWN - DWH 12/11	REVISED -
PLOT DATE = 6/10/2014 8:50:12 AM	CHECKED - ELH 12/11	REVISED -

**STATE OF ILLINOIS
DEPARTMENT OF TRANSPORTATION**

**SUPERSTRUCTURE DETAILS
STRUCTURE NO. 093-0025**

SHEET NO. 11 OF 31 SHEETS

F.A.P. RTE.	SECTION	COUNTY	TOTAL SHEETS	SHEET NO.
332	(12,B2)B-1	WABASH	68	31
CONTRACT NO. 74219				
ILLINOIS FED. AID PROJECT				