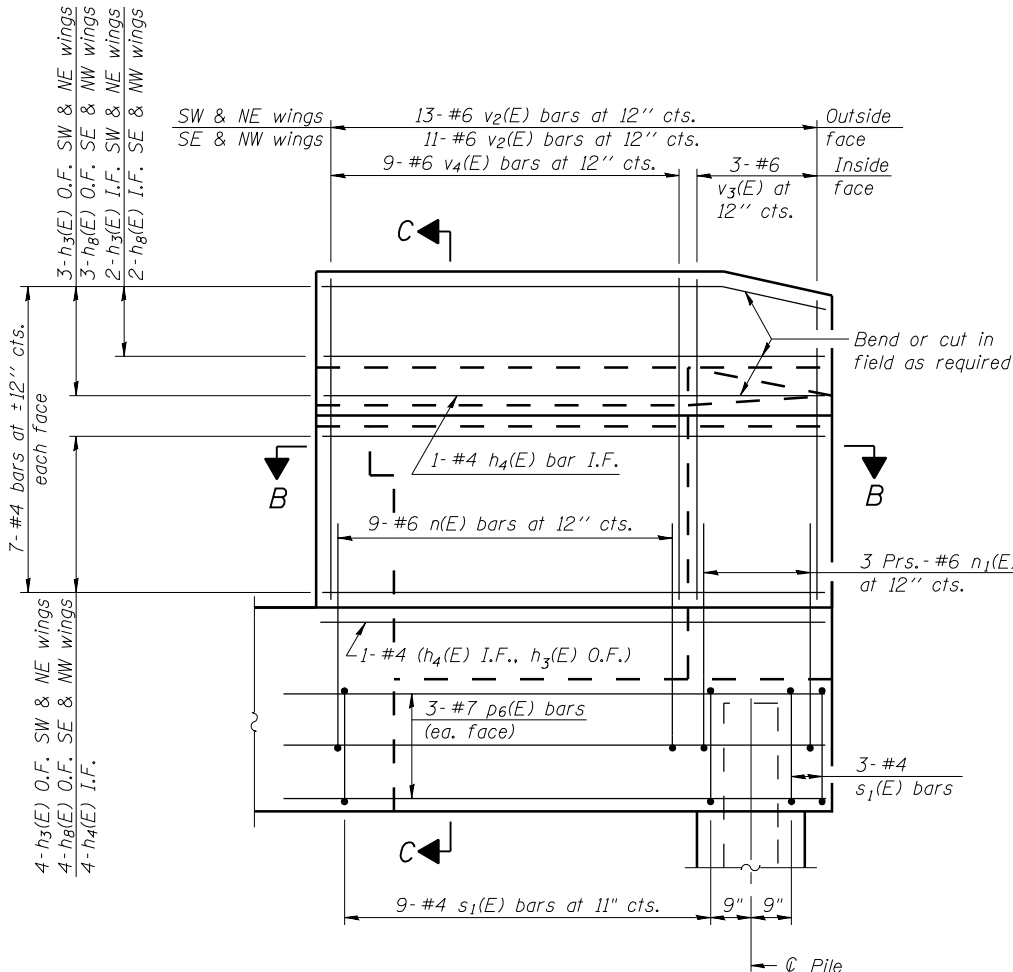
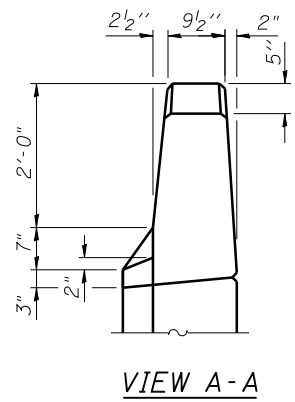
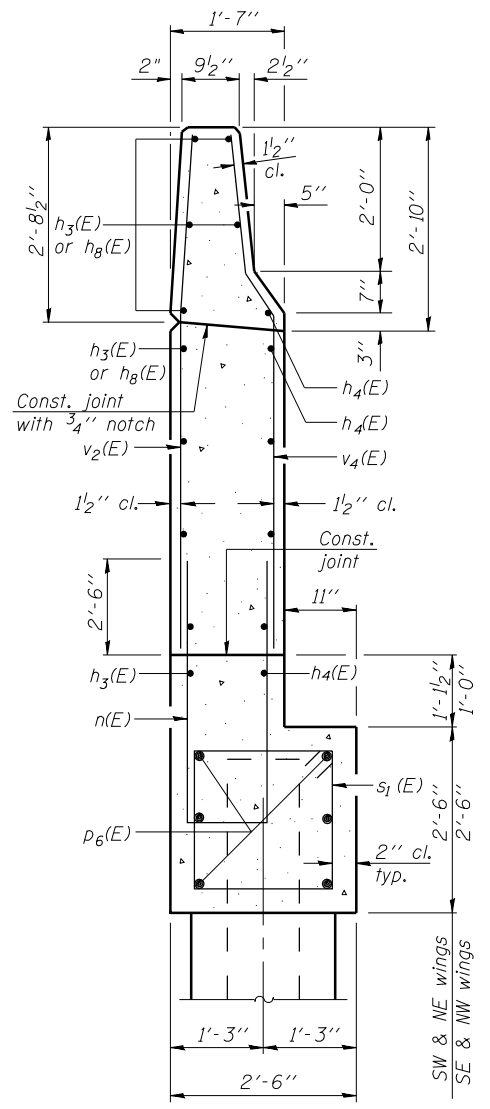


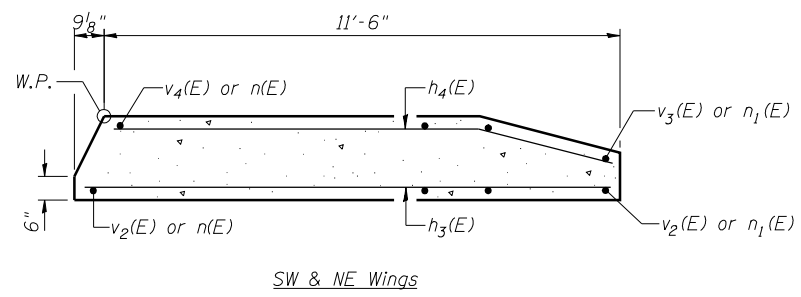
WING WALL ELEVATION
Showing Dimensions



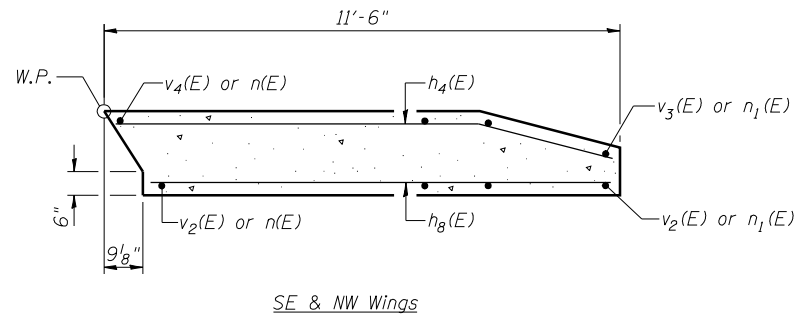
WING WALL ELEVATION
Showing Reinforcement



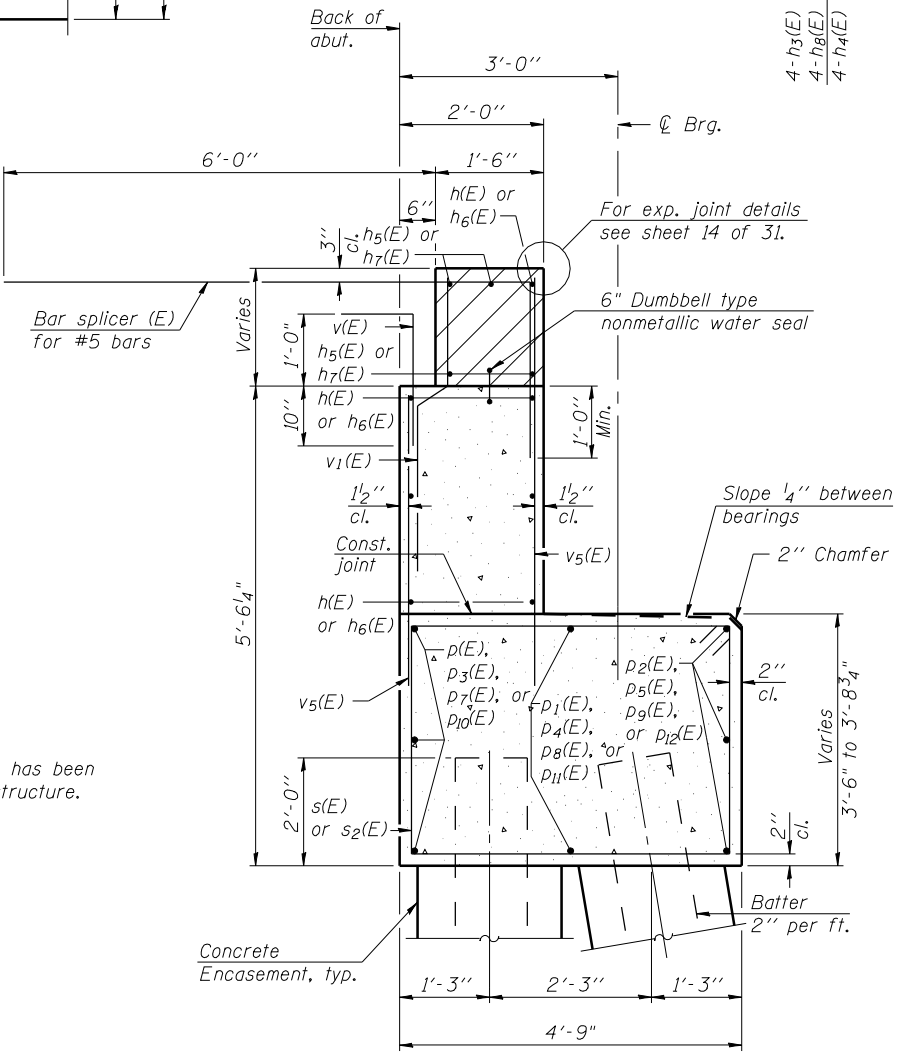
SECTION C-C



SECTION B-B



Notes:
Hatched area to be poured after superstructure false work has been removed. Quantity of concrete included with Concrete Superstructure. Space reinforcement in cap to miss anchor bolts. Pour steps monolithically with cap. Quantity of concrete in end post included with Concrete Superstructure on sheet 10 of 31. For Concrete Encasement details, see sheet 24 of 31. Space reinforcement in end post to miss bolts for Traffic Barrier Terminal, Type 6.



PRINT DRIVER: L:\05-ESCA\B\11
SCALE: 1/4" = 1'-0"
FILE NAME: 093314.DWG
DATE: 6/10/2014 8:53:04 AM



USER NAME = hos	DESIGNED - ELH 12/12	REVISED -
ESCA PROJECT NO. 933.14	CHECKED - RDP 04/13	REVISED -
PLOT SCALE = 1/4" = 1'-0"	DRAWN - DWH 12/12	REVISED -
PLOT DATE = 6/10/2014 8:53:04 AM	CHECKED - ELH 12/12	REVISED -

STATE OF ILLINOIS
DEPARTMENT OF TRANSPORTATION

ABUTMENT DETAILS
STRUCTURE NO. 093-0025

SHEET NO. 21 OF 31 SHEETS

F.A.P. RTE. 332	SECTION (12,B2)B-1	COUNTY WABASH	TOTAL SHEETS 68	SHEET NO. 41
				CONTRACT NO. 74219
ILLINOIS FED. AID PROJECT				