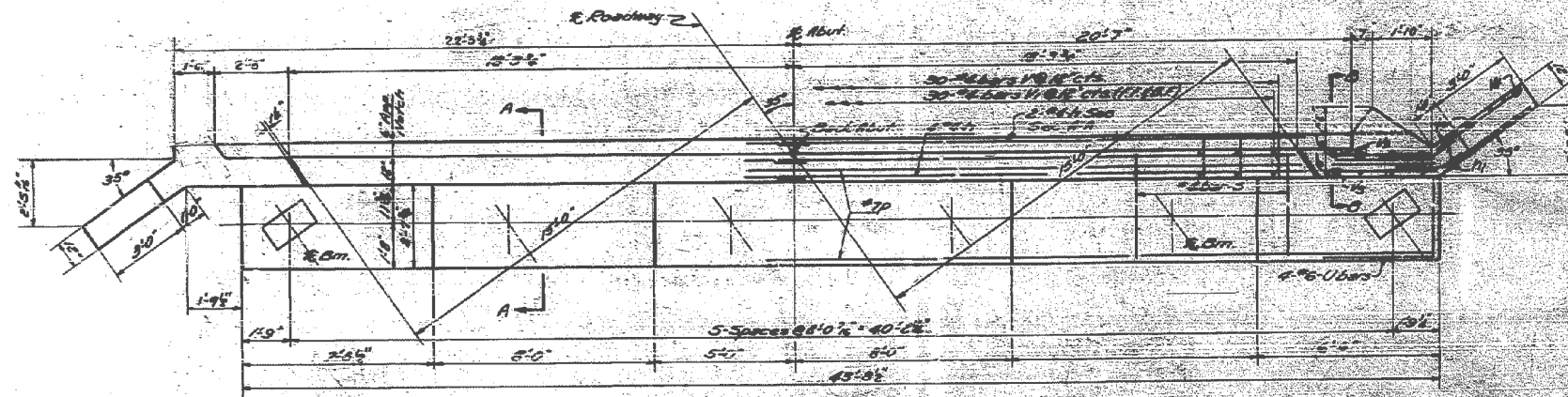
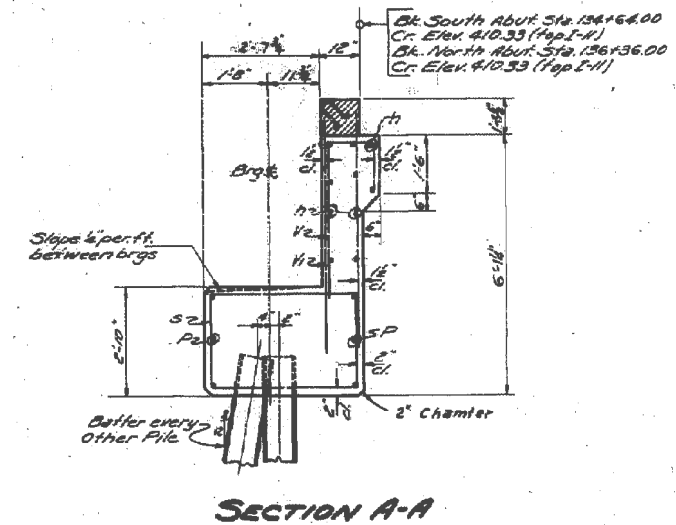
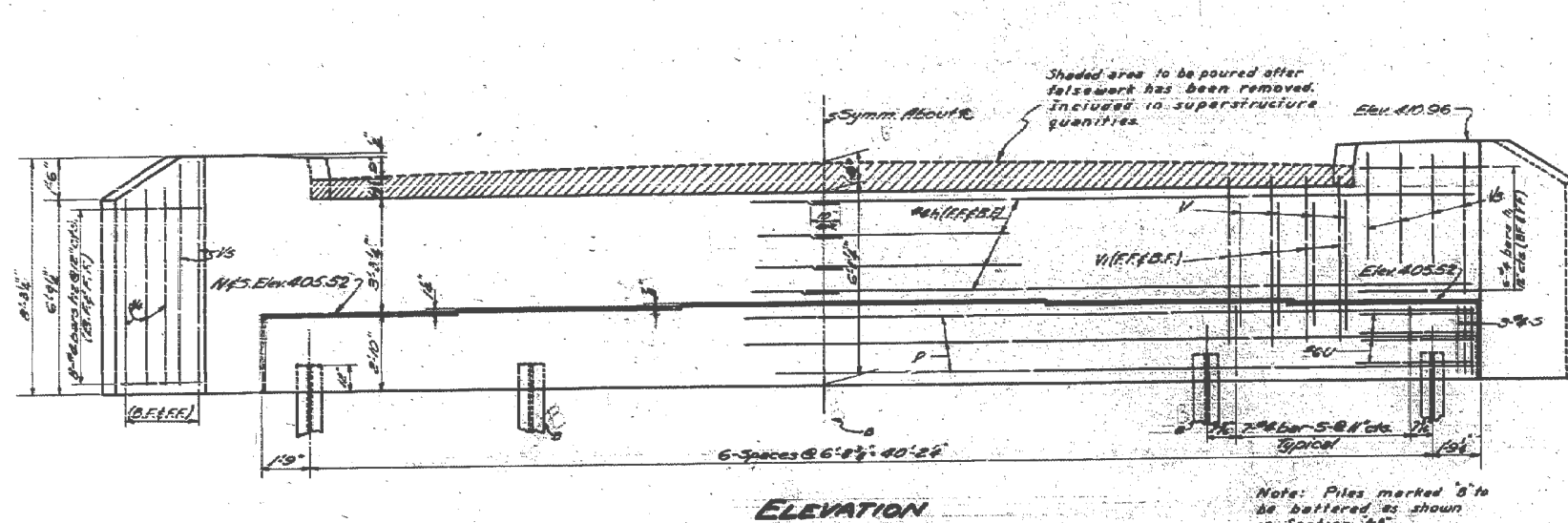


STATE OF ILLINOIS  
DEPARTMENT OF PUBLIC WORKS & BUILDINGS  
DIVISION OF HIGHWAYS

ROUTE NO.	SECTION	COUNTY	TOTAL SHEETS	SHEET NO.
12-B-2	Wabash	11	9	6 SHEETS

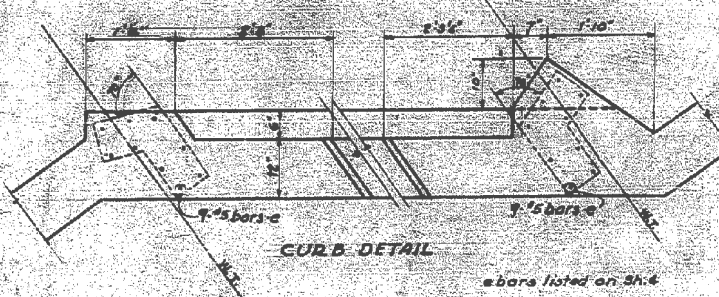
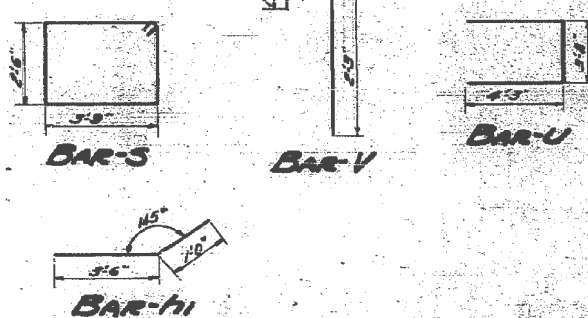
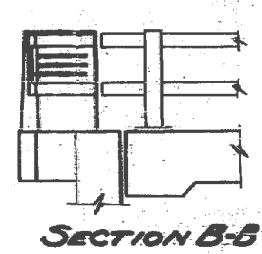


**PILE DATA**

Capacity	40 Piles
Est. Length	25 - 31
No. Piles	16 (2 Abut.)
10.20' 12	

**BILL OF MATERIAL - 2 ABUTS.**

Bar	No.	Size	Length	Shape
h	40	#4	25'-0"	
hi	48	#4	6'-6"	
hi	62	#4	2'-0"	
P	12	#7	43'-3"	
S	96	#4	12'-0"	
U	16	#6	11'-0"	
V	60	#4	6'-9"	
W	120	#4	4'-6"	
12	32	#4	6'-0"	
14	28	#4	6'-6"	
15	16	#4	7'-9"	
Class X Concrete			Cu Yds.	300
Reinforcement Bars			Lbs.	3300
Pile Piles (Steel)			Each	One
Steel Piles			Lin. Ft.	299



DESIGNED Frank A. Curran  
CHECKED Edward A. Givens  
DRAWN E. Rush  
CHECKED F.D.C.

EXAMINED M. Romine  
APPROVED R.L. Bost  
DATE: June 2, 1955

**2-ABUTMENTS  
CRAWFISH CREEK  
S.B.I. RT. 1 SEC. 12-B-2  
WABASH COUNTY  
STA. 135+50**



USER NAME = has	DESIGNED - MTD	REVISED -
ESCA PROJECT NO. 933.14	CHECKED - RDP	REVISED -
PLOT SCALE = 0.1667" / IN.	DRAWN - HAS	REVISED -
PLOT DATE = 6/10/2014	CHECKED - 01/31/13	REVISED -

STATE OF ILLINOIS  
DEPARTMENT OF TRANSPORTATION

EXISTING STRUCTURE PLANS - SN 093-0003  
FOR INFORMATION ONLY

F.A.P. RTE.	SECTION	COUNTY	TOTAL SHEETS	SHEET NO.
332	(12,B2)B-1	WABASH	68	56
CONTRACT NO. 74219			ILLINOIS FED. AID PROJECT	