

F.A.P. RTE.	SECTION	COUNTY	TOTAL SHEETS	SHEET NO.
42	13B-1	JACKSON	112	1
		ILLINOIS	CONTRACT NO. 78215	

STATE OF ILLINOIS  
DEPARTMENT OF TRANSPORTATION  
DIVISION OF HIGHWAYS

# PROPOSED HIGHWAY PLANS

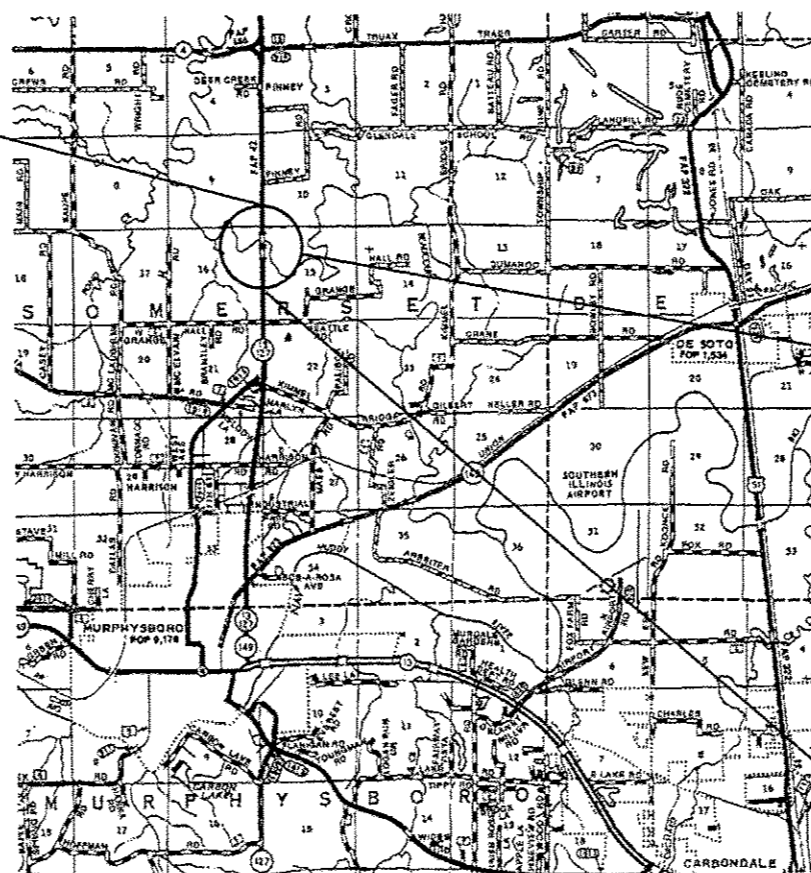
FAP ROUTE 42 (IL 13 /127)  
SECTION 13B-1

BEAUCOUP CREEK BRIDGE REPLACEMENT  
JACKSON COUNTY

C-99-074-10

R. 2 W.

T. 8 S.



PROPOSED PROJECT ENDS  
STATION 256+01.5

PROPOSED BRIDGE  
OVER BEAUCOUP CREEK  
STRUCTURE NUMBER 039-0077  
FOUR SPAN 46" WEB PLATE GIRDER BRIDGE  
422'-0" BK TO BK ABUTMENTS; 40' CLEAR WIDTH  
CENTERLINE STRUCTURE STATION 2601+44.00  
EXISTING STRUCTURE NUMBER 039-0009

PROPOSED PROJECT BEGINS  
STATION 207+35.00



GROSS LENGTH = 4871.48 FT. = 0.923 MILE  
NET LENGTH = 4871.48 FT. = 0.923 MILE

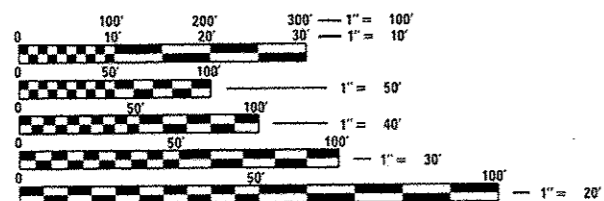
FOR INDEX OF SHEETS, SEE SHEET NO 3

**STATION EQUATIONS**  
PT STA 625+22.29 BK = STA 255+61.48 AH  
STA 207+75.33 BK = PC STA 577+31.15 AH

**OMISSIONS**  
NONE

**TRAFFIC DATA**  
2011 ADT = 5360 WITH 7.2% TRUCKS  
POSTED SPEED = 55 MPH

**TOWNSHIP**  
SOMERSET

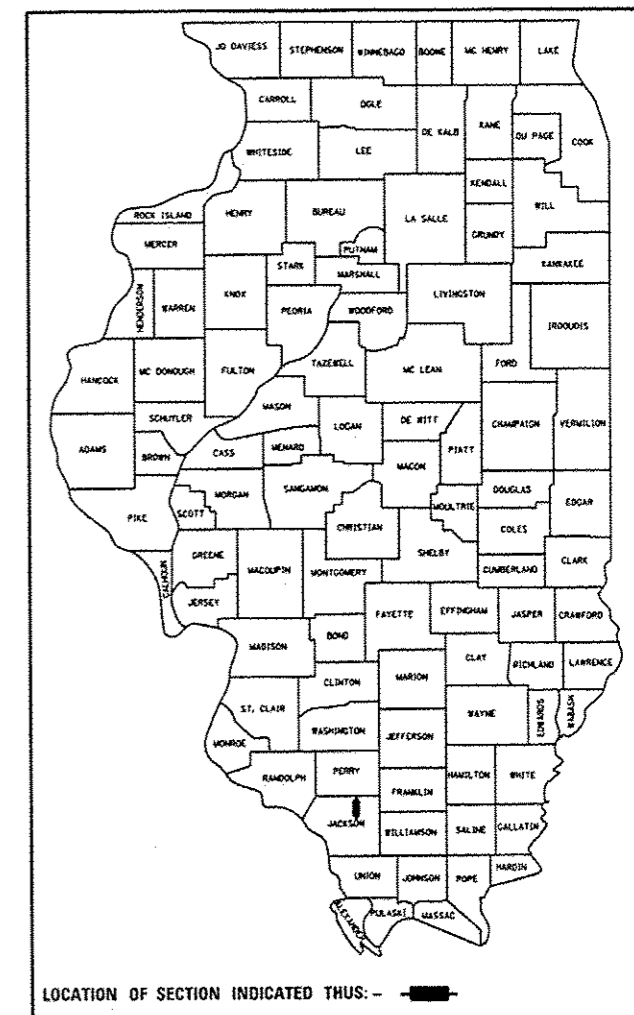


FULL SIZE PLANS HAVE BEEN PREPARED USING STANDARD ENGINEERING SCALES. REDUCED SIZED PLANS WILL NOT CONFORM TO STANDARD SCALES. IN MAKING MEASUREMENTS ON REDUCED PLANS, THE ABOVE SCALES MAY BE USED.

J.U.L.I.E.  
JOINT UTILITY LOCATION INFORMATION FOR EXCAVATION  
1-800-892-0123  
OR 811

PROJECT ENGINEER DARRYL LEFTWICH  
PROJECT MANAGER CHARLES STEIN

CONTRACT NO. 78215



LOCATION OF SECTION INDICATED THUS: - [shaded box] -

STATE OF ILLINOIS  
DEPARTMENT OF TRANSPORTATION  
DIVISION OF HIGHWAYS

SUBMITTED June 12, 2014  
Debra L. Keen  
DEPUTY DIRECTOR OF HIGHWAYS, REGION ENGINEER

July 18, 2014  
John D. Baranzelli, P.E.  
ENGINEER OF DESIGN AND ENVIRONMENT

July 18, 2014  
Orfer Osman, P.E.  
DIRECTOR OF HIGHWAYS, CHIEF ENGINEER

PRINTED BY THE AUTHORITY  
OF THE STATE OF ILLINOIS

PROJECT ENGINEER: CHARLES STEIN  
DESIGN ENGINEER: DARRYL LEFTWICH  
16181 549-2171  
CENTREX 782-4554