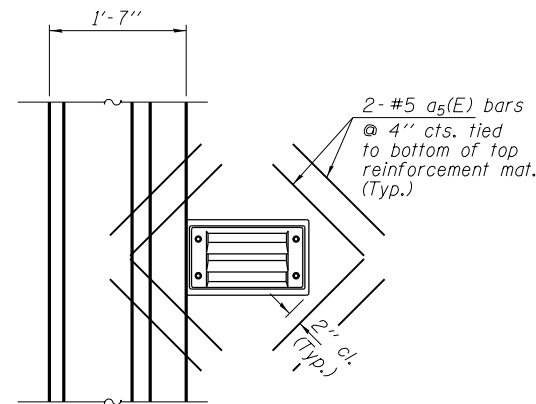


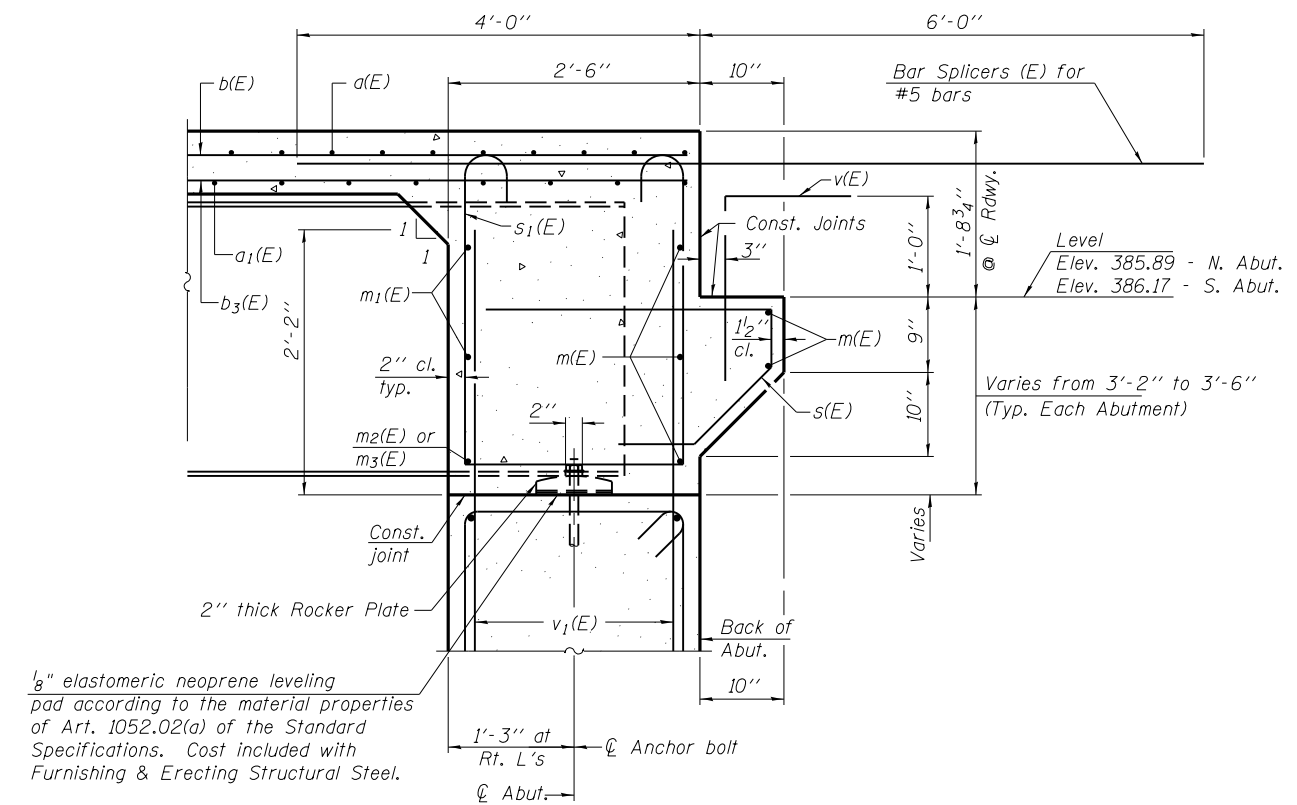
DIAPHRAGM ELEVATION AT ABUTMENT

Notes:
 Reinforcement bars in diaphragm are billed with superstructure on sheet 11 of 32.
 Concrete in diaphragm is included with Concrete Superstructure on sheet 11 of 32.
 The s(E) and s₁(E) bars shall be placed parallel to the girders. Spacing for these bars shall be at right angles to the girders.
 For bars splicer details see sheet 26 of 32.
 For details of bars s(E) & s₁(E) see sheet 11 of 32.

MIN. BAR LAP
 #6 bar = 3'-4"



PLAN VIEW AT DRAINAGE SCUPPERS
 (Shown at DS-11 Drainage Scupper)
 Cut longitudinal reinforcement to clear drainage scuppers.



SECTION A-A
 Dimensions at right angles to abutment, except as shown.

FILE NAME = c:\pwork\pwsdot\left\wchd\65362001239077-78215.dgn	DESIGNED - S.M.S.	REVISED -
3085 STEVENSON DRIVE, SUITE 201 SPRINGFIELD, ILLINOIS 62703 217.546.3400 www.hireengineering.com	CHECKED - C.C.S.	REVISED -
184.000989 ILLINOIS PROFESSIONAL DESIGN FIRM L.S. / P.E. / S.E. CORPORATION	DRAWN - D.A.B.	REVISED -
PLOT SCALE =	CHECKED - M.D.C.	REVISED -
PLOT DATE = 6/4/2014		

**STATE OF ILLINOIS
 DEPARTMENT OF TRANSPORTATION**

**INTEGRAL ABUTMENT DIAPHRAGM DETAILS
 STRUCTURE NO. 039-0077**

SHEET NO. 12 OF 32 SHEETS

FAP	SECTION	COUNTY	TOTAL SHEETS	SHEET NO.
42	13B-1	JACKSON	112	46
IL 13/127 OVER BEAUCOUP CR.		CONTRACT NO. 78215		

ILLINOIS FED. AID PROJECT