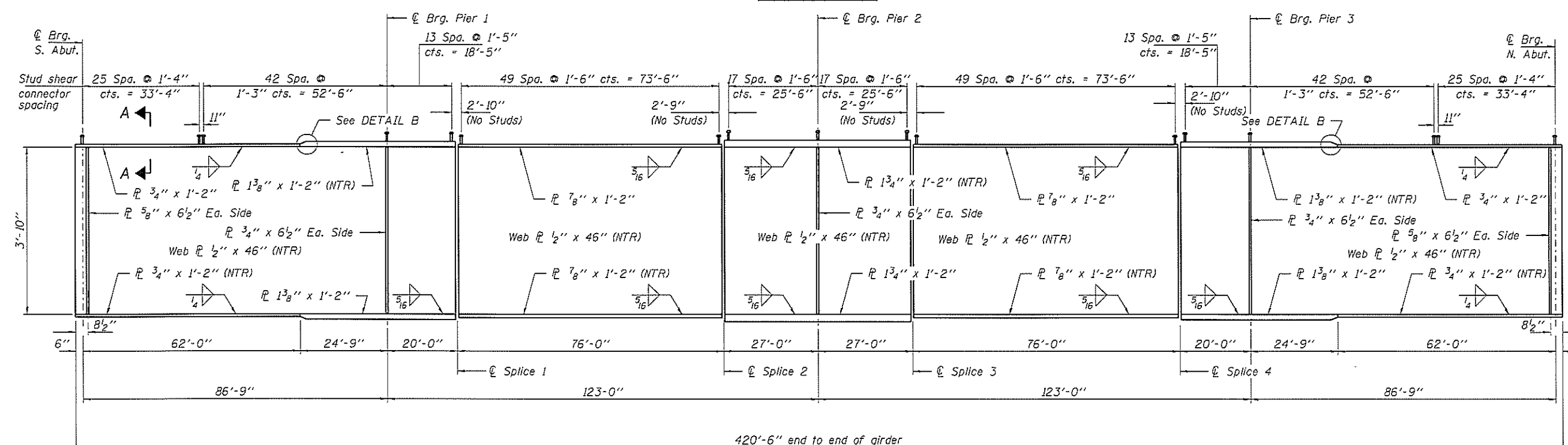


FRAMING PLAN

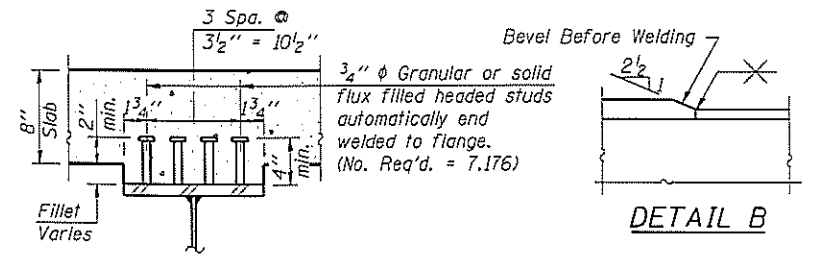


GIRDER ELEVATION

Note: Load carrying components designated "NTR" shall conform to the Impact Testing Requirement, Zone 2.

All girders and splices, including bearing stiffeners, shall be AASHTO M270 Grade 50W.

For additional structural steel details see sheets 17 thru 19 of 32.



SECTION A-A

DETAIL B

FILE NAME = #FILE#	USER NAME =	DESIGNED - S.M.S.	REVISED -	STATE OF ILLINOIS DEPARTMENT OF TRANSPORTATION	STRUCTURAL STEEL STRUCTURE NO. 039-0077 SHEET NO. 16 OF 32 SHEETS	FAP	SECTION	COUNTY	TOTAL SHEETS	SHEET NO.	
3005 STEVENSON DRIVE, SUITE 201 SPRINGFIELD, ILLINOIS 62703 217.246.3400 www.jhengineering.com	PLOT SCALE =	CHECKED - C.C.S.	REVISED -			42	138-1	JACKSON	112	50	
184.065528 ILLINOIS PROFESSIONAL DESIGN FIRM 131 P.E. REG. COOPERATION	PLOT DATE = 7/15/2014	DRAWN - D.A.B.	REVISED -			IL 13/127 OVER BEAUCOUP CR. CONTRACT NO. 78215					
		CHECKED - M.D.C.	REVISED -			ILLINOIS FED. AID PROJECT					