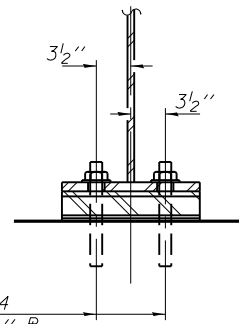


1/8" elastomeric neoprene leveling pad according to the material properties of Article 1052.02(a) of the Standard Specifications. Cost included with Furnishing & Erecting Structural Steel.

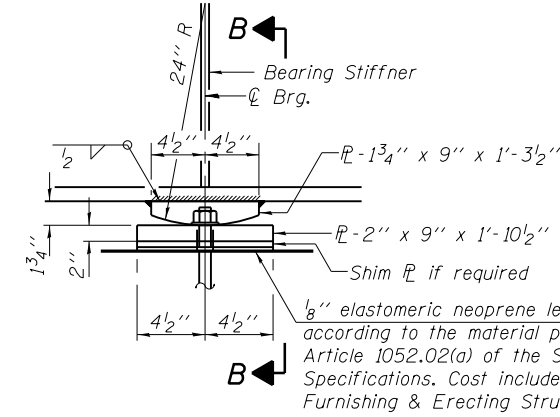
1" ϕ x 12" anchor bolts (F1554 Grade 55) with 2 1/4" x 2 1/4" x 5/16" PL washer under nut. 1 3/8" x 2" slotted hole in bottom flange. Provide 1/2" ϕ holes in bearing plate.

ELEVATION AT ABUTMENT

FIXED BEARING AT ABUTMENTS
(12 required)

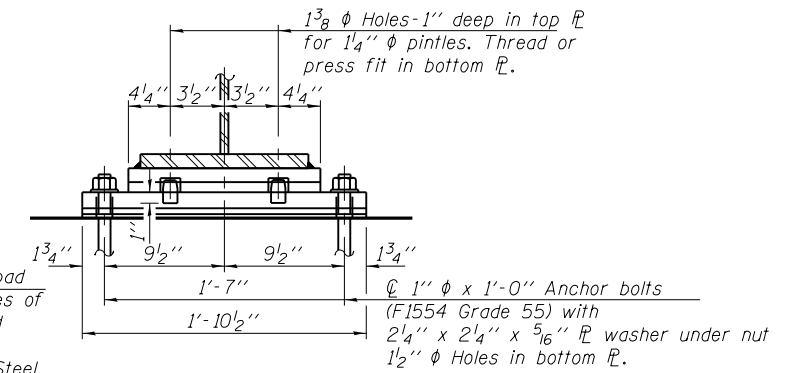


SECTION A-A

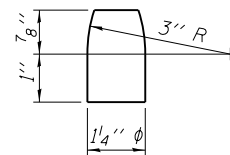


ELEVATION AT PIER

FIXED BEARING AT PIERS 1 & 3
(12 required)



SECTION B-B



PINTLE

Notes:

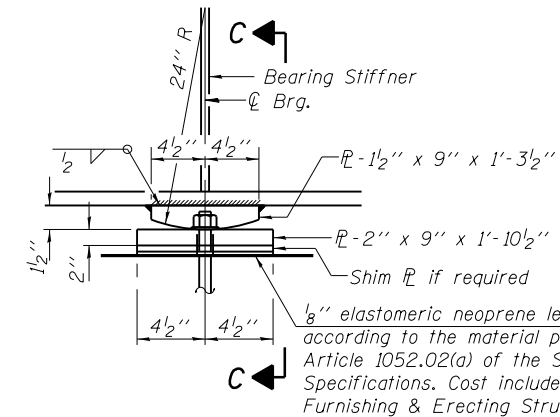
Two 1/8 in. adjusting shims shall be provided for each bearing in addition to all other plates or shims and placed as shown on bearing details.

Anchor bolts shall be ASTM F1554 all-thread (or an Engineer-approved alternate material) of the grade(s) and diameter(s) specified.

Anchor bolts at fixed bearings may be either cast in place or installed in holes drilled after the supported member is in place.

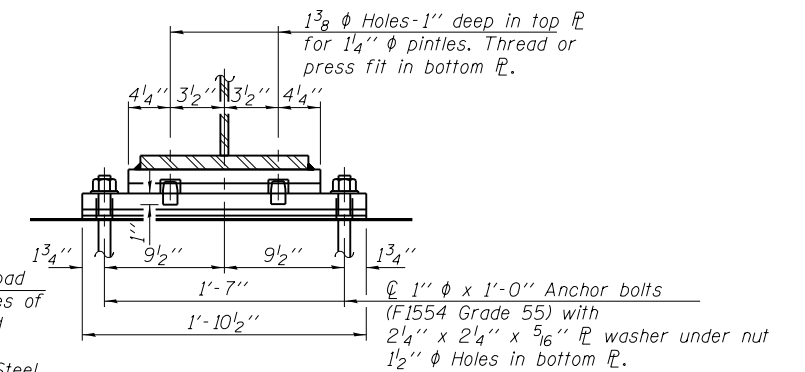
The structural steel plates of the fixed bearings, including pintles, shall conform to the requirements of AASHTO M270 Grade 50W.

The anchor bolt sizes and grades shown constitute a calculated seismic structural fuse. Substitution of higher diameter and/or grade anchor bolts will not be allowed.



ELEVATION AT PIER

FIXED BEARING AT PIER 2
(6 required)



SECTION C-C

BILL OF MATERIAL

Item	Unit	Total
Anchor Bolts, 1"	Each	60